

TOSHIBA Bipolar Linear Integrated Circuit Silicon Monolithic

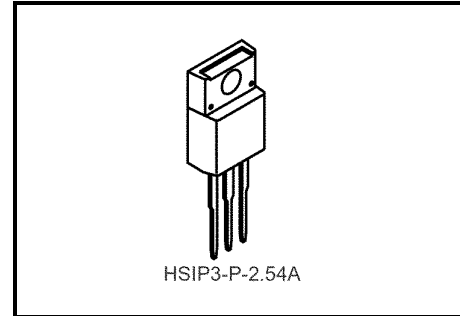
**TA79005S, TA79006S, TA79007S, TA79008S, TA79009S, TA79010S,
TA79012S, TA79015S, TA79018S, TA79020S, TA79024S**

Output Current of 1A, Three-Terminal Negative Voltage Regulators

-5 V, -6 V, -7 V, -8 V, -9 V, -10 V, -12 V, -15 V, -18 V, -20 V, -24 V

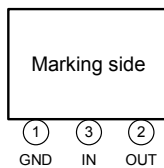
Features

- Suitable for CMOS, TTL, and the power supply of other digital ICs
- Internal thermal overload protection
- Internal short circuit current limiting
- Maximum output current of 1.0 A
- Metal fin (tab) fully covered with mold resin (TO-220 NIS package)

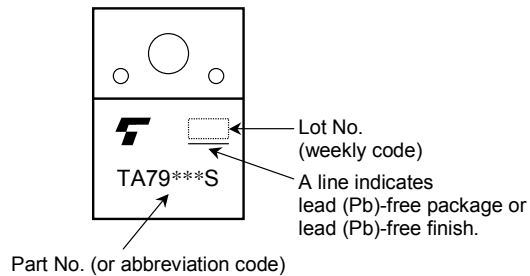


Weight: 1.7 g (typ.)

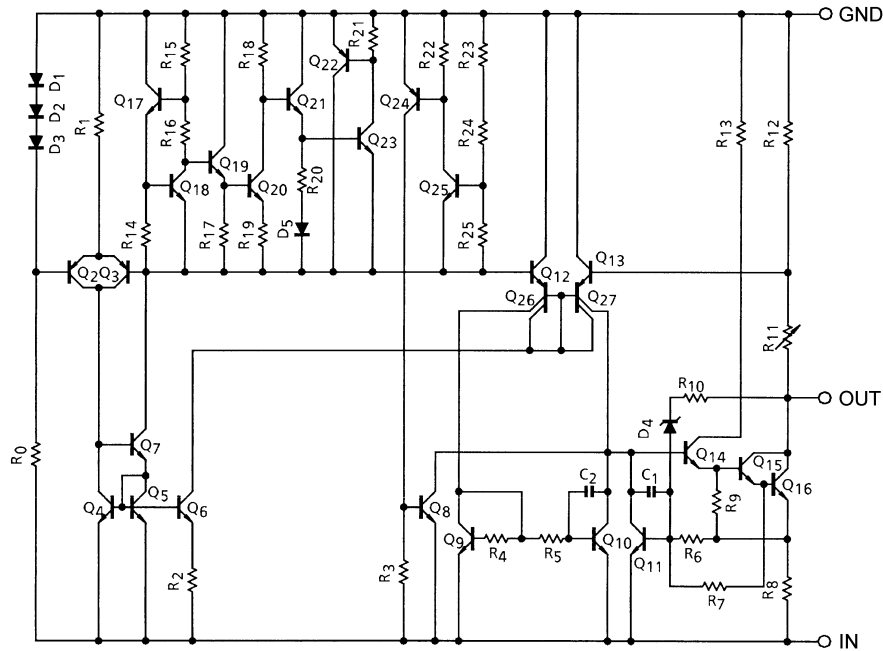
Pin Assignment



Marking



Equivalent Circuit



Maximum Ratings (Ta = 25°C)

Characteristics	Symbol	Rating	Unit			
Input voltage	V _{IN}	-35	V			
		-40				
		2		W		
		20				
		Operating temperature		T _{opr}	-30~85	°C
		Storage temperature		T _{stg}	-55~150	°C
		Junction temperature		T _j	150	°C
		Thermal resistance		R _{th(j-c)}	6.25	°C/W
				R _{th(j-a)}	62.5	

TA79005S

Electrical Characteristics

(Unless otherwise specified, $V_{IN} = -10\text{ V}$, $I_{OUT} = 500\text{ mA}$, $0^\circ\text{C} \leq T_j \leq 125^\circ\text{C}$, $C_{IN} = 0.33\text{ }\mu\text{F}$, $C_{OUT} = 0.1\text{ }\mu\text{F}$)

Characteristics	Symbol	Test Circuit	Test Condition	Min	Typ.	Max	Unit	
Output voltage	V_{OUT}	1	$T_j = 25^\circ\text{C}$	-5.2	-5.0	-4.8	V	
Line regulation	Reg-line	1	$T_j = 25^\circ\text{C}$	$-12\text{ V} \leq V_{IN} \leq -8\text{ V}$	—	7	50	mV
				$-25\text{ V} \leq V_{IN} \leq -7\text{ V}$	—	35	100	
Load regulation	Reg-load	1	$T_j = 25^\circ\text{C}$	$5\text{ mA} \leq I_{OUT} \leq 1.5\text{ A}$	—	11	100	mV
				$250\text{ mA} \leq I_{OUT} \leq 750\text{ mA}$	—	4	50	
Output voltage	V_{OUT}	1	$T_j = 25^\circ\text{C}$	-5.25	—	-4.75	V	
Quiescent current	I_B	1	$T_j = 25^\circ\text{C}$	—	4.3	8.0	mA	
Quiescent current change	Line	ΔI_B	$T_j = 25^\circ\text{C}$	$-25\text{ V} \leq V_{IN} \leq -7\text{ V}$	—	—	1.3	mA
	Load				$5\text{ mA} \leq I_{OUT} \leq 1.0\text{ A}$	—	—	
Output noise voltage	V_{NO}	2	$T_a = 25^\circ\text{C}$, $I_{OUT} = 20\text{ mA}$, $10\text{ Hz} \leq f \leq 100\text{ kHz}$	—		40	—	μV_{rms}
Ripple rejection	R.R.	3	$f = 120\text{ Hz}$, $I_{OUT} = 20\text{ mA}$, $T_j = 25^\circ\text{C}$	63	70	—	dB	
Short circuit current limit	I_{SC}	1	$T_j = 25^\circ\text{C}$	—	1.9	—	A	
Dropout voltage	V_D	1	$T_j = 25^\circ\text{C}$, $I_{OUT} = 1.0\text{ A}$	—	2.0	—	V	
Average temperature coefficient of output voltage	T_{CVO}	1	$I_{OUT} = 5.0\text{ mA}$	—	0.6	—	$\text{mV}/^\circ\text{C}$	

TA79006S

Electrical Characteristics

(Unless otherwise specified, $V_{IN} = -11\text{ V}$, $I_{OUT} = 500\text{ mA}$, $0^\circ\text{C} \leq T_j \leq 125^\circ\text{C}$, $C_{IN} = 0.33\ \mu\text{F}$, $C_{OUT} = 0.1\ \mu\text{F}$)

Characteristics	Symbol	Test Circuit	Test Condition	Min	Typ.	Max	Unit	
Output voltage	V_{OUT}	1	$T_j = 25^\circ\text{C}$	-6.25	-6.0	-5.75	V	
Line regulation	Reg-line	1	$T_j = 25^\circ\text{C}$	$-13\text{ V} \leq V_{IN} \leq -9\text{ V}$	—	9	60	mV
				$-25\text{ V} \leq V_{IN} \leq -8\text{ V}$	—	43	120	
Load regulation	Reg-load	1	$T_j = 25^\circ\text{C}$	$5\text{ mA} \leq I_{OUT} \leq 1.5\text{ A}$	—	13	120	mV
				$250\text{ mA} \leq I_{OUT} \leq 750\text{ mA}$	—	5	60	
Output voltage	V_{OUT}	1	$T_j = 25^\circ\text{C}$	-6.3	—	-5.7	V	
Quiescent current	I_B	1	$T_j = 25^\circ\text{C}$	—	4.3	8.0	mA	
Quiescent current change	Line	ΔI_B	$T_j = 25^\circ\text{C}$	$-25\text{ V} \leq V_{IN} \leq -8\text{ V}$	—	—	1.3	mA
	Load				$5\text{ mA} \leq I_{OUT} \leq 1.0\text{ A}$	—	—	
Output noise voltage	V_{NO}	2	$T_a = 25^\circ\text{C}$, $I_{OUT} = 20\text{ mA}$, $10\text{ Hz} \leq f \leq 100\text{ kHz}$	—		45	—	μV_{rms}
Ripple rejection	R.R.	3	$f = 120\text{ Hz}$, $I_{OUT} = 20\text{ mA}$, $T_j = 25^\circ\text{C}$	61	68	—	dB	
Short circuit current limit	I_{SC}	1	$T_j = 25^\circ\text{C}$	—	1.9	—	A	
Dropout voltage	V_D	1	$T_j = 25^\circ\text{C}$, $I_{OUT} = 1.0\text{ A}$	—	2.0	—	V	
Average temperature coefficient of output voltage	T_{CVO}	1	$I_{OUT} = 5.0\text{ mA}$	—	0.7	—	$\text{mV}/^\circ\text{C}$	

TA79007S

Electrical Characteristics

(Unless otherwise specified, $V_{IN} = -12\text{ V}$, $I_{OUT} = 500\text{ mA}$, $0^\circ\text{C} \leq T_j \leq 125^\circ\text{C}$, $C_{IN} = 0.33\ \mu\text{F}$, $C_{OUT} = 0.1\ \mu\text{F}$)

Characteristics	Symbol	Test Circuit	Test Condition	Min	Typ.	Max	Unit	
Output voltage	V_{OUT}	1	$T_j = 25^\circ\text{C}$	-7.28	-7.0	-6.72	V	
Line regulation	Reg-line	1	$T_j = 25^\circ\text{C}$	$-15\text{ V} \leq V_{IN} \leq -10\text{ V}$	—	10	70	mV
				$-25\text{ V} \leq V_{IN} \leq -9\text{ V}$	—	45	140	
Load regulation	Reg-load	1	$T_j = 25^\circ\text{C}$	$5\text{ mA} \leq I_{OUT} \leq 1.5\text{ A}$	—	20	140	mV
				$250\text{ mA} \leq I_{OUT} \leq 750\text{ mA}$	—	7	70	
Output voltage	V_{OUT}	1	$T_j = 25^\circ\text{C}$	-7.35	—	-6.65	V	
Quiescent current	I_B	1	$T_j = 25^\circ\text{C}$	—	4.3	8.0	mA	
Quiescent current change	Line	ΔI_B	$T_j = 25^\circ\text{C}$	$-25\text{ V} \leq V_{IN} \leq -9\text{ V}$	—	—	1.0	mA
	Load			$5\text{ mA} \leq I_{OUT} \leq 1.0\text{ A}$	—	—	0.5	
Output noise voltage	V_{NO}	2	$T_a = 25^\circ\text{C}$, $I_{OUT} = 20\text{ mA}$, $10\text{ Hz} \leq f \leq 100\text{ kHz}$	—	49	—	μV_{rms}	
Ripple rejection	R.R.	3	$f = 120\text{ Hz}$, $I_{OUT} = 20\text{ mA}$, $T_j = 25^\circ\text{C}$	60	67	—	dB	
Short circuit current limit	I_{SC}	1	$T_j = 25^\circ\text{C}$	—	1.9	—	A	
Dropout voltage	V_D	1	$T_j = 25^\circ\text{C}$, $I_{OUT} = 1.0\text{ A}$	—	2.0	—	V	
Average temperature coefficient of output voltage	T_{CVO}	1	$I_{OUT} = 5.0\text{ mA}$	—	0.9	—	$\text{mV}/^\circ\text{C}$	

TA79008S

Electrical Characteristics

(Unless otherwise specified, $V_{IN} = -14\text{ V}$, $I_{OUT} = 500\text{ mA}$, $0^\circ\text{C} \leq T_j \leq 125^\circ\text{C}$, $C_{IN} = 0.33\ \mu\text{F}$, $C_{OUT} = 0.1\ \mu\text{F}$)

Characteristics	Symbol	Test Circuit	Test Condition	Min	Typ.	Max	Unit	
Output voltage	V_{OUT}	1	$T_j = 25^\circ\text{C}$	-8.3	-8.0	-7.7	V	
Line regulation	Reg-line	1	$T_j = 25^\circ\text{C}$	$-17\text{ V} \leq V_{IN} \leq -11\text{ V}$	—	11	80	mV
				$-25\text{ V} \leq V_{IN} \leq -10.5\text{ V}$	—	47	160	
Load regulation	Reg-load	1	$T_j = 25^\circ\text{C}$	$5\text{ mA} \leq I_{OUT} \leq 1.5\text{ A}$	—	26	160	mV
				$250\text{ mA} \leq I_{OUT} \leq 750\text{ mA}$	—	9	80	
Output voltage	V_{OUT}	1	$T_j = 25^\circ\text{C}$	-8.4	—	-7.6	V	
Quiescent current	I_B	1	$T_j = 25^\circ\text{C}$	—	4.3	8.0	mA	
Quiescent current change	Line	ΔI_B	$T_j = 25^\circ\text{C}$	$-25\text{ V} \leq V_{IN} \leq -10.5\text{ V}$	—	—	1.0	mA
	Load			$5\text{ mA} \leq I_{OUT} \leq 1.0\text{ A}$	—	—	0.5	
Output noise voltage	V_{NO}	2	$T_a = 25^\circ\text{C}$, $I_{OUT} = 20\text{ mA}$, $10\text{ Hz} \leq f \leq 100\text{ kHz}$	—	52	—	μV_{rms}	
Ripple rejection	R.R.	3	$f = 120\text{ Hz}$, $I_{OUT} = 20\text{ mA}$, $T_j = 25^\circ\text{C}$	59	66	—	dB	
Short circuit current limit	I_{SC}	1	$T_j = 25^\circ\text{C}$	—	1.9	—	A	
Dropout voltage	V_D	1	$T_j = 25^\circ\text{C}$, $I_{OUT} = 1.0\text{ A}$	—	2.0	—	V	
Average temperature coefficient of output voltage	T_{CVO}	1	$I_{OUT} = 5.0\text{ mA}$	—	1.0	—	$\text{mV}/^\circ\text{C}$	

TA79009S

Electrical Characteristics

(Unless otherwise specified, $V_{IN} = -15\text{ V}$, $I_{OUT} = 500\text{ mA}$, $0^\circ\text{C} \leq T_j \leq 125^\circ\text{C}$, $C_{IN} = 0.33\ \mu\text{F}$, $C_{OUT} = 0.1\ \mu\text{F}$)

Characteristics	Symbol	Test Circuit	Test Condition	Min	Typ.	Max	Unit	
Output voltage	V_{OUT}	1	$T_j = 25^\circ\text{C}$	-9.3	-9.0	-8.7	V	
Line regulation	Reg-line	1	$T_j = 25^\circ\text{C}$	$-19\text{ V} \leq V_{IN} \leq -13\text{ V}$	—	11	82	mV
				$-26\text{ V} \leq V_{IN} \leq -11.5\text{ V}$	—	48	162	
Load regulation	Reg-load	1	$T_j = 25^\circ\text{C}$	$5\text{ mA} \leq I_{OUT} \leq 1.5\text{ A}$	—	33	162	mV
				$250\text{ mA} \leq I_{OUT} \leq 750\text{ mA}$	—	11	82	
Output voltage	V_{OUT}	1	$T_j = 25^\circ\text{C}$	-9.4	—	-8.6	V	
Quiescent current	I_B	1	$T_j = 25^\circ\text{C}$	—	4.3	8.0	mA	
Quiescent current change	Line	ΔI_B	$T_j = 25^\circ\text{C}$	$-26.5\text{ V} \leq V_{IN} \leq -13\text{ V}$	—	—	1.0	mA
	Load			$5\text{ mA} \leq I_{OUT} \leq 1.0\text{ A}$	—	—	0.5	
Output noise voltage	V_{NO}	2	$T_a = 25^\circ\text{C}$, $I_{OUT} = 20\text{ mA}$, $10\text{ Hz} \leq f \leq 100\text{ kHz}$	—	60	—	μV_{rms}	
Ripple rejection	R.R.	3	$f = 120\text{ Hz}$, $I_{OUT} = 20\text{ mA}$, $T_j = 25^\circ\text{C}$	57	64	—	dB	
Short circuit current limit	I_{SC}	1	$T_j = 25^\circ\text{C}$	—	1.9	—	A	
Dropout voltage	V_D	1	$T_j = 25^\circ\text{C}$, $I_{OUT} = 1.0\text{ A}$	—	2.0	—	V	
Average temperature coefficient of output voltage	T_{CVO}	1	$I_{OUT} = 5.0\text{ mA}$	—	1.1	—	$\text{mV}/^\circ\text{C}$	

TA79010S

Electrical Characteristics

(Unless otherwise specified, $V_{IN} = -16\text{ V}$, $I_{OUT} = 500\text{ mA}$, $0^\circ\text{C} \leq T_j \leq 125^\circ\text{C}$, $C_{IN} = 0.33\text{ }\mu\text{F}$, $C_{OUT} = 0.1\text{ }\mu\text{F}$)

Characteristics	Symbol	Test Circuit	Test Condition	Min	Typ.	Max	Unit	
Output voltage	V_{OUT}	1	$T_j = 25^\circ\text{C}$	-10.4	-10.0	-9.6	V	
Line regulation	Reg-line	1	$T_j = 25^\circ\text{C}$	$-20\text{ V} \leq V_{IN} \leq -14\text{ V}$	—	12	90	mV
				$-27\text{ V} \leq V_{IN} \leq -12.5\text{ V}$	—	50	180	
Load regulation	Reg-load	1	$T_j = 25^\circ\text{C}$	$5\text{ mA} \leq I_{OUT} \leq 1.5\text{ A}$	—	40	180	mV
				$250\text{ mA} \leq I_{OUT} \leq 750\text{ mA}$	—	13	90	
Output voltage	V_{OUT}	1	$T_j = 25^\circ\text{C}$	-10.5	—	-9.5	V	
Quiescent current	I_B	1	$T_j = 25^\circ\text{C}$	—	4.4	8.0	mA	
Quiescent current change	Line	1	$T_j = 25^\circ\text{C}$	$-27.5\text{ V} \leq V_{IN} \leq -14\text{ V}$	—	—	1.0	mA
	Load	1			$5\text{ mA} \leq I_{OUT} \leq 1.0\text{ A}$	—	—	
Output noise voltage	V_{NO}	2	$T_a = 25^\circ\text{C}$, $I_{OUT} = 20\text{ mA}$, $10\text{ Hz} \leq f \leq 100\text{ kHz}$	—	65	—	μV_{rms}	
Ripple rejection	R.R.	3	$f = 120\text{ Hz}$, $I_{OUT} = 20\text{ mA}$, $T_j = 25^\circ\text{C}$	57	63	—	dB	
Short circuit current limit	I_{SC}	1	$T_j = 25^\circ\text{C}$	—	1.9	—	A	
Dropout voltage	V_D	1	$T_j = 25^\circ\text{C}$, $I_{OUT} = 1.0\text{ A}$	—	2.0	—	V	
Average temperature coefficient of output voltage	T_{CVO}	1	$I_{OUT} = 5.0\text{ mA}$	—	1.3	—	$\text{mV}/^\circ\text{C}$	

TA79012S

Electrical Characteristics

(Unless otherwise specified, $V_{IN} = -19\text{ V}$, $I_{OUT} = 500\text{ mA}$, $0^\circ\text{C} \leq T_j \leq 125^\circ\text{C}$, $C_{IN} = 0.33\text{ }\mu\text{F}$, $C_{OUT} = 0.1\text{ }\mu\text{F}$)

Characteristics	Symbol	Test Circuit	Test Condition	Min	Typ.	Max	Unit	
Output voltage	V_{OUT}	1	$T_j = 25^\circ\text{C}$	-12.5	-12.0	-11.5	V	
Line regulation	Reg-line	1	$T_j = 25^\circ\text{C}$	$-22\text{ V} \leq V_{IN} \leq -16\text{ V}$	—	13	120	mV
				$-30\text{ V} \leq V_{IN} \leq -14.5\text{ V}$	—	55	240	
Load regulation	Reg-load	1	$T_j = 25^\circ\text{C}$	$5\text{ mA} \leq I_{OUT} \leq 1.5\text{ A}$	—	46	240	mV
				$250\text{ mA} \leq I_{OUT} \leq 750\text{ mA}$	—	17	120	
Output voltage	V_{OUT}	1	$T_j = 25^\circ\text{C}$	-12.6	—	-11.4	V	
Quiescent current	I_B	1	$T_j = 25^\circ\text{C}$	—	4.4	8.0	mA	
Quiescent current change	Line	1	$T_j = 25^\circ\text{C}$	$-30\text{ V} \leq V_{IN} \leq -14.5\text{ V}$	—	—	1.0	mA
	Load	1			$5\text{ mA} \leq I_{OUT} \leq 1.0\text{ A}$	—	—	
Output noise voltage	V_{NO}	2	$T_a = 25^\circ\text{C}$, $I_{OUT} = 20\text{ mA}$, $10\text{ Hz} \leq f \leq 100\text{ kHz}$	—	75	—	μV_{rms}	
Ripple rejection	R.R.	3	$f = 120\text{ Hz}$, $I_{OUT} = 20\text{ mA}$, $T_j = 25^\circ\text{C}$	54	61	—	dB	
Short circuit current limit	I_{SC}	1	$T_j = 25^\circ\text{C}$	—	1.9	—	A	
Dropout voltage	V_D	1	$T_j = 25^\circ\text{C}$, $I_{OUT} = 1.0\text{ A}$	—	2.0	—	V	
Average temperature coefficient of output voltage	T_{CVO}	1	$I_{OUT} = 5.0\text{ mA}$	—	1.6	—	$\text{mV}/^\circ\text{C}$	

TA79015S

Electrical Characteristics

(Unless otherwise specified, $V_{IN} = -23\text{ V}$, $I_{OUT} = 500\text{ mA}$, $0^\circ\text{C} \leq T_j \leq 125^\circ\text{C}$, $C_{IN} = 0.33\ \mu\text{F}$, $C_{OUT} = 0.1\ \mu\text{F}$)

Characteristics	Symbol	Test Circuit	Test Condition	Min	Typ.	Max	Unit	
Output voltage	V_{OUT}	1	$T_j = 25^\circ\text{C}$	-15.6	-15.0	-14.4	V	
Line regulation	Reg-line	1	$T_j = 25^\circ\text{C}$	$-26\text{ V} \leq V_{IN} \leq -20\text{ V}$	—	14	150	mV
				$-30\text{ V} \leq V_{IN} \leq -17.5\text{ V}$	—	57	300	
Load regulation	Reg-load	1	$T_j = 25^\circ\text{C}$	$5\text{ mA} \leq I_{OUT} \leq 1.5\text{ A}$	—	68	300	mV
				$250\text{ mA} \leq I_{OUT} \leq 750\text{ mA}$	—	25	150	
Output voltage	V_{OUT}	1	$T_j = 25^\circ\text{C}$	-15.75	—	-14.25	V	
Quiescent current	I_B	1	$T_j = 25^\circ\text{C}$	—	4.4	8.0	mA	
Quiescent current change	Line	1	$T_j = 25^\circ\text{C}$	$-30\text{ V} \leq V_{IN} \leq -17.5\text{ V}$	—	—	1.0	mA
	Load	1			$5\text{ mA} \leq I_{OUT} \leq 1.0\text{ A}$	—	—	
Output noise voltage	V_{NO}	2	$T_a = 25^\circ\text{C}$, $I_{OUT} = 20\text{ mA}$, $10\text{ Hz} \leq f \leq 100\text{ kHz}$	—	90	—	μV_{rms}	
Ripple rejection	R.R.	3	$f = 120\text{ Hz}$, $I_{OUT} = 20\text{ mA}$, $T_j = 25^\circ\text{C}$	53	60	—	dB	
Short circuit current limit	I_{SC}	1	$T_j = 25^\circ\text{C}$	—	1.9	—	A	
Dropout voltage	V_D	1	$T_j = 25^\circ\text{C}$, $I_{OUT} = 1.0\text{ A}$	—	2.0	—	V	
Average temperature coefficient of output voltage	T_{CVO}	1	$I_{OUT} = 5.0\text{ mA}$	—	2.0	—	$\text{mV}/^\circ\text{C}$	

TA79018S

Electrical Characteristics

(Unless otherwise specified, $V_{IN} = -27\text{ V}$, $I_{OUT} = 500\text{ mA}$, $0^\circ\text{C} \leq T_j \leq 125^\circ\text{C}$, $C_{IN} = 0.33\ \mu\text{F}$, $C_{OUT} = 0.1\ \mu\text{F}$)

Characteristics	Symbol	Test Circuit	Test Condition	Min	Typ.	Max	Unit	
Output voltage	V_{OUT}	1	$T_j = 25^\circ\text{C}$	-18.7	-18.0	-17.3	V	
Line regulation	Reg-line	1	$T_j = 25^\circ\text{C}$	$-30\text{ V} \leq V_{IN} \leq -24\text{ V}$	—	25	180	mV
				$-33\text{ V} \leq V_{IN} \leq -21\text{ V}$	—	80	360	
Load regulation	Reg-load	1	$T_j = 25^\circ\text{C}$	$5\text{ mA} \leq I_{OUT} \leq 1.5\text{ A}$	—	110	360	mV
				$250\text{ mA} \leq I_{OUT} \leq 750\text{ mA}$	—	55	180	
Output voltage	V_{OUT}	1	$T_j = 25^\circ\text{C}$	-18.85	—	-17.15	V	
Quiescent current	I_B	1	$T_j = 25^\circ\text{C}$	—	4.5	8.0	mA	
Quiescent current change	Line	ΔI_B	$T_j = 25^\circ\text{C}$	$-33\text{ V} \leq V_{IN} \leq -21\text{ V}$	—	—	1.0	mA
	Load			$5\text{ mA} \leq I_{OUT} \leq 1.0\text{ A}$	—	—	0.5	
Output noise voltage	V_{NO}	2	$T_a = 25^\circ\text{C}$, $I_{OUT} = 20\text{ mA}$, $10\text{ Hz} \leq f \leq 100\text{ kHz}$	—	110	—	μV_{rms}	
Ripple rejection	R.R.	3	$f = 120\text{ Hz}$, $I_{OUT} = 20\text{ mA}$, $T_j = 25^\circ\text{C}$	52	59	—	dB	
Short circuit current limit	I_{SC}	1	$T_j = 25^\circ\text{C}$	—	1.9	—	A	
Dropout voltage	V_D	1	$T_j = 25^\circ\text{C}$, $I_{OUT} = 1.0\text{ A}$	—	2.0	—	V	
Average temperature coefficient of output voltage	T_{CVO}	1	$I_{OUT} = 5.0\text{ mA}$	—	2.5	—	$\text{mV}/^\circ\text{C}$	

TA79020S

Electrical Characteristics

(Unless otherwise specified, $V_{IN} = -30\text{ V}$, $I_{OUT} = 500\text{ mA}$, $0^\circ\text{C} \leq T_j \leq 125^\circ\text{C}$, $C_{IN} = 0.33\ \mu\text{F}$, $C_{OUT} = 0.1\ \mu\text{F}$)

Characteristics	Symbol	Test Circuit	Test Condition	Min	Typ.	Max	Unit	
Output voltage	V_{OUT}	1	$T_j = 25^\circ\text{C}$	-20.8	-20.0	-19.2	V	
Line regulation	Reg-line	1	$T_j = 25^\circ\text{C}$	$-32\text{ V} \leq V_{IN} \leq -26\text{ V}$	—	28	180	mV
				$-35\text{ V} \leq V_{IN} \leq -24\text{ V}$	—	104	360	
Load regulation	Reg-load	1	$T_j = 25^\circ\text{C}$	$5\text{ mA} \leq I_{OUT} \leq 1.5\text{ A}$	—	130	360	mV
				$250\text{ mA} \leq I_{OUT} \leq 750\text{ mA}$	—	70	180	
Output voltage	V_{OUT}	1	$T_j = 25^\circ\text{C}$ $-35\text{ V} \leq V_{IN} \leq -24\text{ V}$, $5\text{ mA} \leq I_{OUT} \leq 1.0\text{ A}$	-21.0	—	-19.0	V	
Quiescent current	I_B	1	$T_j = 25^\circ\text{C}$	—	4.6	8.0	mA	
Quiescent current change	Line	1	$T_j = 25^\circ\text{C}$	$-36.5\text{ V} \leq V_{IN} \leq -25\text{ V}$	—	—	1.0	mA
	Load	1			$5\text{ mA} \leq I_{OUT} \leq 1.0\text{ A}$	—	—	
Output noise voltage	V_{NO}	2	$T_a = 25^\circ\text{C}$, $I_{OUT} = 20\text{ mA}$, $10\text{ Hz} \leq f \leq 100\text{ kHz}$	—	140	—	μV_{rms}	
Ripple rejection	R.R.	3	$f = 120\text{ Hz}$, $I_{OUT} = 20\text{ mA}$, $T_j = 25^\circ\text{C}$	50	57	—	dB	
Short circuit current limit	I_{SC}	1	$T_j = 25^\circ\text{C}$	—	1.9	—	A	
Dropout voltage	V_D	1	$T_j = 25^\circ\text{C}$, $I_{OUT} = 1.0\text{ A}$	—	2.0	—	V	
Average temperature coefficient of output voltage	T_{CVO}	1	$I_{OUT} = 5.0\text{ mA}$	—	3.0	—	$\text{mV}/^\circ\text{C}$	

TA79024S

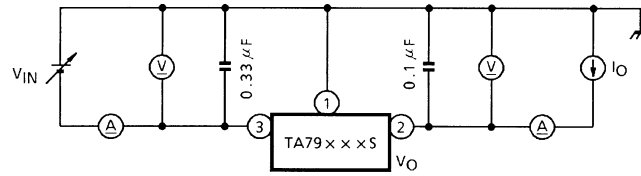
Electrical Characteristics

(Unless otherwise specified, $V_{IN} = -33\text{ V}$, $I_{OUT} = 500\text{ mA}$, $0^\circ\text{C} \leq T_j \leq 125^\circ\text{C}$, $C_{IN} = 0.33\ \mu\text{F}$, $C_{OUT} = 0.1\ \mu\text{F}$)

Characteristics	Symbol	Test Circuit	Test Condition	Min	Typ.	Max	Unit	
Output voltage	V_{OUT}	1	$T_j = 25^\circ\text{C}$	-25.0	-24.0	-23.0	V	
Line regulation	Reg-line	1	$T_j = 25^\circ\text{C}$	$-36\text{ V} \leq V_{IN} \leq -30\text{ V}$	—	31	240	mV
				$-38\text{ V} \leq V_{IN} \leq -27\text{ V}$	—	118	480	
Load regulation	Reg-load	1	$T_j = 25^\circ\text{C}$	$5\text{ mA} \leq I_{OUT} \leq 1.5\text{ A}$	—	150	480	mV
				$250\text{ mA} \leq I_{OUT} \leq 750\text{ mA}$	—	85	240	
Output voltage	V_{OUT}	1	$T_j = 25^\circ\text{C}$ $-38\text{ V} \leq V_{IN} \leq -27\text{ V}$, $5\text{ mA} \leq I_{OUT} \leq 1.0\text{ A}$	-25.2	—	-22.8	V	
Quiescent current	I_B	1	$T_j = 25^\circ\text{C}$	—	4.6	8.0	mA	
Quiescent current change	Line	1	$T_j = 25^\circ\text{C}$	$-38\text{ V} \leq V_{IN} \leq -27\text{ V}$	—	—	1.0	mA
	Load	1			$5\text{ mA} \leq I_{OUT} \leq 1.0\text{ A}$	—	—	
Output noise voltage	V_{NO}	2	$T_a = 25^\circ\text{C}$, $I_{OUT} = 20\text{ mA}$, $10\text{ Hz} \leq f \leq 100\text{ kHz}$	—	170	—	μV_{rms}	
Ripple rejection	R.R.	3	$f = 120\text{ Hz}$, $I_{OUT} = 20\text{ mA}$, $T_j = 25^\circ\text{C}$	49	56	—	dB	
Short circuit current limit	I_{SC}	1	$T_j = 25^\circ\text{C}$	—	1.9	—	A	
Dropout voltage	V_D	1	$T_j = 25^\circ\text{C}$, $I_{OUT} = 1.0\text{ A}$	—	2.0	—	V	
Average temperature coefficient of output voltage	T_{CVO}	1	$I_{OUT} = 5.0\text{ mA}$	—	3.5	—	$\text{mV}/^\circ\text{C}$	

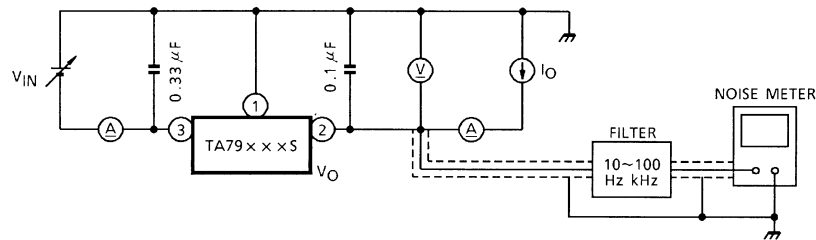
Test Circuit 1

V_{OUT} , Reg-line, Reg-load, I_B , ΔI_B , V_D , T_{cvo}



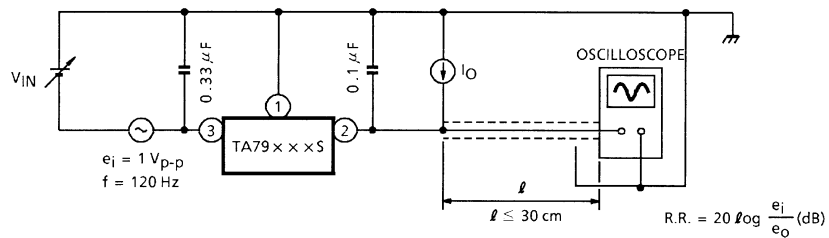
Test Circuit 2

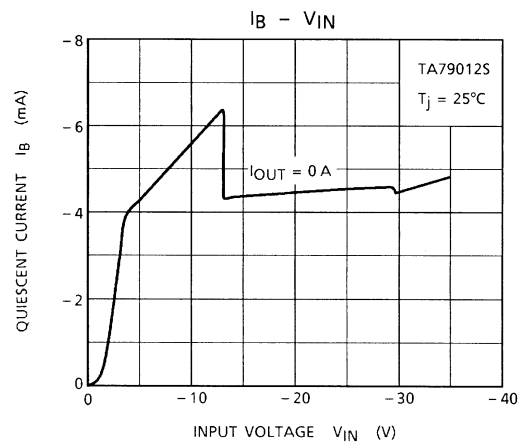
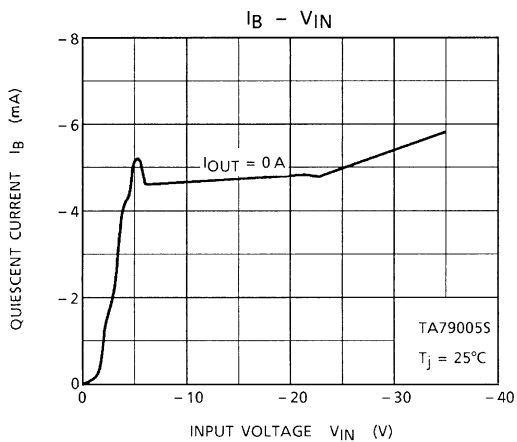
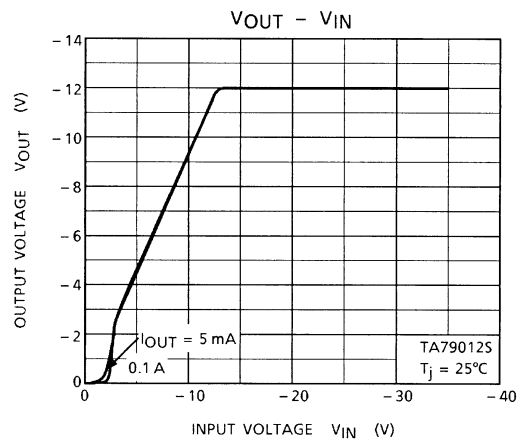
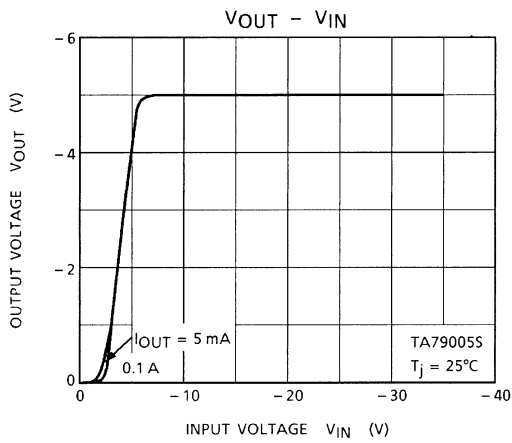
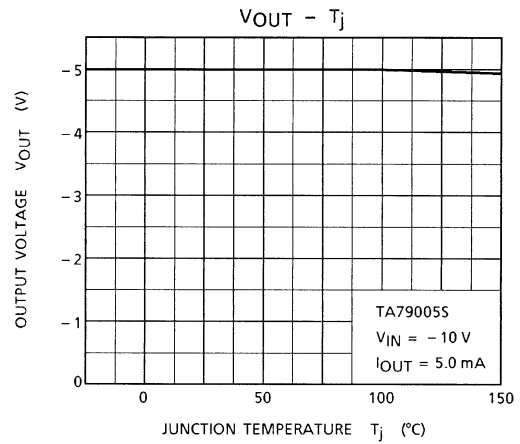
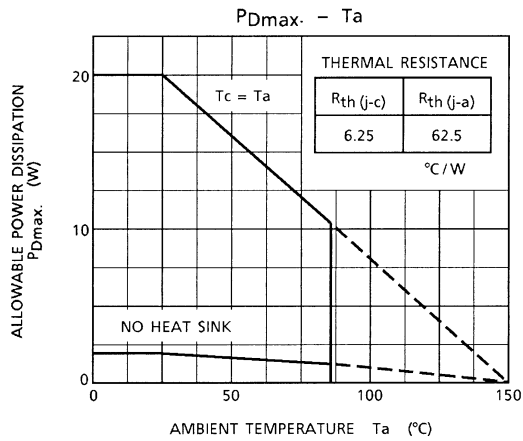
V_{NO}

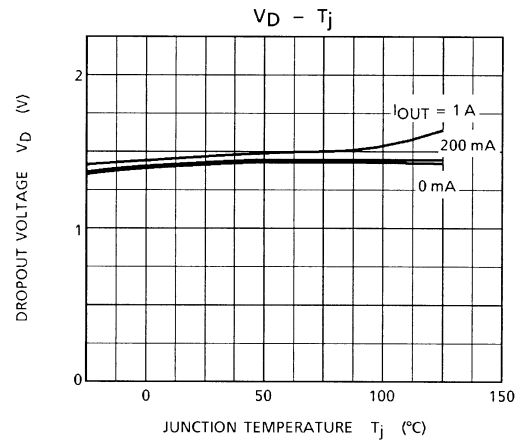
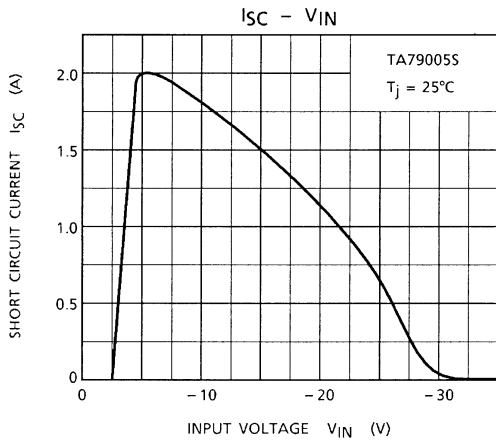
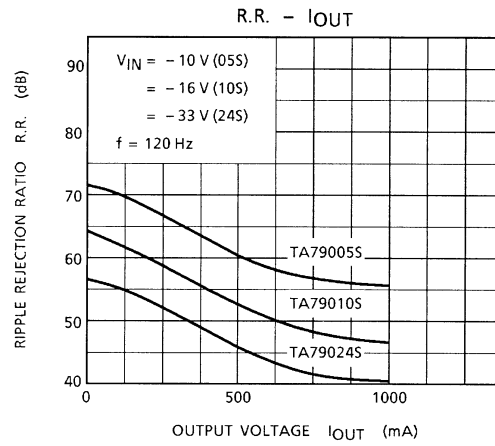
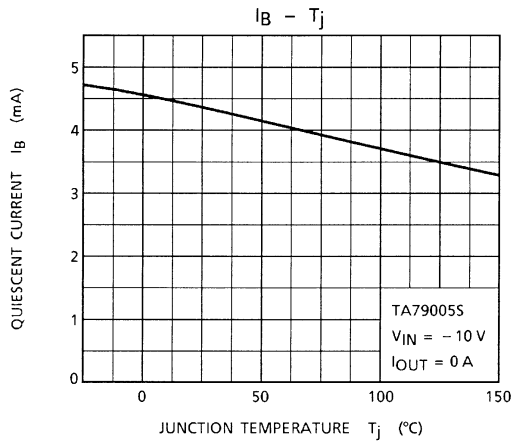


Test Circuit 3

R.R.



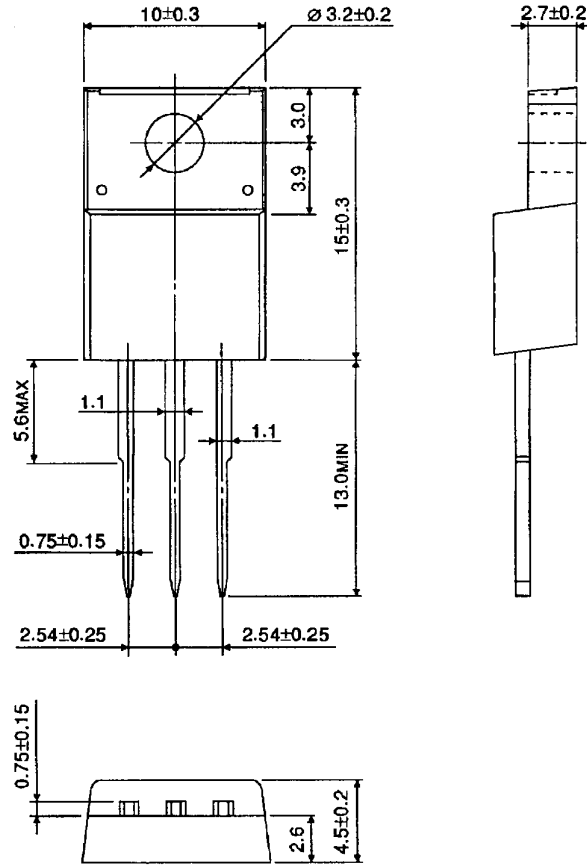




Package Dimensions

HSIP3-P-2.54A

Unit: mm



Weight: 1.7 g (typ.)

RESTRICTIONS ON PRODUCT USE

030619EBA

- The information contained herein is subject to change without notice.
- The information contained herein is presented only as a guide for the applications of our products. No responsibility is assumed by TOSHIBA for any infringements of patents or other rights of the third parties which may result from its use. No license is granted by implication or otherwise under any patent or patent rights of TOSHIBA or others.
- TOSHIBA is continually working to improve the quality and reliability of its products. Nevertheless, semiconductor devices in general can malfunction or fail due to their inherent electrical sensitivity and vulnerability to physical stress. It is the responsibility of the buyer, when utilizing TOSHIBA products, to comply with the standards of safety in making a safe design for the entire system, and to avoid situations in which a malfunction or failure of such TOSHIBA products could cause loss of human life, bodily injury or damage to property.
In developing your designs, please ensure that TOSHIBA products are used within specified operating ranges as set forth in the most recent TOSHIBA products specifications. Also, please keep in mind the precautions and conditions set forth in the "Handling Guide for Semiconductor Devices," or "TOSHIBA Semiconductor Reliability Handbook" etc..
- The TOSHIBA products listed in this document are intended for usage in general electronics applications (computer, personal equipment, office equipment, measuring equipment, industrial robotics, domestic appliances, etc.). These TOSHIBA products are neither intended nor warranted for usage in equipment that requires extraordinarily high quality and/or reliability or a malfunction or failure of which may cause loss of human life or bodily injury ("Unintended Usage"). Unintended Usage include atomic energy control instruments, airplane or spaceship instruments, transportation instruments, traffic signal instruments, combustion control instruments, medical instruments, all types of safety devices, etc.. Unintended Usage of TOSHIBA products listed in this document shall be made at the customer's own risk.
- The products described in this document are subject to the foreign exchange and foreign trade laws.
- TOSHIBA products should not be embedded to the downstream products which are prohibited to be produced and sold, under any law and regulations.