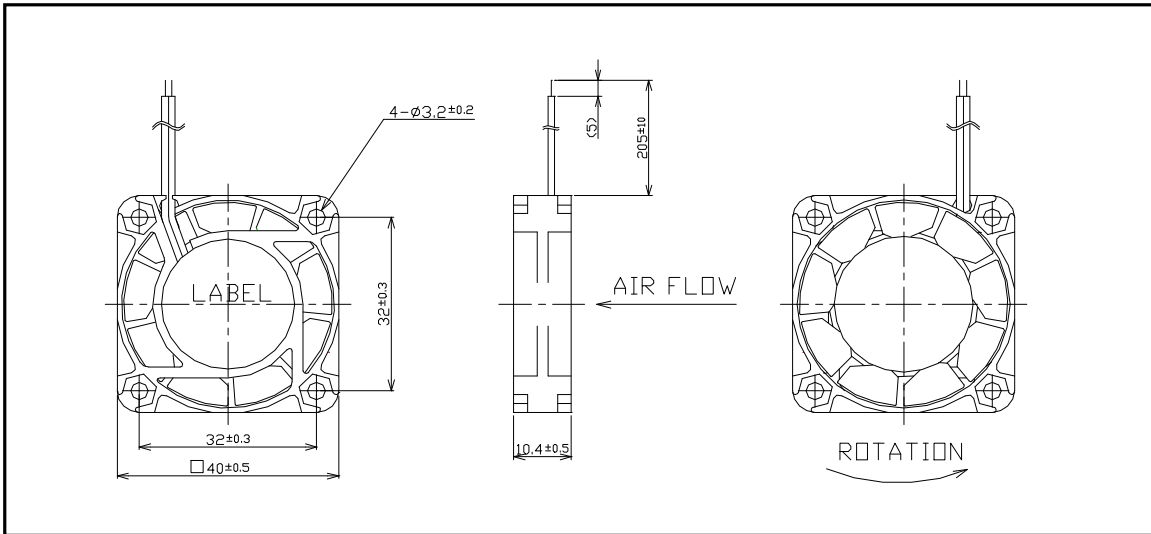


F4010AN TYPE

1ボール1スリーブ
(40x40x10.4mm)

Dimensions: Not to scale



Specifications

機種名 (Model)	F4010AN-05QCW	F4010AN-12PCV	F4010AN-12QCW	F4010AN-12SCV
定格電圧 (DCV) Rated voltage	5	12	12	12
使用電圧範囲 (DCV) Operating voltage range	4.5 ~ 5.5	10.2 ~ 13.8	10.2 ~ 13.8	10.2 ~ 13.8
定格電流 (A) Rated current	0.19	0.08	0.09	0.11
定格入力 (W) Rated input	0.95	0.96	1.08	1.32
最大風量 (m3/min) Max Air Volume	0.12	0.09	0.12	0.13
最大静圧 (Pa) Max Static Pressure	29.4	22.5	31.4	39.2
A特性音圧レベル (dB) Noise Lv at 1m (A-weighted)	25	23	27	35
回転速度 (min ⁻¹) Rotation frequency	4,800	4,400	5,100	6,500
期待寿命 (h) Life expectancy	50,000 Room temp-humidity			

使用温度範囲(Operating temp. range) :	-5 ~ +60 (5V), -10 ~ +60 (12V)
保存温度範囲(Storage temp. range) :	-40 ~ +70
リード線(Lead Wire) :	UL2468 AWG26: {5V: Red(+), Green(-)}, {12V: Red(+), Black(-)}
重量(Weight):	21g
絶縁抵抗(Insulation resist.) :	Min 10M Ω at DC500V (Between frame and leadwire)
耐電圧(Voltage withstand):	5mA (AC500V 1minute or AC600V 1 second, between frame and leadwir

In room temperature and humidity In room humidity Room temp.=20±15°C, Room humidity=65±20% 0203
Specifications subject to change without notice. Copyright ©2002 Shicoh Engineering Co., Ltd.

<http://www.shicoh.com>

