

# 4-3 超高速整流ダイオード

## 面実装

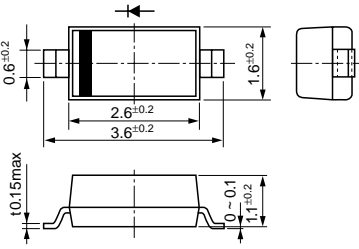
V <sub>RM</sub> (V)	I <sub>F</sub> (AV) (A) ( )フィン付	パッケージ	品名	I <sub>FSM</sub> (A)	T <sub>J</sub> ( )	T <sub>stg</sub> ( )	V <sub>F</sub> (V) max	I <sub>F</sub>	I <sub>R</sub>	I <sub>F</sub> (H)	T <sub>a</sub> ( )	trr <sup>①</sup> (ns)	trr <sup>②</sup> (ns)	R <sub>th(j-l)</sub> ( /W)	質量 (g)	
				50Hz 正弦半波単発				(A)	(μA) V <sub>R</sub> =V <sub>RM</sub> max	(mA) V <sub>R</sub> =V <sub>RM</sub> max						
200	0.9	面実装(SFP)	SFPL-52	25	40 ~ +150	0.98	1.0	10	1	15(Q Tj)	50	100/100	35	100/200	20	0.072
	1.0	面実装(SFP)	SFPL-62	25	40 ~ +150	0.98	2.0	10	1	15(Q Tj)	50	100/100	35	100/200	20	0.072
	1.0	面実装(SJP)	SJPL-D2*	25	40 ~ +150	0.98	1.0	10	1	150	50	100/100	35	100/200	20	0.072
	1.5	面実装(SJP)	SJPL-F2*	25	40 ~ +150	0.98	1.5	10	1	150	50	100/100	35	100/200	20	0.072
	1.5	面実装(SFP)	SFPX-62	30	40 ~ +150	0.98	1.5	10	2	15(Q Tj)	30	100/100	25	100/200	20	0.072
	1.5	面実装(SJP)	SJXP-F2*	30	40 ~ +150	0.98	1.5	10	2	150	30	100/100	25	100/200	20	0.072
	3.0	面実装(Dパック)	SPX-G32S	50	40 ~ +150	0.98	3.0	50	10	100	30	100/100	25	100/200	5.0	0.41
	6.0	面実装(Dパック)Center-tap	SPX-62S	80	40 ~ +150	0.98	3.0	50	10	100	30	100/100	25	100/200	5.0	0.41
	10.0	面実装(TO220S)	MPL-102S	65	40 ~ +150	0.98	5.0	100	0.2	150	40	100/100	30	100/200	2.5	1.4
300	20.0	面実装(TO220S)Center-tap	MP2-202S	110	40 ~ +150	0.98	10.0	200	0.4	150	50	100/100	35	100/200	2.5	1.4
	2.0	面実装(SFP)	SFPX-63	20	40 ~ +150	1.3	2.0	50	3	150	30	100/100	25	100/200	20	0.072
	2.0	面実装(SJP)	SJXP-H3*	20	40 ~ +150	1.3	2.0	50	3	150	30	100/100	25	100/200	20	0.072
	10.0	面実装(TO220S)Center-tap	MPX-2103	65	40 ~ +150	1.3	5.0	50	15	15(Q Tj)	30	100/100	25	100/200	2.5	1.4
400	1.0	面実装(SFP)	SFPL-64	25	40 ~ +150	1.3	1.0	10	0.05	150	50	100/100	30	100/200	20	0.072
	1.0	面実装(SJP)	SJPL-D4*	25	40 ~ +150	1.3	1.0	10	0.05	150	50	100/100	30	100/200	20	0.072
	10.0	面実装(TO-263)	MPXA-1104S	100	40 ~ +150	1.5	10.0	100	30	15(Q Tj)	25	500/500	-	-	2.5	1.04
600	1.0	面実装(SFP)	SFPX-66	20	40 ~ +150	1.35	1.0	10	3	15(Q Tj)	30	100/100	20	100/200	20	0.072
	1.0	面実装(SJP)	SJXP-D6*	20	40 ~ +150	1.35	1.0	10	3	150	30	100/100	20	100/200	20	0.072
	3.0	面実装(TO-263)	MPL-1036S	50	40 ~ +150	1.75	3.0	50	0.1	15(Q Tj)	50	100/100	-	-	2.5	1.04
	10.0	面実装(TO-263)	MPXA-1106S	100	40 ~ +150	1.98	10.0	100	30	15(Q Tj)	28	500/500	-	-	2.5	1.04
	30.0	面実装(TO220S)	MP3-306	180	40 ~ +150	1.7	30.0	100	0.5	15(Q Tj)	150	500/500	70	500/1000	2.0	1.4

\*開発中

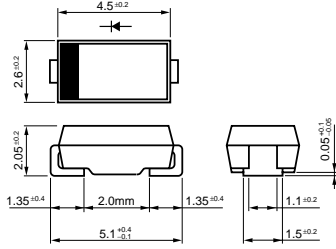
## リード挿入

V <sub>RM</sub> (V)	I <sub>F</sub> (AV) (A) ( )フィン付	パッケージ Axial (ボディア径/リード径)	品名	I <sub>FSM</sub> (A)	T <sub>J</sub> ( )	T <sub>stg</sub> ( )	V <sub>F</sub> (V) max	I <sub>F</sub>	I <sub>R</sub>	I <sub>F</sub> (H)	T <sub>a</sub> ( )	trr <sup>①</sup> (ns)	trr <sup>②</sup> (ns)	R <sub>th(j-l)</sub> ( /W)	質量 (g)	
				50Hz 正弦半波単発				(A)	(μA) V <sub>R</sub> =V <sub>RM</sub> max	(mA) V <sub>R</sub> =V <sub>RM</sub> max						
70	1.0	Axial( 2.4/ 0.6 )	AG01Y	25	40 ~ +150	1.2	1.0	100	0.5	100	100	100/100	50	100/200	22	0.13
	1.0	Axial( 2.7/ 0.6 )	EG01Y	30	40 ~ +150	1.2	1.0	100	0.5	100	100	100/100	50	100/200	20	0.2
	1.1	Axial( 2.7/ 0.78 )	EG 1Y	30	40 ~ +150	1.2	1.1	100	0.5	100	100	100/100	50	100/200	17	0.3
	1.5	Axial( 4.0/ 0.78 )	RG 10Y	50	40 ~ +150	1.1	1.5	500	2.5	100	100	100/100	50	100/200	15	0.4
	1.5	Axial( 4.0/ 0.98 )	RG 2Y	50	40 ~ +150	1.1	1.5	500	2.5	100	100	100/100	50	100/200	12	0.6
	2.0( 3.5 )	Axial( 6.5/ 1.4 )	RG 4Y	100	40 ~ +150	1.3	3.5	1000	5	100	100	100/100	50	100/200	8	1.2
200	0.7	Axial( 2.4/ 0.6 )	AG01Z	15	40 ~ +150	1.8	0.7	100	0.5	100	100	100/100	50	100/200	22	0.13
	0.7	Axial( 2.7/ 0.6 )	EG01Z	15	40 ~ +150	1.9	0.7	50	0.3	100	100	100/100	50	100/200	20	0.2
	0.8	Axial( 2.7/ 0.78 )	EG 1Z	15	40 ~ +150	1.7	0.8	50	0.3	100	100	100/100	50	100/200	17	0.3
	1.0	Axial( 2.4/ 0.6 )	AL01Z	25	40 ~ +150	0.98	1.0	100	0.5	100	50	100/100	35	100/200	22	0.13
	1.0	Axial( 2.7/ 0.6 )	EN 01Z	50	40 ~ +150	0.92	1.0	10	2	15(Q Tj)	100	100/100	50	100/200	20	0.2
	1.2	Axial( 4.0/ 0.78 )	RG 10Z	50	40 ~ +150	1.5	1.2	500	2.5	100	100	100/100	50	100/200	15	0.4
	1.2	Axial( 4.0/ 0.98 )	RG 2Z	50	40 ~ +150	1.5	1.5	500	2.5	100	100	100/100	50	100/200	12	0.6
	1.5	Axial( 2.7/ 0.78 )	EL 1Z	20	40 ~ +150	0.98	1.5	100	0.5	100	100	100/100	50	100/200	17	0.3
	1.5	Axial( 2.7/ 0.6 )	EL02Z	25	40 ~ +150	0.98	1.5	50	0.1	100	40	100/100	30	100/200	20	0.2
	1.5	Axial( 4.0/ 0.78 )	RN 1Z	60	40 ~ +150	0.92	1.5	20	3	15(Q Tj)	100	100/100	50	100/200	15	0.4
	2.0	Axial( 4.0/ 0.78 )	RX 10Z	30	40 ~ +150	0.98	2.0	50	3	15(Q Tj)	30	100/100	25	100/200	15	0.4
	2.0	Axial( 4.0/ 0.78 )	RL 10Z	30	40 ~ +150	0.98	2.0	50	0.1	100	50	100/100	35	100/200	15	0.4
	2.0	Axial( 4.0/ 0.98 )	RL 2Z	30	40 ~ +150	0.98	2.0	100	0.5	100	50	100/100	35	100/200	12	0.6
	2.0	Axial( 4.0/ 0.98 )	RN 2Z	70	40 ~ +150	0.92	2.0	50	4	15(Q Tj)	100	100/100	50	100/200	12	0.6
	3.0	Axial( 5.2/ 1.2 )	RX 3Z	80	40 ~ +150	0.98	3.0	50	10	100	30	100/100	25	100/200	10	1.0
	3.0	Axial( 5.2/ 1.2 )	RN 3Z	80	40 ~ +150	0.92	3.0	50	6	15(Q Tj)	100	100/100	50	100/200	10	0.6
	1.0( 3.0 )	Axial( 6.5/ 1.4 )	RG 4ZS	80	40 ~ +150	1.7	3.0	1000	5	100	100	100/100	50	100/200	8	1.2
	3.5	Axial( 5.2/ 1.2 )	RL 3Z	80	40 ~ +150	0.95	3.5	50	0.2	100	50	100/100	35	100/200	10	1.0
	3.5	Axial( 6.5/ 1.4 )	RL 4Z	80	40 ~ +150	0.95	3.5	150	0.5	100	50	100/100	35	100/200	8	1.2
	3.5	Axial( 6.5/ 1.4 )	RN 4Z	120	40 ~ +150	0.92	3.5	50	6	15(Q Tj)	100	100/100	50	100/200	8	1.2
	5.0	TO-220F( Center-tap )	FML-12S	35	40 ~ +150	0.98	2.5	150	0.5	100	40	100/100	30	100/200	4.0	2.1
	5.0	TO-220F( Center-tap )	FMG-12S, R	35	40 ~ +150	1.8	2.5	500	1.5	100	100	100/100	50	100/200	4.0	2.1
	5.0	TO-220F( Center-tap )	FMX-12S	35	40 ~ +150	0.98	2.5	50	10	100	30	100/100	25	100/200	4.0	2.1
	5.0	TO-220F2Pin	FMP-G12S	65	40 ~ +150	1.15	5.0	50	0.5	100	150	100/100	70	100/200	4.0	2.1
	5.0	TO-220F2Pin	FML-G12S	65	40 ~ +150	0.98	5.0	250	1	100	40	100/100	30	100/200	4.0	2.1
	5.0	TO-220F2Pin	FMX-G12S	65	40 ~ +150	0.98	5.0	100	20	100	30	100/100	25	100/200	4.0	2.1
	5.0	TO-220F2Pin	FMN-G12S	100	40 ~ +150	0.92	5.0	100	10	150	100	100/100	50	100/200	4.0	2.1
	10.0	TO-220F( Center-tap )	FMXA-2102ST	100	40 ~ +150	1.2	5.0	100	20	15(Q Tj)	25	500/500	-	-	4.0	2.1

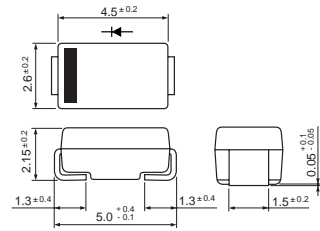
・No. 1 面実装 (小型)



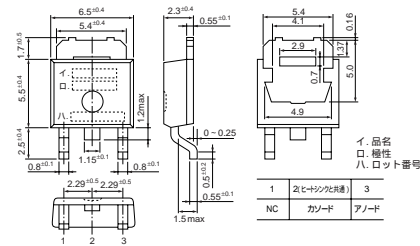
・No. 2 面実装 (SFP)



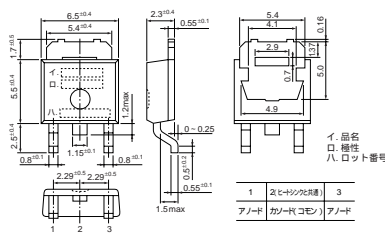
・No. 3 面実装 (SJP)



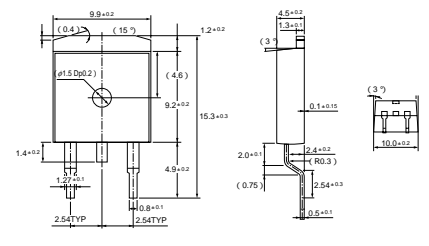
・No. 4 面実装 (Dパック)



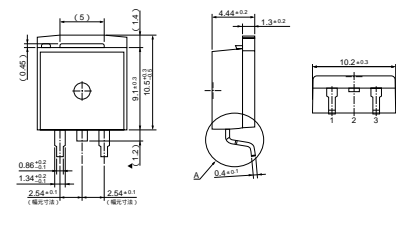
・No. 5 面実装 (Dパック) Center-tap



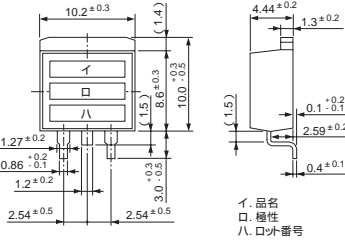
・No. 6 面実装 (TO263)



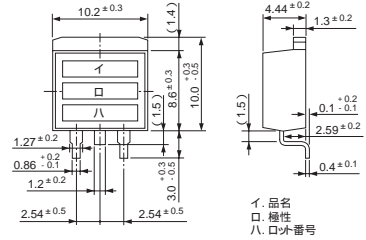
・No. 7 面実装 (TO220S)  
MPL-102S, MP2-202S



・No. 8 面実装 (TO220S)

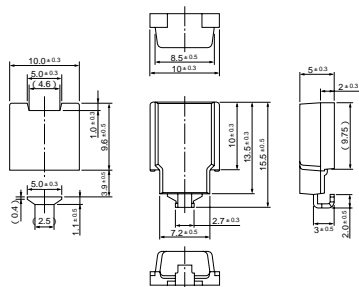


・No. 9 面実装 (TO220S) Center-tap

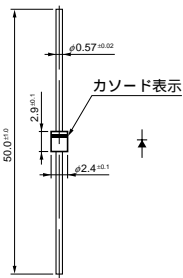


はフレームと共通

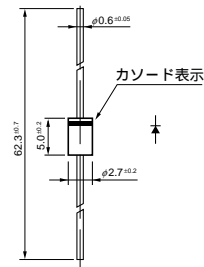
・No. 10 面実装 (SZ-10)



・No. 11 Axial ( 2.4/ 0.6 )

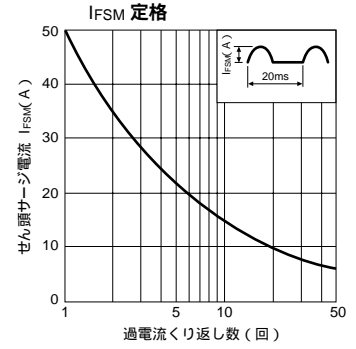
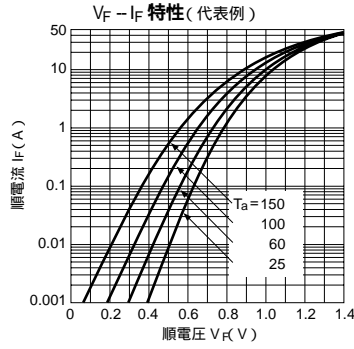
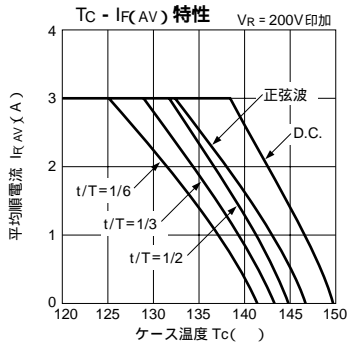


・No. 12 Axial ( 2.7/ 0.6 )

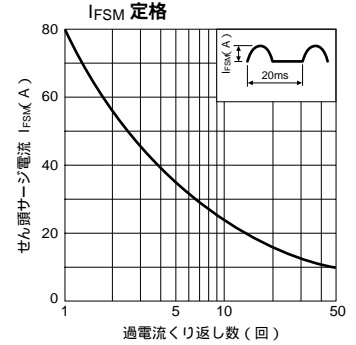
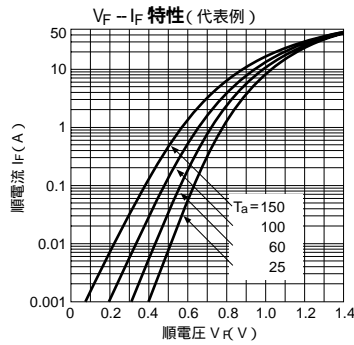
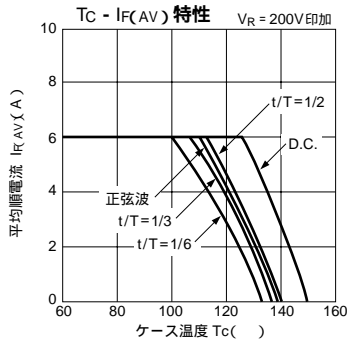


# 特性図 超高速整流ダイオード

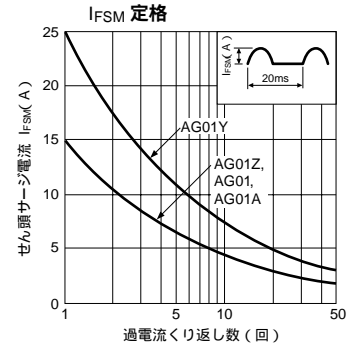
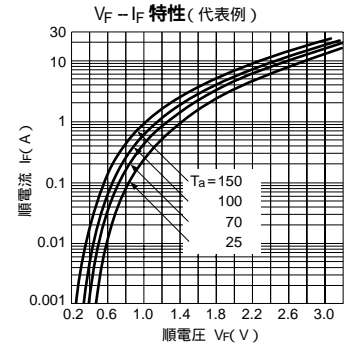
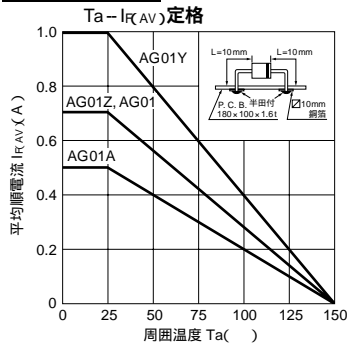
## SPX-G32S



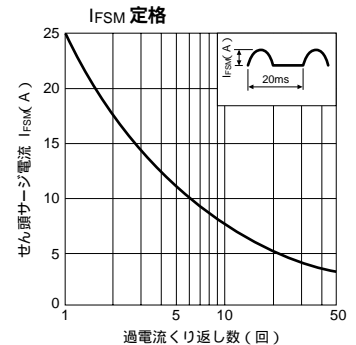
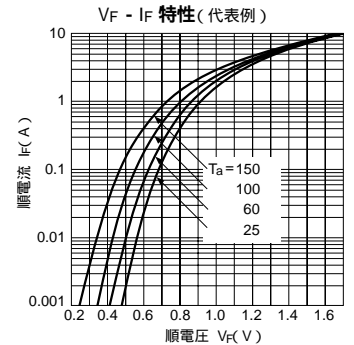
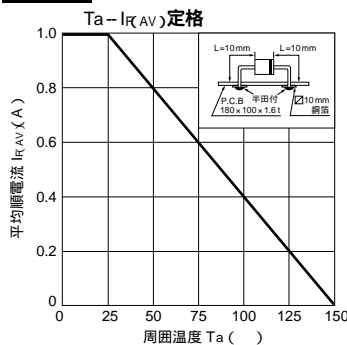
## SPX-62S



## AG01シリーズ



## AL01Z



## EG01Y, EG01Z, EG01

