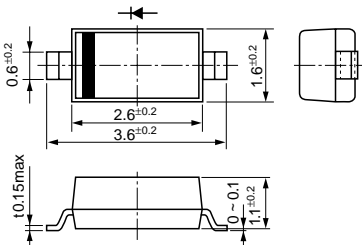


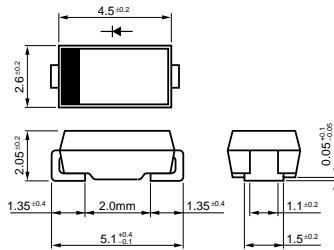
4-2 高速整流ダイオード

V _{RM} (V)	I _F (AV) (A) (フィン付)	パッケージ Axial (ボディ径/リード径)	品名	I _{FSM} (A)	T _j ()	T _{stg} ()	V _F (V) max	I _F (A)	I _R (μ A) V _R =V _{RM} max	I _R (H) (μ A) V _R =V _{RM} max	T _a ()	trr ^① (μ s)	I _F /I _{RP} (mA)	trr ^② (μ s)	I _F /I _{RP} (mA)	R _{th(j-l)} R _{th(j-c)} ($^{\circ}$ C/W)	質量 (g)
				50Hz 正弦半波単発													
600	0.8	Axia(2.4/ 0.6)	AU02A	25	40 ~ +150		1.3	0.8	10	250	100	0.4	10/10	0.18	10/20	22	0.13
	1.0	Axia(2.7/ 0.6)	EU02A	15	40 ~ +150		1.4	1.0	10	300	100	0.4	10/10	0.18	10/20	20	0.2
	1.0	Axia(2.7/ 0.78)	EU 2A	15	40 ~ +150		1.4	1.0	10	300	100	0.4	10/10	0.18	10/20	17	0.3
	1.0	Axia(4.0/ 0.78)	RU 2	20	40 ~ +150		1.5	1.0	10	300	100	0.4	10/10	0.18	10/20	15	0.4
	1.1	Axia(4.0/ 0.78)	RU 2AM	20	40 ~ +150		1.2	1.1	10	300	100	0.4	10/10	0.18	10/20	15	0.4
	1.5	Axia(4.0/ 0.98)	RU 3A	20	40 ~ +150		1.5	1.5	10	400	100	0.4	10/10	0.18	10/20	12	0.6
	1.5	Axia(4.0/ 0.78)	RU 20A	50	40 ~ +150		1.1	1.5	10	350	100	0.4	10/10	0.18	10/20	15	0.4
	1.5	Axia(4.0/ 0.98)	RU 3AM	50	40 ~ +150		1.1	1.5	10	350	100	0.4	10/10	0.18	10/20	12	0.6
	2.0	Axia(5.2/ 1.2)	RU 30A	200	40 ~ +150		0.95	2.0	10	300	100	0.4	100/100	0.18	100/200	10	1.0
	3.0	Axia(5.2/ 1.2)	RU 31A	150	40 ~ +150		1.2	3.0	50	500	100	0.4	100/100	0.18	100/200	10	1.0
	1.5(3.0)	Axia(6.5/ 1.4)	RU 4A	50	40 ~ +150		1.5	3.0	10	300	100	0.4	10/10	0.18	10/20	8	1.2
	2.0(3.5)	Axia(6.5/ 1.4)	RU 4AM	70	40 ~ +150		1.3	3.5	10	300	100	0.4	100/100	0.18	100/200	8	1.2
	5.0	TO-220F2Pin	FMU-G16S	30	40 ~ +150		1.25	5.0	50	500	100	0.4	100/100	0.18	100/200	4.0	2.1
	5.0	TO-220R Center-tap	FMU-16S, R	30	40 ~ +150		1.5	2.5	50	500	100	0.4	100/100	0.18	100/200	4.0	2.1
10	TO-220R Center-tap	FMU-26S, R	40	40 ~ +150		1.5	5.0	50	500	100	0.4	100/100	0.18	100/200	4.0	2.1	
10	TO-220F2Pin	FMU-G26S	40	40 ~ +150		1.35	10	50	500	100	0.4	100/100	0.18	100/200	4.0	2.1	
800	0.25	Axia(4.0/ 0.78)	RU 1B	15	40 ~ +150		2.5	0.25	10	200	100	0.4	10/10	0.18	10/20	15	0.4
	0.6	Axia(4.0/ 0.78)	RF 1B	15	40 ~ +150		2.0	0.6	10	200	100	0.4	10/10	0.18	10/20	15	0.4
	0.6	Axia(4.0/ 0.78)	RH 1B	35	40 ~ +150		1.3	0.6	5	70	150	4	10/10	1.3	10/20	15	0.4
	0.7	Axia(4.0/ 0.78)	RS 1B	30	40 ~ +150		2.5	0.8	10	200	100	1.5	10/10	0.6	10/20	20	0.4
	1.0	Axia(4.0/ 0.78)	RU 2B	20	40 ~ +150		1.5	1.0	10	300	100	0.4	10/10	0.18	10/20	15	0.4
	1.1	Axia(4.0/ 0.98)	RU 3B	20	40 ~ +150		1.5	1.0	10	400	100	0.4	10/10	0.18	10/20	12	0.6
	1.5(3.0)	Axia(6.5/ 1.4)	RU 4B	50	40 ~ +150		1.6	3.0	10	500	100	0.4	10/10	0.18	10/20	8	1.2
1000	0.2	Axia(4.0/ 0.78)	RU 1C	15	40 ~ +150		3.0	0.25	10	200	100	0.4	10/10	0.18	10/20	15	0.4
	0.6	Axia(4.0/ 0.78)	RH 1C	35	40 ~ +150		1.3	0.6	5	70	150	4	10/10	1.3	10/20	15	0.4
	0.8	Axia(4.0/ 0.78)	RU 2C	20	40 ~ +150		1.5	1.0	10	300	100	0.4	10/10	0.18	10/20	15	0.4
	1.5	Axia(4.0/ 0.98)	RU 3C	20	40 ~ +150		2.5	1.5	10	400	100	0.4	10/10	0.18	10/20	12	0.6
	1.5(2.5)	Axia(6.5/ 1.4)	RU 4C	50	40 ~ +150		1.6	3.0	50	500	100	0.4	100/100	0.18	100/200	8	1.2
1300	1.0	Axia(4.0/ 0.98)	RH 2D	60	40 ~ +150		1.0	1.0	10	500	100	4	10/10	1.3	100/200	12	0.6
	1.2(1.5)	Axia(6.5/ 1.4)	RU 4D	50	40 ~ +150		1.8	1.5	50	500	100	0.4	500/500	0.18	500/1000	8	1.2
	1.5(2.5)	Axia(6.5/ 1.4)	RU 4DS	50	40 ~ +150		1.8	3.0	50	500	100	0.4	500/500	0.18	500/1000	8	1.2
1500	0.5	Axia(2.7/ 0.6)	ES01F	20	40 ~ +150		2.0	0.5	10	200	100	1.5	10/10	0.6	10/20	20	0.2
	0.5	Axia(2.7/ 0.78)	ES 1F	20	40 ~ +150		2.0	0.5	10	200	100	1.5	10/10	0.6	10/20	17	0.3
	0.8	Axia(4.0/ 0.78)	RH 10F	60	40 ~ +150		1.0	1.0	10	500	100	4	10/10	1.3	100/200	15	0.4
	1.0	Axia(4.0/ 0.98)	RH 2F	60	40 ~ +150		1.0	1.0	10	500	100	4	10/10	1.3	100/200	12	0.6
	2.0	Axia(5.2/ 1.2)	RS 3FS	50	40 ~ +150		1.1	3.0	50	500	100	2	100/100	0.8	100/200	10	1.0
	2.0	Axia(5.2/ 1.2)	RP 3F	50	40 ~ +150		1.7	2.0	50	500	100	0.7	500/500	0.3	500/1000	10	1.0
	2.5	Axia(5.2/ 1.2)	RH 3F	50	40 ~ +150		1.3	2.5	50	500	100	4	100/100	1.3	100/200	10	1.0
	1.5(2.5)	Axia(6.5/ 1.4)	RS 4FS	50	40 ~ +150		1.5	3.0	50	500	100	1	100/100	0.4	100/200	8	1.2
	2.5	Axia(6.5/ 1.4)	RH 4F	50	40 ~ +150		1.5	2.5	10	350	100	4	100/100	1.3	100/200	8	1.2
	5.0	TO-220F2Pin	FMQ-G1FS	50	40 ~ +150		5.0	5.0	50	500	150	0.7	500/500	0.3	500/1000	4.0	2.1
	10	TO-220F2Pin	FMQ-G2FS	50	40 ~ +150		2.8	10	50	500	150(T _j)	0.5	500/500	0.2	500/1000	4.0	2.1
	10	TO-220F2Pin	FMU-G2FS	50	40 ~ +150		1.6	10	50	6000	150(T _j)	0.6	500/500	0.25	500/1000	4.0	2.1
	10	TO-220F2Pin	FMQ-G2FLS	50	40 ~ +150		1.8	10	50	500	150(T _j)	1.2	500/500	0.4	500/1000	4.0	2.1
10	TO-220F2Pin	FMQ-G2FMS	50	40 ~ +150		2.4	10	50	500	150	0.5	500/500	0.25	500/1000	4.0	2.1	
10	TO-3PF2Pin	FMQ-G5FMS	50	40 ~ +150		2.4	10	50	500	100	0.5	500/500	0.2	500/1000	2	6.5	
10	TO-3PF2Pin	FMV-G5FS	50	40 ~ +150		1.5	10	50	700	100	2.0	500/500	0.8	500/1000	2	6.5	
1600	2.5	Axia(5.2/ 1.2)	RH 3G	50	40 ~ +150		1.3	2.5	50	500	100	4	100/100	1.3	100/200	10	1.0
1700	10	TO-3PF2Pin	FMQ-G5GS	50	40 ~ +150		2.7	10	100	500	100	0.5	500/500	0.2	500/1000	2	6.5
1800	8.0	TO-3PF2Pin	FMP-G5HS	50	40 ~ +150		2.0	8	25	250	100	1.0	500/500	0.4	500/1000	2	6.5
	10	TO-3PF2Pin	FMR-G5HS	50	40 ~ +150		1.6	10	20	200	100	1.8	500/500	0.7	500/1000	2	6.5
2000	0.2	Axia(4.0/ 0.78)	RC 2	20	40 ~ +150		2.0	0.2	10	300	100	4.0	10/10	1.3	10/20	15	0.4

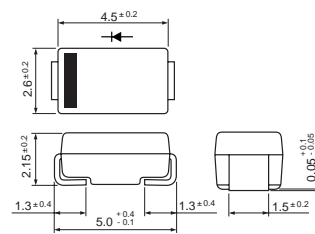
・No. 1 面実装 (小型)



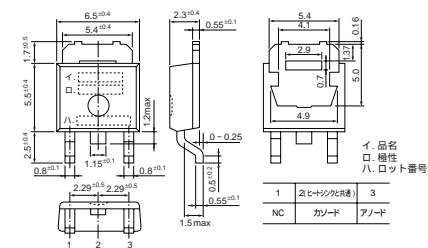
・No. 2 面実装 (SFP)



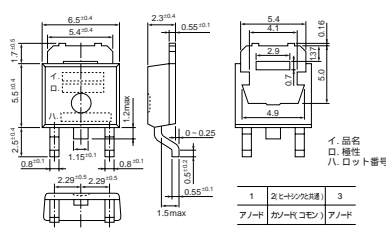
・No. 3 面実装 (SJP)



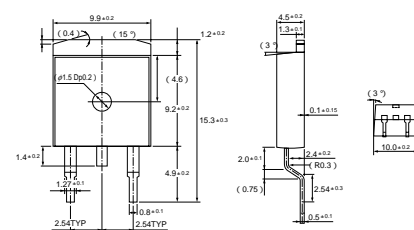
・No. 4 面実装 (Dパック)



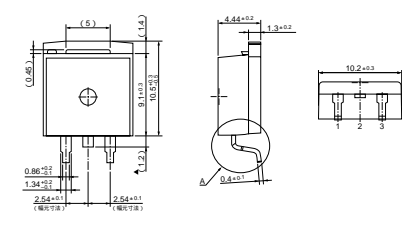
・No. 5 面実装 (Dパック) Center-tap



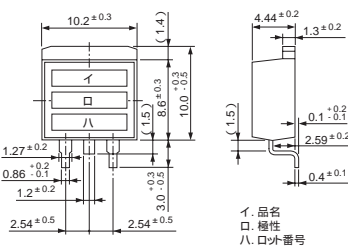
・No. 6 面実装 (TO263)



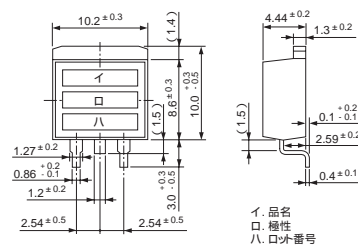
・No. 7 面実装 (TO220S)
MPL-102S, MP2-202S



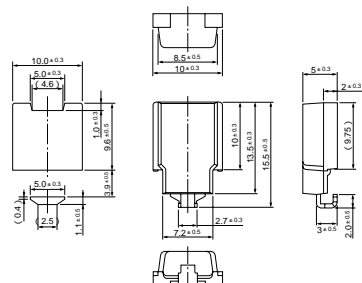
・No. 8 面実装 (TO220S)



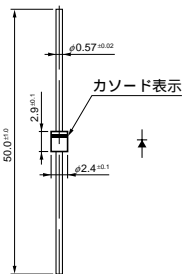
・No. 9 面実装 (TO220S) Center-tap



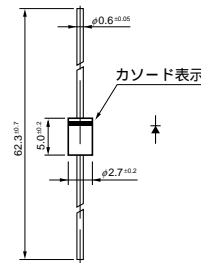
・No. 10 面実装 (SZ-10)



・No. 11 Axial (2.4/ 0.6)

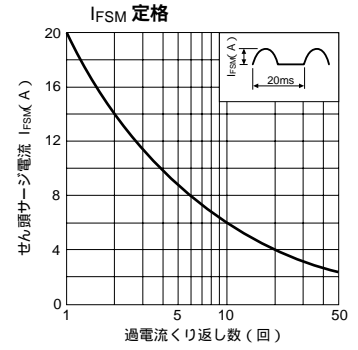
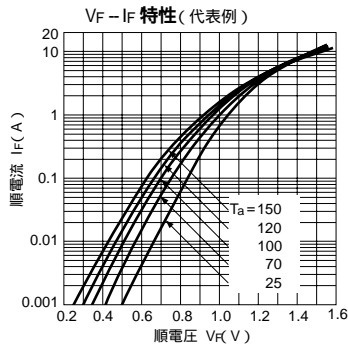
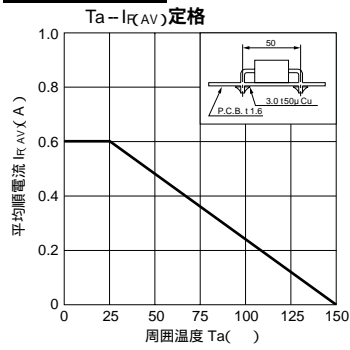


・No. 12 Axial (2.7/ 0.6)

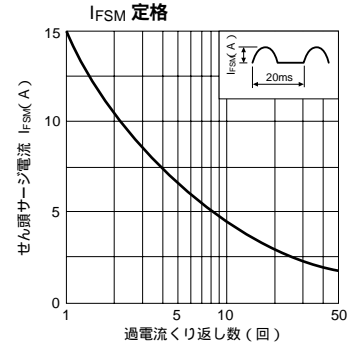
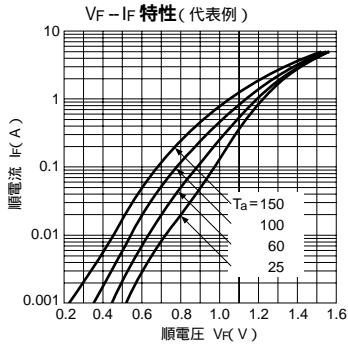
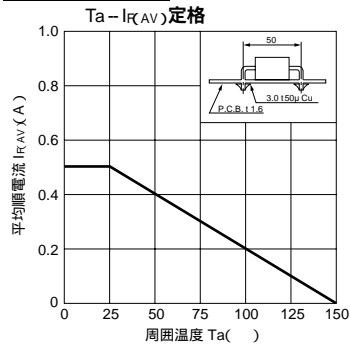


特性図 高速整流ダイオード

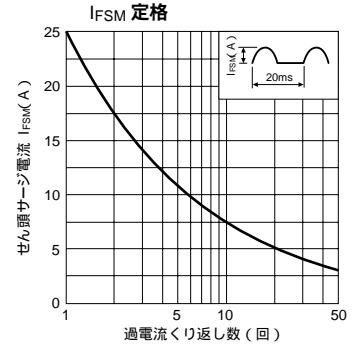
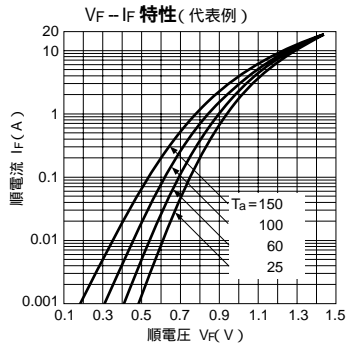
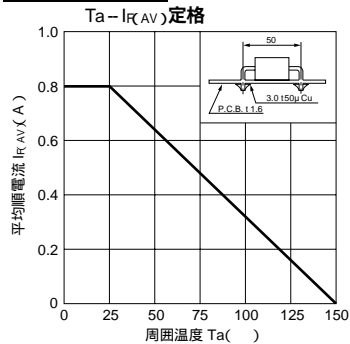
AS01 シリーズ



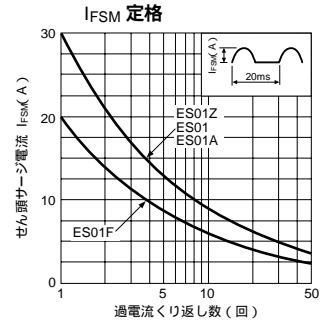
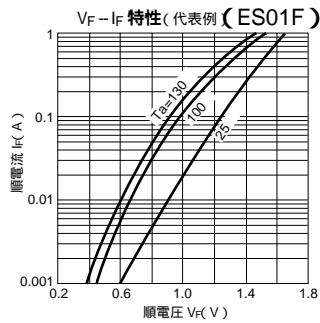
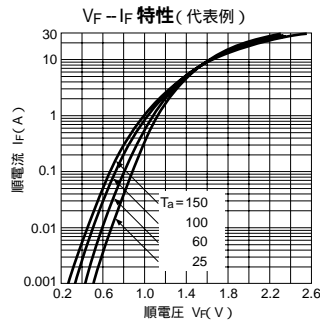
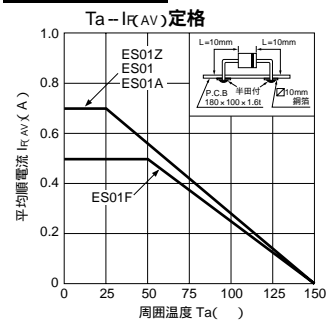
AU01 シリーズ



AU02 シリーズ



ES01 シリーズ



EU01 シリーズ

