

ELC90

V007-01-01A

SPECIFICATIONS

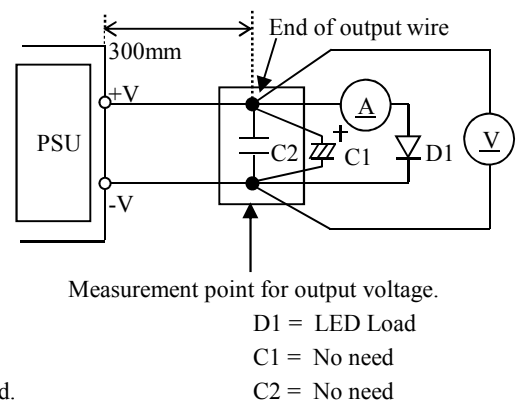
MODEL			ELC90-130-R70
ITEMS			
1	Nominal Output Current	A	0.70
2	Output Voltage Range	V	50 - 130
3	Maximum Output Power	W	91
4	Efficiency (Typ.) (*1)	100VAC	85
		200VAC	88
5	Input Voltage Range (*2)	-	90 - 305VAC (47Hz - 63Hz)
6	Input Current (Typ.) (*1)	-	1.13A at 100VAC, 0.56A at 200VAC
7	Inrush Current (Typ.) (*3)	-	25A at 100VAC, 50A at 200VAC, Ta = 25°C, Cold Start
8	Harmonic Current	-	Designed to meet IEC61000-3-2 Class C (Load: 100VAC/230VAC:50% - 100%)
9	Power Factor (Typ.) (*1)	-	0.99 at 100VAC, 0.95 at 200VAC
10	Output Current Accuracy (*4,5)	-	±5%
11	Total Regulation (*5)	-	±5%
12	Short Circuit Protection	-	Automatic recovery
13	Over Voltage Protection (*6)	-	>110%
14	Turn On Time (Typ.)	-	400 ms at 25°C
15	Operating Temperature (*7)	-	-25 - +50°C
16	IP Class (*8)	-	IP66
17	Operating Humidity	-	15 - 90%RH (No Condensing)
18	Storage Temperature	-	-30 - +85°C
19	Storage Humidity	-	15 - 90%RH (No Condensing)
20	Cooling	-	Convection Cooling
21	Withstand Voltage (*9)	-	Input - (Output & FG) ... 3kVAC, for 1 min (10mA Max)
22	Isolation Resistance	-	>100MΩ at 25°C and 70 %RH. Output - FG : 500VDC
23	Leakage Current (*10)	-	Less than 0.25mA. 0.05mA(Typ) at 100VAC / 0.1mA(Typ) at 200VAC
24	Vibration	-	At no operating, 10 - 55Hz (Sweep for 1min) 19.6m/s ² Constant, X,Y,Z 1hour each.
25	Shock (In Package)	-	Less than 196.1m/s ²
26	EMI (Conducted & Radiated Emission)	-	Designed to meet EN55015 ; EN55022-B ; VCCI-B ; CISPR 22-B ; FCC-B
27	Immunity	-	Designed to meet IEC61000-6-2 IEC61000-4-2, -3, -4, -5, -6, -8, -11
28	Safety Standard	-	PSE mark (Den-an Appendix 8) Designed to meet UL1012, UL8750, EN61347-1, EN61347-2-13, EN62384
29	Weight (Typ.)	g	830
30	Size (L x W x H)	mm	L:228 (253 including mounting bracket) W:45.5 H:40.2

*Read instruction manual carefully, before using the power supply unit.

=NOTES=

- *1 : At maximum output power, Ta = 25°C after warm up.
- *2 : For cases where conformance to various safety specs (UL,Den-an,EN) are required, to be described as 100-240VAC (100-277V for USA), 50/60Hz on name plate.
- *3 : Not applicable for the in-rush current to noise filter for less than 0.2ms.
- *4 : At Vin=100/200VAC & maximum output power, Ta = 25°C.
- *5 : Refer to Fig. A for measurement determination.
- *6 : OVP circuit will shutdown output, manual reset (Re-power on).
- *7 : For cases where conformance to safety specs, operating case or ambient temperature will be specified. Please refer instruction manual.
- *8 : Conditions : Please refer instruction manual.
- *9 : Output and FG must be shorted together when testing. Otherwise PS will be spoiled.
- *10 : Measured by measuring method of Den-an (at 60Hz), Ta=25°C.

Figure A measurement setup



ELC90

V007-01-02

OUTPUT DERATING

*COOLING : CONVECTION COOLING

Derating Table	Ta (°C)	LOAD (%)
ELC90-130-R70	-25 - +50	38 - 100

