

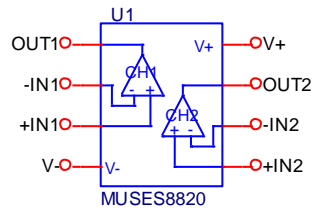
# Device Modeling Report

COMPONENTS: OPERATIONAL AMPLIFIER  
PART NUMBER: MUSES8820  
MANUFACTURER: New Japan Radio  
REMARK TYPE: (OPAMP)



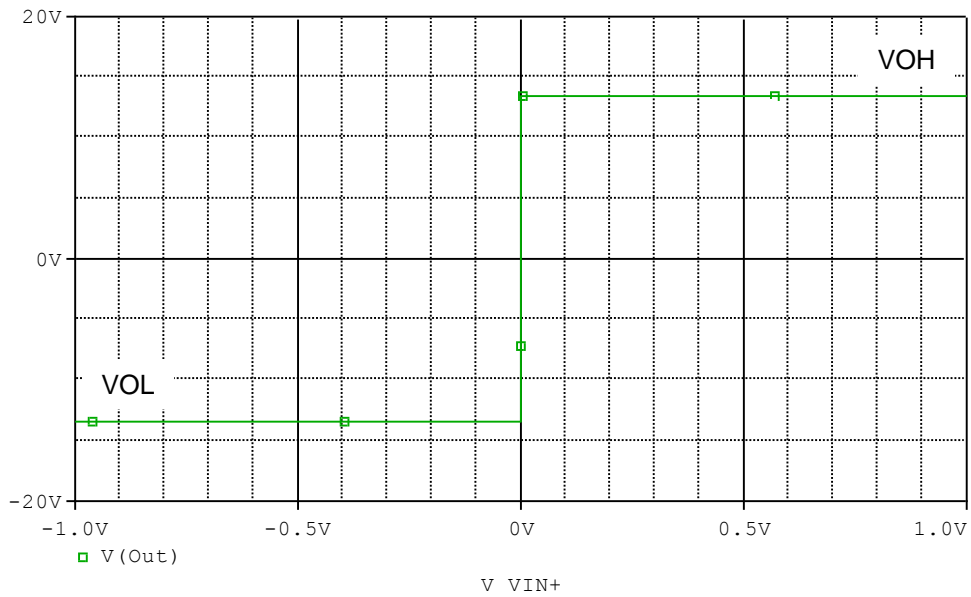
**Bee Technologies Inc.**

## SPICE MODEL

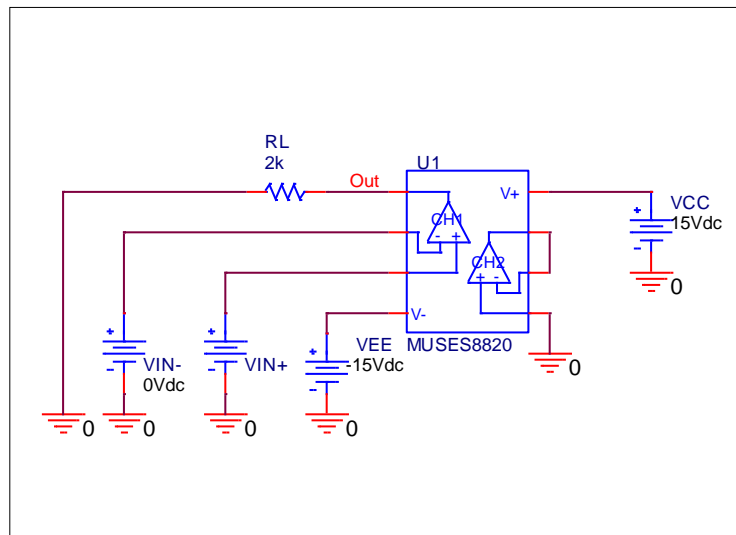


# Output Voltage Swing

## Simulation result



## Evaluation circuit

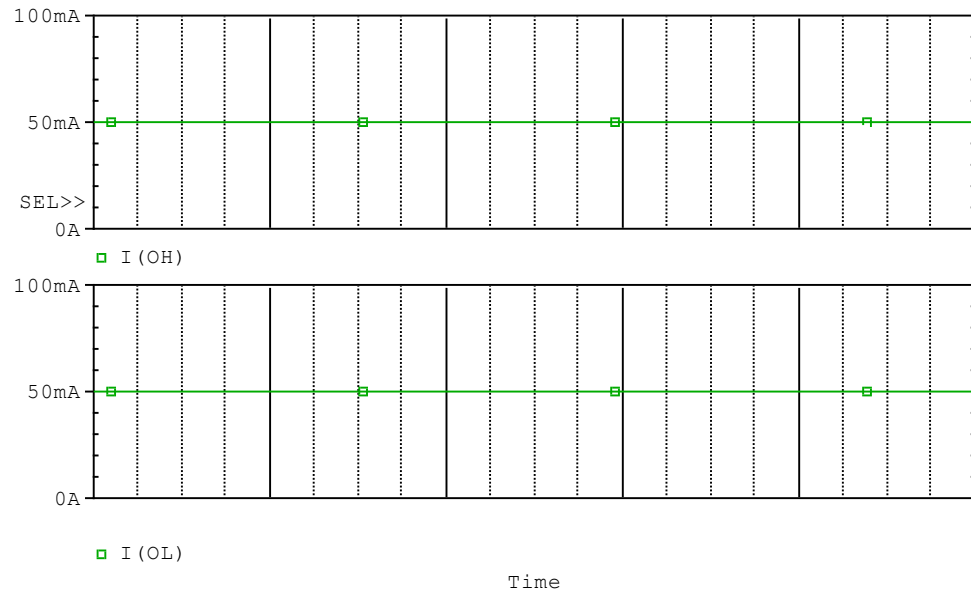


## Comparison table

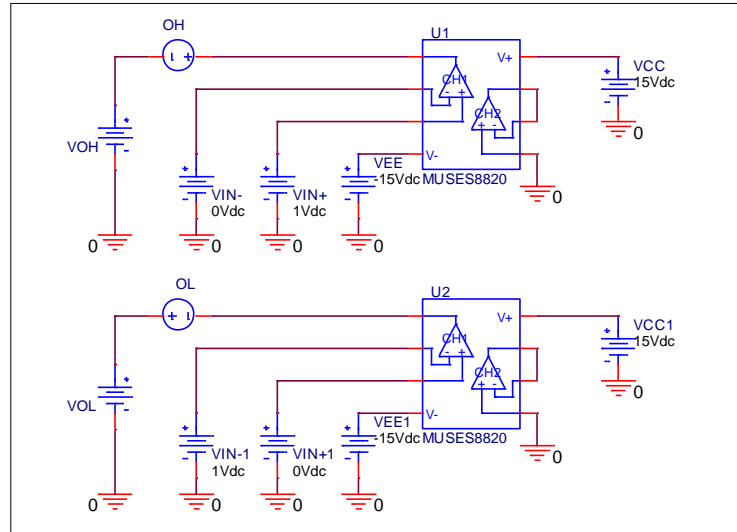
Parameter	Measurement	Simulation	%Error
VOH (V)	13.500	13.497	-0.02
VOL (V)	-13.500	-13.497	-0.02

# Output Short Circuit Current

## Simulation result



## Evaluation circuit

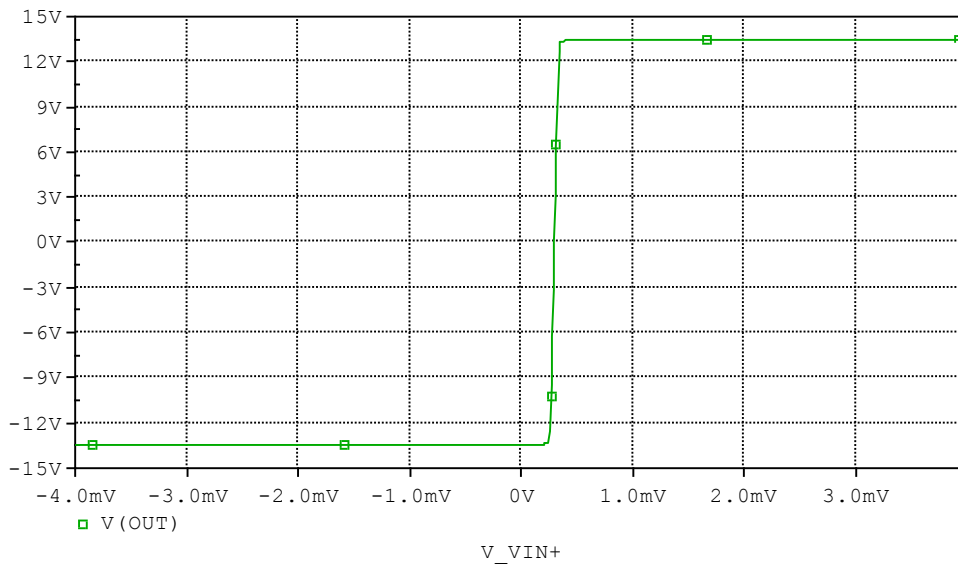


## Comparison table

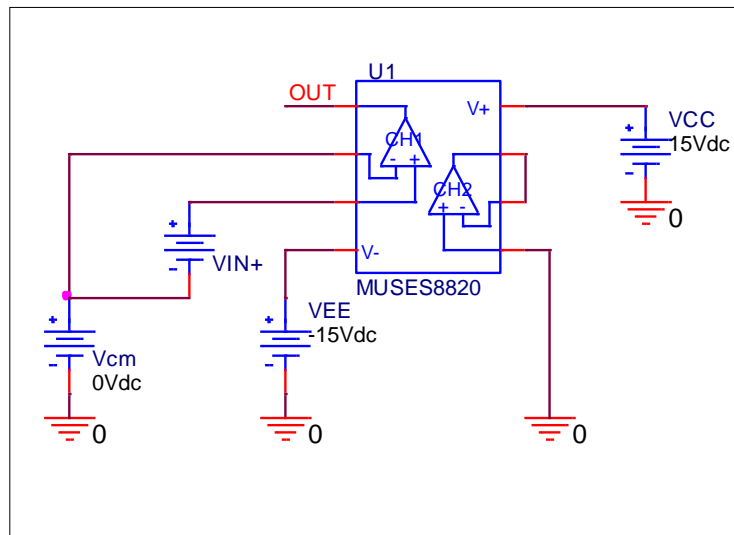
Parameter	Measurement	Simulation	%Error
IOH (mA)	50.000	50.075	0.15
IOL (mA)	50.000	50.075	0.15

# Input Offset Voltage

## Simulation result



## Evaluation circuit

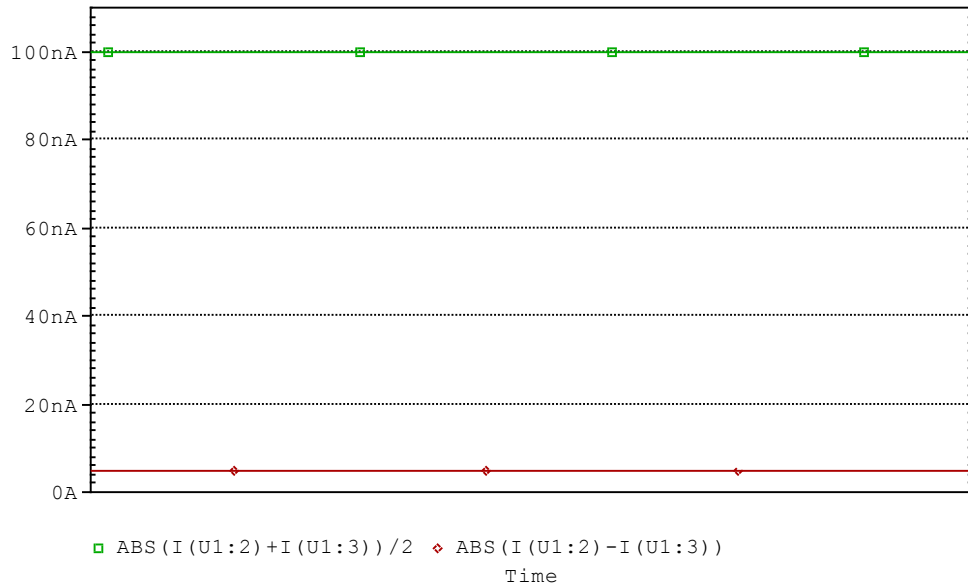


## Comparison table

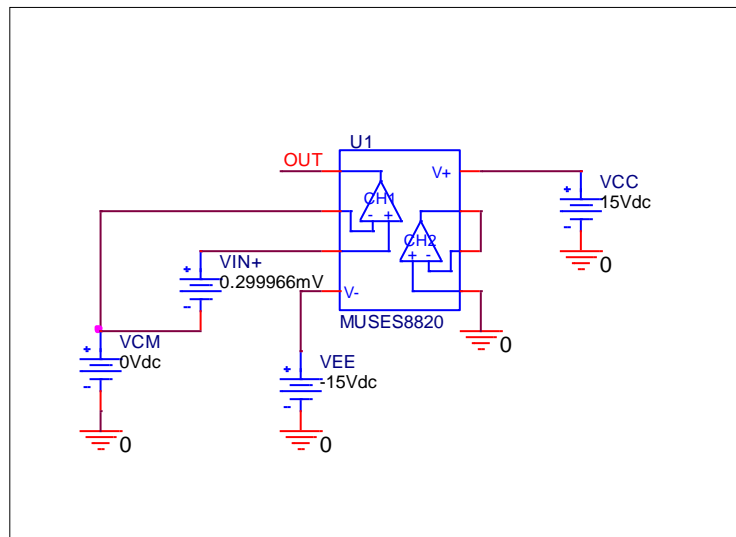
Parameter	Measurement	Simulation	%Error
Vio (mV)	0.300	0.300	-0.01

# Input Current Ib, Ibos

## Simulation result



## Evaluation circuit

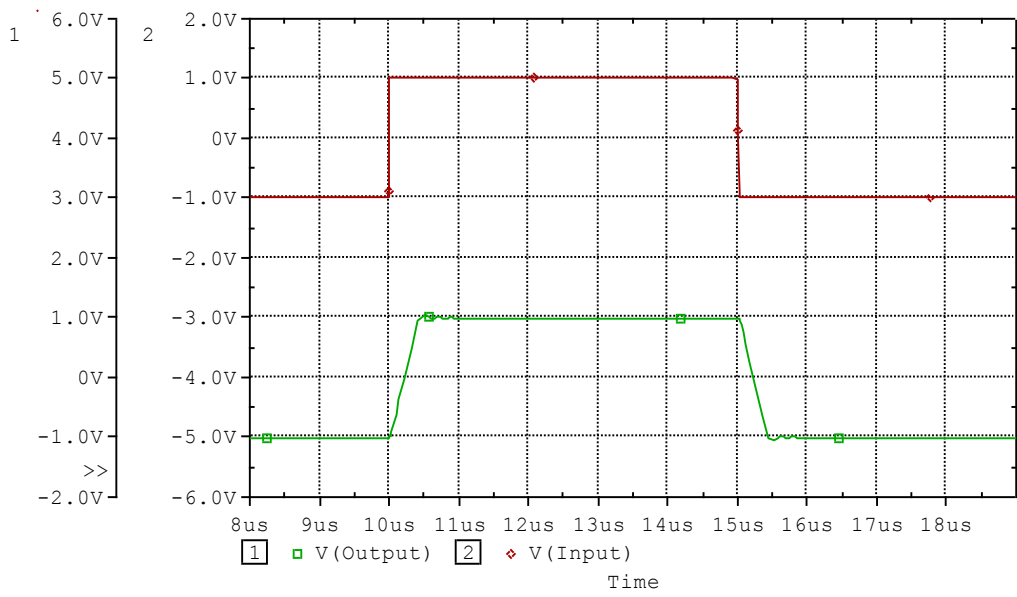


## Comparison table

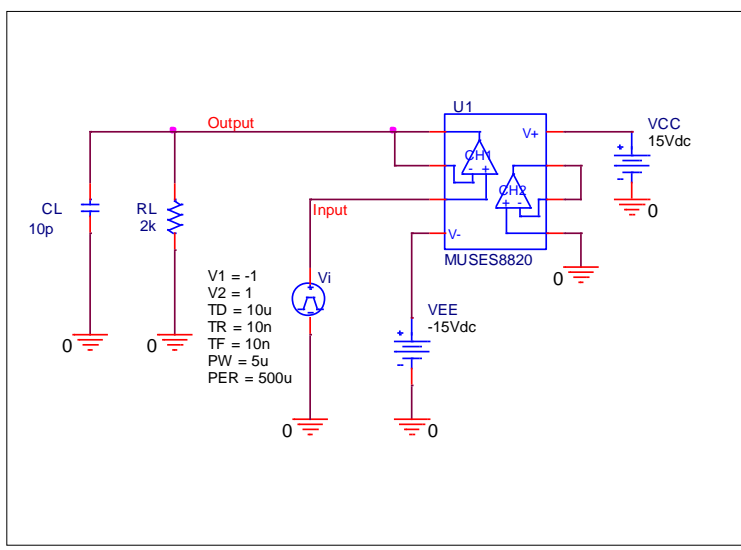
Parameter	Measurement	Simulation	%Error
<b>Iio (nA)</b>	<b>5.000</b>	<b>5.003</b>	<b>0.05</b>
<b>Ib (nA)</b>	<b>100.000</b>	<b>100.012</b>	<b>0.01</b>

# Slew Rate

## Simulation result



## Evaluation circuit

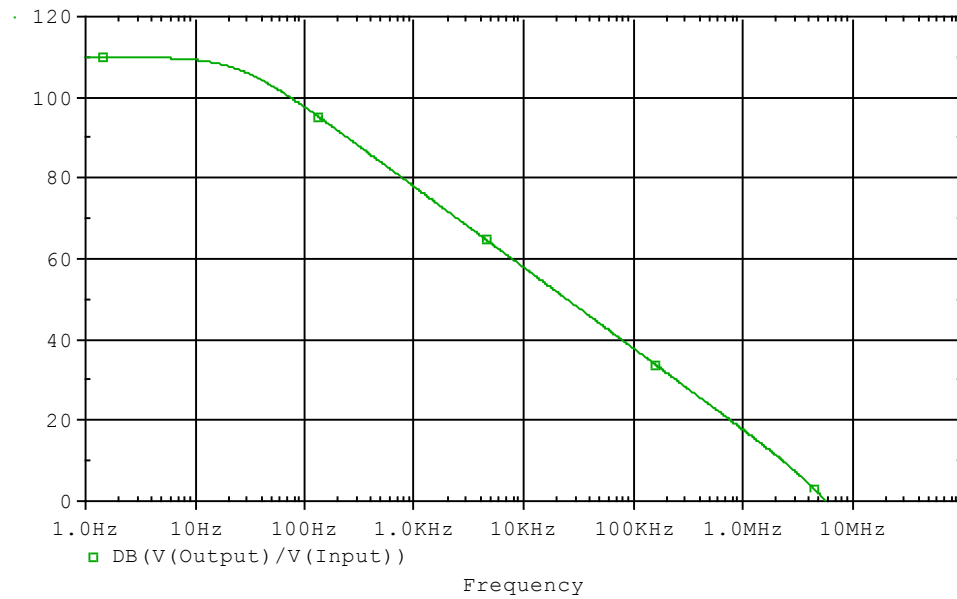


## Comparison table

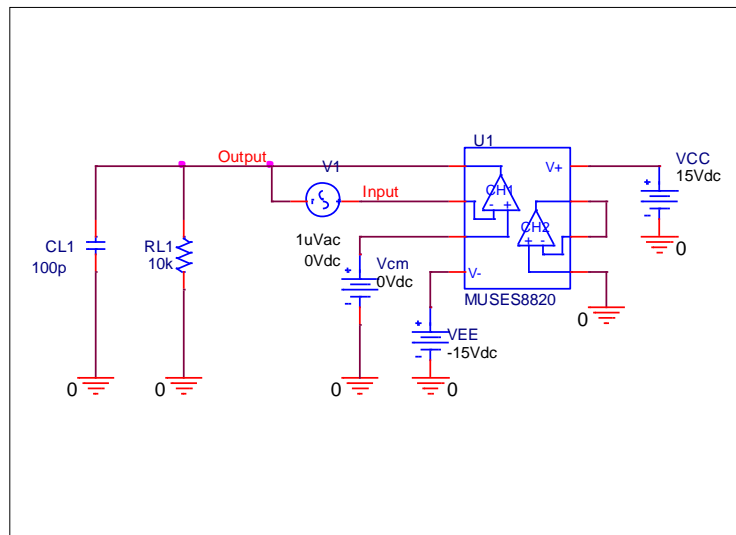
Parameter	Measurement	Simulation	%Error
Slew Rate (V/us)	5.000	4.925	-1.50

# Open loop voltage gain

## Simulation result



## Evaluation circuit



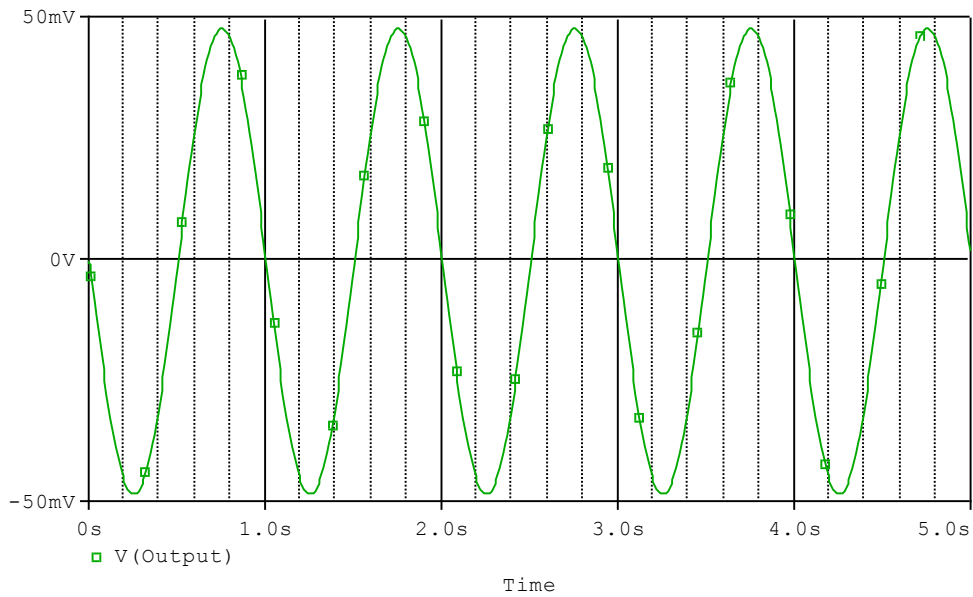
## Comparison table

Parameter	Measurement	Simulation	%Error
AV (db)	110.000	109.914	-0.08

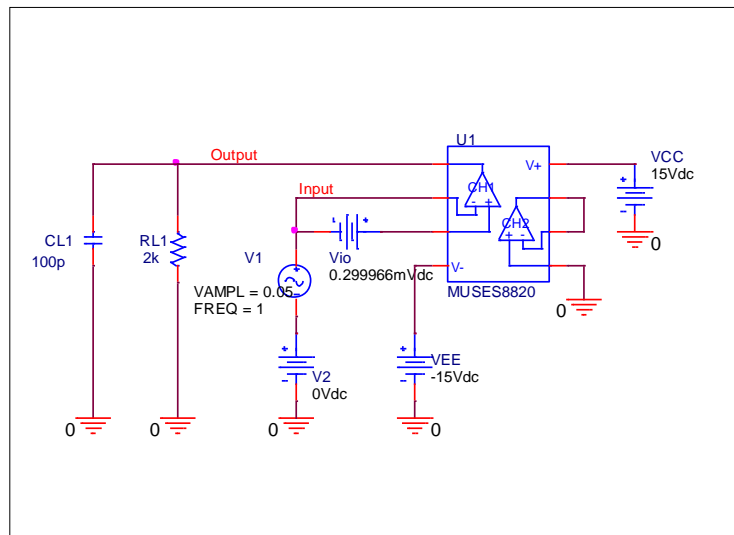


# Common-mode rejection voltage gain

## Simulation result



## Evaluation circuit



## Comparison table

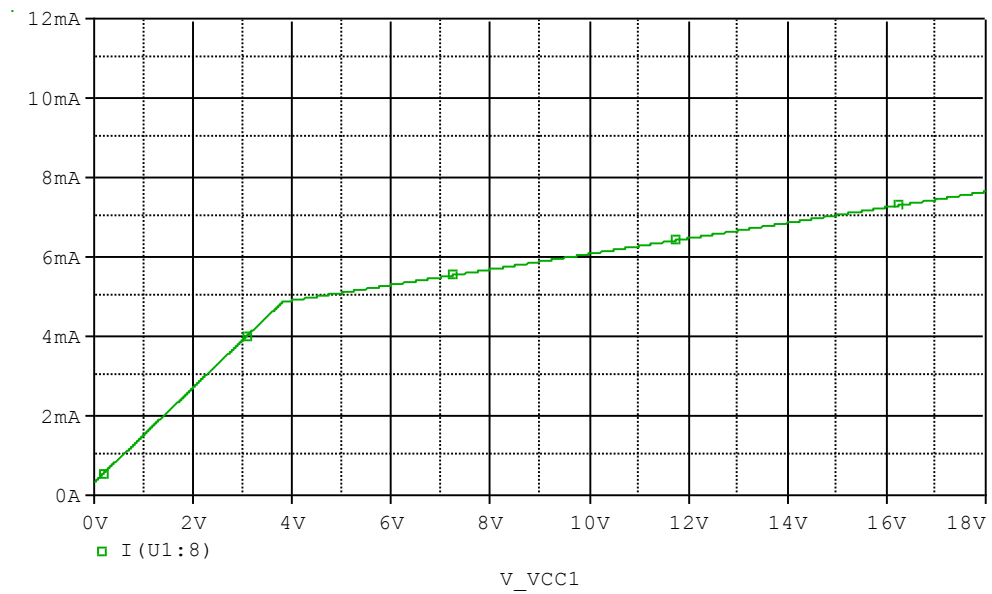
Common mode gain = 0.961 V/V

CMRR =  $20 \cdot \log_{10}(316627/0.961) = 110.356$

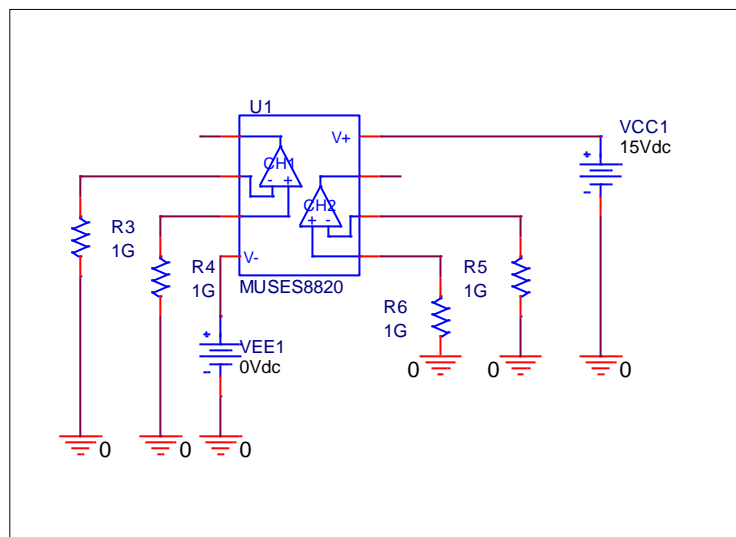
Parameter	Measurement	Simulation	%Error
<b>CMRR(dB)</b>	<b>110.000</b>	<b>110.356</b>	<b>0.32</b>

# Supply Current

## Simulation result



## Evaluation circuit

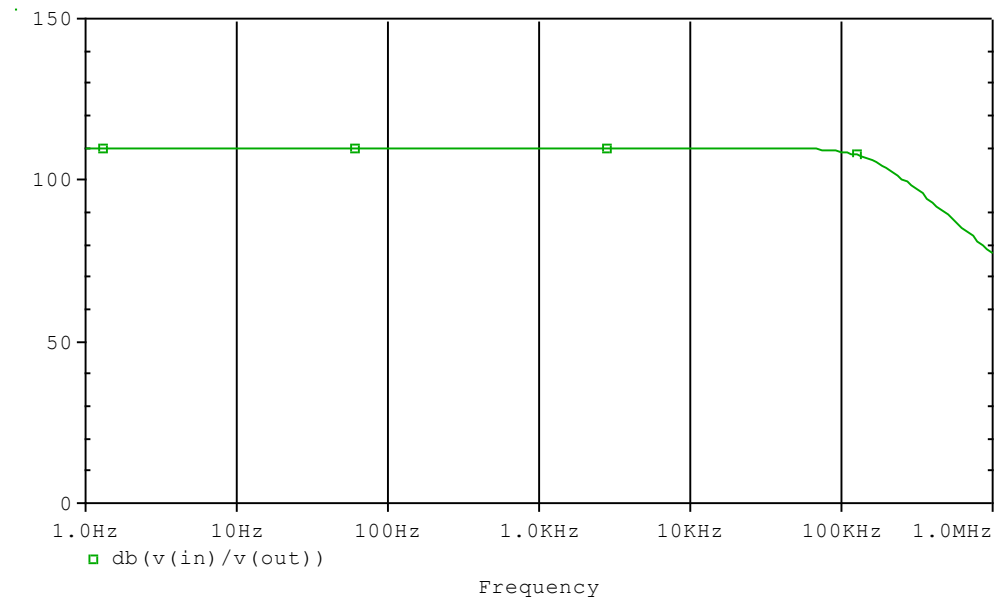


## Comparison table

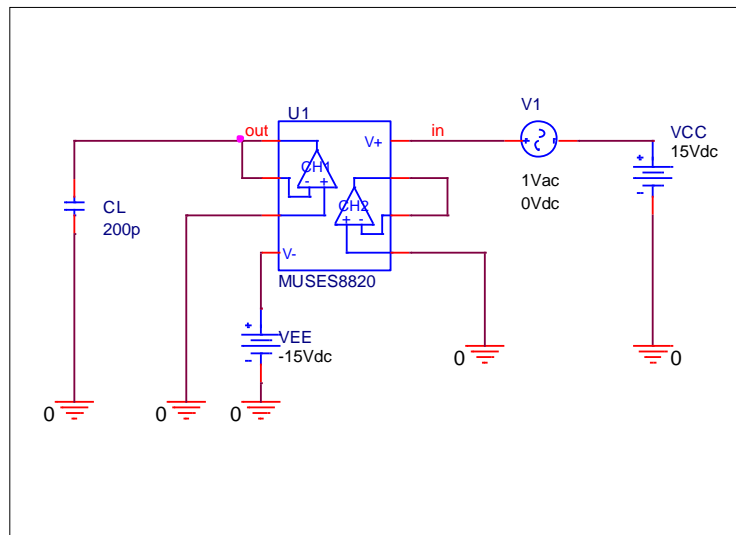
Parameter	Measurement	Simulation	%Error
ICC (mA)	7.600	7.641	0.54

# Power supply rejection ration

## Simulation result



## Evaluation circuit

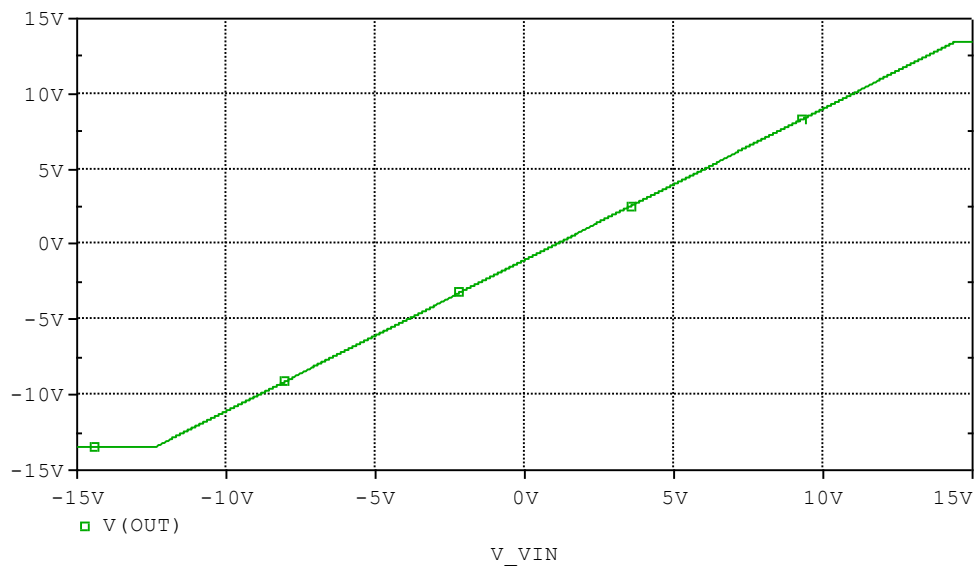


## Comparison table

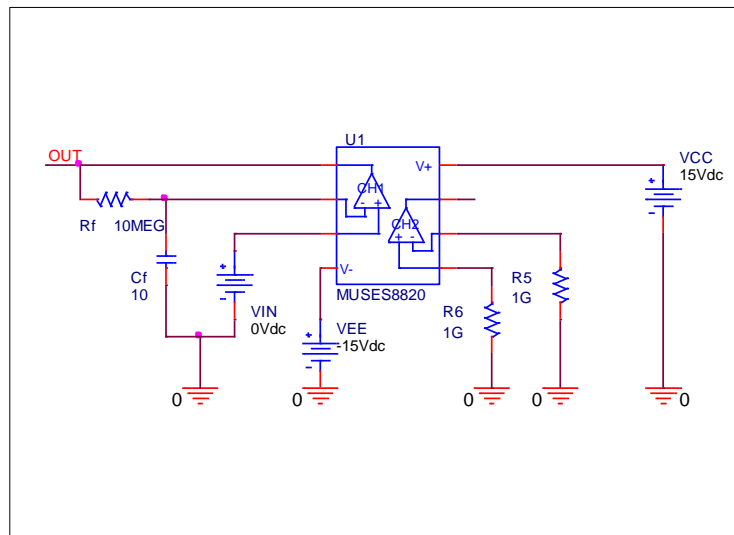
Parameter	Measurement	Simulation	%Error
PSRR (dB)	110.000	109.992	-0.01

## Input common-mode voltage range

### Simulation result



### Evaluation circuit

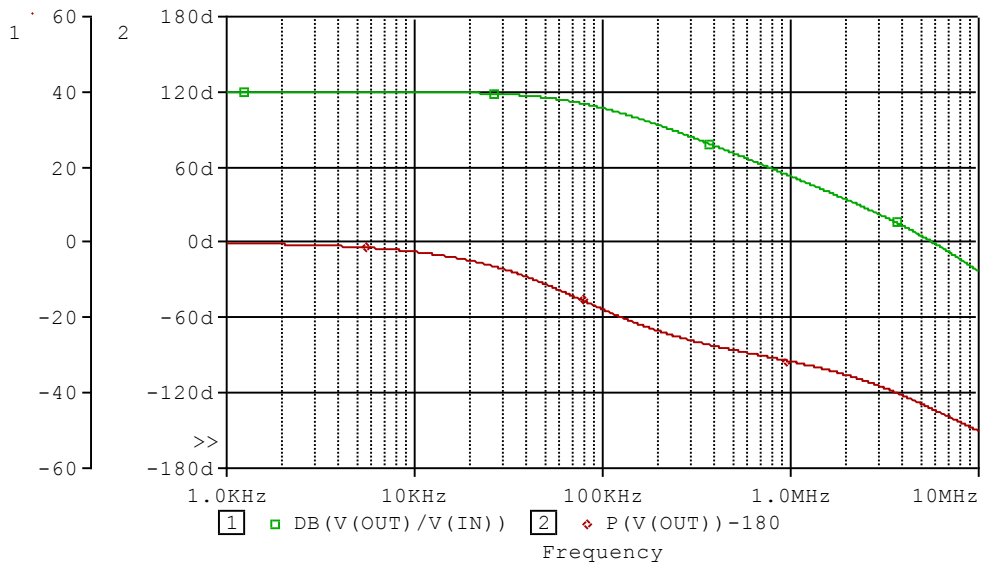


### Comparison table

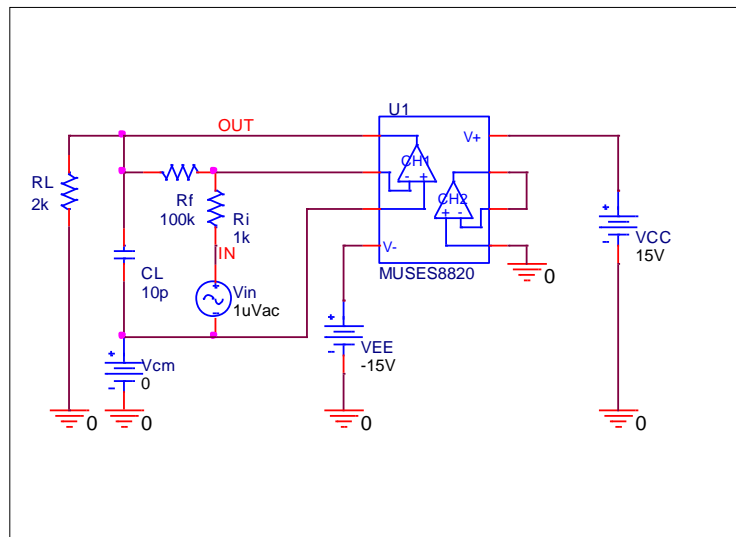
Parameter	Measurement	Simulation	%Error
Vicm (V)	27.000	27.153	0.57

# Gain Bandwidth Product

## Simulation result



## Evaluation circuit



## Comparison table

VCC=15[V], VEE=-15[V], Av=40[dB]

Parameter	Measurement	Simulation	%Error
Ft (MHz)	5.800	5.711	-1.54
Phase margin $\theta$ (°)	48.000	46.969	-2.15