

Device Modeling Report

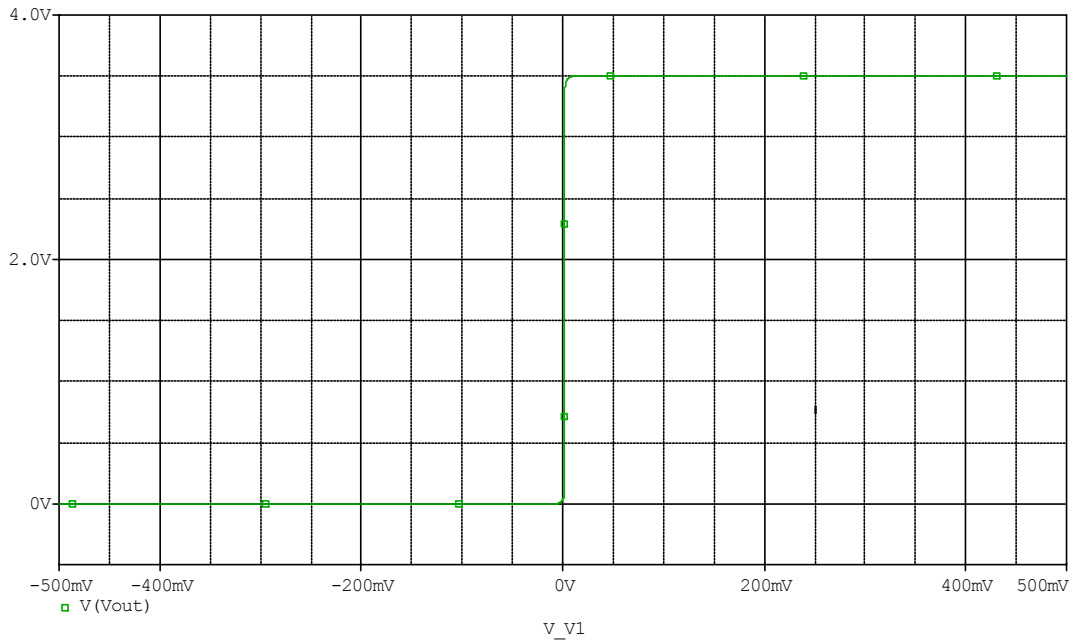
COMPONENTS:MOSFET: OPERATIONAL AMPLIFIER
PART NUMBER: TA75358P
MANUFACTURER: TOSHIBA



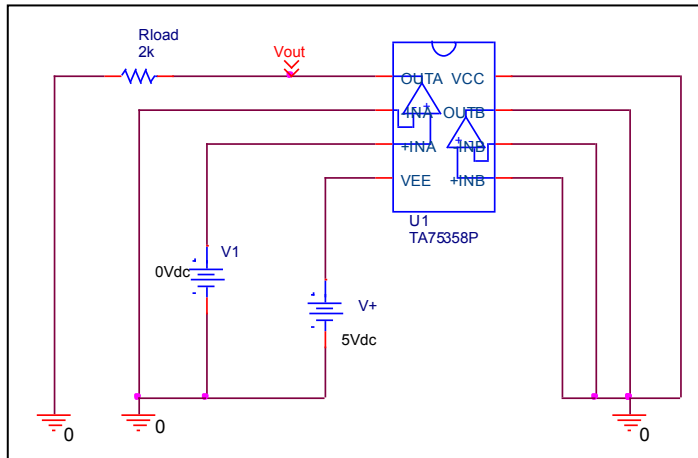
Bee Technologies Inc.

Output Voltage Swing

Simulation result



Evaluation circuit



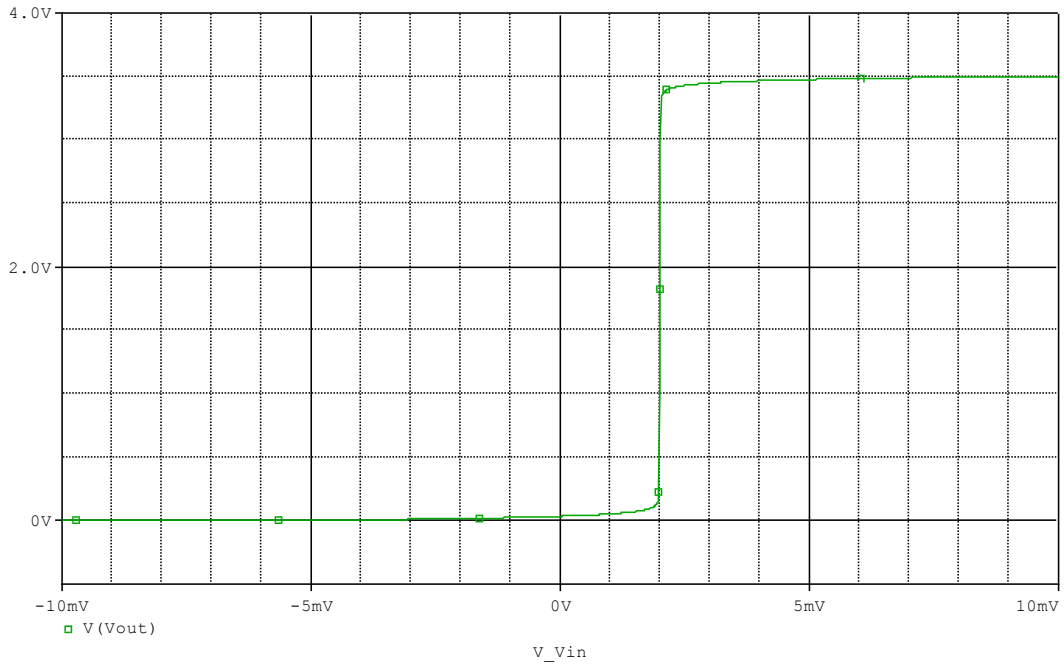
Comparison table

* $V_{out} = V_{cc} - 0.5$

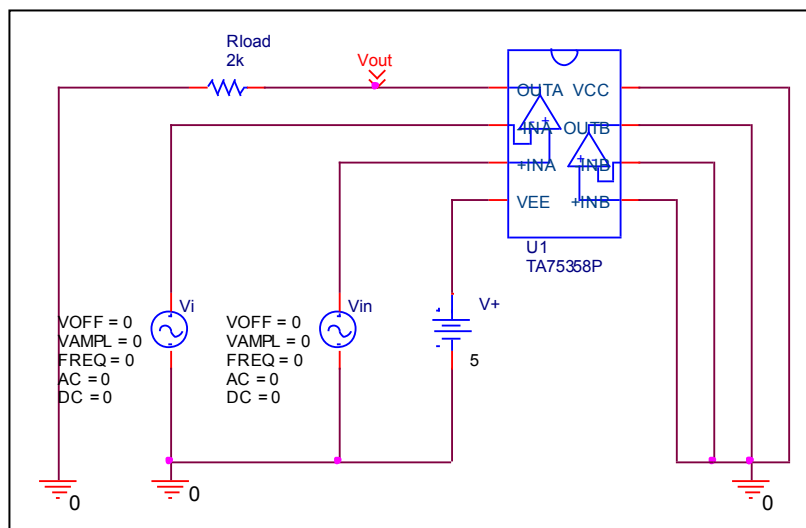
Output Voltage Swing	Measurement	Simulation	%Error
$V_{out}(V)$	3.500	3.500	-0.029

Input Offset Voltage

Simulation result



Evaluation circuit

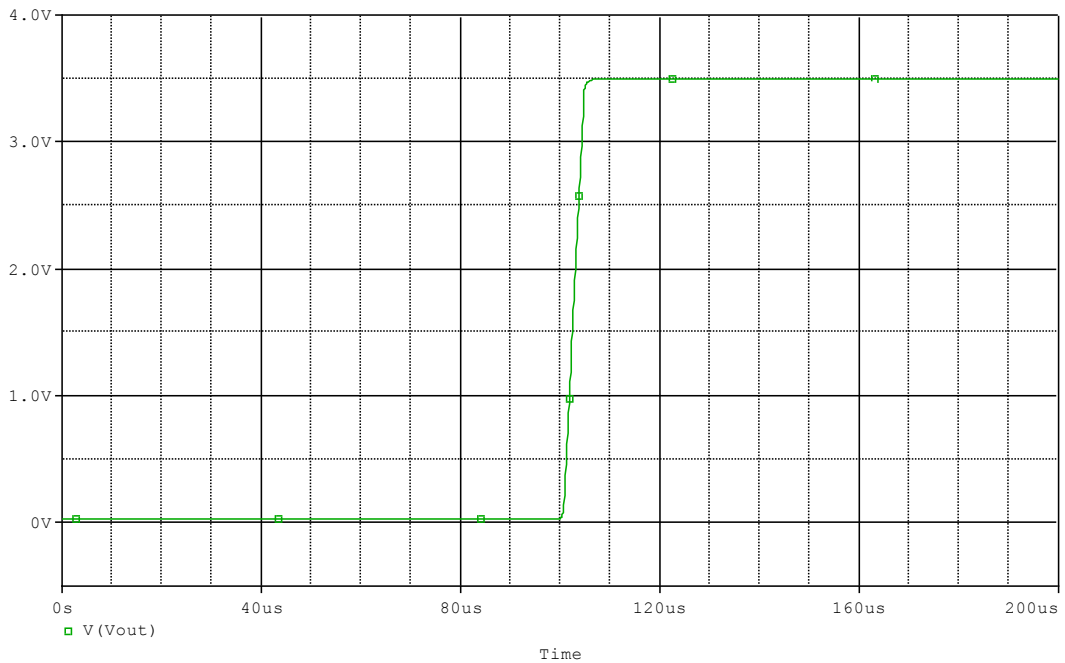


Comparison table

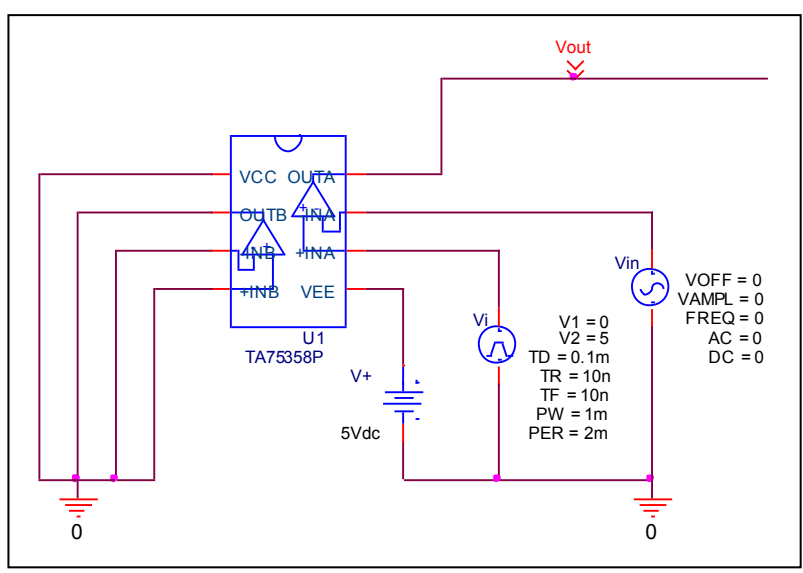
Vos(mV)	Measurement	Simulation	%Error
		2.000	1.985

Slew Rate

Simulation result



Evaluation circuit

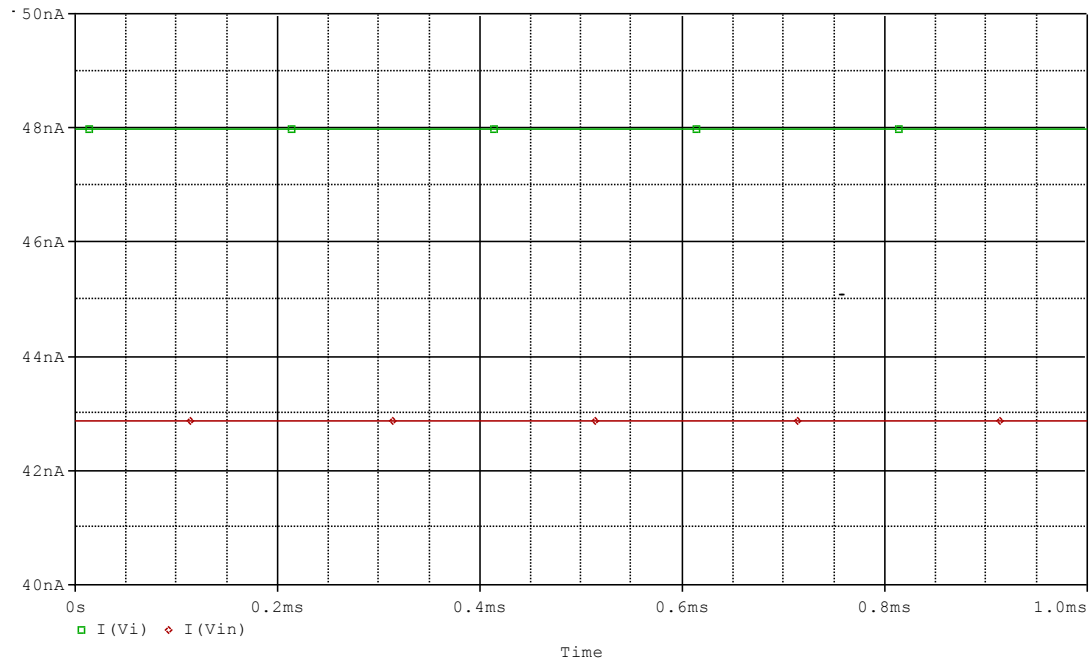


Comparison table

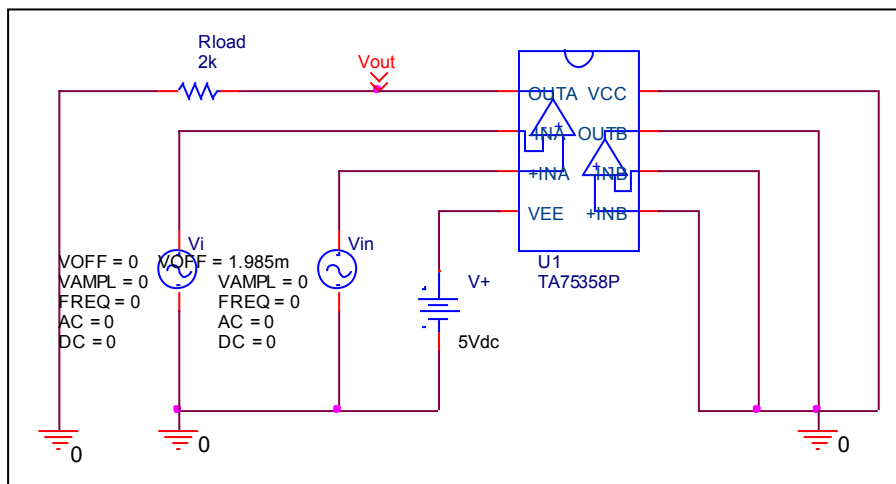
Slew Rate(v/us)	Measurement	Simulation	%Error
		0.800	0.810

Input current Ib, Ibos

Simulation result



Evaluation circuit

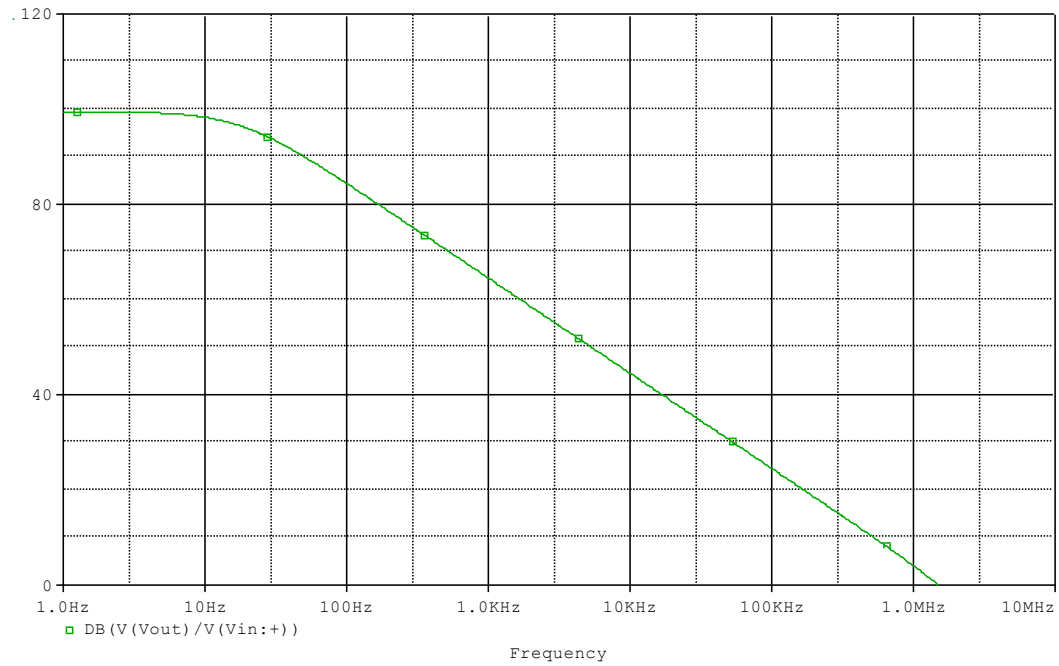


Comparison table

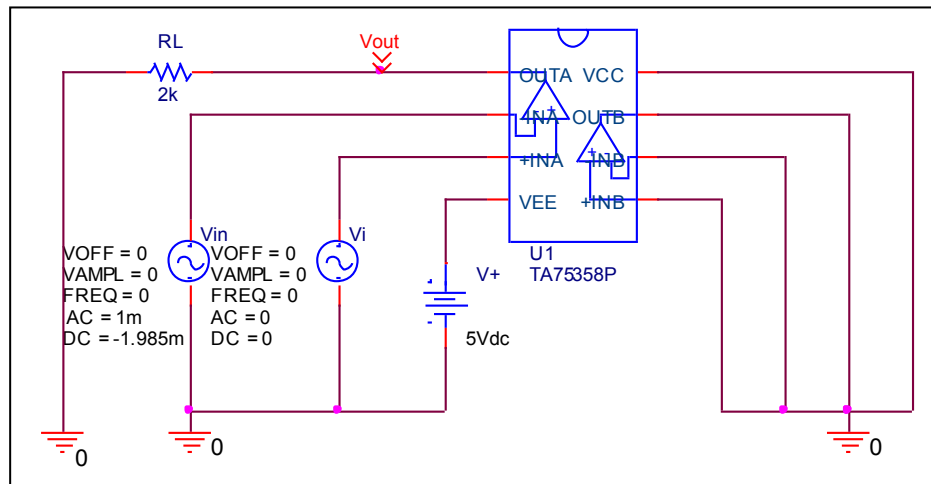
	Measurement	Simulation	%Error
Ib(nA)	45.000	45.420	0.933
Ibos(nA)	5.000	5.091	1.828

Open Loop Voltage Gain vs. Frequency , Av-dc, f-0dB

Simulation result



Evaluation circuit

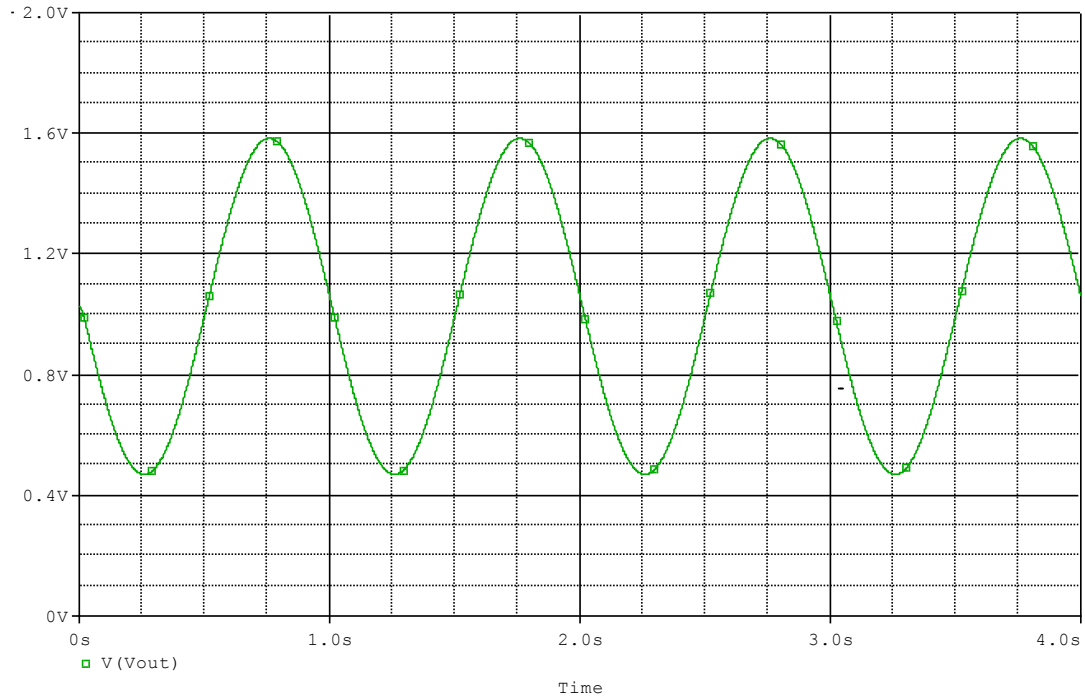


Comparison table

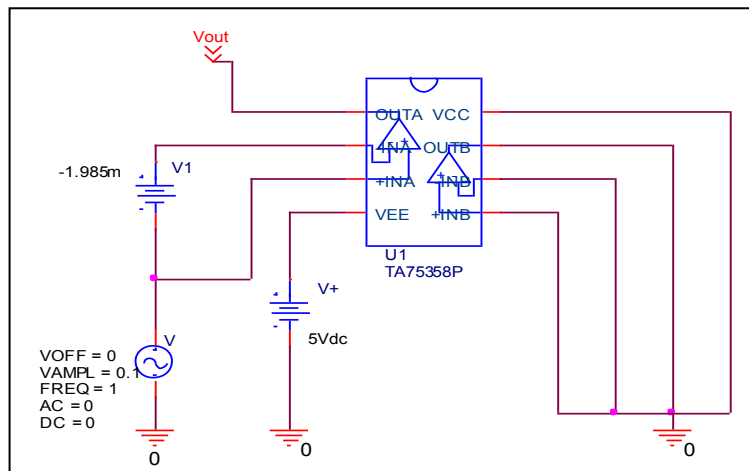
	Measurement	Simulation	%Error
f-0dB(MHz)	1.500	1.501	0.047
Av-dc(dB)	100.000	99.477	-0.523

Common-Mode Rejection Voltage gain

Simulation result



Evaluation circuit



Common Mode Reject Ratio = $199,434 / 1.9837 = 100,536$

CMRR (dB)	Measurement	Simulation	%Error
		85.000	84.562