

# Device Modeling Report

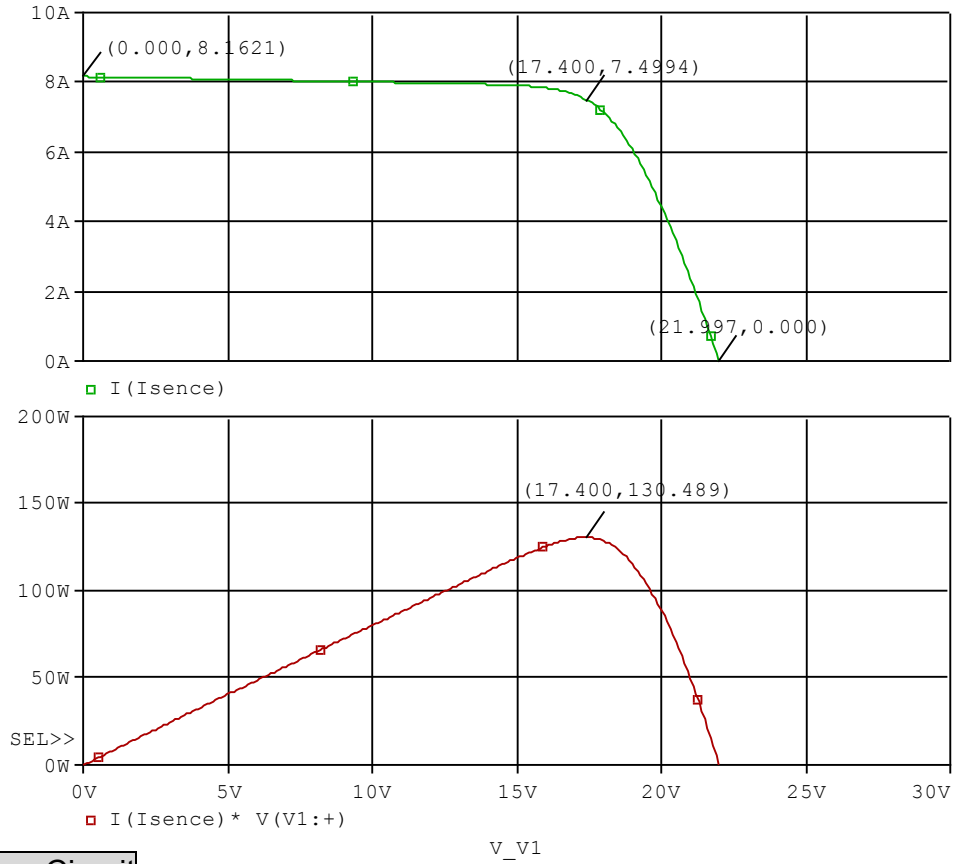
COMPONENTS: Solar Cell  
PART NUMBER: BP 3130  
MANUFACTURER: bp Solar  
REMARK: Rated power (Pmax) 130W



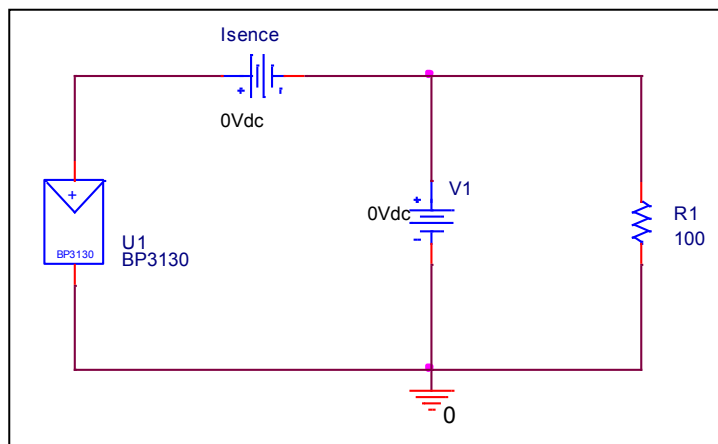
**Bee Technologies Inc.**

# Output Characteristic

## Circuit Simulation Result



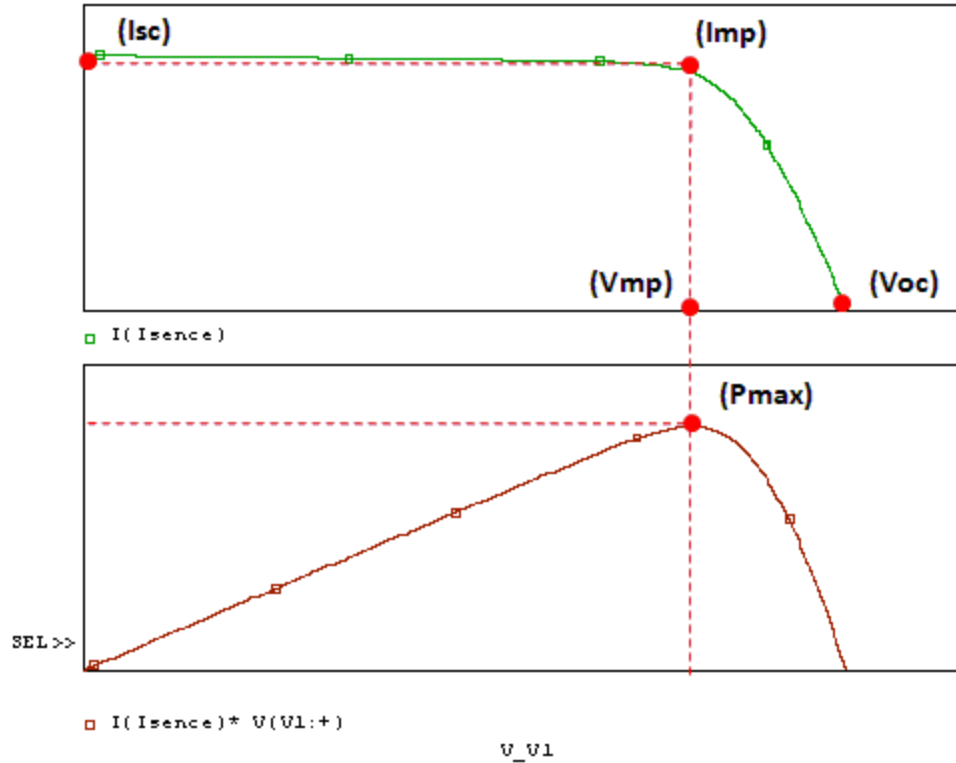
## Simulation Circuit



# Output Characteristic

# Reference

## Circuit Simulation Result



## Data Table

Symbol	Measurement	Simulation	%Error
Isc	8.2000	8.1631	-0.450
Voc	22.0000	21.9970	-0.014
Imp	7.5000	7.4994	-0.008
Vmp	17.4000	17.4000	0.000
Pmax(Imp*Vmp)	130.5000	130.4890	-0.008

## Data Information

---

<b>No. BP 3130</b>	
<b>Maximum power (Pmax)<sup>3</sup></b>	<b>130W</b>
<b>Voltage at Pmax (Vmp)</b>	<b>17.4V</b>
<b>Current at Pmax (Imp)</b>	<b>7.5A</b>
<b>Short-circuit current (Isc)</b>	<b>8.2A</b>
<b>Open-circuit voltage (Voc)</b>	<b>22.0V</b>