

Device Modeling Report

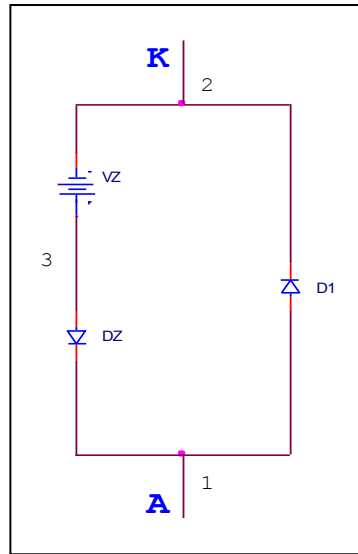
COMPONENTS: DIODE/ZENER DIODE/ STANDARD
PART NUMBER: 02DZ5.6_X
MANUFACTURER: TOSHIBA



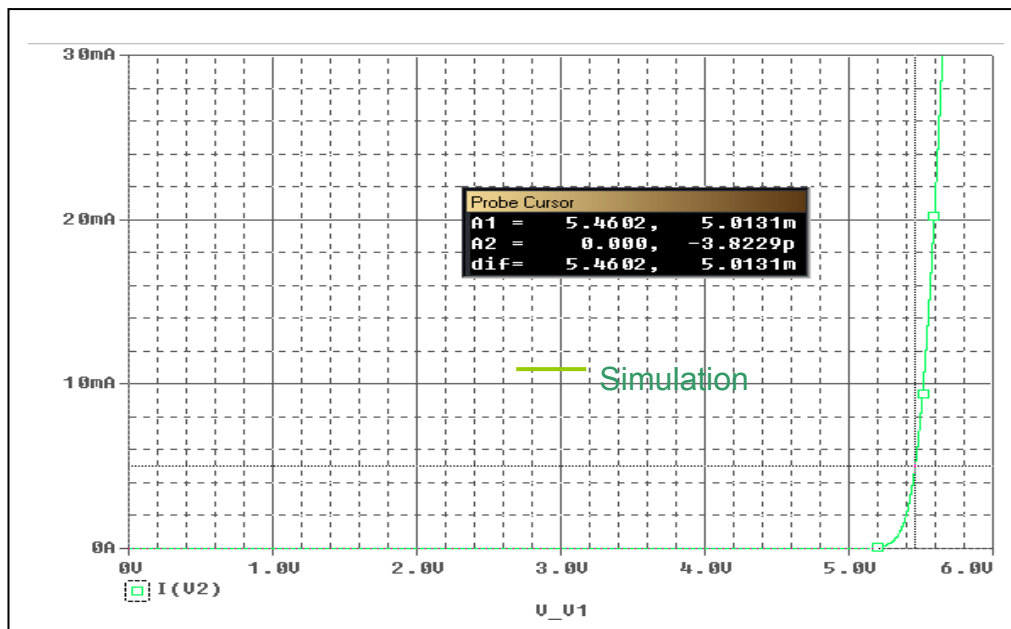
Bee Technologies Inc.

Pspice model parameter	Model description
IS	Saturation Current
N	Emission Coefficient
RS	Series Resistance
CJO	Zero-bias Junction Capacitance
M	Junction Grading Coefficient
VJ	Junction Potential
ISR	Recombination Current Saturation Value
TT	Transit Time

Equivalent circuit



Iz(Zener Current) vs. Vz(Zener Voltage) Characteristics



Simulation Result

	Datasheet	Simulation	% Error
VZ(V)	5.30-5.63	5.4602	0
IZ(A)	5m	5.0131m	0.262