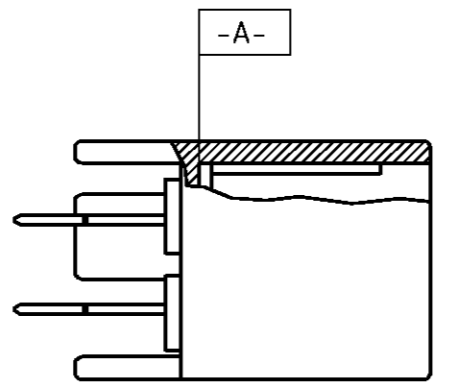
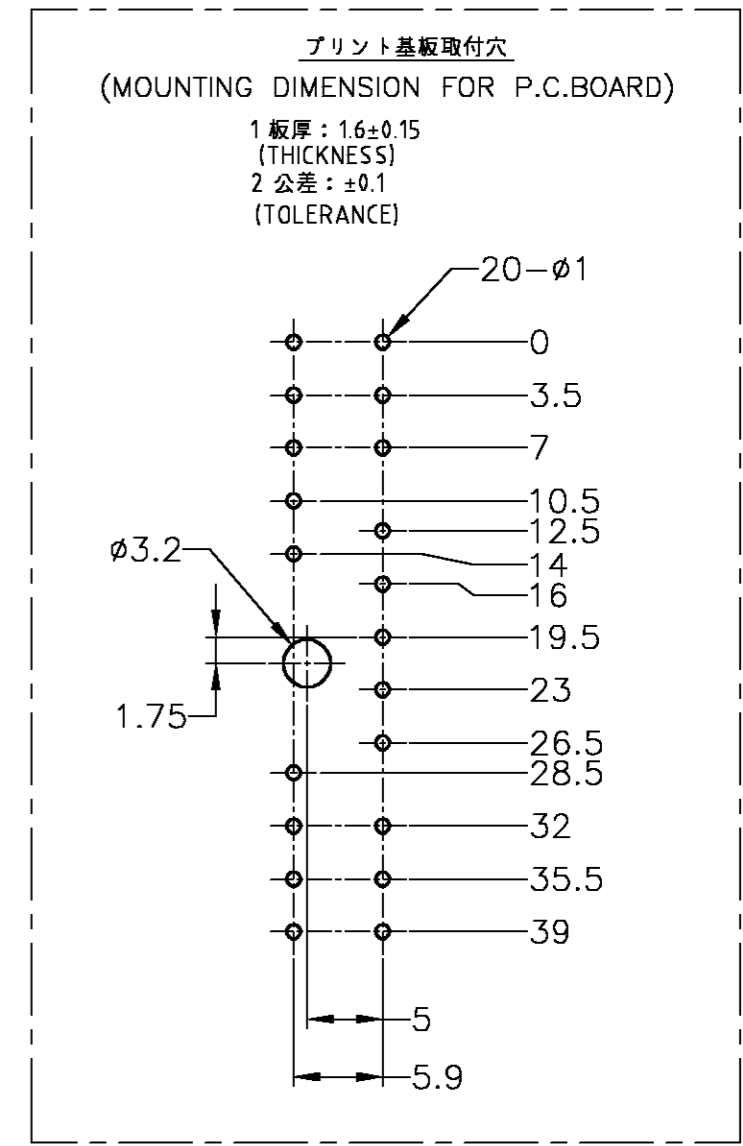
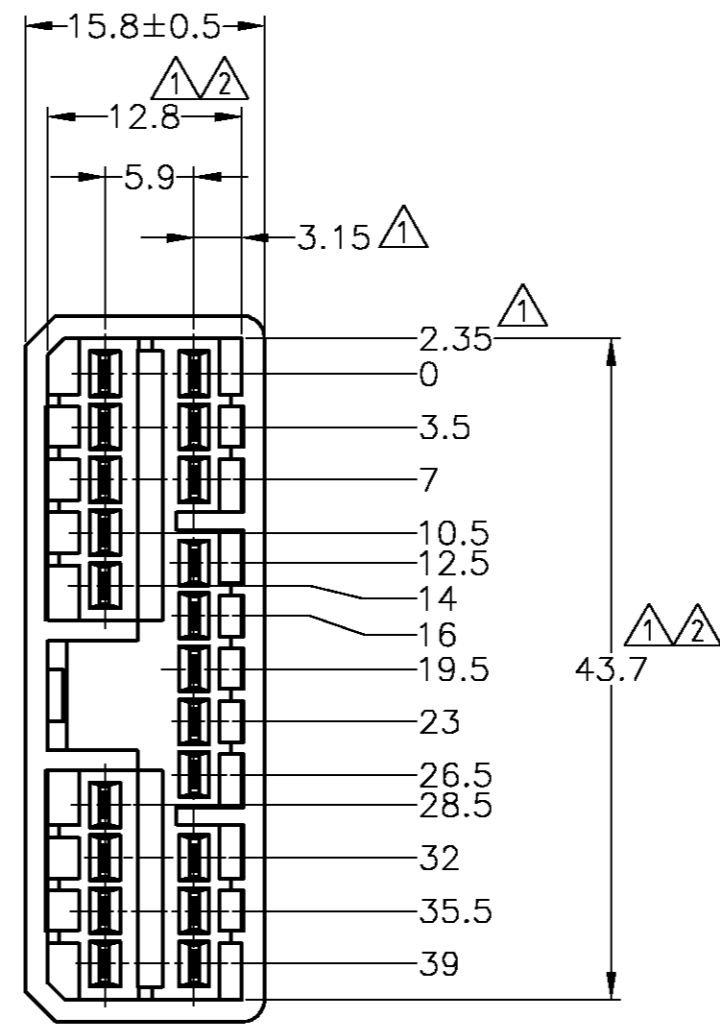
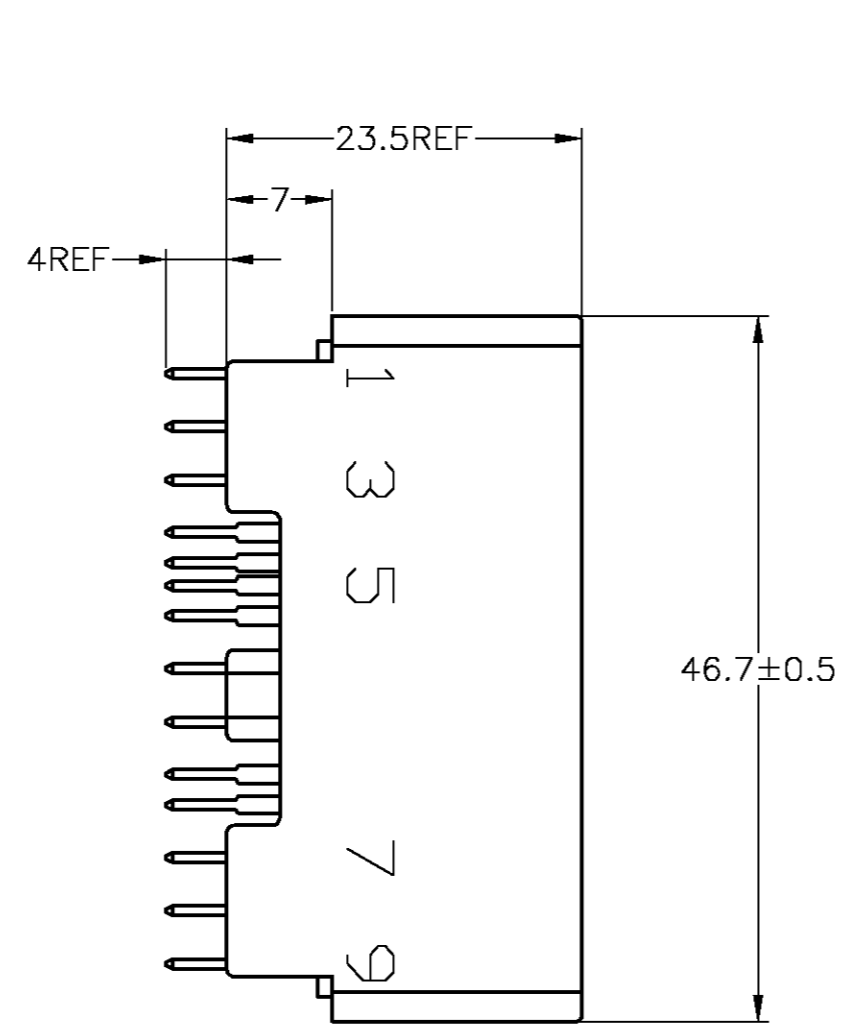
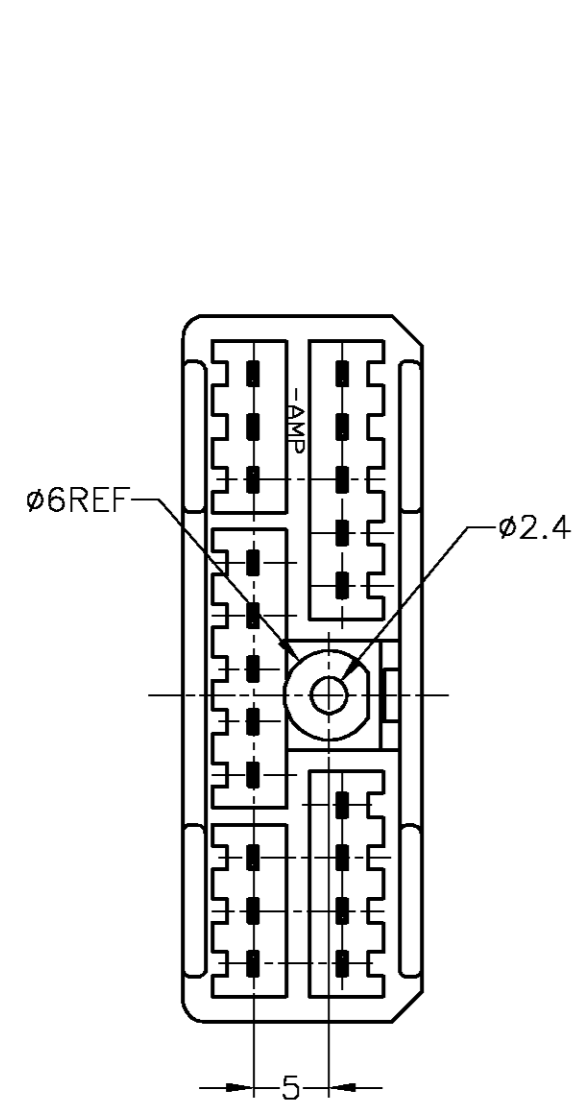


THIS DRAWING IS UNPUBLISHED. RELEASED FOR PUBLICATION
 © COPYRIGHT BY TYCO ELECTRONICS CORPORATION. ALL RIGHTS RESERVED.

LOC	DIST	REVISIONS					
J	-	P	LTR	DESCRIPTION	DATE	DWN	APVD
		E1		OBSOLETE 3--1	ECR-07-015039	27JUN07	TS KB



- △-A- 面より2mmの範囲で測定。
- △相手ハウジングと所定の機能を満たして嵌合できること。
- 3. プリント基板への取付けは、JIS B1115又は1122, M3×6ナベ (2種又は4種)のタッピンネジで締付けた後ハンダ付けする。
- 4. 嵌合相手ハウジング型番：174952
- △ TO BE MEASURED BETWEEN [-A-] AND 2.
- △ TO BE MATED WITH PLUG HSG SMOOTHLY.
- 3. TO BE USE M3 TAPPING SCREW JIS B1115 OR 1122 (TYPE2 OR 4) BEFORE SOLDER.
- 4. APPLIDE PLUG HOUSING PART NUMBER: 174952

OBsolete	SELECTIVE-TIN	PRE-TIN	WHITE	3-174960-1
	TIN-LEAD	SELECTIVE-GOLD	WHITE	2-174960-1
		PRE-TIN	YELLOW	1-174960-7
		PRE-TIN	GRAY	1-174960-6
		PRE-TIN	WHITE	1-174960-1
	SOLDERING SIDE 半田付け部	CONTACT SIDE 接触部側	COLOR 色	PART NUMBER 製品型番
	CONTACT FINISH コンタクト仕上			

TOLERANCE UNLESS OTHERWISE SPECIFIED: 一般公差

0 < x ≤ 10 : ±0.2
 10 < x ≤ 30 : ±0.25
 30 < x ≤ 100 : ±0.3
 ANGLE : ±3°

THIS DRAWING IS A CONTROLLED DOCUMENT.

DWN: T.SHINOHARA 26JUN07
 CHK: K.BETSUI 26JUN07
 APVD: K.BETSUI 26JUN07

Tyco Electronics Corporation
 Kawasaki, Japan

PRODUCT SPEC: 108-5216
 APPLICATION SPEC: 412-5520

WEIGHT: 10.6 g

SIZE: A2 CAGE CODE: 00779 DRAWING NO: 174960

CUSTOMER DRAWING SCALE: 2:1 SHEET: 1 of 1 REV: E1