

# 8HD

## Lever & Rocker Switches

Dust Proof

RoHS Compliant

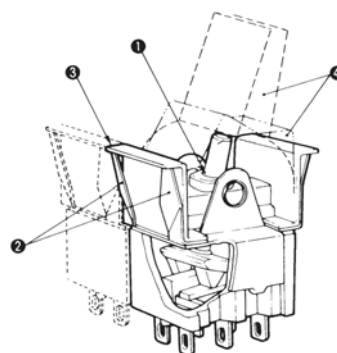


UL CSA

### Features

The **8HD** Lever & Rocker switch is a dustproof version of the **8H** type and is best suited for use in the adverse environment where a lot of dust exists. The lever, rocker, and mounting frame are available in four matted colors. Choose the suitable one for the panel design.

- 1 Dustproof structure.
- 2 Snap-in mounting on panel.  
(The hole layout is same as the **8H** type.)
- 3 The side-by-side mounting will not cause gap between switches.
- 4 Colorful mat-finished levers and rockers that enhance the panel design can be mounted.

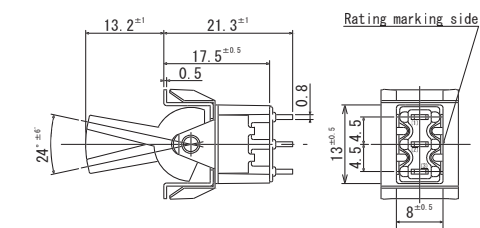
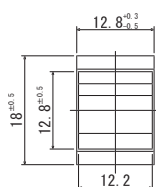


### SPDT

Dust Proof



Mount with **Lever**



Terminal numbers are not shown on the bottom of the switch.

Switching function	Viewed from rating marking side		
Part No.			
8HD101■—Z	ON	—	ON
8HD102■—Z	ON	OFF	ON
8HD104■—Z	(ON)	OFF	(ON)
8HD105■—Z	ON	OFF	(ON)
8HD106■—Z	ON	—	(ON)
Connecting terminals	2—3	—	2—1

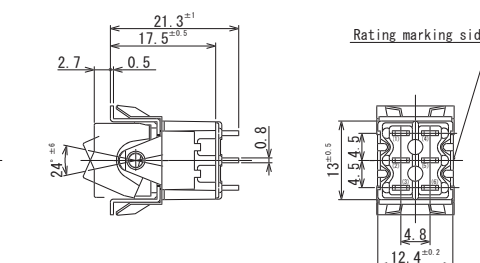
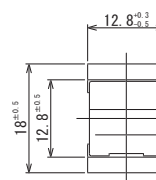
■ : Look at follows.

### DPDT

Dust Proof



Mount with **Rocker**



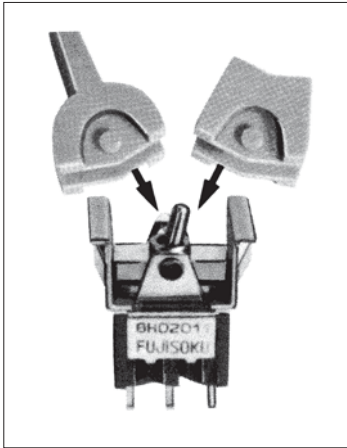
Terminal numbers are not shown on the bottom of the switch.

Switching function	Viewed from rating marking side		
Part No.			
8HD201■—Z	ON	—	ON
8HD202■—Z	ON	OFF	ON
8HD204■—Z	(ON)	OFF	(ON)
8HD205■—Z	ON	OFF	(ON)
8HD206■—Z	ON	—	(ON)
Connecting terminals	2—3 5—6	—	2—1 5—4

■ : Look at follows.

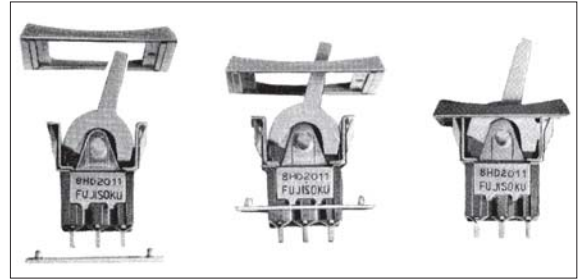
(ON) : Momentary.

## ■ Lever・Rocker Installation Procedure



## ■ Mounting Frame mounting Method

● Install the mounting frame as shown in the photo below.



● To mount the switch on the panel, press in the switch from the panel side with uniform pressure on the right and left.

## ■ Table of Part Numbers

Terminal style	Switching function	1—pole	2—pole
Solder Terminal	ON — ON	☆ 8HD1011—Z ▲ 8HD1011C—Z	☆ 8HD2011—Z ▲ 8HD2011C—Z
	ON — OFF — ON	★ 8HD1021—Z ▲ 8HD1021C—Z	☆ 8HD2021—Z ▲ 8HD2021C—Z
	(ON) — OFF — (ON)	★ 8HD1041—Z	★ 8HD2041—Z
	ON — OFF — (ON)	★ 8HD1051—Z	★ 8HD2051—Z
	ON — (ON)	★ 8HD1061—Z	★ 8HD2061—Z
PC Straight	ON — ON	★ 8HD1012—Z	★ 8HD2012—Z
	ON — OFF — ON	★ 8HD1022—Z	★ 8HD2022—Z
	(ON) — OFF — (ON)	★ 8HD1042—Z	★ 8HD2042—Z
	ON — OFF — (ON)	▲ 8HD1052—Z	▲ 8HD2052—Z
	ON — (ON)	★ 8HD1062—Z	★ 8HD2062—Z

Some products in the Table of UL and CSA-Approved Products are not registered yet. Before placing the order, check with our Sales Department.

## ■ Accessories

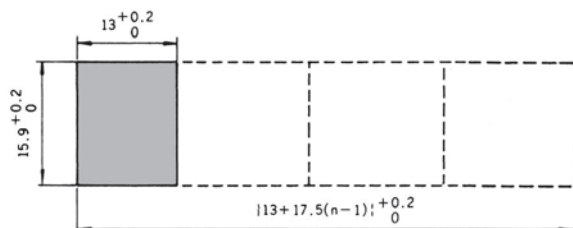
《Supplied separately》

Part Name	Standard Accessories		Optional Accessories
	Lever	Rocker	Mounting Frame
Dimensions			
White	140000050558	140000480594	140000340127 + 140000600181
Red	140000050559	140000480595	140000340128 + 140000600181
Black	140000050560	140000480596	140000340129 + 140000600181
Gray	140000050561	140000480597	140000340130 + 140000600181

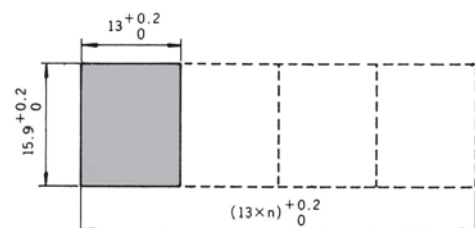
○ Specify either one of Lever or Rocker in part number when placing an order.

## ■ Panel Cut-Out Dimensions

Panel thickness (with **Mounting Frame**) : 1 to 2.5mm



Panel thickness (with **Mounting Frame**) : 1 to 3mm



★ : Made to order products. ● For Soldering Specifications and Flux Cleaning, see page 349.

□ : Optional Accessories. (ON) : Momentary.  
☆ : Semi-standard products. ▲ : Inquiry products.