

**PLEASE CHECK WWW.MOLEX.COM FOR LATEST PART INFORMATION**

**Part Number:** [171692-0102](#)  
**Status:** **Active**  
**Overview:** [Mega-Fit Power Connectors](#)  
**Description:** Mega-Fit™ Receptacle Housing, Dual Row, 2 Circuit, UL 94 V-0, Bag

**Documents:**

|  |  |
|--|--|
| <a href="#">3D Model</a>                                 | <a href="#">Test Summary TS-170001-001 (PDF)</a>     |
| <a href="#">Drawing (PDF)</a>                            | <a href="#">Test Summary TS-76823-100 (PDF)</a>      |
| <a href="#">Product Specification PS-76823-100 (PDF)</a> | <a href="#">RoHS Certificate of Compliance (PDF)</a> |

**Agency Certification**

|     |         |
|-----|---------|
| CSA | LR19980 |
| UL  | E29179  |

**General**

|                |   |
|----------------|---|
| Product Family | Crimp Housings                            |
| Series         | <a href="#">171692</a>                    |
| Application    | Power, Wire-to-Board, Wire-to-Wire        |
| Overview       | <a href="#">Mega-Fit Power Connectors</a> |
| Product Name   | Mega-Fit™                                 |
| UPC            | 887191246840                              |

**Physical**

|                               |                 |
|-------------------------------|-----------------|
| Circuits (maximum)            | 2               |
| Circuits Detail               | 2               |
| Color - Resin                 | Black           |
| Flammability                  | 94V-0           |
| Gender                        | Male            |
| Glow-Wire Compliant           | No              |
| Lock to Mating Part           | Yes             |
| Material - Resin              | PBT             |
| Net Weight                    | 1.530/g         |
| Number of Rows                | 2               |
| Packaging Type                | Bag             |
| Panel Mount                   | No              |
| Pitch - Mating Interface      | 5.70mm          |
| Pitch - Termination Interface | 5.70mm          |
| Polarized to Mating Part      | Yes             |
| Temperature Range - Operating | -40°C to +105°C |

**Electrical**

|                               |     |
|-------------------------------|-----|
| Current - Maximum per Contact | 23A |
|-------------------------------|-----|

**Material Info**

**Reference - Drawing Numbers**

|                       |                             |
|-----------------------|-----------------------------|
| Product Specification | PS-76823-100                |
| Sales Drawing         | SD-171692-0100              |
| Test Summary          | TS-170001-001, TS-76823-100 |

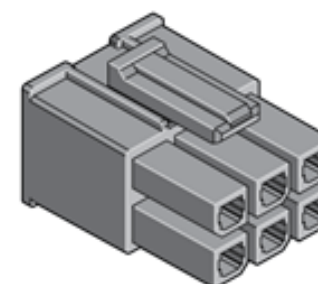


image - Reference only

Series

**EU RoHS**

**ELV and RoHS Compliant**  
**REACH SVHC Contains SVHC: No**  
**Low-Halogen Status**  
**Not Low-Halogen**

**China RoHS**



**Need more information on product environmental compliance?**

Email [productcompliance@molex.com](mailto:productcompliance@molex.com)  
 For a multiple part number RoHS Certificate of Compliance, [click here](#)

Please visit the [Contact Us](#) section for any non-product compliance questions.

**Search Parts in this Series**

[171692Series](#)

**Mates With**

Mega-Fit™ Header [76825](#) , [76829](#) , [172064](#) , [172065](#)

**Use With**

Mega-Fit™ Crimp Terminals, [172063](#)