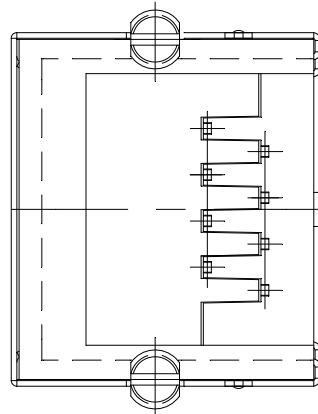


PCB LAYOUT/TOP VIEW



MATERIALS:

PLASTIC HOUSING: ENGINEERING THERMOPLASTIC
 FLAMMABILITY RATING UL 94V-0.
 COLOUR: BLACK.

PLASTIC INSERT: ENGINEERING THERMOPLASTIC
 FLAMMABILITY RATING UL 94V-0.
 COLOUR: GRAY(PANTONE No. COOL GRAY 5U).

CONTACTS: PHOSPHOR BRONZE

PLATING: GOLD PLATING OVER NICKEL IN CONTACT.

MATTED TIN PLATING OVER NICKEL IN SOLDER AREA.

SHIELD: BRASS PLATING NICKEL ALLOY.

- P/N 3u" : 3008715501
- 6u" : 3008715601
- 15u" : 3008715701
- 30u" : 3008715801
- 50u" : 3008715901

RoHS COMPLIANT

| | | | |
|---|---------------------------------|---|---|
| 設計 DR. Kathy Chung 2013/07/25 | 核准 APPD. Marco 2013/07/25 | 容許公差 TOLERANCE .XXX ±0.10 .XX ±0.25 .X ±0.38 X ±0.50 ANG ±3° | 品名 ARTICLE SIDE ENTRY PCB JACK(8P8C) |
| 版本說明 REVISION NOTE 依E302-1307045新增3008715701規格,發D版 | | | 圖號 DWG NO. 3008715501 |
| | | | 單位 UNIT 比例 SCALE 張數 SHEET 版本 REV. mm 1/3 1/1 D |