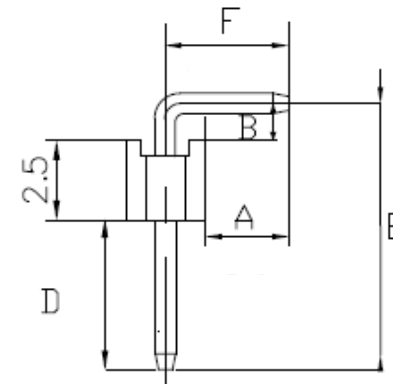


NOTE: 2~40 POSITION



Specifications:
 Insulator Material: PBT & 30% Glass Fiber(UL 94V-0)
 Contact Resistance: 30m ohms Max at DC 100mA
 Insulator Resistance: 1000M ohms Min at DC 500 V
 Current Rating: 3 Amps
 Dielectric Withstanding Voltage: AC 500V For 1 minute
 Temperature Rating: -40°C ~ + 85°C
 Contact Material: Phosphor Brass
 RoHS

Order Information

PART NO. 213A-xxRE-xx
 213A TYPE PIN TYPE
 No of Contacts 2~40 01: (A=3.73,B=3.32,D=7.0)
 RoHS 02: (A=3.00,B=1.50,D=6.0)
 03: (A=7.70,B=2.50,D=7.2)
 04: (A=1.50,B=1.00,D=9.4,E=12.9)
 05: (A=1.50,B=1.50,D=5.0)
 06: (A=3.73,B=3.32,D=9.0)

213A-20RE-02/-03					
PROJ	SCALE : F		TITLE		
	DO NOT SCALE DWG		P/H 1*N 2.54mm 90D RoHS		
GENERAL TOLERANCE ± 0.20	APP	JAMES	13-10-15	DWG NO.213A-102	REV. X6
	CHK	SHIRLEY	01-03-12		
	DRW	HUANG	22-02-12	UNIT MM	SHT 1 OF 1