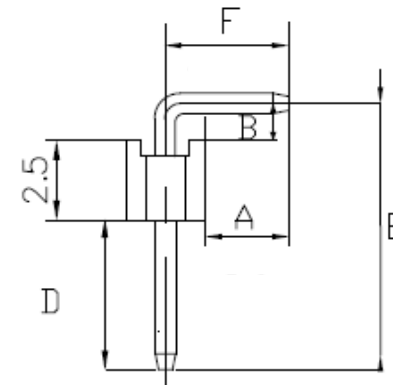


NOTE: 2~40 POSITION



Order Information

PART NO. 213A-xxRE-xx

213A TYPE

PIN TYPE

No of Contacts 2~40

- 01: (A=3.73,B=3.32,D=7.0)
- 02: (A=3.00,B=1.50,D=6.0)
- 03: (A=7.70,B=2.50,D=7.2)
- 04: (A=1.50,B=1.00,D=9.4,E=12.9)
- 05: (A=1.50,B=1.50,D=5.0)
- 06: (A=3.73,B=3.32,D=9.0)

Specifications:

- Insulator Material: PBT & 30% Glass Fiber(UL 94V-0)
- Contact Resistance: 30m ohms Max at DC 100mA
- Insulator Resistance: 1000M ohms Min at DC 500 V
- Current Rating: 3 Amps
- Dielectric Withstanding Voltage: AC 500V For 1 minute
- Temperature Rating: -40°C ~ + 85°C
- Contact Material: Phosphor Brass



GENERAL TOLERANCE ± 0.20	APP	JAMES	13-10-15	213A	REV. X6
	CHK	SHIRLEY	01-03-12		
	DRW	HUANG	22-02-12	UNIT MM	SHT 1 OF 1

PROJ.

SCALE : F
DO NOT SCALE DWG

TITLE
P/H 1*N 2.54mm 90D RoHS