

DIN Rail Mounting Enclosures for Embedded Systems

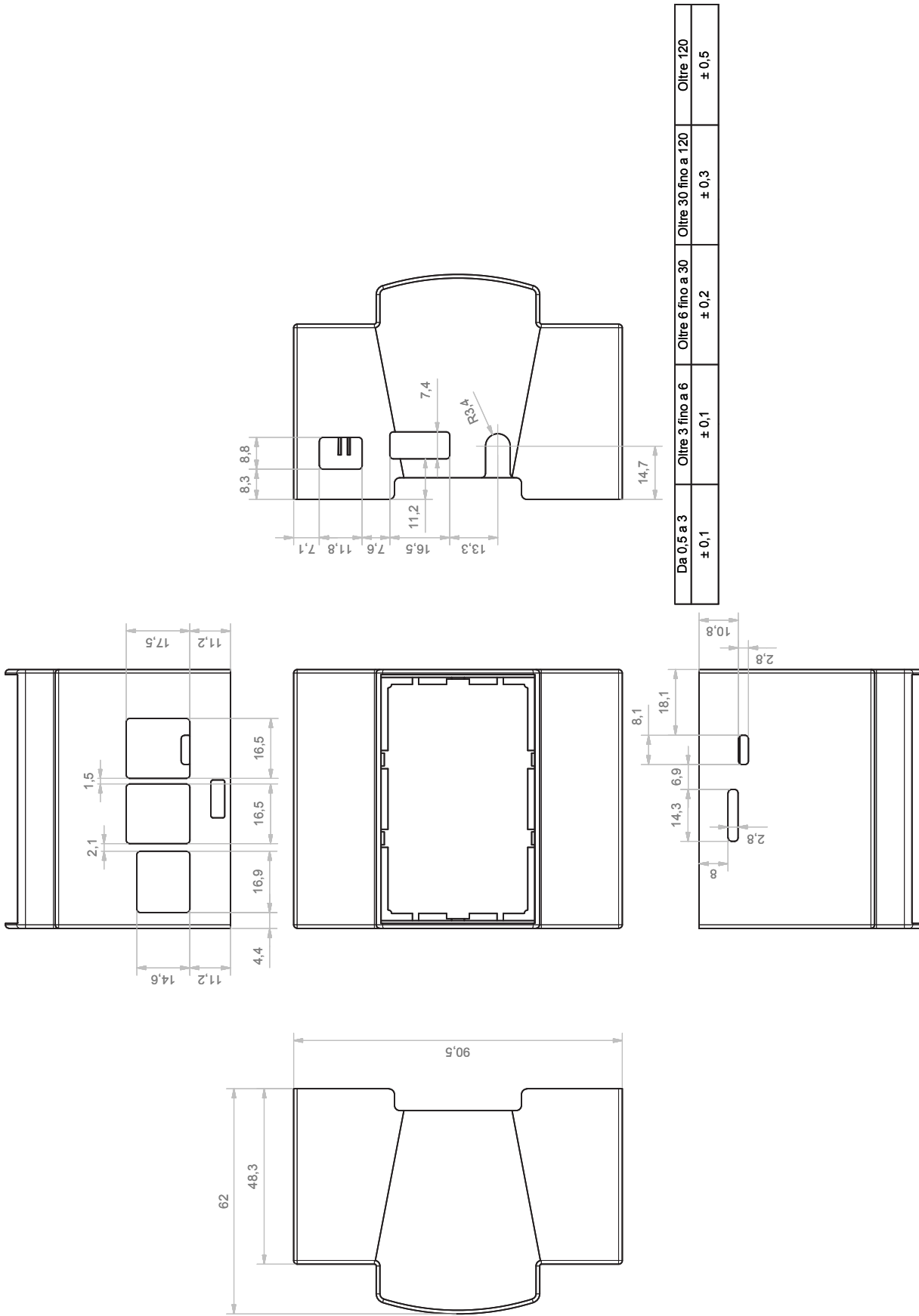
(Manufactured by Italtronic SRI. Padova, Italy)



P/N - 25.0410000.RMB

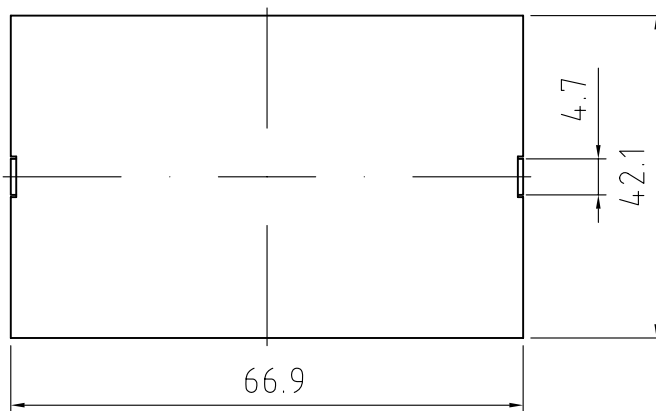
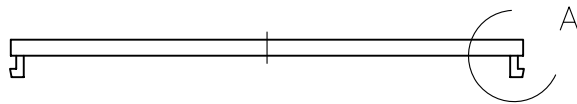
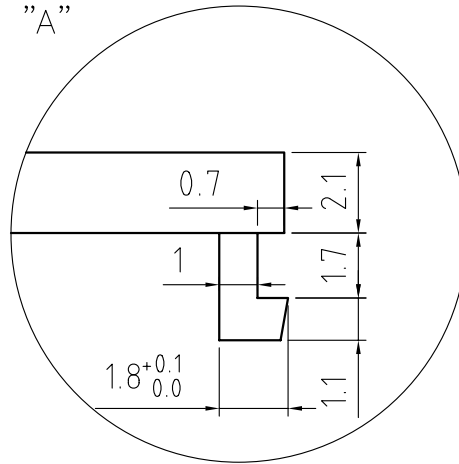
KIT Supplied includes:

Base, Enclosure Body, DIN Rail hook, transparent top panel

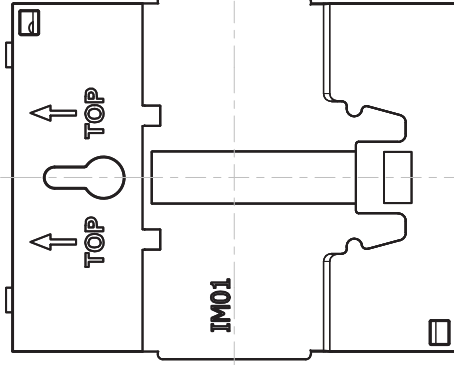
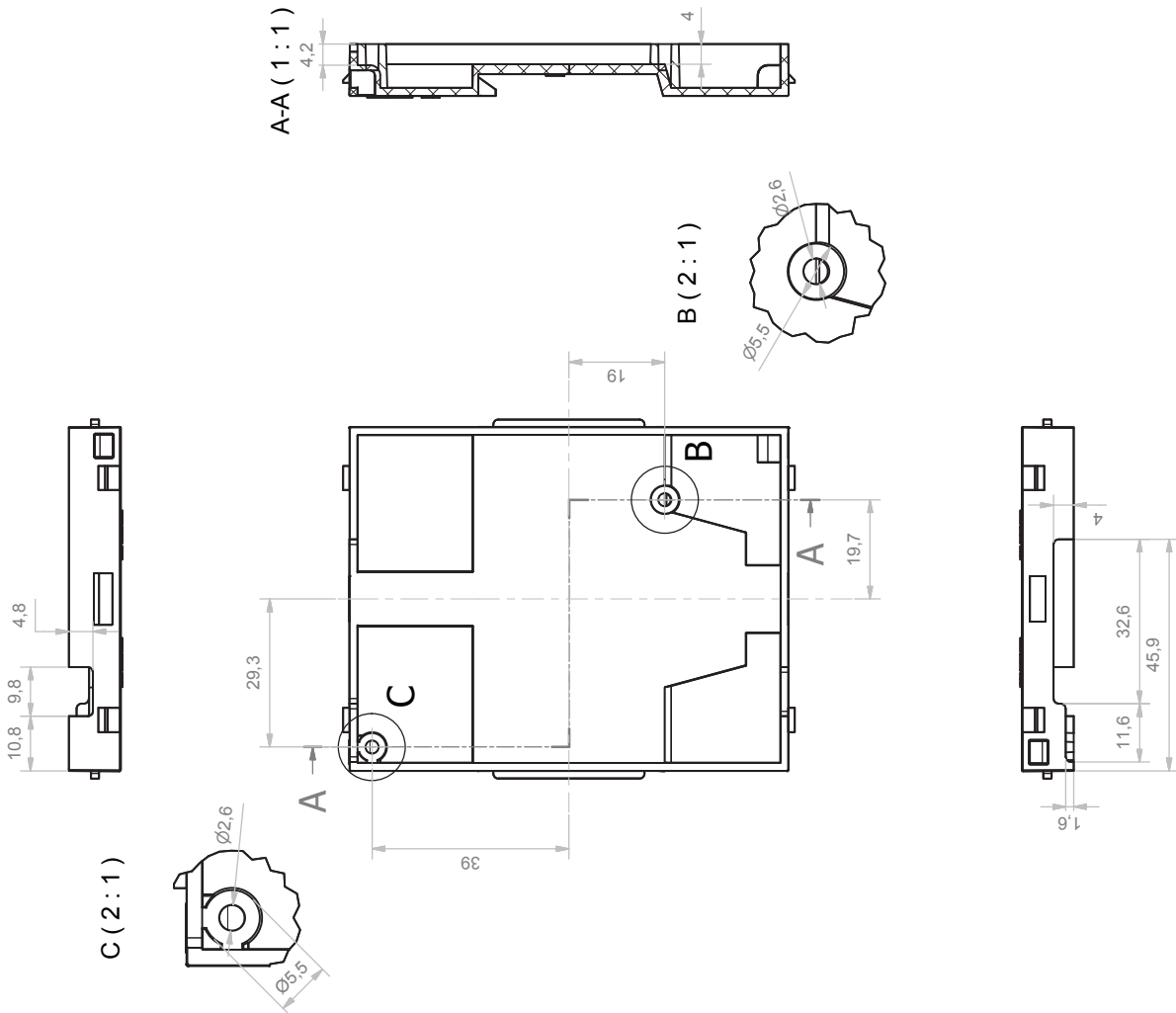


Raggi non quotati/Radius unquoted 1 mm

Dettaglio "A"



Tolleranza generale / General tolerance = ± 0.2 mm



Raggi non quotati / Radius unquoted 1 mm