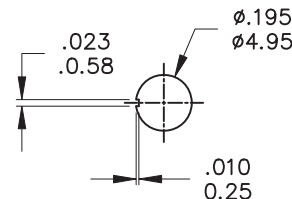


P.C. MOUNTING



PANEL MOUNTING

Model No.	POS.1	POS.2	POS.3
	2MS1	ON	NONE
Term. Comm.	2-3	N/A	2-1
SCHEMATIC			

SWITCH FUNCTION

SPECIFICATIONS

MECHANICAL LIFE: 30,000 make-and-break cycles.
CONTACT RESISTANCE: 20 mΩ max. initial @ 2-4VDC
 100mA for both silver and gold plated contacts.
INSULATION RESISTANCE: 1,000 MΩ min.
DIELECTRIC STRENGTH: 1,000 Vrms min. @sea level.
OPERATING TEMPERATURE: -30°C to 85°C.

MATERIALS

CASE - Diallyl phthalate(DAP)(UL94V-0)
ACTUATOR - Brass,chrome plated
BUSHING - Brass,nickel plated
HOUSING - Stainless Steel
SWITCH SUPPORT - Brass,tin plated.
TERMINALS/CONTACT - Brass, with Silver or gold plated.
 RoSH - 2002/95/EC

	CONTACT PLATING	TERMINAL PLATING	RATINGS
Q	Silver	Q = Silver	3 Amps @120 VAC or 28VDC 1 Amps @250 VAC
S		S = Silver,pure-tin	
C	Gold over Silver	C = Gold over silver	
K		K = Gold over silver,pure-tin	
R	Gold	R = Gold	0.4 Volt-Amps(VA) max. @20V max. (AC or DC)
G		G = Gold,pure-tin	

SCALE (比例) : 3 : 2

TOLERANCE (公差) :
 0.00 mm ± 0.25mm
 0.0 mm ± 0.40mm
 ANGULAR : ± 5°

FILE NAME : 2MSP0756

TITLE 圖名	Sub - Miniature Toggle Switches		SIZE 圖紙	A4
DWG NO. 圖號	2MS1-T1-B4-VS2-S-E		UNIT 單位	inch mm
REV. 版本	A	DATE 日期	OCT - 07 - 2011	SHEET 張數
CHECKED BY 審核	RICHARD		DRAWN BY 製圖	IRENE

	符號	原尺寸	修改後尺寸	變更日期
1	Ⓐ			
2	Ⓑ			
3	Ⓒ			
4	Ⓓ			
5	Ⓔ			