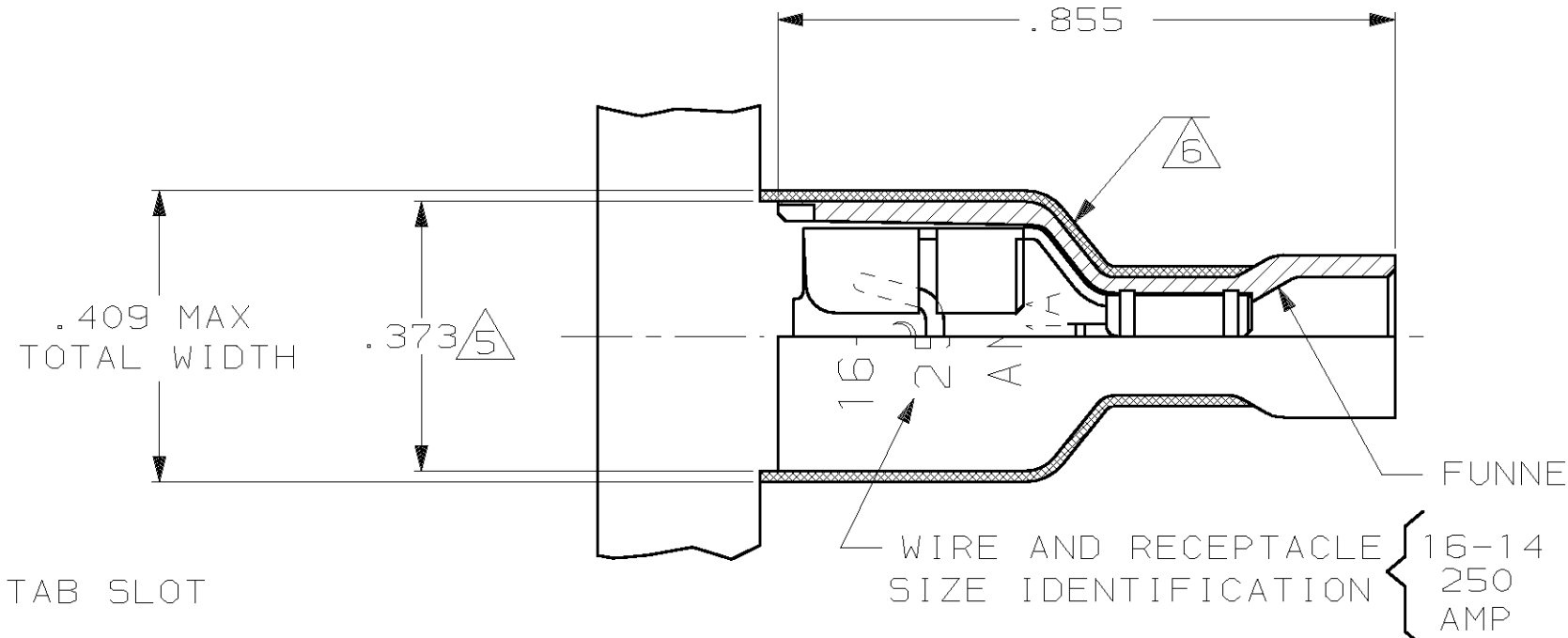
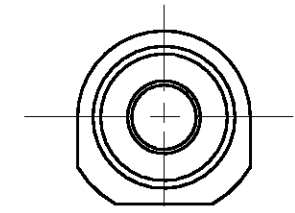
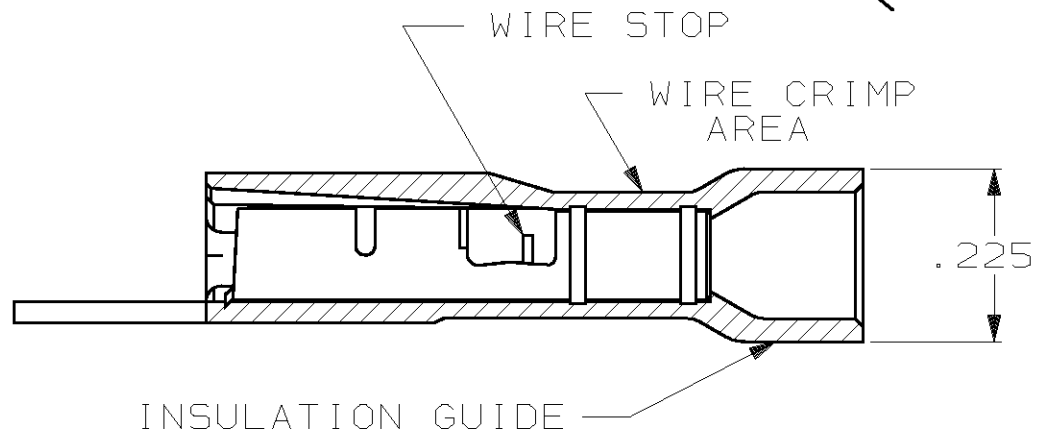
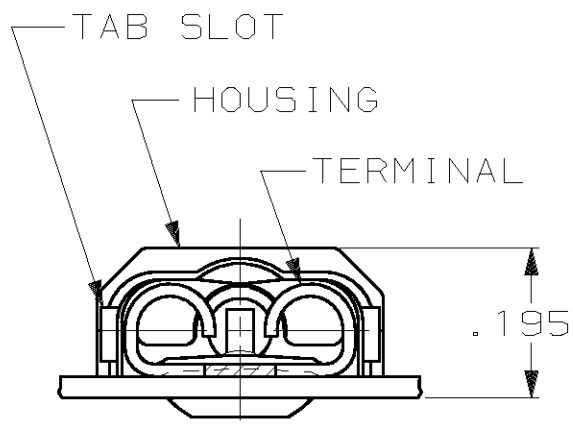


THIS DRAWING IS UNPUBLISHED. RELEASED FOR PUBLICATION, 19  
 © COPYRIGHT 19 BY AMP INCORPORATED. ALL INTERNATIONAL RIGHTS RESERVED.


LOC	DIST	P	F	REVISIONS			DATE	APPD
AF	50			ZONE	LTR	DESCRIPTION		
					R	REV PER 0G1A-0147-99	3JUN99	JR JH



- 1 MATES WITH .032±.001×.250 TAB
- 2 WIRE STRIP LENGTH .281
- 3 INSULATION SIZE .160 MAX DIA
- 4 CONTINUOUS STRIP ON REELS
- △5 DIMENSION DOES NOT INCLUDE TRIM BURR
- △6 .015 MAX CARRIER TRIM BURR PER SIDE IS ALLOWABLE IN THE SHADED AREA



BULK	HOUSING: NYLON, COLOR-BLUE TRANSLUCENT	5-350819-2
STANDARD	RECEPTACLE: #3 HARD BRASS TIN PL .000080 MIN THK	3-350819-2
PACKAGING	MATERIAL & FINISH	PART NO

DO NOT SCALE PRINT. UNLESS SPECIFIED DIMENSIONS IN INCHES TOLERANCES ON: 2 PLC DEC ± - 3 PLC DEC ± .015 ANGLES ± -	DR 10/6/88 P FORTNEY	 AMP INCORPORATED Harrisburg, Pa. 17105
	CHK 10/6/88 JR RUTH	
	APPD 10/6/88 K RANDOLPH	
	APPD 10/6/88 TL SHUTTER	
MATERIAL SEE TABLE	PRODUCT SPEC 108-2043	NAME RECEPTACLE ASSY, ULTRA-FAST, .250 SERIES, 16-14 AWG
FINISH SEE TABLE	APPLICATION SPEC 114-2123	SIZE <b>B</b> FSCM NO 00779 DRAWING NO 350819
	WEIGHT -	SCALE 4:1 SHEET 1 OF 1