

400KH/400KHK

FEATURES

- The full length is 26 mm (KHK), which is convenient to arrange on the board.
- Being extremely compact, it is compliant to 400V-60A class.
- Most suitable for small inverters, servos, UPSs, power supplies, etc.
- Two types are available for choice according to the installation method.

RATING

● Rating 5-30A

Rated voltage and blocking capacity : 400V AC - 10kA, 400V DC (L/R = 5ms)-10kA
 Minimum block-off current : 400V AC/DC - 4 times the rated amperage
 Maximum arc voltage : 800V

● Rating 35-60A

Rated voltage and blocking capacity : 400V AC-10kA, 400V DC (L/R = 2ms)-10kA
 Minimum block-off current : 400V AC - 5.3 times the rated amperage
 400V DC - 20 times the rated amperage
 360V DC - 8 times the rated amperage

Maximum arc voltage : 800V

UL standard approved rating

When applying the standard to UL standard approved items, use the fuse in the following rating.

● Rating 5-30A

Rated voltage and blocking capacity : Same as the standard rating

Specifications

Type	Rated Amperage (A)	Fusing I^2t (A ² S)	Shutdown I^2t (A ² S) at AC400V 10kA	Power Loss (W)	Weight (g)	Fig	Standard Approved
400KH-5	5	2	30	0.5	10.5	KH= Fig 1	UL
400KHK05				0.5			
400KH-10	10	6	90	1.0	8.5	KHK= Fig 2	CCC
400KHK10				1.1			
400KH-15	15	12	180	1.6	8.5	KHK= Fig 2	CCC
400KHK15				1.7			
400KH-20	20	25	290	2.3	8.5	KHK= Fig 2	CCC
400KHK20				2.9			
400KH-25	25	43	620	2.8	8.5	KHK= Fig 2	CCC
400KHK25				2.9			
400KH-30	30	67	920	2.8	8.5	KHK= Fig 2	CCC
400KHK30				3.9			
400KH-35	35	99	1280	2.8	8.5	KHK= Fig 2	CCC
400KHK35				5.2			
400KH-40	40	177	2030	3.3	8.5	KHK= Fig 2	CCC
400KHK40				5.2			
400KH-50	50	264	2700	4.5	8.5	KHK= Fig 2	CCC
400KHK50				6.9			
400KH-60	60	314	3080	5.4	8.5	KHK= Fig 2	CCC
400KHK60				7.1			

Dimensions

Fig 1 400KH

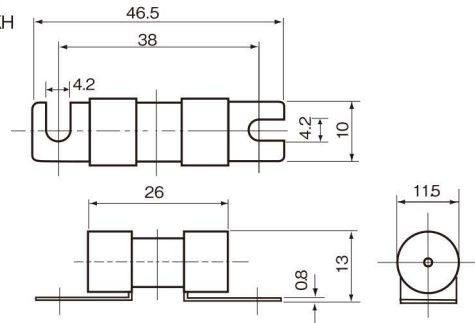
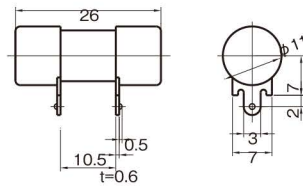
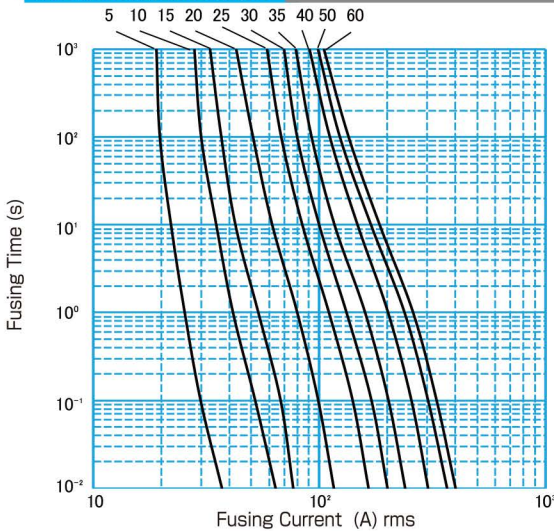


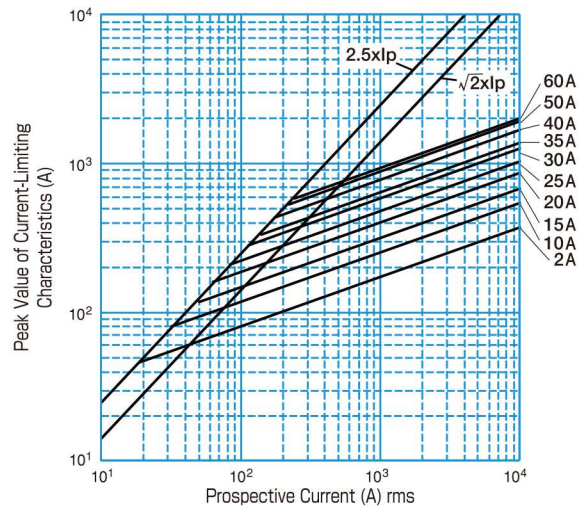
Fig 2 400KHK



Fusing Characteristics



Current-Limiting Characteristics



● Rating 35-60A

Rated voltage and blocking capacity : 400V AC-10kA
 360V DC (L/R = 2ms)-10kA

CCC standard approved rating

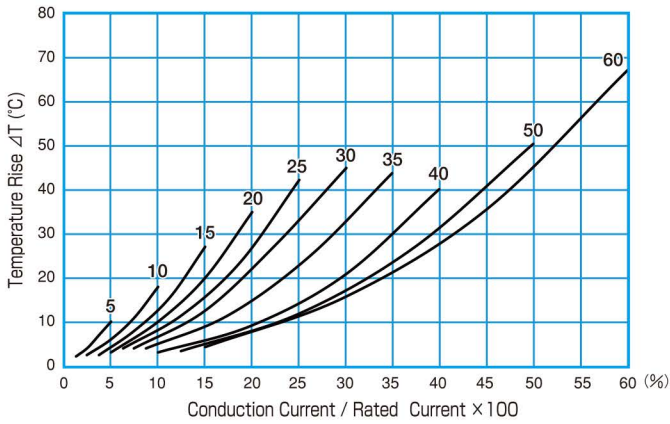
When applying the standard to UL standard approved items, use the fuse in the following rating.

Rated voltage and breaking capacity : 400V AC-50kA, 260V DC (L/R = 10ms)-50kA

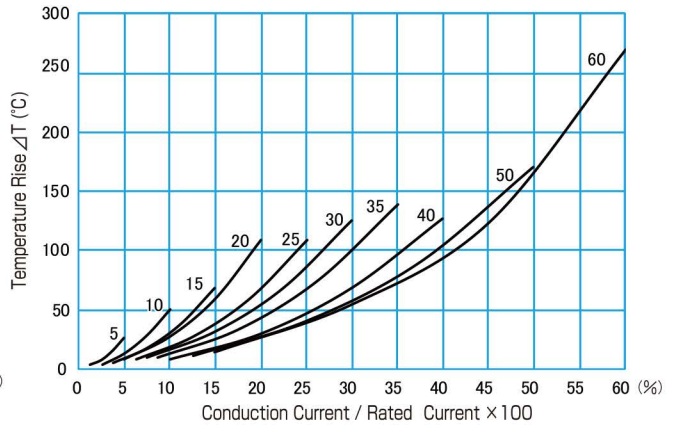
CAUTION!

- Read "FOR SAFE USE" and "PROTECT FUSE USER'S GUIDE" at the back of this catalog before use.
- A small fuse may generate a relatively large amount of heat, so a fuse with sufficient capacity is recommended for long, continuous use.
- Fusing indication function is not provided.
- Series 400KHK; Use it at 50% or less of the rated current.

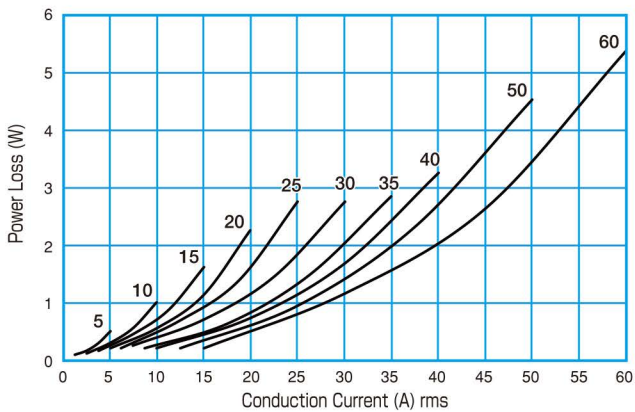
Temperature Rise 400KH



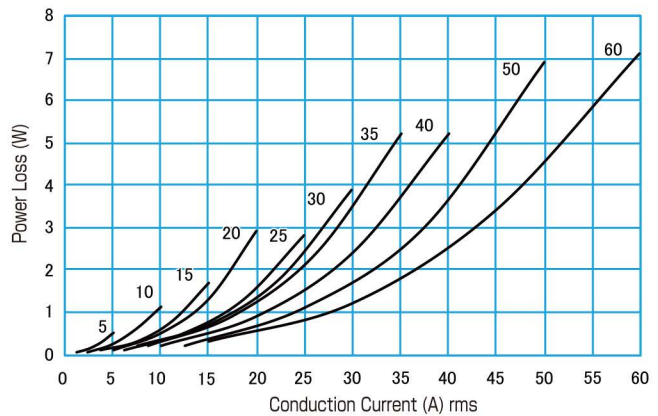
400KHK



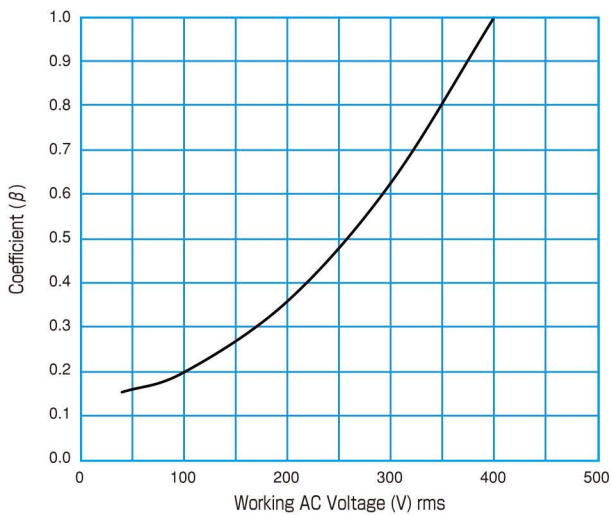
Power Loss 400KH



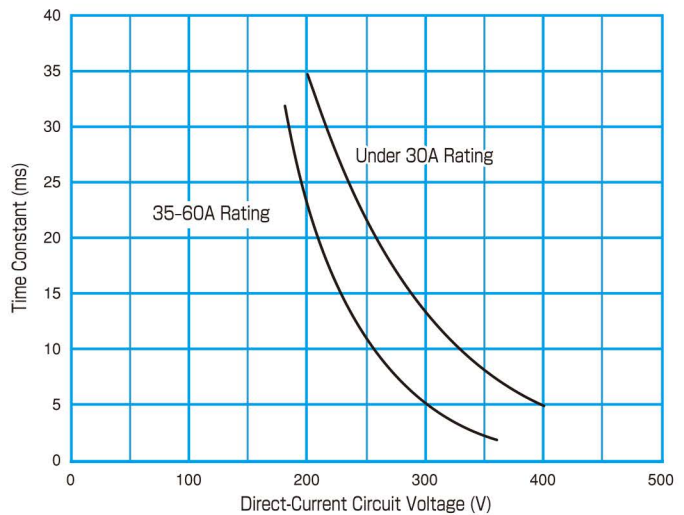
400KHK



Shutdown I²t Against Working AC Voltage



Application to Direct-Current Circuit



Power Loss and Temperature Characteristics

● Testing Conditions for Board-Soldered-Type Fuses

The power loss and the temperature characteristics are studied using an FR-4 board (one-side board) and a 35- μ m-thick copper foil with a copper foil width of 0.5 mm/A depending on the rated amperage (e.g., 5 mm width for a product rated at 10A).