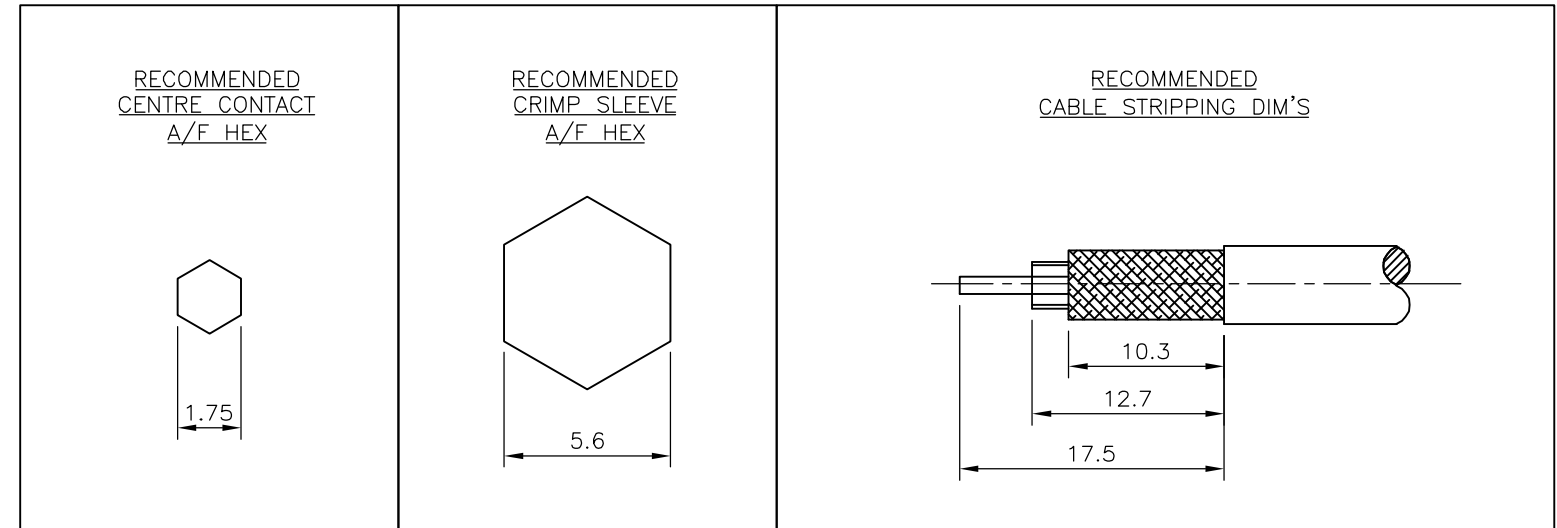
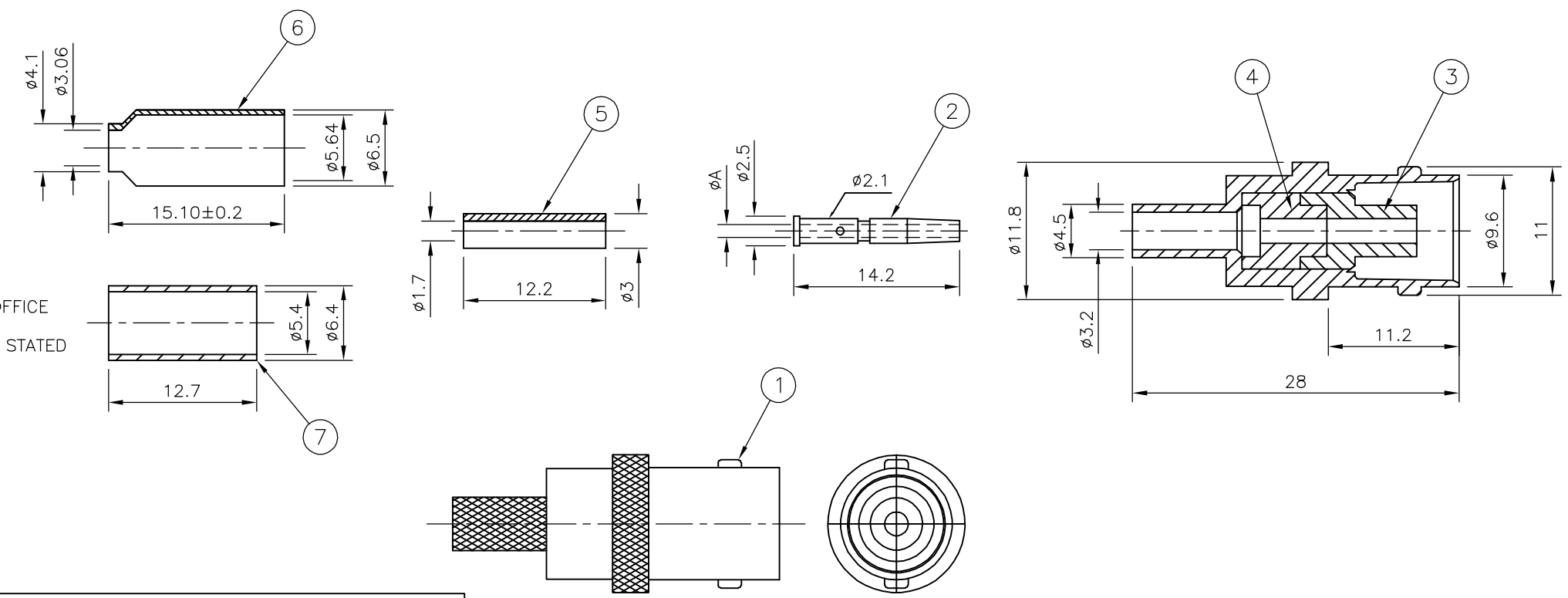


THIS DRAWING IS UNPUBLISHED. RELEASED FOR PUBLICATION JUNE ,2004.  
 © COPYRIGHT 2004 BY TYCO ELECTRONICS CORPORATION. ALL RIGHTS RESERVED.

LOC	DIST	REVISIONS					
E	B	P	LTR	DESCRIPTION	DATE	DWN	APVD
		A		EBD0-0267-04	16JUN04	JMS	FWK

- NOTES**
- 1 SINGLE PACK IN ACCORDANCE WITH AMP SPEC 107-3275
  - 2 100 TRAY PACK IN ACCORDANCE WITH AMP SPEC 107-3275
  - 3 Au PLATING OVER Ni PLATING OVER Cu PLATING
  - 4 Ni PLATING OVER Cu PLATING
  5. HAND TOOL: 9-1478240-0
  6. DIE SET: SEE TABLE
  7. CHARACTERISTICS  
 FREQUENCY RANGE: DC-2GHz  
 NOMINAL IMPEDANCE: 50 OHMS  
 INSULATION RESISTANCE: 5000 MOHMS  
 DIELECTRIC WITHSTAND VOLTAGE: 500V RMS  
 TEMPERATURE RATE: -55°C TO +85°C  
 CONTACT RESISTANCE:  
 CENTRE CONTACT 1.5 mOHMS  
 OUTER CONTACT 1.0 mOHMS
  8. MECHANICAL CHARACTERISTICS  
 DURABILITY: 50 CYCLES
  9. FOR TECHNICAL DATA REFER TO YOUR LOCAL TYCO ELECTRONICS SALES OFFICE
  10. ALL DIMENSIONS ARE NOMINAL FOR REFERENCE ONLY UNLESS OTHERWISE STATED

				1.1	9-1478242-0	RG58C/U, 141A/U, URM43, 76, BELDEN 9907, KX 15			5-1634511-3
				1.1	9-1478242-0	RG58C/U, 141A/U, URM43, 76, BELDEN 9907, KX 15			5-1634511-2
				0.57	9-1478242-0	RG174A/U, 188A/U, 316/U, URM95, KX 3B, KX 22A			5-1634511-1
				0.57	9-1478242-0	RG174A/U, 188A/U, 316/U, URM95, KX 3B, KX 22A			5-1634511-0
				A	DIE SET	CABLE GROUPS			PART NO.



QTY	QTY	QTY	QTY	MATERIAL	DESCRIPTION	ITEM
1	1	-	-	BRASS	CRIMP SLEEVE	7
-	-	1	1	BRASS	CRIMP SLEEVE	6
-	-	1	1	NYLON	PUSHER SLEEVE	5
1	1	1	1	POLYMETHYLPENTENE	INSULATOR	4
1	1	1	1	POLYMETHYLPENTENE	INSULATOR	3
1	1	1	1	PHOSPHOR BRONZE	CONTACT	2
1	1	1	1	ZINC ALLOY	BODY	1
5--35--25--15--0				MATERIAL	DESCRIPTION	ITEM

THIS DRAWING IS A CONTROLLED DOCUMENT.

DWN J.SANDWELL 16JUN04  
 CHK S.PARLOW 16JUN04  
 APVD F.WHEELER-KING 16JUN04

**tyco Electronics** Tyco Electronics Corporation  
 Bideford, UK, EX39 4HE

NAME: BNC STRAIGHT JACK CRIMP 50 OHM

PRODUCT SPEC: -  
 APPLICATION SPEC: -  
 WEIGHT: -

SIZE: A3 CAGE CODE: 00779 DRAWING NO: C-1634511 RESTRICTED TO: -

CUSTOMER DRAWING SCALE: NTS SHEET: 1 OF 1 REV: A