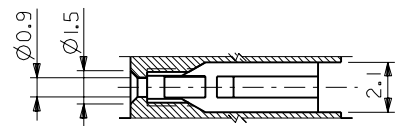


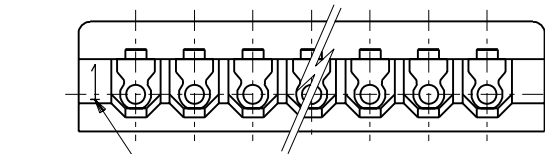
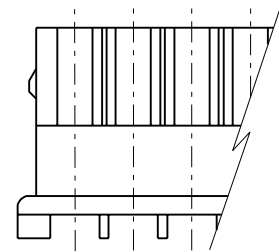
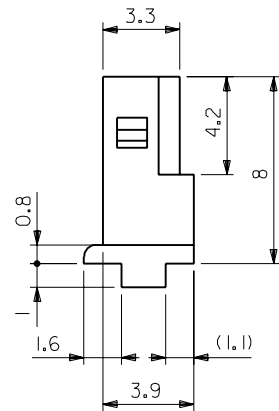
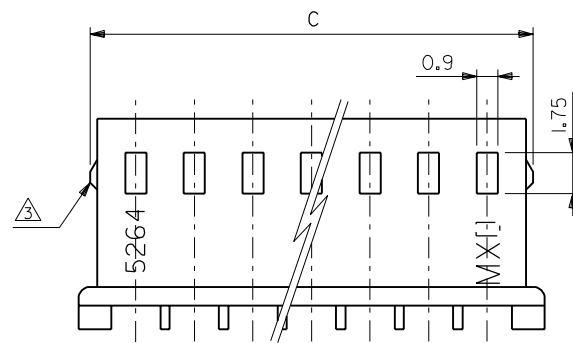
断面 Z-Z



断面 Y-Y

注記:

- 適合端子: 5263PBT
- 嵌合相手: 5267 シリーズ, 5268 シリーズ
- △ 9極以上はロックなし。

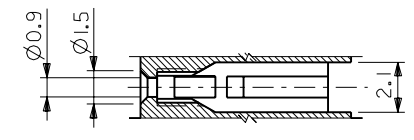
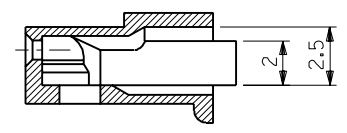
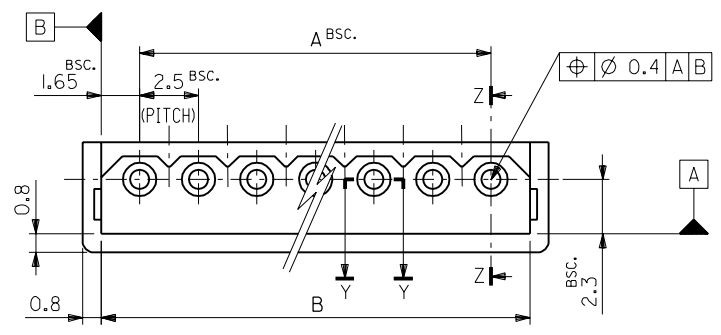


CIRCUIT NO.

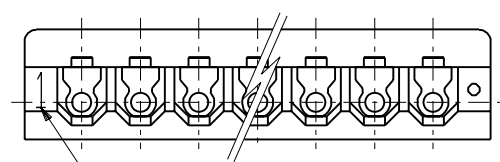
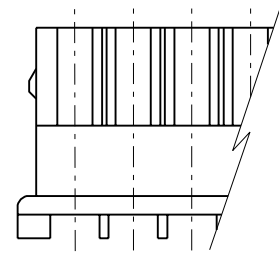
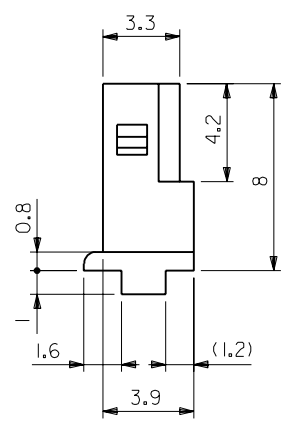
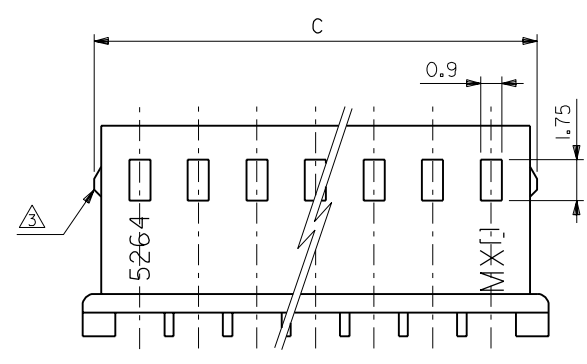
	38.3	35	50-37-5153	5264-15	15	
	35.8	32.5	-5143	-14	14	
	33.3	30	-5133	-13	13	
	30.8	27.5	-5123	-12	12	
	28.3	25	-5113	-11	11	
	25.8	22.5	-5103	-10	10	
	23.3	20	-5093	-09	9	
	21.4	20.8	17.5	-5083	-08	8
	18.9	18.3	15	-5073	-07	7
	16.4	15.8	12.5	-5063	-06	6
	13.9	13.3	10	-5053	-05	5
	11.4	10.8	7.5	-5043	-04	4
	8.9	8.3	5	-5033	-03	3
	6.4	5.8	2.5	50-37-5023	5264-02	2
C	B	A	EDP NO.	ENG. NO.	極数	

角度 ANGLE	±3°				
30以上 OVER	+0.3				
10以上 30未滿 UNDER	+0.25	H	再作図及び変更	U10590	K.J
10未滿 UNDER	+0.2	記号 LTR	変更内容	DR. CHK.	DATE
一般公差 GENERAL TOLERANCES		REVISE ONLY ON CAD SYSTEM			

材料 MATERIAL	66ナイロン UL94V-0	MOLEX-JAPAN CO.,LTD. 日本モレックス株式会社
仕上げ FINISH	—	
適用電線範囲 WIRE RANGE	—	EDP. NO. 50-37-5**3
被覆外径 INS. RANGE	—	ENG. NO. SD-5264-N
DRAWN BY K.TOJO '91/7/26	CHK'D BY '91/07/30 M.FUKUSHIMA	TITLE 名称 2.5 LOW PROFILE RECEPTACLE HOUSING
APP'D BY '91/07/30 M.ENOMOTO	尺度 SCALE 5-1	REV H



NOTES:  
 1. SUITABLE TERMINAL : 5263SERIES  
 2. MATES WITH : 5267SERIES,5268SERIES  
 3. 9 CIRCUITS OR MORE WITHOUT LOOK.



	50.8	47.5	50-37-5203	5264-20	20	
	48.3	45	-5193	-19	19	
	45.8	42.5	-5183	-18	18	
	43.3	40	-5173	-17	17	
	40.8	37.5	-5163	-16	16	
	38.3	35	-5153	-15	15	
	35.8	32.5	-5143	-14	14	
	33.3	30	-5133	-13	13	
	30.8	27.5	-5123	-12	12	
	28.3	25	-5113	-11	11	
	25.8	22.5	-5103	-10	10	
	23.3	20	-5093	-09	9	
	21.4	20.8	17.5	-5083	-08	8
	18.9	18.3	15	-5073	-07	7
	16.4	15.8	12.5	-5063	-06	6
	13.9	13.3	10	-5053	-05	5
	11.4	10.8	7.5	-5043	-04	4
	8.9	8.3	5	-5033	-03	3
	6.4	5.8	2.5	50-37-5023	5264-02	2
	C	B	A	EDP NO.	ENG.NO.	CKT.

角度 ANGLE ±3° 30以上 OVER ±0.3 10以上 30未滿 UNDER ±0.25 10未滿 UNDER ±0.2 一般公差 GENERAL TOLERANCES		H REVISED & REDRAWN (J105910) 記号 LTR 変更内容 REVISION RECORD DR. CHK. DATE		K.T. H.A. 9/11/15 日付 DATE 材料 MATERIAL 66NYLON,UL94V-0 仕上げ FINISH // 適用電線範囲 WIRE RANGE // 被覆外径 INS. RANGE // DRAWN BY K.TOJO '91/11/5 APP'D BY M.ENOMOTO '92/01/15 CHK'D BY M.FUKUSHIMA '92/01/15 尺度 SCALE 5-1		MOLEX-JAPAN CO.,LTD. 日本モレックス株式会社 EDP. NO. 50-37-5**3 ENG. NO. SD-5264-N TITLE 名称 2.5 LOW PROFILE RECEPTACLE HOUSING REV H	
---	--	---	--	--	--	--	--