

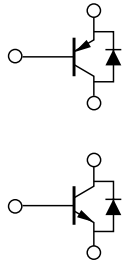
Specifications List by Application Motor Driver Arrays

●H Bridge

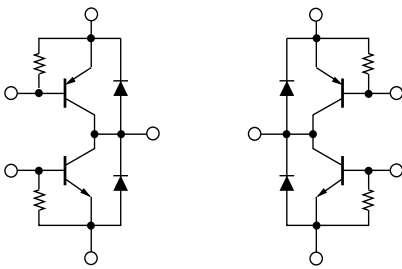
| Part Number | Circuit Count | V _{CE0} (V)/ V _{DSS} (V) | I _C (A)/ I _D (A) | h _{FE} (min) | R _{DS(ON)} max (Ω) | Equivalent Circuit | Package |
|-------------|---------------|--|--|-----------------------|-----------------------------|--------------------|---------------------------|
| STA492A | 2 | ±20 | ±7 | 45 | | 1 | SIP10 (STA10Pin) |
| STA458C | 4 | ±30 | ±5 | 40 | | 2 | SIP10 (STA10Pin) |
| STA431A | 4 | ±60 | ±3 | 40 | | 3 | SIP10 (STA10Pin) |
| STA434A | 4 | ±60 | ±4 | 1000 | | 4 | SIP10 (STA10Pin) |
| STA457C | 4 | ±60 | ±4 | 2000 | | 5 | SIP10 (STA10Pin) |
| SLA4310 | 4 | ±60 | ±4 | 80 | | 6 | SIP12 with Fin (SLA12Pin) |
| SLA4340 | 4 | ±60 | ±4 | 2000 | | 4 | SIP12 with Fin (SLA12Pin) |
| SLA5007 | 4 | ±60 | +5/-4 | | 0.22/0.55 | 7 | SIP12 with Fin (SLA12Pin) |
| SMA5103 | 4 | ±60 | +5/-4 | | 0.22/0.55 | 7 | SIP12 (SMA12Pin) |
| SLA8001 | 4 | ±60 | ±12 | 50 | | 2 | SIP12 with Fin (SLA12Pin) |
| SDH03 | 4 | +100/-60 | ±1.5 | 2000 | | 8 | PS16 (Surface-Mount) |
| SLA4390 | 4 | ±100 | ±5 | 2000 | | 4 | SIP12 with Fin (SLA12Pin) |
| SLA4391 | 4 | ±100 | ±5 | 1000 | | 9 | SIP12 with Fin (SLA12Pin) |
| SLA5013 | 4 | ±100 | ±5 | | 0.3/0.7 | 7 | SIP12 with Fin (SLA12Pin) |
| STA491A | 4 | ±20 | ±7 | 45 | | 10 | SIP10 (STA10Pin) |

●Equivalent Circuit (for Motor Driver)

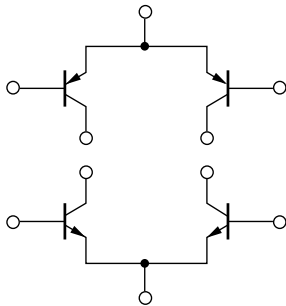
①



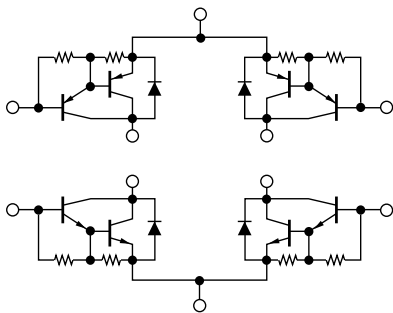
②



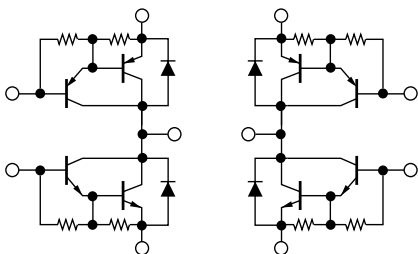
③



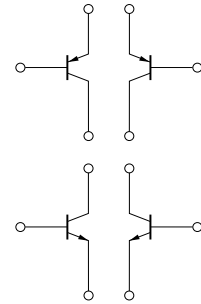
④



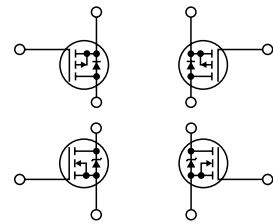
⑤



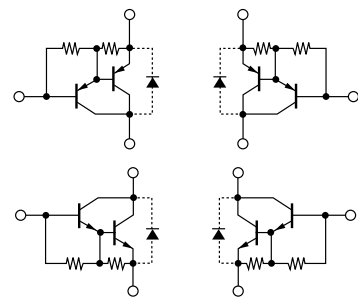
⑥



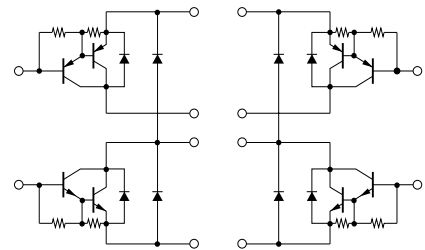
⑦



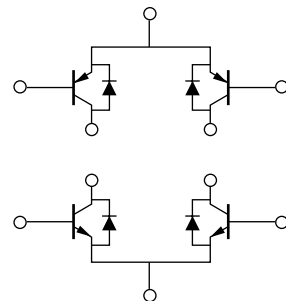
⑧



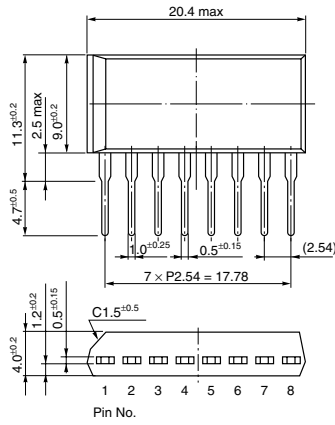
⑨



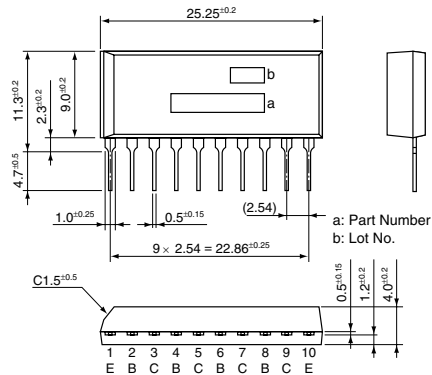
⑩



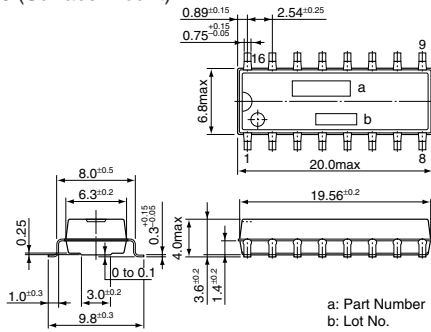
• SIP 8 (STA8Pin)



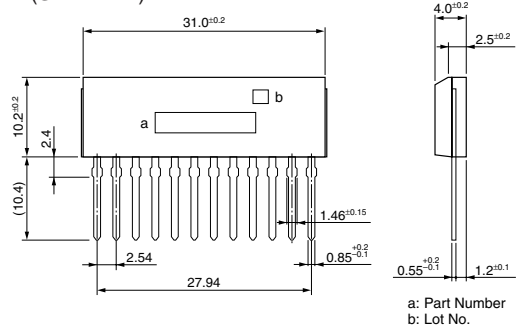
• SIP 10 (STA10Pin)



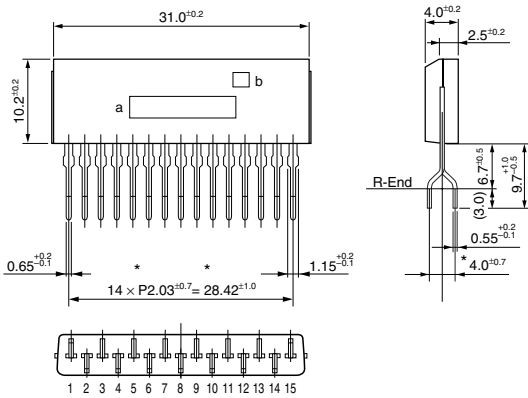
• PS 16 (Surface-Mount)



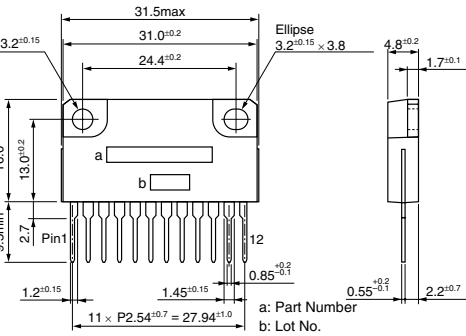
• SIP 12 (SMA12Pin)



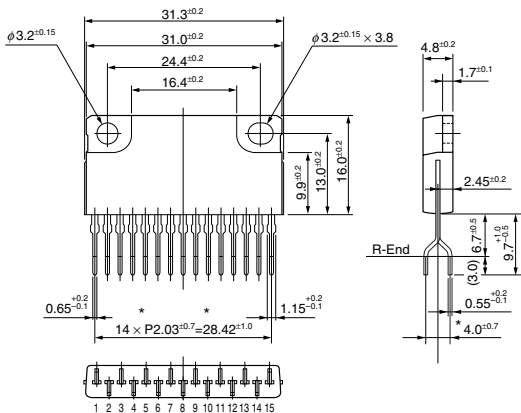
• SIP 15 (SMA15Pin)



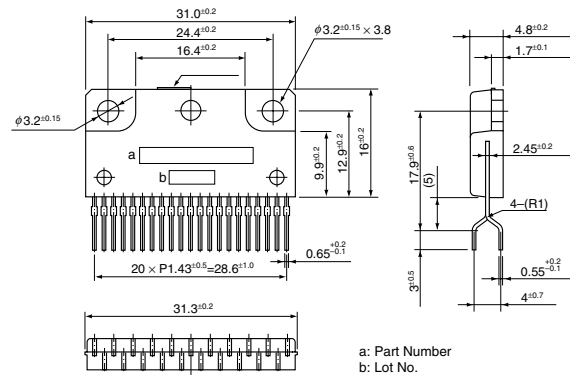
• SIP 12 with Fin (SLA12Pin)



• SIP 15 with Fin (SLA15Pin)



• SIP 21 with Fin (SLA21Pin)



(Unit:mm)