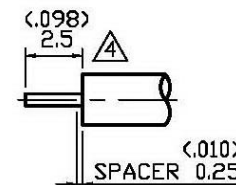
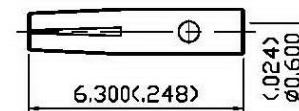
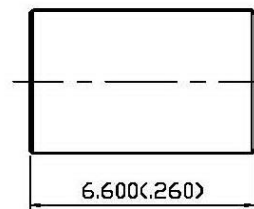
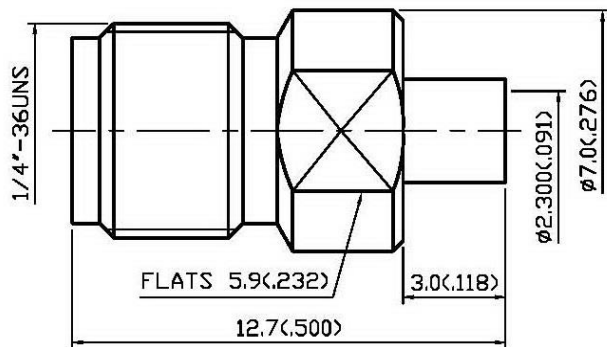


NO	DESCRIPTION	DATE
①	BACKGROUND FORMAT UPDATED	05.06.02'
②	ADD STRIPPING DIMENSION BACKGROUND FORMAT UPDATED	08.04.10'
③	WORKING VOLTAGE → VOLTAGE RATING DEL PROOF VOLTAGE	01.23.13'
④	2.16 → 2.5	01.13.14'



STRIPPING DIMENSION
SCALE 4:1

1.0 ELECTRICAL

- 1.1 FREQUENCY RANGE: DC-18 GHz
- 1.2 NOMINAL IMPEDANCE: 50 OHMS
- 1.3 VOLTAGE RATING: 335 VOLTS MAX. ③
- 1.4 VSWR: 1.25 MAX.

2.0 MATERIALS

- 2.1 BODIES: BRASS PER JIS-C3604
- 2.2 CENTER CONTACT: BERYLLIUM COPPER PER ASTM B196 UNS C17300
- 2.3 INSULATION: TEFLON PER ASTM D1457 AND ASTM D1710

3.0 FINISHES AND OTHERS

3.1 SEE BELOW TABLE FOR DETAILS.

4.0 MECHANICAL

- 4.1 INTERFACE IN ACCORDANCE WITH: MIL-STD-346A
- 4.2 FOR USE WITH RG405 OR SIMILAR STYLE CABLE
- 4.3 CABLE ATTACHMENT: OUTER: SOLDER, INNER: SOLDER

5.0 ENVIRONMENTAL

5.1 OPERATING TEMPERATURE RANGE: -65° C TO +165° C

NO	DESCRIPTION	MATERIAL	Q'TY	FINISH
3	CENTER CONTACT	BERYLLIUM COPPER	1	GOLD 50 μ" MIN.
2	INSULATION	TEFLON	1	NONE
1	BODY	BRASS	1	GOLD 3 μ" MIN.



APPROVED

by _____ DATE: _____

DESCRIPTION		SMA STRAIGHT JACK SOLDER	
製圖	DRAWN Yoko	TOLERANCE	品名 19-57 T.G.G RG405 (50Ω)
檢圖	CHECK Angela	單位 mm(In)	DATE 08.21.98'
認定	APPROVAL Angela	比例 6:1	REV. A-4
		DWG.NO.	19-0004
		SCALE	
		ANGLE	±5°