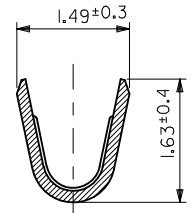
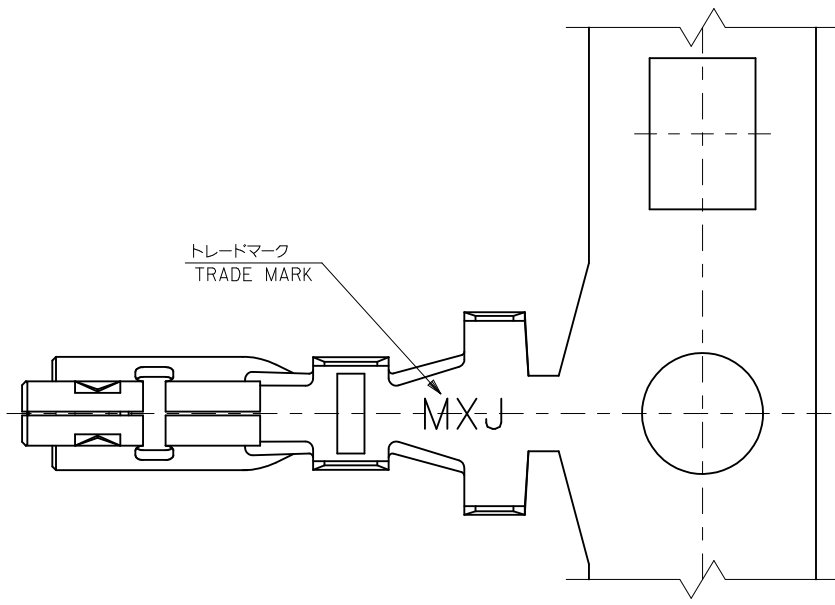
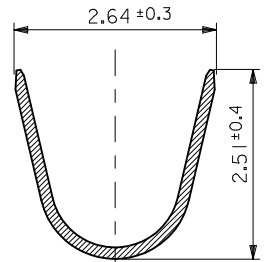


注記  
NOTES

1. 使用材料 : 銅合金, 錫メッキ (t=0.15)  
MATERIAL : PRE-TINNED COPPER ALLOY
2. 適合ハウジング : 51242, 51382, 51353シリーズ  
APPLICABLE HOUSING : 51242, 51382, 51353 SERIES
3. ELV及びRoHS適合品  
ELV AND RoHS COMPLIANT.

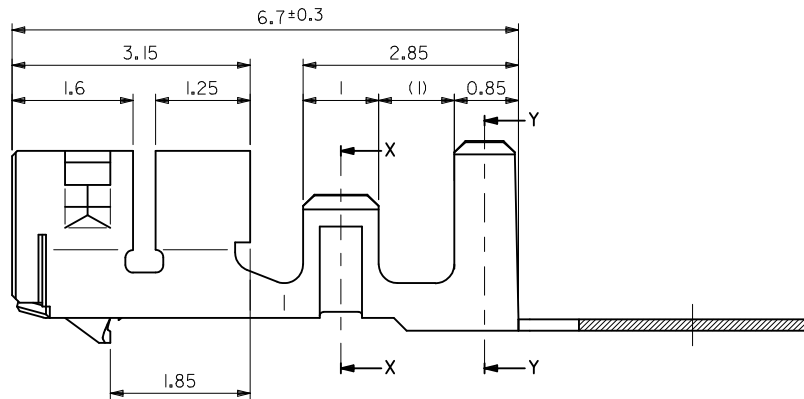
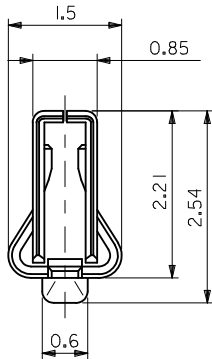


SECT. X-X



SECT. Y-Y

無鉛  
LEAD FREE



56134-9100	バラ状 LOOSE
56134-9000	連鎖状 CHAIN
MATERIAL NO.	端子形状 FORM

MATERIAL 材料	FINISH 仕上げ
注記参照 SEE NOTES	//
WIRE RANGE 適用電線範囲	
AWG#22~#28 : 0.079~0.34mm <sup>2</sup> KV0.2~0.4 : 0.2~0.4mm <sup>2</sup>	
INS. RANGE 被覆外径	
Ø0.9 ~ Ø1.7 mm	

REVISED	DESCRIPTION
EC NO.: J2011-0960	2011/01/20
DRW:RHORI	2011/01/20
CHKD:KASAKAWA	2011/01/20
APPR:NUKITA	2011/01/21

GENERAL TOLERANCES (UNLESS SPECIFIED)	
10 UNDER	±0.2
10 OVER 30 UNDER	±0.25
30 OVER	±0.3
ANGULAR	±3 °
DRAFT WHERE APPLICABLE MUST REMAIN WITHIN DIMENSIONS	

DIMENSION STYLE MM ONLY	
DRAWN BY	DATE
NITO	2002/02/28
CHECKED BY	DATE
KASAKAWA	2003/06/12
APPROVED BY	DATE
MATERIAL NO. SEE CHART	
SIZE	A3

SCALE 15:1	DESIGN UNITS METRIC	THIRD ANGLE PROJECTION
TITLE 2.0 WIRE TO BOARD CONN. CRIMP RECEPTACLE		
MOLEX INCORPORATED		
DOCUMENT NO. SD-56134-005	SHEET NO. 1 OF 1	
THIS DRAWING CONTAINS INFORMATION THAT IS PROPRIETARY TO MOLEX INCORPORATED AND SHOULD NOT BE USED WITHOUT WRITTEN PERMISSION		