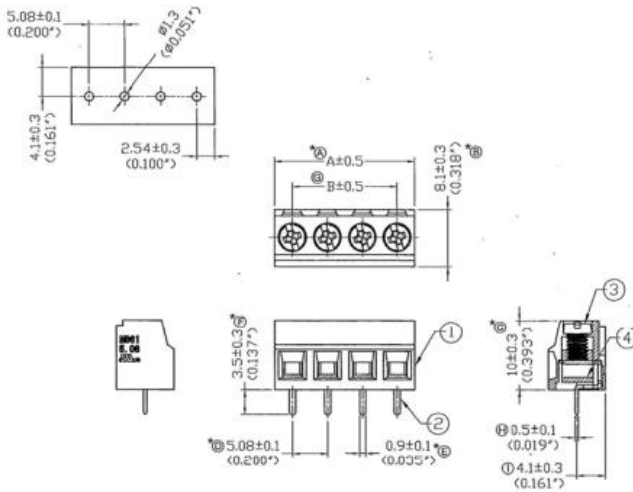


# Datasheet

## 3 way PCB terminal block 5.08mm

RS Stock number [790-1073](#)

### PCB Layout



Pitch: 5.08mm (0.200inch)					
poles	A(mm )	B(mm )	Poles	A(mm )	B(mm )
2	10.6	5.08	15	76.20	71.12
3	15.24	10.16	16	81.28	76.20
4	20.32	15.24	17		
5	25.40	20.32	18		
6	30.48	25.40	19		
7	35.56	30.48	20		
8	40.64	35.56	21		
9	45.72	40.64	22		
10	50.80	45.72	23		
11	55.88	50.80	24		
12	60.96	55.88	25		
13	66.04	60.96			
14	71.12	66.04			

## Specifications

- Current Rating: 16Amp AC300V
- Insulation Withstands Volt: AC2000V min
- Insulation Resistance: >2000MΩ DC500V
- Operating Temperature: -40°C to +150°C
- Wire Strip Length: 4mm~5mm
- Wire Range: 14~26 AWG
- Screw Torque: 4.5 1b-Inch

### Material

- Insulating Body: Polyamide 66(UL94V-0)
- Terminal: Brass / Zinc Plated/Finish
- Screw: Steel / Steel Plated/Finish
- Cage Clamp: Brass Brass/Plated/Finish