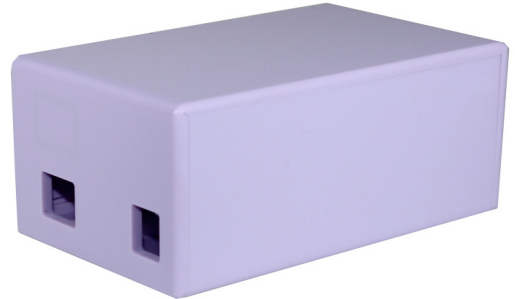


DEVELOPMENT BOARD ENCLOSURES

Arduino Enclosures

NO SCREWS, NO GLUE, MIX AND MATCH CASES FOR THE ARDUINO

- Designed to house the Arduino Uno and Ethernet shield, via clip-in grooves - **NO SCREWS REQUIRED!**
- Knockout for Ethernet port*
- All cut-outs are pre-cut into the case* - **NO MODS REQUIRED!**
- Supplied with rubber feet
- Gloss finish
- **Mix and match colours - HAVE IT YOUR WAY!**

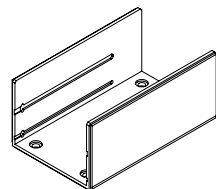
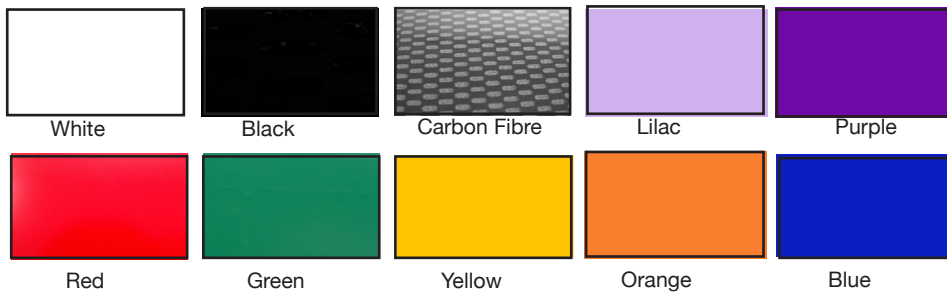


Arduino and Arduino Board not included

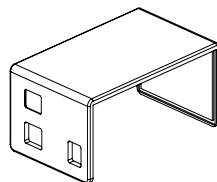
Material:

- Thickness 3mm: HB Rated
- Coloured materials: High Impact Polystyrene (HIPS)
- Carbon Fibre finish: Acrylic Capped ABS

Available in a range of colours: Gloss finish



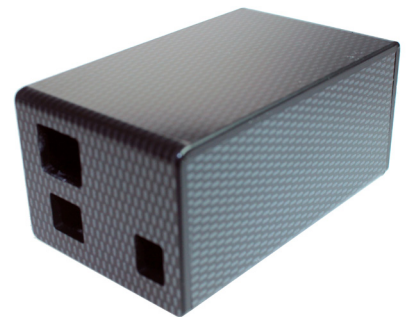
BASE



TOP

CB PART NO.	COLOURS
CBARD-BA-BLK	Black
CBARD-BA-BLU	Blue
CBARD-BA-GRN	Green
CBARD-BA-LIL	Lilac
CBARD-BA-ORG	Orange
CBARD-BA-PUR	Purple
CBARD-BA-RED	Red
CBARD-BA-WHT	White
CBARD-BA-YEL	Yellow
CBARD-BA-CAR	Carbon Fibre

CB PART NO.	COLOURS
CBARD-AA-BLK	Black
CBARD-AA-BLU	Blue
CBARD-AA-GRN	Green
CBARD-AA-LIL	Lilac
CBARD-AA-ORG	Orange
CBARD-AA-PUR	Purple
CBARD-AA-RED	Red
CBARD-AA-WHT	White
CBARD-AA-YEL	Yellow
CBARD-AA-CAR	Carbon Fibre



*Image showing Ethernet port knockout