

| CHIA SHIN PART | A | B | C | D | E | COLOR | LINE | SHAFT |
|------------------|------|------|------|-----|------|-------|-------|-------------|
| CP-CE15-6-S(6.4) | 15.0 | 15.0 | 13.5 | 7.5 | 11.5 | BLACK | WHITE | 6.4mm screw |
| CP-CE15-6-S(6.0) | 15.0 | 15.0 | 13.5 | 7.5 | 11.5 | BLACK | WHITE | 6.0mm screw |
| CP-CE15-6-T18 | 15.0 | 15.0 | 13.5 | 7.5 | 11.5 | BLACK | WHITE | T18 |
| CP-CE20-6-S(6.4) | 20.0 | 15.9 | 14.0 | 8.0 | 15.8 | BLACK | WHITE | 6.4mm screw |
| CP-CE20-6-S(6.0) | 20.0 | 15.9 | 14.0 | 8.0 | 15.8 | BLACK | WHITE | 6.0mm screw |
| CP-CE20-6-T18 | 20.0 | 15.9 | 14.0 | 8.0 | 15.8 | BLACK | WHITE | T18 |
| CP-CE20-5-T18 | 20.0 | 15.9 | 14.0 | 8.0 | 15.8 | GREY | BLACK | T18 |
| CP-CE24-6-S(6.4) | 24.0 | 21.8 | 19.6 | 8.0 | 15.8 | BLACK | WHITE | 6.4mm screw |
| CP-CE24-6-S(6.0) | 24.0 | 21.8 | 19.6 | 8.0 | 15.8 | BLACK | WHITE | 6.0mm screw |



CP-CE15-6



CP-CE15-5

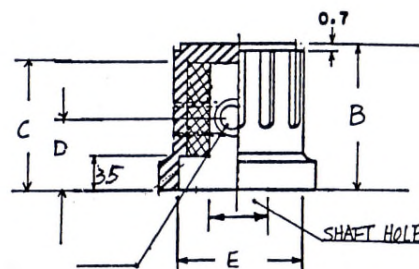
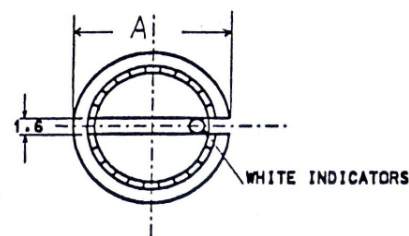


CP-CE20-6



CP-CE24-6

※Shaftはそれぞれ6.1mm仕様もあり



CP-CE15-5-S(6.1)W6

Material: PLASTIC
Tolerance +/-0.20
Unit : mm

| | | |
|-------|--------------|-----------|
| P/N: | | |
| P/N: | CP-CE SERIES | |
| Date: | | 30-Jun-17 |