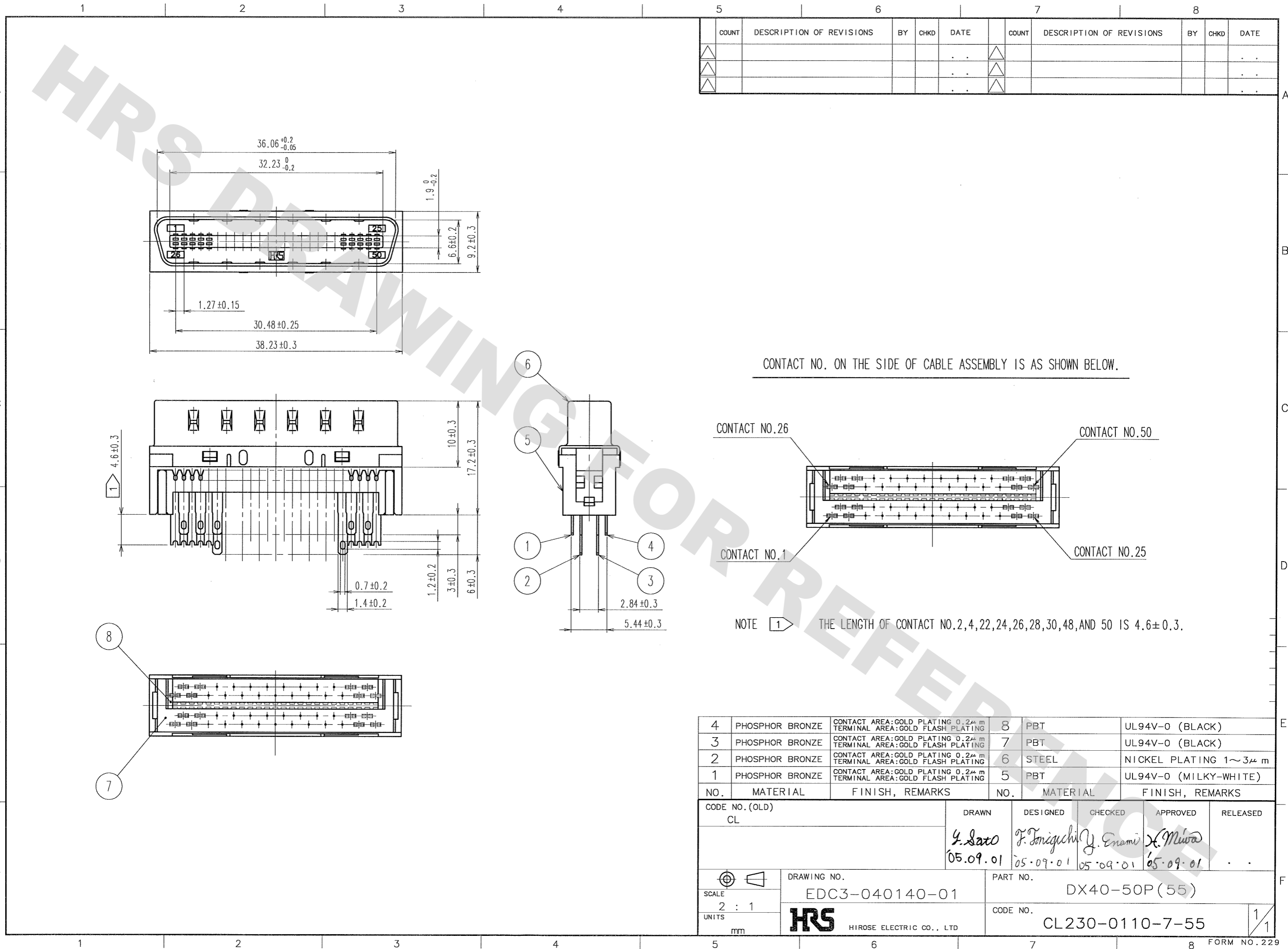
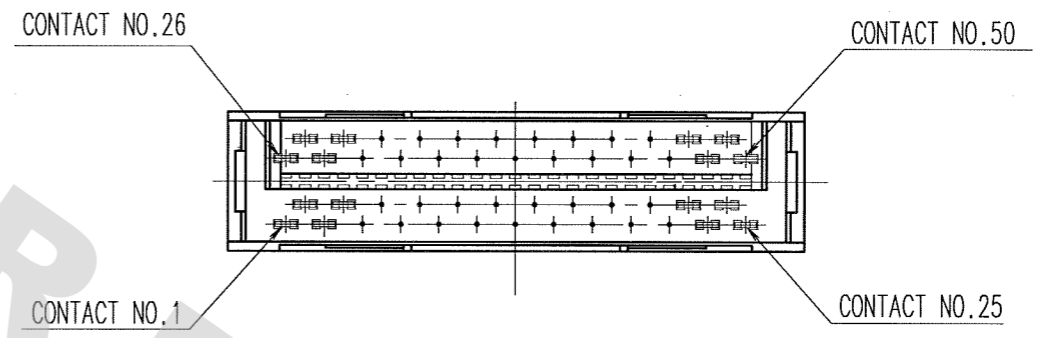


DRAWING FOR REFERENCE: This is subject to change without notice
08/11/2012



COUNT	DESCRIPTION OF REVISIONS	BY	CHKD	DATE	COUNT	DESCRIPTION OF REVISIONS	BY	CHKD	DATE
△					△				
△					△				
△					△				

CONTACT NO. ON THE SIDE OF CABLE ASSEMBLY IS AS SHOWN BELOW.



NOTE 1 THE LENGTH OF CONTACT NO. 2, 4, 22, 24, 26, 28, 30, 48, AND 50 IS 4.6 ± 0.3.

NO.	MATERIAL	FINISH, REMARKS	NO.	MATERIAL	FINISH, REMARKS
4	PHOSPHOR BRONZE	CONTACT AREA: GOLD PLATING 0.2μm TERMINAL AREA: GOLD FLASH PLATING	8	PBT	UL94V-0 (BLACK)
3	PHOSPHOR BRONZE	CONTACT AREA: GOLD PLATING 0.2μm TERMINAL AREA: GOLD FLASH PLATING	7	PBT	UL94V-0 (BLACK)
2	PHOSPHOR BRONZE	CONTACT AREA: GOLD PLATING 0.2μm TERMINAL AREA: GOLD FLASH PLATING	6	STEEL	NICKEL PLATING 1~3μm
1	PHOSPHOR BRONZE	CONTACT AREA: GOLD PLATING 0.2μm TERMINAL AREA: GOLD FLASH PLATING	5	PBT	UL94V-0 (MILKY-WHITE)

CODE NO. (OLD) CL	DRAWN Y. Sato 05.09.01	DESIGNED T. Toniguchi 05.09.01	CHECKED Y. Enami 05.09.01	APPROVED X. Miwa 05.09.01	RELEASED
SCALE 2 : 1 UNITS mm	DRAWING NO. EDC3-040140-01		PART NO. DX40-50P(55)		
	HRS HIROSE ELECTRIC CO., LTD		CODE NO. CL230-0110-7-55		

TO
Q1