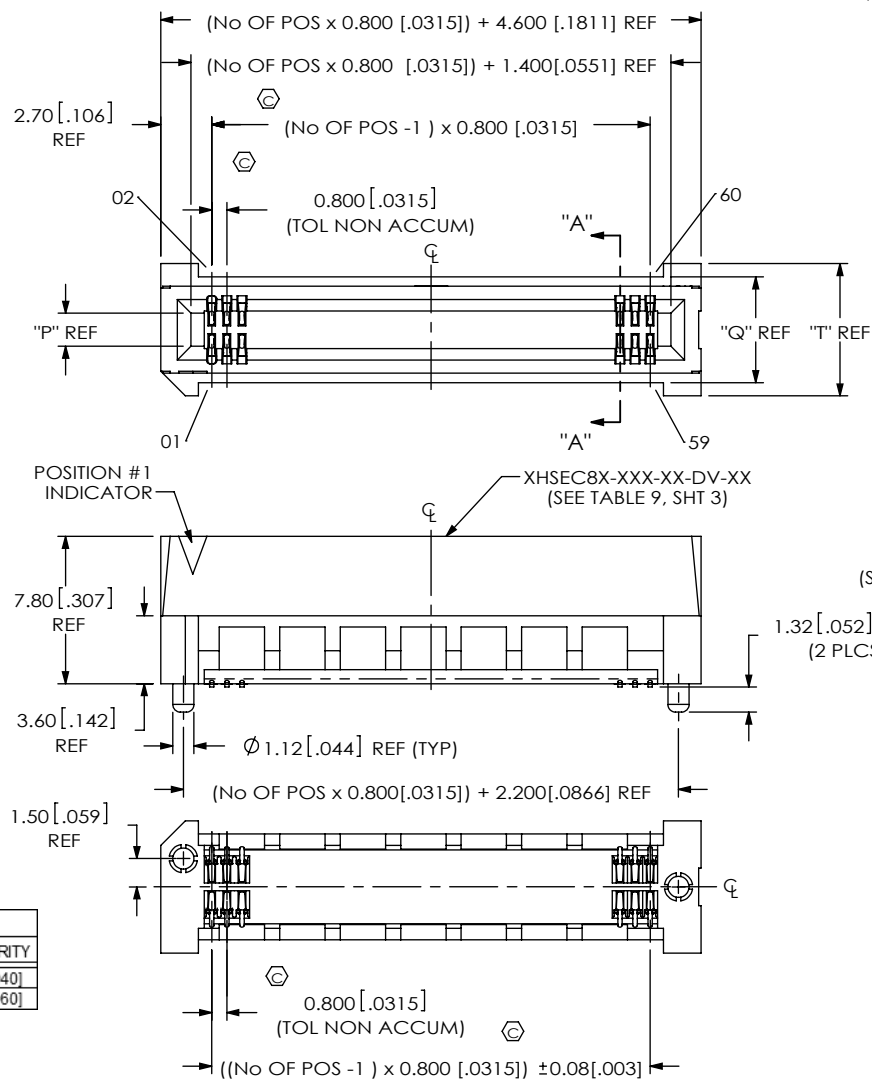


DO NOT
SCALE FROM
THIS PRINTDESIGNED & DIMENSIONED
IN MILLIMETERS
(INCHES FOR REFERENCE ONLY)FIG 1
FOR POSITIONS -10, -20 & -30
HSEC8-130-01-XX-DV-A SHOWN
(SOME FEATURES NOT SHOWN FOR CLARITY)

NOTES:

1. Ⓢ REPRESENTS A CRITICAL DIMENSION.
2. BURR ALLOWANCE: 0.04 [.0015] MAX.
3. MINIMUM PUSHOUT FORCE: 2.2 NEWTONS.
4. ALL TAIL TO TAIL DIMENSIONS MEASURED TIP TO TIP.
5. ASSEMBLIES TO BE PACKAGED IN TRAYS, UNLESS -TR IS SPECIFIED.
6. NOTE DELETED.
7. MATING EDGE CARD THICKNESS TOLERANCE TO BE ±10% OF NOMINAL.
8. NOTE DELETED.
9. NOTE DELETED.
10. MATING CARD MUST HAVE LEAD-IN. SEE SAMTEC FOOTPRINT FOR SPECIFICATIONS.
11. L, L2, & BL IS NOT APPLICABLE FOR GUIDE RAIL TYPE USE. GR NOT APPLICABLE FOR L, L2, OR BL TYPE USE.

HSEC8-1XXX-XX-XX-DV-X-XX

NO OF POSITIONS
-10, -20, -30 (PER ROW, SEE FIG 1)
-09, -13, -25, -37, -49, -40, -50, -60, -70, -80, -90, -100 (PER ROW, SEE FIG 2, SHT 2)

CARD THICKNESS
(SEE TABLE 9, SHT 3)
-01: 1.57 [.062] CARD
-02: 2.00 [.079] CARD
(10-60 POS, MULTIPLES OF 10 ONLY)
(-K & -TR ONLY FOR OPTION 2)
(USE HSEC8A-XXX-02-DV-XX)
-03: 2.36 [.093] CARD
(10-60 POS, MULTIPLES OF 10 ONLY)
(-K & -TR ONLY FOR OPTION 2)
(USE HSEC8A-XXX-03-DV-XX)
(SEE NOTE 7 & 10)
*-04: 3.18 [.125] CARD
(10-60 POS, MULTIPLES OF 10 ONLY)
(-K & -TR ONLY FOR OPTION 2)
(USE HSEC8A-XXX-04-DV-XX)

PLATING SPECIFICATION

-SM: 30μ" SELECTIVE GOLD IN CONTACT AREA, MATTE TIN ON TAIL
-H: 30μ" HEAVY GOLD IN CONTACT AREA, 3μ" GOLD TAIL
-S: 30μ" SELECTIVE GOLD IN CONTACT AREA, MATTE TIN ON TAIL
-L: 10μ" LIGHT SELECTIVE GOLD IN CONTACT AREA, MATTE TIN ON TAIL

OPTION 2

-K: POLYIMIDE FILM PAD (SEE SHT 2, FIG 3)
-TR: TAPE & REEL
(09 THRU 70 POS ONLY)
(LEAVE BLANK FOR TRAY)
-L: LATCHING (SHT 4, FIG 4)
(13, 25, 37, & 49 POS ONLY) (SEE NOTE 11)
*-L2: ECDP LATCHING (SHT 8, FIG 9)
(09, 13, 25, & 49 POS ONLY) (SEE NOTE 11)
-BL: BOARD LOCK (SHT 5, FIG 5) (SEE NOTE 11)
-GR: GUIDE RAILS (SHT 6, FIG 6)
(10-60 POS, MULTIPLES OF 10 ONLY) (SEE NOTE 11)
(-TR PACKAGING ONLY)
-PE: PASS THROUGH (SHT 7, FIG 7)
(10, 13, & 20 POS ONLY)
(-A OPTION ONLY)
(NOT AVAILABLE WITH ANY OTHER OPTION 2, EXCEPT -K AND/OR -TR)
-WT: WELD TAB (SHT 7, FIG 8)
(-A OPTION ONLY)

OPTION 1

-A: ALIGNMENT PIN
(USE XHSEC8X-XXX-XX-DV-A)
(LEAVE BLANK FOR NO ALIGNMENT PIN, USE XHSEC8-XXX-01-DV-LC, NOT AVAILABLE FOR CARD THICKNESS -02, -03, OR -04, SEE FIG 10, SHT 3)

ROW SPECIFICATION

* = NOT RELEASED

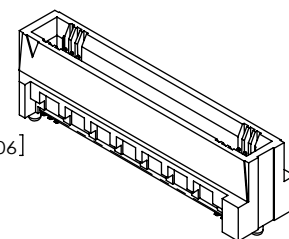
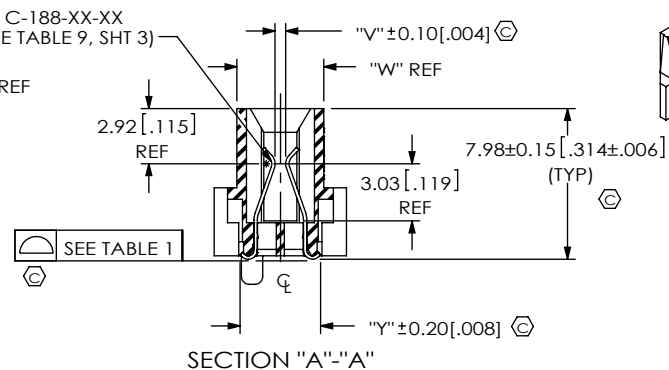
C-188-XX-XX
(SEE TABLE 9, SHT 3)1.32 [.052] REF
(2 PLCS)

TABLE 5

CARD THICKNESS	No OF POSITIONS	"P"	"Q"	"T"	"V"	"W"	"Y"
-01	-09 THRU -37 -40 THRU -100	1.75 [.070]	5.60 [.220]	7.00 [.280]	0.55 [.022]	4.60 [.180] 5.20 [.205]	4.25 [.167]
-02	ALL APPLICABLE	2.18 [.086]	6.03 [.237]	7.43 [.293]	0.98 [.038]	5.03 [.198]	4.68 [.184]
-03	ALL APPLICABLE	2.54 [.100]	6.39 [.252]	7.79 [.307]	1.34 [.053]	5.39 [.212]	5.04 [.198]
*-04	ALL APPLICABLE	3.36 [.132]	7.21 [.284]	8.61 [.339]	2.16 [.085]	6.21 [.244]	5.86 [.230]

* = NOT RELEASED FOR PRODUCTION

F:\DWG\MISC\MTG\HSEC8-1XXX-XX-XX-DV-X-XX-MKT.SLDDRW

UNLESS OTHERWISE SPECIFIED,
DIMENSIONS ARE IN MILLIMETERS.

TOLERANCES ARE:

DECIMALS ANGLES
.X: ± .3 [.01]
.XX: ± .13 [.005]
.XXX: ± .05 [.0020]

PROPRIETARY NOTE

THIS DOCUMENT CONTAINS INFORMATION
CONFIDENTIAL AND PROPRIETARY TO
SAMTEC, INC. AND SHALL NOT BE REPRODUCED
OR TRANSFERRED TO OTHER DOCUMENTS OR
DISCLOSED TO OTHERS OR USED FOR ANY
PURPOSE OTHER THAN THAT WHICH IT WAS
OBTAINED WITHOUT THE EXPRESSED WRITTEN
CONSENT OF SAMTEC, INC.

MATERIAL: DO NOT SCALE DRAWING SHEET SCALE: 2.5:1
INSULATOR: LCP,
COLOR: -01 CARD THICKNESS BLACK,
-02 THRU -04 CARD THICKNESS NATURAL
CONTACT: BeCu

DESCRIPTION:
0.8mm HIGH SPEED EDGE CARD ASSEMBLY

DWG. NO.

HSEC8-1XXX-XX-XX-DV-X-XX

BY: BRATCHER 01/24/03

SHEET 1 OF 8

520 PARK EAST BLVD, NEW ALBANY, IN 47150
PHONE: 812-944-6733 FAX: 812-948-5047
e-Mail: info@SAMTEC.com code: 55322

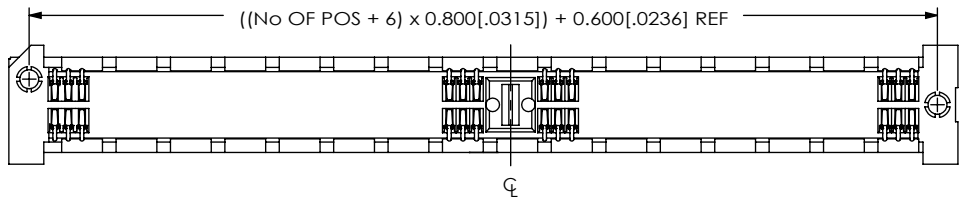
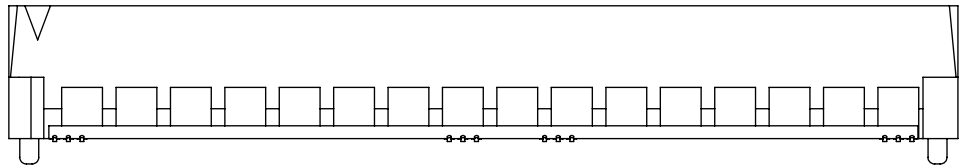
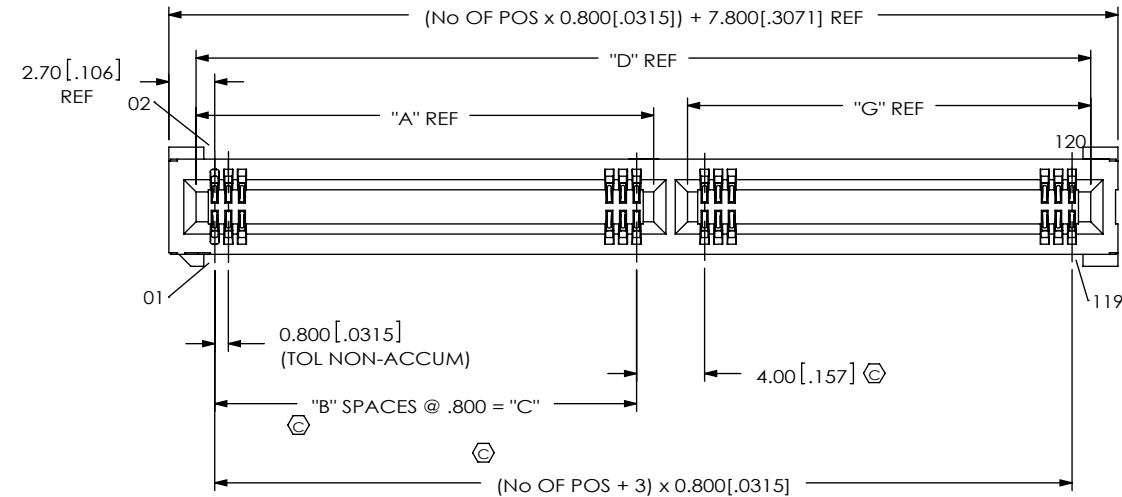


TABLE 2					
No OF POS	"A"	"B"	"C"	"D"	"G"
** -13	6.10[.240]	5	4.000[.1575]	15.00[.591]	6.90[.272]
** -25	6.10[.240]	5	4.000[.1575]	24.60[.969]	16.50[.650]
** -37	18.10[.713]	20	16.000[.6299]	34.20[1.346]	14.10[.555]
-40	18.90[.744]	21	16.800[.6614]	36.60[1.441]	15.70[.618]
** -49	22.90[.902]	26	20.800[.8189]	43.80[1.724]	18.90[.744]
-50	22.90[.902]	26	20.800[.8189]	44.60[1.756]	19.70[.776]
-60	26.90[1.059]	31	24.800[.9764]	52.60[2.071]	23.70[.933]
** -70	26.90[1.059]	31	24.800[.9764]	60.60[2.386]	31.70[1.248]
** -80	26.90[1.059]	31	24.800[.9764]	68.60[2.701]	39.70[1.563]
** -90	26.90[1.059]	31	24.800[.9764]	76.60[3.016]	47.70[1.878]
** -100	26.90[1.059]	31	24.800[.9764]	84.60[3.331]	55.70[2.193]

** = AVAILABLE ONLY WITH -01 CARD THICKNESS

FIG 2
FOR POSITIONS **13, **25, **37,
-40, **49, -50, -60, **70, **80, **90, **100
HSEC8-160-01-XX-DV-A SHOWN
(DIFFERENT AS SHOWN, OTHERWISE SAME AS FIG 1)
(SOME FEATURES NOT SHOWN FOR CLARITY)
(** = AVAILABLE ONLY WITH
-01 CARD THICKNESS)

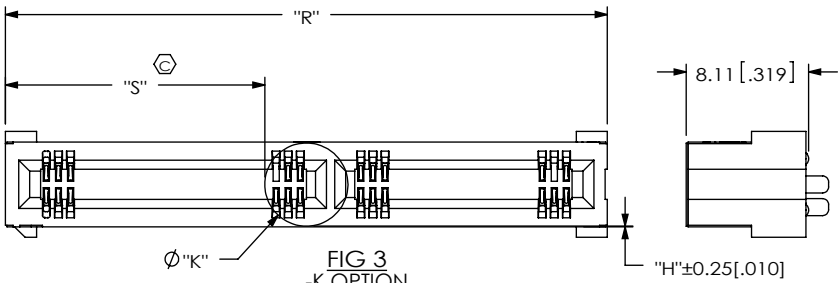
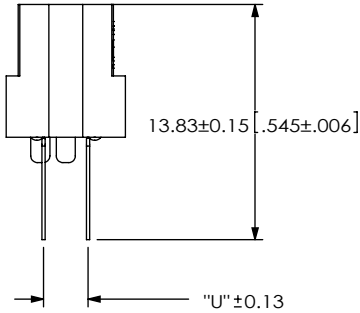


TABLE 3				
OPTION 2	No OF POS	"R"	"S"	
NONE	-10 THRU -30	(No OF POS x 0.800[.0315]) + 4.600[.1811] REF	(("R" - "K") / 2) +/-0.51[.020]	
	-13, -25, -37, -40 THRU -100	(No OF POS x 0.800[.0315]) + 7.800[.3071] REF		
**-WT	-10 THRU -30	(No OF POS x 0.800[.0315]) + 9.200[.3622] REF		
	-13, -25, -37, -40 THRU -100	(No OF POS x 0.800[.0315]) + 12.400[.4882] REF		
**-L	-13, -25, -37, & -49	(No OF POS x 0.800[.0315]) + 18.400[.7244] REF		
	-10 THRU -30	(No OF POS x 0.800[.0315]) + 15.850[.6240] REF		
**-BL	-13, -25, -37, -40 THRU -100	(No OF POS x 0.800[.0315]) + 19.050[.7500] REF		
	-10, -13, & -20	(No OF POS x 0.800[.0315]) + 7.000[.2756] REF		
**-PE	-10, -20, -30	(No OF POS x 0.800[.0315]) + 4.600[.1811] REF		
	-40, -50, -60	(No OF POS x 0.800[.0315]) + 7.800[.3071] REF		
**L2	-09, -13, -25, -49	(No OF POS x 0.800[.0315]) + 11.800[.4646] REF		
= AVAILABLE ONLY WITH -01 CARD THICKNESS				
= NOT RELEASED FOR PRODUCTION				

TABLE 6				
CARD THICKNESS	No OF POS	KAPTON TYPE "K"	"U"	"H"
-01	-09 THRU -37	K-DOT-217-313-005	2.61[.103]	0.45[.018]
	-40 THRU -100			-0.04[.002]
-02	ALL APPLICABLE	K-DOT-217-313-005	3.04[.120]	0.24[.009]
-03	ALL APPLICABLE	K-DOT-246-375-005	3.40[.134]	0.43[.017]
*-04	ALL APPLICABLE	K-DOT-246-375-005	4.22[.166]	0.40[.016]

* = NOT RELEASED FOR PRODUCTION



IN-PROCESS

PROPRIETARY NOTE

THIS DOCUMENT CONTAINS INFORMATION
CONFIDENTIAL AND PROPRIETARY TO
SAMTEC, INC. AND SHALL NOT BE REPRODUCED
OR TRANSFERRED TO OTHER DOCUMENTS OR
DISCLOSED TO OTHERS OR USED FOR ANY
PURPOSE OTHER THAN THAT WHICH IT WAS
OBTAINED WITHOUT THE EXPRESSED WRITTEN
CONSENT OF SAMTEC, INC.

DO NOT SCALE DRAWING

SHEET SCALE: 2.25:1

samtec

520 PARK EAST BLVD, NEW ALBANY, IN 47150
PHONE: 812-944-6733 FAX: 812-948-5047
e-Mail: info@SAMTEC.com code: 55322

DESCRIPTION:
0.8mm HIGH SPEED EDGE CARD ASSEMBLY

DWG. NO.
HSEC8-1XXX-XX-XX-DV-X-XX

BY: BRATCHER 01/24/03 SHEET 2 OF 8

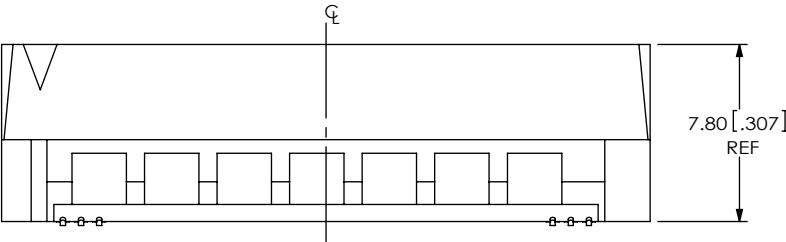


FIG 10
 **NON-ALIGNMENT PIN OPTION
 HSEC8-130-01-XX-DV-LC SHOWN
 (DIFFERENT AS SHOWN, OTHERWISE SAME AS FIG 1)
 (** = AVAILABLE ONLY WITH -01 CARD THICKNESS)
 (SOME FEATURES NOT SHOWN FOR CLARITY)

TABLE 9				
CARD	OPTION 2	POS	BODY	CONTACT
-01	-L	ALL APPLICABLE	HSEC8-XXX-01-DV-XX-L	C-188-01-X
	*-L2	ALL APPLICABLE	HSEC8-XXX-01-DV-XX-L2	C-188-01-X
	-BL	ALL APPLICABLE	HSEC8-XXX-01-DV-XX-BL	C-188-01-X
	-GR	ALL APPLICABLE	HSEC8-XXX-01-DV-XX-GR	C-188-01-X
	-PE	ALL APPLICABLE	HSEC8-XXX-01-DV-A-PE	C-188-01-X
	-WT	ALL APPLICABLE	HSEC8-XXX-01-DV-A-WT	C-188-01-X
	NONE	09 THRU 37	HSEC8-XXX-01-DV-XX	C-188-01-X
		40 THRU 100	RHSEC8-XXX-01-DV-XX	C-188-02-X
-02	NONE	ALL APPLICABLE	HSEC8A-XXX-02-DV-A	C-188-01-X
-03	NONE	ALL APPLICABLE	HSEC8A-XXX-03-DV-A	C-188-01-X
*-04	NONE	ALL APPLICABLE	HSEC8A-XXX-04-DV-A	C-188-01-X

* = NOT RELEASED FOR PRODUCTION

PROPRIETARY NOTE
 THIS DOCUMENT CONTAINS INFORMATION
 CONFIDENTIAL AND PROPRIETARY TO
 SAMTEC, INC. AND SHALL NOT BE REPRODUCED
 OR TRANSFERRED TO OTHER DOCUMENTS OR
 DISCLOSED TO OTHERS OR USED FOR ANY
 PURPOSE OTHER THAN THAT WHICH IT WAS
 OBTAINED WITHOUT THE EXPRESSED WRITTEN
 CONSENT OF SAMTEC, INC.

DO NOT SCALE DRAWING

SHEET SCALE: 2:1

520 PARK EAST BLVD, NEW ALBANY, IN 47150
 PHONE: 812-944-6733 FAX: 812-948-5047
 e-Mail: info@SAMTEC.com code 55322

DESCRIPTION:
 0.8mm HIGH SPEED EDGE CARD ASSEMBLY
 DWG. NO.
HSEC8-1XXX-XX-XX-DV-X-XX
 BY: BRATCHER 01/24/03 SHEET 3 OF 8

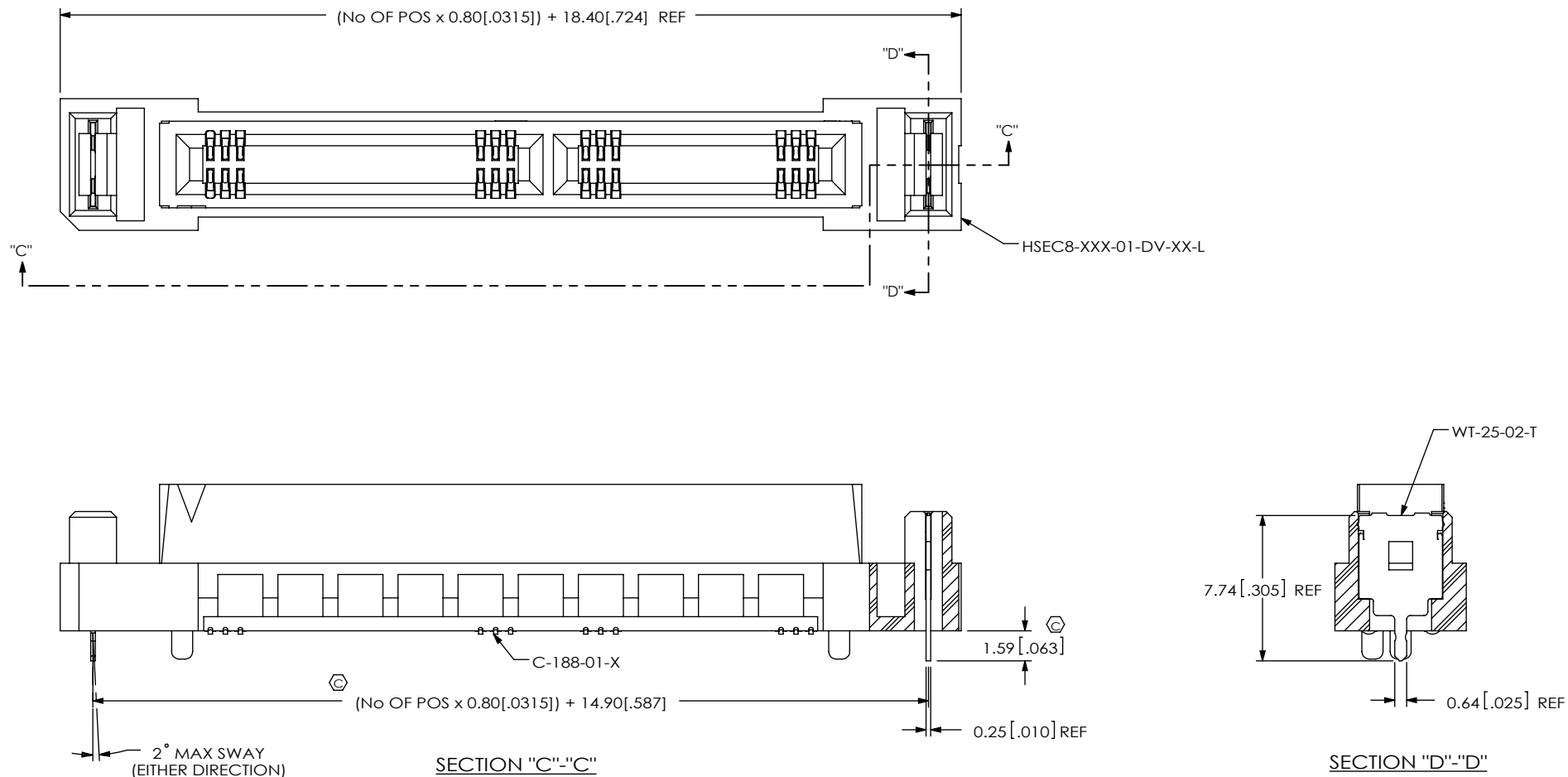


FIG 4
****L: LATCHING OPTION**
 HSEC8-137-01-XX-DV-A-L SHOWN
 AVAILABLE IN -13, -25, -37 & -49 POSITIONS ONLY
 (NOT AVAILABLE FOR -GR TYPE USE)
 (DIFFERENT AS SHOWN, OTHERWISE SAME AS FIG 2)
 (SOME FEATURES NOT SHOWN FOR CLARITY)
 (** = AVAILABLE ONLY WITH -01 CARD THICKNESS)

PROPRIETARY NOTE

THIS DOCUMENT CONTAINS INFORMATION
 CONFIDENTIAL AND PROPRIETARY TO
 SAMTEC, INC. AND SHALL NOT BE REPRODUCED
 OR TRANSFERRED TO OTHER DOCUMENTS OR
 DISCLOSED TO OTHERS OR USED FOR ANY
 PURPOSE OTHER THAN THAT WHICH IT WAS
 OBTAINED WITHOUT THE EXPRESSED WRITTEN
 CONSENT OF SAMTEC, INC.

DO NOT SCALE DRAWING

SHEET SCALE: 3:1

samtec

520 PARK EAST BLVD, NEW ALBANY, IN 47150
 PHONE: 812-944-6733 FAX: 812-948-5047
 e-Mail: info@SAMTEC.com code: 55322

DESCRIPTION:
 0.8mm HIGH SPEED EDGE CARD ASSEMBLY

DWG. NO.
HSEC8-1XXX-XX-XX-DV-X-XX

BY: BRATCHER 01/24/03 SHEET 4 OF 8

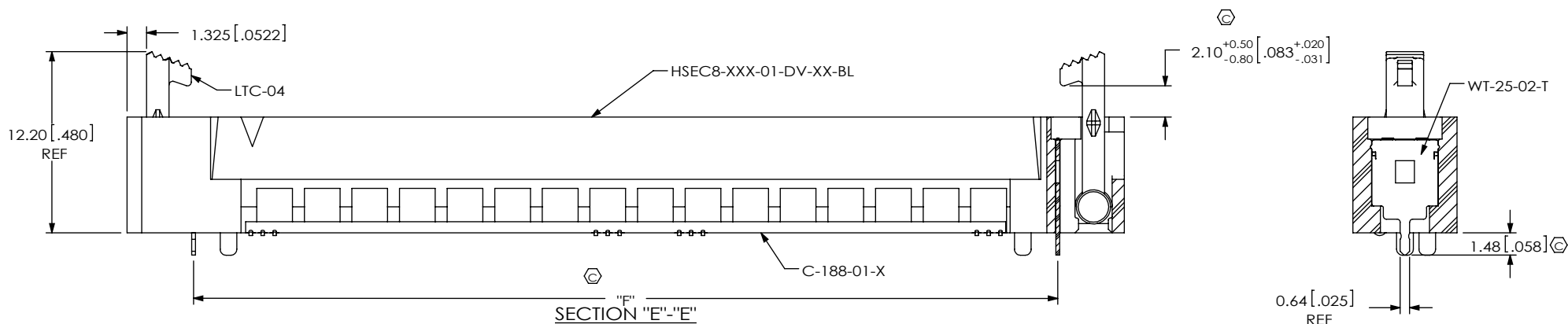
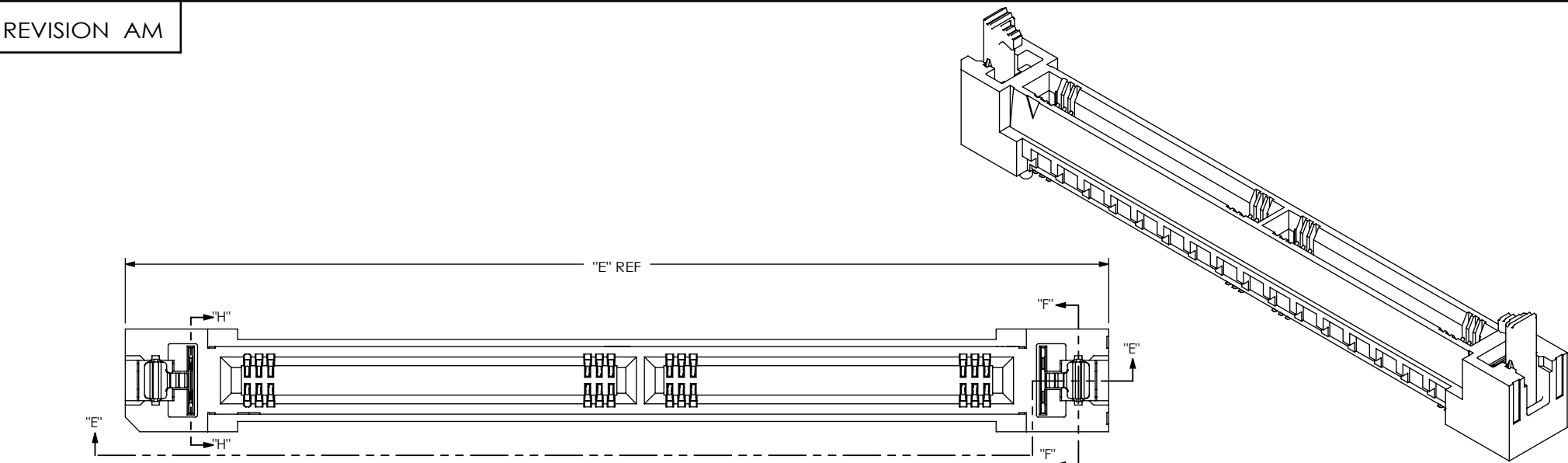
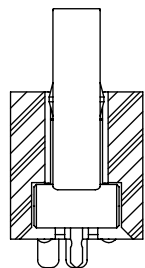


FIG 5

**BL: BOARD LOCK OPTION
HSEC8-160-01-XX-DV-A-BL SHOWN
(NOT AVAILABLE FOR -GR TYPE USE)

(DIFFERENT AS SHOWN, OTHERWISE SAME AS FIG 4)
(** = AVAILABLE ONLY WITH -01 CARD THICKNESS)
(SOME FEATURES NOT SHOWN FOR CLARITY)



SECTION "F"-"F"

TABLE 4		
No OF POSITIONS	"E"	"F"
-10	23.85 [0.939]	14.90 [0.587]
**13	29.45 [1.159]	20.50 [0.807]
-20	31.85 [1.254]	22.90 [0.902]
**25	39.05 [1.537]	30.10 [1.185]
-30	39.85 [1.569]	30.90 [1.217]
**37	48.65 [1.915]	39.70 [1.563]
-40	51.05 [2.010]	42.10 [1.657]
**49	58.25 [2.293]	49.30 [1.941]
-50	59.05 [2.325]	50.10 [1.972]
-60	67.05 [2.640]	58.10 [2.287]
**70	75.05 [2.955]	66.10 [2.602]
**80	83.05 [3.270]	74.10 [2.917]
**90	91.05 [3.585]	82.10 [3.232]
**100	99.05 [3.900]	90.10 [3.547]

** = AVAILABLE ONLY WITH -01 CARD THICKNESS

PROPRIETARY NOTE

THIS DOCUMENT CONTAINS INFORMATION
CONFIDENTIAL AND PROPRIETARY TO
SAMTEC, INC. AND SHALL NOT BE REPRODUCED
OR TRANSFERRED TO OTHER DOCUMENTS OR
DISCLOSED TO OTHERS OR USED FOR ANY
PURPOSE OTHER THAN THAT WHICH IT WAS
OBTAINED WITHOUT THE EXPRESSED WRITTEN
CONSENT OF SAMTEC, INC.

DO NOT SCALE DRAWING

SHEET SCALE: 2.5:1

samtec

520 PARK EAST BLVD, NEW ALBANY, IN 47150
PHONE: 812-944-6733 FAX: 812-948-5047
e-Mail: info@SAMTEC.com code: 55322

DESCRIPTION:
0.8mm HIGH SPEED EDGE CARD ASSEMBLY

DWG. NO.
HSEC8-1XXX-XX-XX-DV-X-XX

BY: BRATCHER 01/24/03

SHEET 5 OF 8

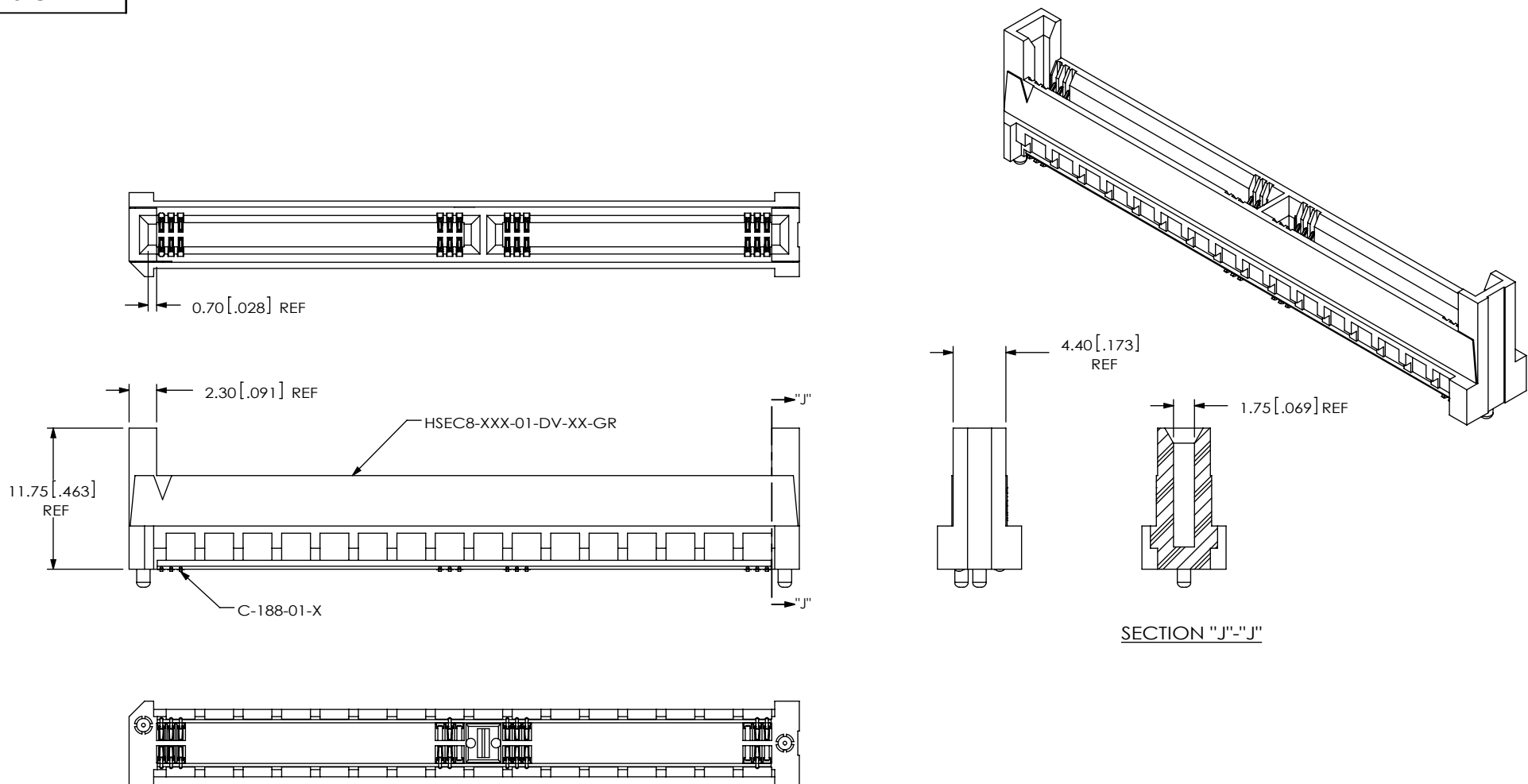



FIG 6
**-GR: GUIDE RAILS OPTION
HSEC8-160-01-XX-DV-A-GR SHOWN
AVAILABLE IN -10, -20, -30, -40, -50, & -60 POSITIONS ONLY
(NOT AVAILABLE FOR -L; -BL TYPE USE)
(DIFFERENT AS SHOWN, OTHERWISE SAME AS FIG 2)
(SOME FEATURES NOT SHOWN FOR CLARITY)
(** = AVAILABLE ONLY WITH -01 CARD THICKNESS)

<p>PROPRIETARY NOTE</p> <p>THIS DOCUMENT CONTAINS INFORMATION CONFIDENTIAL AND PROPRIETARY TO SAMTEC, INC. AND SHALL NOT BE REPRODUCED OR TRANSFERRED TO OTHER DOCUMENTS OR DISCLOSED TO OTHERS OR USED FOR ANY PURPOSE OTHER THAN THAT WHICH IT WAS OBTAINED WITHOUT THE EXPRESSED WRITTEN CONSENT OF SAMTEC, INC.</p> <p>DO NOT SCALE DRAWING</p> <p>SHEET SCALE: 2:1</p>		
	520 PARK EAST BLVD, NEW ALBANY, IN 47150 PHONE: 812-944-6733 FAX: 812-948-5047 e-Mail: info@SAMTEC.com code: 55322	
	DESCRIPTION: 0.8mm HIGH SPEED EDGE CARD ASSEMBLY	
	DWG. NO. HSEC8-1XXX-XX-XX-DV-X-XX	
BY: BRATCHER 01/24/03		SHEET 6 OF 8

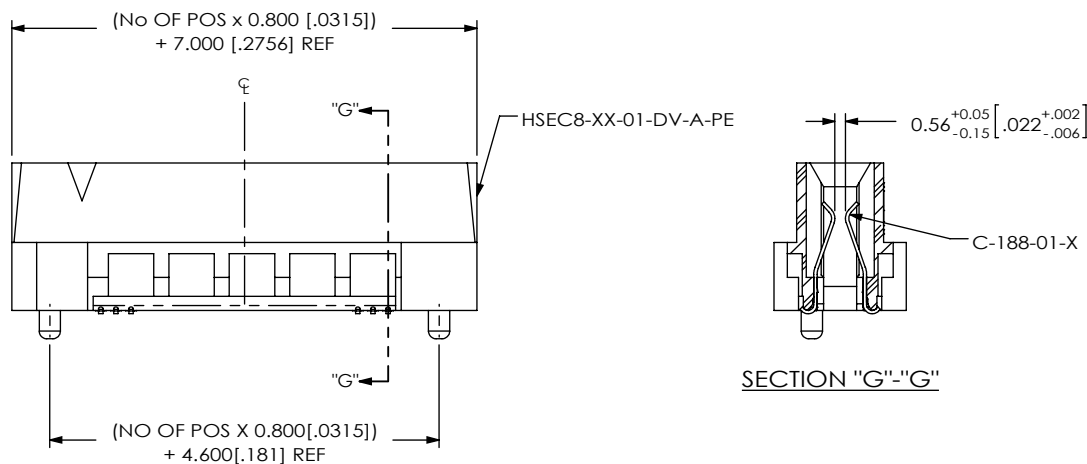


FIG 7
**-PE: PASS THROUGH OPTION
HSEC8-120-01-XX-DV-A-PE SHOWN
AVAILABLE IN -10, -13 & -20 POSITIONS ONLY
(DIFFERENT AS SHOWN, OTHERWISE SAME AS FIG 1)
(SOME FEATURES NOT SHOWN FOR CLARITY)
** = AVAILABLE ONLY WITH -01 CARD THICKNESS

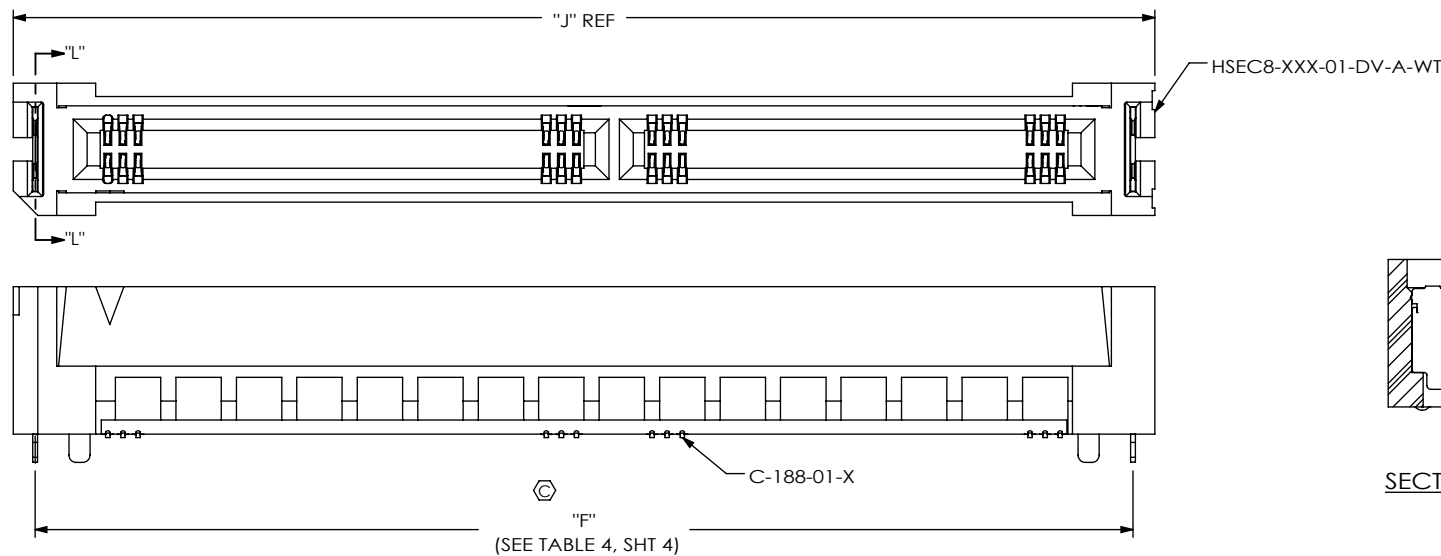


FIG 8
-WT: WELD TAB OPTION
HSEC8-160-01-XX-DV-A-WT SHOWN
AVAILABLE IN ALL POSITIONS
(-A OPTION REQUIRED)
(DIFFERENT AS SHOWN, OTHERWISE SAME AS FIG 4)
(SOME FEATURES NOT SHOWN FOR CLARITY)

TABLE 7	
No OF POSITIONS	"J"
-10	17.20 [0.677]
**13	22.80 [0.898]
-20	25.20 [0.992]
**25	32.40 [1.276]
-30	33.20 [1.307]
**37	42.00 [1.654]
-40	44.40 [1.748]
**49	51.60 [2.031]
-50	52.40 [2.063]
-60	60.40 [2.378]
**70	68.40 [2.693]
**80	76.40 [3.008]
**90	84.40 [3.323]
**100	92.40 [3.638]

** = AVAILABLE ONLY WITH -01 CARD THICKNESS

PROPRIETARY NOTE
THIS DOCUMENT CONTAINS INFORMATION
CONFIDENTIAL AND PROPRIETARY TO
SAMTEC, INC. AND SHALL NOT BE REPRODUCED
OR TRANSFERRED TO OTHER DOCUMENTS OR
DISCLOSED TO OTHERS OR USED FOR ANY
PURPOSE OTHER THAN THAT WHICH IT WAS
OBTAINED WITHOUT THE EXPRESSED WRITTEN
CONSENT OF SAMTEC, INC.

DO NOT SCALE DRAWING

SHEET SCALE: 2.5:1

520 PARK EAST BLVD, NEW ALBANY, IN 47150
PHONE: 812-944-6733 FAX: 812-948-5047
e-Mail info@SAMTEC.com code 55322

DESCRIPTION:
0.8mm HIGH SPEED EDGE CARD ASSEMBLY

DWG. NO.
HSEC8-1XXX-XX-XX-DV-X-XX

BY: BRATCHER 01/24/03

SHEET 7 OF 8

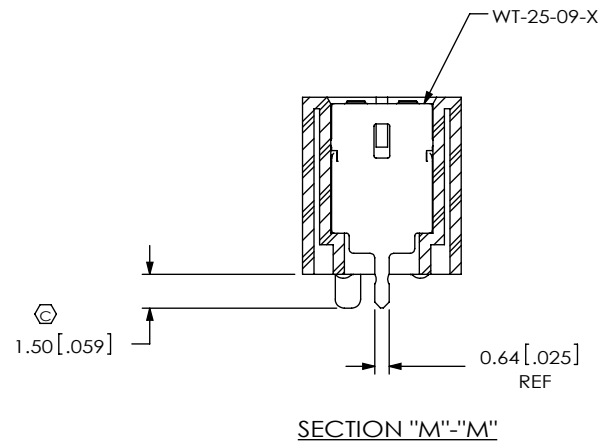
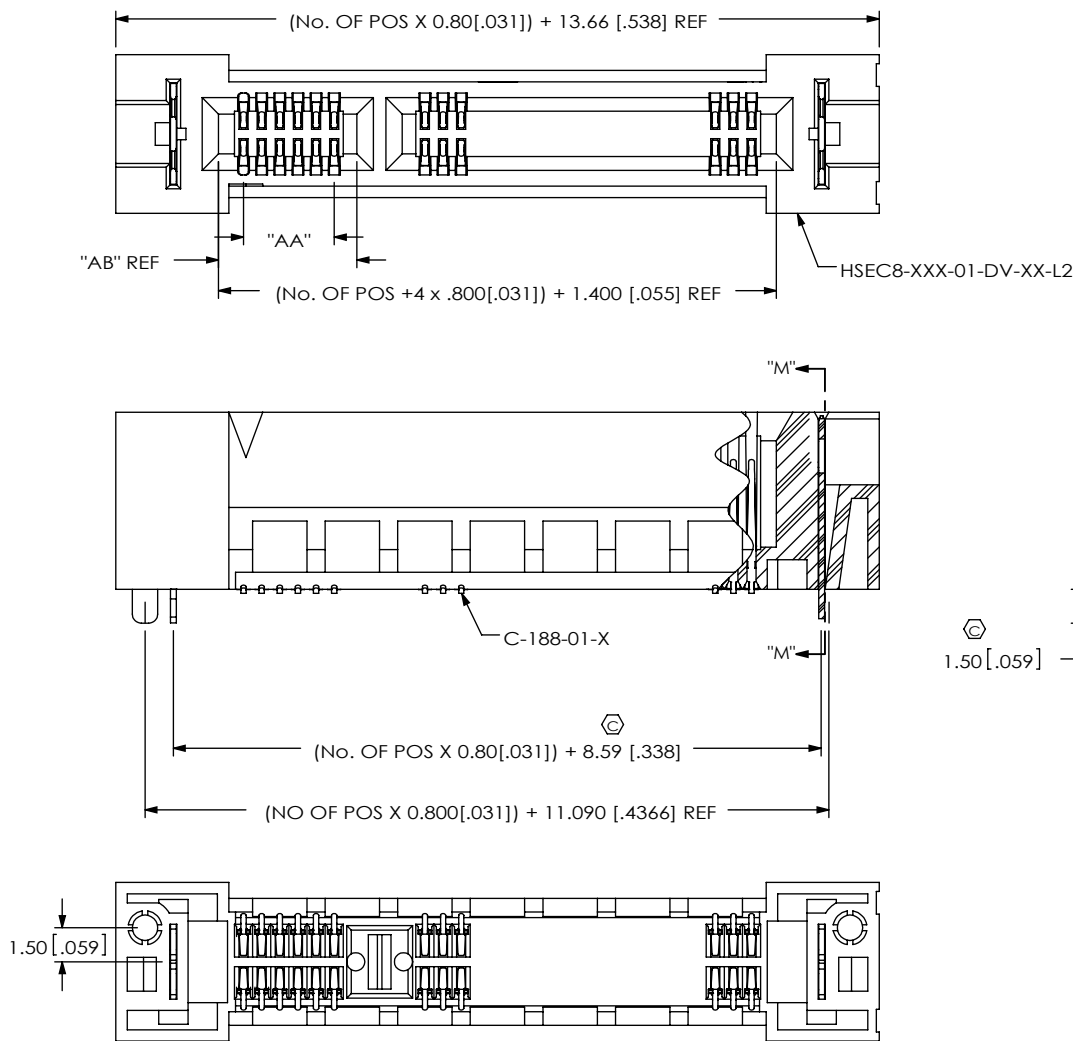


FIG 9
***L2: ECDP LATCHING OPTION
HSEC8-125-01-XX-DV-A-L2 SHOWN
(AVAILABLE IN 9, 13, 25, & 49 POS ONLY)
(NOT AVAILABLE FOR -GR TYPE USE)
(DIFFERENT AS SHOWN, OTHERWISE SAME AS FIG 4)
(SOME FEATURES NOT SHOWN FOR CLARITY)
(* = NOT RELEASED FOR PRODUCTION)
(** = AVAILABLE ONLY WITH -01 CARD THICKNESS)

TABLE 8		
No OF POSITIONS	"AA"	"AB"
-09	2.400 [0.0945]	4.500 [0.1772]
-13	4.000 [0.1575]	6.100 [0.2402]
-25	4.000 [0.1575]	6.100 [0.2402]
-49	20.800 [0.8189]	22.900 [0.9016]

F:\DWG\MISC\MKTG\HSEC8-1XXX-XX-XX-DV-X-XX-MKT.SLDDRW

PROPRIETARY NOTE

THIS DOCUMENT CONTAINS INFORMATION
CONFIDENTIAL AND PROPRIETARY TO
SAMTEC, INC. AND SHALL NOT BE REPRODUCED
OR TRANSFERRED TO OTHER DOCUMENTS OR
DISCLOSED TO OTHERS OR USED FOR ANY
PURPOSE OTHER THAN THAT WHICH IT WAS
OBTAINED WITHOUT THE EXPRESSED WRITTEN
CONSENT OF SAMTEC, INC.

DO NOT SCALE DRAWING

SHEET SCALE: 3:1

samtec

520 PARK EAST BLVD, NEW ALBANY, IN 47150
PHONE: 812-944-6733 FAX: 812-948-5047
e-Mail info@SAMTEC.com code 55322

DESCRIPTION:
0.8mm HIGH SPEED EDGE CARD ASSEMBLY

DWG. NO.
HSEC8-1XXX-XX-XX-DV-X-XX

BY: BRATCHER 01/24/03 SHEET 8 OF 8