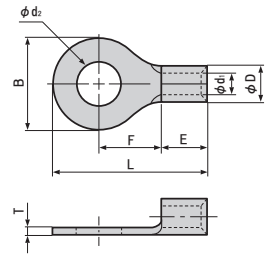


裸圧着端子 丸形 (R形) 1.25~8

裸圧着端子 丸形 (R形) 1.25~8



■仕様
●材質:無酸素銅

UL E42024 LR20812 JIS JQ0608019 / JQID08002 / JQMY14001 / JIS C 2805

商品コード	品番	規格	寸法 (mm)							適用電線範囲	標準単価	梱包	出荷単位																																																																																																																																																																																																																																																																																																																																																																																																																																																																																																																																																																																																																																																																																																																																																																																																																																																																																																																																																																																																																																																																																																							
			φd ₂	B	L	F	E	φD	φd ₁					T																																																																																																																																																																																																																																																																																																																																																																																																																																																																																																																																																																																																																																																																																																																																																																																																																																																																																																																																																																																																																																																																																																						
690-350-01100	R 1.25-3 JP	UL LISTED SF JIS	3.2	5.5	11.5	4.0	4.8	3.4	1.7	0.8	単線:0.57~1.44mm より線:0.25~1.65mm AWG:#22~#16	1,000個 (10箱)	100個 (1箱)																																																																																																																																																																																																																																																																																																																																																																																																																																																																																																																																																																																																																																																																																																																																																																																																																																																																																																																																																																																																																																																																																																							
690-350-01110	1.25-MS3 JP	UL LISTED SF			13.2	5.6								690-350-01120	1.25-3.7 JP	UL LISTED SF	3.7	5.5	11.5	4.0	4.8	4.1	2.3	0.8	単線:1.14~1.82mm より線:1.04~2.63mm AWG:#16~#14	1,000個 (10箱)	100個 (1箱)	690-350-01130	R 1.25-3.5 JP	UL LISTED SF JIS	6.6	14.4	6.3	690-350-01140	R 1.25-4 JP	UL LISTED SF JIS	4.3	8.0	15.8	7.0	4.8	4.8	2.7	1.0	単線:— より線:3.5mm AWG:#12	1,000個 (10箱)	100個 (1箱)	690-350-01150	1.25-M4 JP	UL LISTED SF	6.6	14.4	6.3	690-350-01160	R 1.25-5 JP	UL LISTED SF JIS	5.3	8.0	15.8	7.0	6.8	5.6	3.4	1.0	単線:1.82~2.89mm より線:2.63~6.64mm AWG:#12~#10	1,000個 (10箱)	100個 (1箱)	690-350-01170	1.25-6 JP	UL LISTED SF	6.4	11.6	21.7	11.1	690-350-01180	1.25-8 JP	UL LISTED SF	8.4	12.0	21.8	11.0	6.8	7.1	4.5	1.2	単線:2.89~3.65mm より線:6.64~10.52mm AWG:#8	3,500個 (35箱)	100個 (1箱)	690-350-01190	2-MS3 JP	UL LISTED SF	3.2	5.5	13.2	5.6	690-350-01200	2-3 JP	UL LISTED SF	3.7	6.6	14.4	6.3	8.5	7.1	4.5	1.2	単線:2.89~3.65mm より線:6.64~10.52mm AWG:#8	3,500個 (35箱)	100個 (1箱)	690-350-01210	R 2-3.5 JP	UL LISTED SF JIS	8.5	16.8	7.8	690-350-01220	R 2-4 JP	UL LISTED SF JIS	4.3	8.5	16.8	7.8	8.5	7.1	4.5	1.2	単線:2.89~3.65mm より線:6.64~10.52mm AWG:#8	3,500個 (35箱)	100個 (1箱)	690-350-01230	2-M4 JP	UL LISTED SF	6.6	14.4	6.3	690-350-01240	R 2-5 JP	UL LISTED SF JIS	5.3	9.5	16.8	7.8	8.5	7.1	4.5	1.2	単線:2.89~3.65mm より線:6.64~10.52mm AWG:#8	3,500個 (35箱)	100個 (1箱)	690-350-01250	2-M5 JP	UL LISTED SF	8.5	16.8	7.8	690-350-01260	R 2-6 JP	UL LISTED SF JIS	6.4	12.0	21.8	11.0	8.5	7.1	4.5	1.2	単線:2.89~3.65mm より線:6.64~10.52mm AWG:#8	3,500個 (35箱)	100個 (1箱)	690-350-01270	R 2-8 JP	UL LISTED SF JIS	8.4	12.0	21.8	11.0	690-350-01280	3.5-R4 JP	UL LISTED SF	4.3	8.0	17.8	9.0	8.5	7.1	4.5	1.2	単線:2.89~3.65mm より線:6.64~10.52mm AWG:#8	3,500個 (35箱)	100個 (1箱)	690-350-01290	3.5-R5 JP	UL LISTED SF	5.3	10.3	18.6	8.6	690-350-02900	3.5-5 JP	UL LISTED SF	6.4	10.3	18.6	8.6	8.5	7.1	4.5	1.2	単線:2.89~3.65mm より線:6.64~10.52mm AWG:#8	3,500個 (35箱)	100個 (1箱)	690-350-01300	3.5-6 JP	UL LISTED SF	9.5	19.8	8.3	6.8	690-350-01310	R 5.5-4 JP	UL LISTED SF JIS	4.3	7.2	15.7	5.9	8.5	7.1	4.5	1.2	単線:2.89~3.65mm より線:6.64~10.52mm AWG:#8	3,500個 (35箱)	100個 (1箱)	690-350-01320	5.5-S4 JP	UL LISTED SF	8.0	19.1	8.3	6.2	690-350-01330	5.5-4NS JP	UL LISTED SF	5.3	9.5	19.8	8.3	8.5	7.1	4.5	1.2	単線:2.89~3.65mm より線:6.64~10.52mm AWG:#8	3,500個 (35箱)	100個 (1箱)	690-350-01340	R 5.5-5 JP	UL LISTED SF JIS	8.0	19.1	8.3	690-350-01350	5.5-5NS JP	UL LISTED SF	6.4	12.0	25.8	13.0	8.5	7.1	4.5	1.2	単線:2.89~3.65mm より線:6.64~10.52mm AWG:#8	3,500個 (35箱)	100個 (1箱)	690-350-01360	R 5.5-6 JP	UL LISTED SF JIS	9.0	24.3	13.0	690-350-01370	5.5-6NS JP	UL LISTED SF	8.4	15.0	28.0	13.7	8.5	7.1	4.5	1.2	単線:2.89~3.65mm より線:6.64~10.52mm AWG:#8	3,500個 (35箱)	100個 (1箱)	690-350-01380	R 5.5-8 JP	UL LISTED SF JIS	13.2	22.4	9.0	690-350-01390	5.5-S8 JP	UL LISTED SF	10.5	15.0	28.0	13.7	8.5	7.1	4.5	1.2	単線:2.89~3.65mm より線:6.64~10.52mm AWG:#8	3,500個 (35箱)	100個 (1箱)	690-350-01400	R 5.5-10 JP	UL LISTED SF JIS	19.2	32.4	16.0	690-350-02910	5.5-12 JP	UL LISTED SF	4.3	8.0	21.8	9.3	8.5	7.1	4.5	1.2	単線:2.89~3.65mm より線:6.64~10.52mm AWG:#8	3,500個 (35箱)	100個 (1箱)	690-350-01410	8-4NS JP	UL LISTED SF	12.0	23.8	9.3	690-350-01420	8-4 JP	UL LISTED SF	5.3	12.0	23.8	9.3	8.5	7.1	4.5	1.2	単線:2.89~3.65mm より線:6.64~10.52mm AWG:#8	3,500個 (35箱)	100個 (1箱)	690-350-01430	R 8-5 JP	UL LISTED SF JIS	9.0	22.3	9.3	690-350-01440	8-5NS JP	UL LISTED SF	6.4	12.0	23.8	9.3	8.5	7.1	4.5	1.2	単線:2.89~3.65mm より線:6.64~10.52mm AWG:#8	3,500個 (35箱)	100個 (1箱)	690-350-01450	R 8-6 JP	UL LISTED SF JIS	9.6	22.6	9.3	690-350-01460	8-6NS JP	UL LISTED SF	8.4	15.0	29.8	13.8	8.5	7.1	4.5	1.2	単線:2.89~3.65mm より線:6.64~10.52mm AWG:#8	3,500個 (35箱)	100個 (1箱)	690-350-01470	R 8-8 JP	UL LISTED SF JIS	11.5	28.1	13.8	690-350-01480	8-8NS JP	UL LISTED SF	10.5	15.0	29.8	13.8	8.5	7.1	4.5	1.2	単線:2.89~3.65mm より線:6.64~10.52mm AWG:#8	3,500個 (35箱)	100個 (1箱)	690-350-01490	R 8-10 JP	UL LISTED SF JIS	20.0	33.5	15.0	690-350-02920	8-12 JP	UL LISTED SF	25.00	33.5	15.0	15.0	2,500個 (25箱)																																																																																																																																																																																																																																																																																																																																																																																																																																																																																																																																																																																																																																																																									
690-350-01120	1.25-3.7 JP	UL LISTED SF	3.7	5.5	11.5	4.0	4.8	4.1	2.3	0.8				単線:1.14~1.82mm より線:1.04~2.63mm AWG:#16~#14	1,000個 (10箱)	100個 (1箱)																																																																																																																																																																																																																																																																																																																																																																																																																																																																																																																																																																																																																																																																																																																																																																																																																																																																																																																																																																																																																																																																																																				
690-350-01130	R 1.25-3.5 JP	UL LISTED SF JIS			6.6	14.4											6.3	690-350-01140	R 1.25-4 JP	UL LISTED SF JIS								4.3	8.0	15.8	7.0	4.8	4.8	2.7	1.0	単線:— より線:3.5mm AWG:#12	1,000個 (10箱)	100個 (1箱)	690-350-01150	1.25-M4 JP								UL LISTED SF	6.6	14.4	6.3	690-350-01160	R 1.25-5 JP	UL LISTED SF JIS	5.3	8.0	15.8	7.0	6.8	5.6								3.4	1.0	単線:1.82~2.89mm より線:2.63~6.64mm AWG:#12~#10	1,000個 (10箱)	100個 (1箱)	690-350-01170	1.25-6 JP	UL LISTED SF	6.4	11.6	21.7	11.1	690-350-01180	1.25-8 JP								UL LISTED SF	8.4	12.0	21.8	11.0	6.8	7.1	4.5	1.2	単線:2.89~3.65mm より線:6.64~10.52mm AWG:#8	3,500個 (35箱)	100個 (1箱)	690-350-01190	2-MS3 JP								UL LISTED SF	3.2	5.5	13.2	5.6	690-350-01200	2-3 JP	UL LISTED SF	3.7	6.6	14.4	6.3	8.5								7.1	4.5	1.2	単線:2.89~3.65mm より線:6.64~10.52mm AWG:#8	3,500個 (35箱)	100個 (1箱)	690-350-01210	R 2-3.5 JP	UL LISTED SF JIS	8.5	16.8	7.8	690-350-01220								R 2-4 JP	UL LISTED SF JIS	4.3	8.5	16.8	7.8	8.5	7.1	4.5	1.2	単線:2.89~3.65mm より線:6.64~10.52mm AWG:#8	3,500個 (35箱)	100個 (1箱)								690-350-01230	2-M4 JP	UL LISTED SF	6.6	14.4	6.3	690-350-01240	R 2-5 JP	UL LISTED SF JIS	5.3	9.5	16.8	7.8	8.5								7.1	4.5	1.2	単線:2.89~3.65mm より線:6.64~10.52mm AWG:#8	3,500個 (35箱)	100個 (1箱)	690-350-01250	2-M5 JP	UL LISTED SF	8.5	16.8	7.8	690-350-01260	R 2-6 JP								UL LISTED SF JIS	6.4	12.0	21.8	11.0	8.5	7.1	4.5	1.2	単線:2.89~3.65mm より線:6.64~10.52mm AWG:#8	3,500個 (35箱)	100個 (1箱)	690-350-01270	R 2-8 JP								UL LISTED SF JIS	8.4	12.0	21.8	11.0	690-350-01280	3.5-R4 JP	UL LISTED SF	4.3	8.0	17.8	9.0	8.5	7.1								4.5	1.2	単線:2.89~3.65mm より線:6.64~10.52mm AWG:#8	3,500個 (35箱)	100個 (1箱)	690-350-01290	3.5-R5 JP	UL LISTED SF	5.3	10.3	18.6	8.6	690-350-02900								3.5-5 JP	UL LISTED SF	6.4	10.3	18.6	8.6	8.5	7.1	4.5	1.2	単線:2.89~3.65mm より線:6.64~10.52mm AWG:#8	3,500個 (35箱)	100個 (1箱)								690-350-01300	3.5-6 JP	UL LISTED SF	9.5	19.8	8.3	6.8	690-350-01310	R 5.5-4 JP	UL LISTED SF JIS	4.3	7.2	15.7								5.9	8.5	7.1	4.5	1.2	単線:2.89~3.65mm より線:6.64~10.52mm AWG:#8	3,500個 (35箱)	100個 (1箱)	690-350-01320	5.5-S4 JP	UL LISTED SF	8.0	19.1								8.3	6.2	690-350-01330	5.5-4NS JP	UL LISTED SF	5.3	9.5	19.8	8.3	8.5	7.1	4.5	1.2								単線:2.89~3.65mm より線:6.64~10.52mm AWG:#8	3,500個 (35箱)	100個 (1箱)	690-350-01340	R 5.5-5 JP	UL LISTED SF JIS	8.0	19.1	8.3	690-350-01350	5.5-5NS JP	UL LISTED SF	6.4								12.0	25.8	13.0	8.5	7.1	4.5	1.2	単線:2.89~3.65mm より線:6.64~10.52mm AWG:#8	3,500個 (35箱)	100個 (1箱)	690-350-01360	R 5.5-6 JP	UL LISTED SF JIS								9.0	24.3	13.0	690-350-01370	5.5-6NS JP	UL LISTED SF	8.4	15.0	28.0	13.7	8.5	7.1	4.5								1.2	単線:2.89~3.65mm より線:6.64~10.52mm AWG:#8	3,500個 (35箱)	100個 (1箱)	690-350-01380	R 5.5-8 JP	UL LISTED SF JIS	13.2	22.4	9.0	690-350-01390	5.5-S8 JP	UL LISTED SF	10.5	15.0	28.0	13.7	8.5	7.1	4.5	1.2	単線:2.89~3.65mm より線:6.64~10.52mm AWG:#8	3,500個 (35箱)	100個 (1箱)	690-350-01400	R 5.5-10 JP	UL LISTED SF JIS	19.2	32.4	16.0	690-350-02910	5.5-12 JP	UL LISTED SF	4.3	8.0	21.8	9.3	8.5	7.1	4.5	1.2	単線:2.89~3.65mm より線:6.64~10.52mm AWG:#8	3,500個 (35箱)	100個 (1箱)	690-350-01410	8-4NS JP	UL LISTED SF	12.0	23.8	9.3	690-350-01420	8-4 JP	UL LISTED SF	5.3	12.0	23.8	9.3	8.5	7.1	4.5	1.2	単線:2.89~3.65mm より線:6.64~10.52mm AWG:#8	3,500個 (35箱)	100個 (1箱)	690-350-01430	R 8-5 JP	UL LISTED SF JIS	9.0	22.3	9.3	690-350-01440	8-5NS JP	UL LISTED SF	6.4	12.0	23.8	9.3	8.5	7.1	4.5	1.2	単線:2.89~3.65mm より線:6.64~10.52mm AWG:#8	3,500個 (35箱)	100個 (1箱)	690-350-01450	R 8-6 JP	UL LISTED SF JIS	9.6	22.6	9.3	690-350-01460	8-6NS JP	UL LISTED SF	8.4	15.0	29.8	13.8	8.5	7.1	4.5	1.2	単線:2.89~3.65mm より線:6.64~10.52mm AWG:#8	3,500個 (35箱)	100個 (1箱)	690-350-01470	R 8-8 JP	UL LISTED SF JIS	11.5	28.1	13.8	690-350-01480	8-8NS JP	UL LISTED SF	10.5	15.0	29.8	13.8	8.5	7.1	4.5	1.2	単線:2.89~3.65mm より線:6.64~10.52mm AWG:#8	3,500個 (35箱)	100個 (1箱)	690-350-01490	R 8-10 JP	UL LISTED SF JIS	20.0	33.5	15.0	690-350-02920	8-12 JP	UL LISTED SF	25.00	33.5	15.0	15.0	2,500個 (25箱)																																																																																																																																																																																																																																																																																																																																																																																																																																																																																																																																													
690-350-01140	R 1.25-4 JP	UL LISTED SF JIS	4.3	8.0	15.8	7.0											4.8	4.8	2.7	1.0										単線:— より線:3.5mm AWG:#12	1,000個 (10箱)								100個 (1箱)																																																																																																																																																																																																																																																																																																																																																																																																																																																																																																																																																																																																																																																																																																																																																																																																																																																																																																																																																																																																																																																																													
690-350-01150	1.25-M4 JP	UL LISTED SF			6.6	14.4																						6.3	690-350-01160											R 1.25-5 JP								UL LISTED SF JIS	5.3	8.0	15.8	7.0	6.8	5.6	3.4	1.0	単線:1.82~2.89mm より線:2.63~6.64mm AWG:#12~#10	1,000個 (10箱)															100個 (1箱)	690-350-01170	1.25-6 JP	UL LISTED SF	6.4	11.6	21.7	11.1	690-350-01180								1.25-8 JP	UL LISTED SF	8.4	12.0	21.8								11.0	6.8								7.1	4.5	1.2	単線:2.89~3.65mm より線:6.64~10.52mm AWG:#8	3,500個 (35箱)	100個 (1箱)	690-350-01190	2-MS3 JP	UL LISTED SF	3.2	5.5	13.2															5.6	690-350-01200	2-3 JP	UL LISTED SF	3.7	6.6	14.4								6.3	8.5	7.1	4.5	1.2	単線:2.89~3.65mm より線:6.64~10.52mm AWG:#8															3,500個 (35箱)	100個 (1箱)	690-350-01210	R 2-3.5 JP	UL LISTED SF JIS	8.5	16.8	7.8	690-350-01220	R 2-4 JP	UL LISTED SF JIS	4.3	8.5															16.8	7.8	8.5	7.1	4.5	1.2	単線:2.89~3.65mm より線:6.64~10.52mm AWG:#8	3,500個 (35箱)								100個 (1箱)	690-350-01230	2-M4 JP	UL LISTED SF	6.6								14.4	6.3								690-350-01240	R 2-5 JP	UL LISTED SF JIS	5.3	9.5	16.8	7.8	8.5	7.1	4.5	1.2	単線:2.89~3.65mm より線:6.64~10.52mm AWG:#8															3,500個 (35箱)	100個 (1箱)	690-350-01250	2-M5 JP	UL LISTED SF	8.5	16.8	7.8								690-350-01260	R 2-6 JP	UL LISTED SF JIS	6.4	12.0	21.8															11.0	8.5	7.1	4.5	1.2	単線:2.89~3.65mm より線:6.64~10.52mm AWG:#8	3,500個 (35箱)	100個 (1箱)	690-350-01270	R 2-8 JP	UL LISTED SF JIS	8.4	12.0								21.8								11.0	690-350-01280	3.5-R4 JP	UL LISTED SF	4.3								8.0	17.8	9.0	8.5	7.1	4.5	1.2	単線:2.89~3.65mm より線:6.64~10.52mm AWG:#8	3,500個 (35箱)															100個 (1箱)	690-350-01290	3.5-R5 JP	UL LISTED SF	5.3	10.3	18.6	8.6	690-350-02900	3.5-5 JP								UL LISTED SF	6.4	10.3								18.6	8.6	8.5								7.1	4.5	1.2	単線:2.89~3.65mm より線:6.64~10.52mm AWG:#8	3,500個 (35箱)	100個 (1箱)	690-350-01300	3.5-6 JP	UL LISTED SF	9.5															19.8	8.3	6.8	690-350-01310	R 5.5-4 JP	UL LISTED SF JIS	4.3	7.2	15.7	5.9	8.5	7.1	4.5								1.2	単線:2.89~3.65mm より線:6.64~10.52mm AWG:#8	3,500個 (35箱)	100個 (1箱)	690-350-01320	5.5-S4 JP	UL LISTED SF	8.0	19.1	8.3	6.2	690-350-01330	5.5-4NS JP								UL LISTED SF	5.3	9.5	19.8	8.3	8.5	7.1	4.5	1.2	単線:2.89~3.65mm より線:6.64~10.52mm AWG:#8	3,500個 (35箱)	100個 (1箱)	690-350-01340								R 5.5-5 JP	UL LISTED SF JIS	8.0	19.1	8.3	690-350-01350	5.5-5NS JP	UL LISTED SF	6.4	12.0	25.8	13.0	8.5								7.1	4.5	1.2	単線:2.89~3.65mm より線:6.64~10.52mm AWG:#8	3,500個 (35箱)	100個 (1箱)	690-350-01360	R 5.5-6 JP	UL LISTED SF JIS	9.0	24.3	13.0	690-350-01370								5.5-6NS JP	UL LISTED SF	8.4	15.0	28.0	13.7	8.5	7.1	4.5	1.2	単線:2.89~3.65mm より線:6.64~10.52mm AWG:#8	3,500個 (35箱)	100個 (1箱)								690-350-01380	R 5.5-8 JP	UL LISTED SF JIS	13.2	22.4	9.0	690-350-01390	5.5-S8 JP	UL LISTED SF	10.5	15.0	28.0	13.7	8.5	7.1	4.5	1.2	単線:2.89~3.65mm より線:6.64~10.52mm AWG:#8	3,500個 (35箱)	100個 (1箱)	690-350-01400	R 5.5-10 JP	UL LISTED SF JIS	19.2	32.4	16.0	690-350-02910	5.5-12 JP	UL LISTED SF	4.3	8.0	21.8	9.3	8.5	7.1	4.5	1.2	単線:2.89~3.65mm より線:6.64~10.52mm AWG:#8	3,500個 (35箱)	100個 (1箱)	690-350-01410	8-4NS JP	UL LISTED SF	12.0	23.8	9.3	690-350-01420	8-4 JP	UL LISTED SF	5.3	12.0	23.8	9.3	8.5	7.1	4.5	1.2	単線:2.89~3.65mm より線:6.64~10.52mm AWG:#8	3,500個 (35箱)	100個 (1箱)	690-350-01430	R 8-5 JP	UL LISTED SF JIS	9.0	22.3	9.3	690-350-01440	8-5NS JP	UL LISTED SF	6.4	12.0	23.8	9.3	8.5	7.1	4.5	1.2	単線:2.89~3.65mm より線:6.64~10.52mm AWG:#8	3,500個 (35箱)	100個 (1箱)	690-350-01450	R 8-6 JP	UL LISTED SF JIS	9.6	22.6	9.3	690-350-01460	8-6NS JP	UL LISTED SF	8.4	15.0	29.8	13.8	8.5	7.1	4.5	1.2	単線:2.89~3.65mm より線:6.64~10.52mm AWG:#8	3,500個 (35箱)	100個 (1箱)	690-350-01470	R 8-8 JP	UL LISTED SF JIS	11.5	28.1	13.8	690-350-01480	8-8NS JP	UL LISTED SF	10.5	15.0	29.8	13.8	8.5	7.1	4.5	1.2	単線:2.89~3.65mm より線:6.64~10.52mm AWG:#8	3,500個 (35箱)	100個 (1箱)	690-350-01490	R 8-10 JP	UL LISTED SF JIS	20.0	33.5	15.0	690-350-02920	8-12 JP	UL LISTED SF	25.00	33.5	15.0	15.0	2,500個 (25箱)																																																																																																																																																																																																																																																																																																																																																																																																																					
690-350-01160	R 1.25-5 JP	UL LISTED SF JIS	5.3	8.0	15.8	7.0																						6.8	5.6											3.4								1.0			単線:1.82~2.89mm より線:2.63~6.64mm AWG:#12~#10	1,000個 (10箱)																						100個 (1箱)																																																																																																																																																																																																																																																																																																																																																																																																																																																																																																																																																																																																																																																																																																																																																																																																																																																																																																																																																																																																																																										
690-350-01170	1.25-6 JP	UL LISTED SF			6.4	11.6																																											21.7	11.1																									690-350-01180	1.25-8 JP	UL LISTED SF	8.4	12.0	21.8	11.0								6.8	7.1	4.5	1.2	単線:2.89~3.65mm より線:6.64~10.52mm AWG:#8								3,500個 (35箱)															100個 (1箱)	690-350-01190	2-MS3 JP	UL LISTED SF	3.2	5.5															13.2	5.6	690-350-01200	2-3 JP	UL LISTED SF	3.7	6.6								14.4																						6.3	8.5	7.1	4.5	1.2	単線:2.89~3.65mm より線:6.64~10.52mm AWG:#8	3,500個 (35箱)	100個 (1箱)	690-350-01210	R 2-3.5 JP	UL LISTED SF JIS															8.5	16.8															7.8	690-350-01220	R 2-4 JP	UL LISTED SF JIS								4.3	8.5								16.8	7.8	8.5	7.1	4.5	1.2	単線:2.89~3.65mm より線:6.64~10.52mm AWG:#8																						3,500個 (35箱)	100個 (1箱)	690-350-01230	2-M4 JP	UL LISTED SF	6.6								14.4	6.3	690-350-01240	R 2-5 JP	UL LISTED SF JIS	5.3															9.5								16.8	7.8	8.5	7.1	4.5								1.2								単線:2.89~3.65mm より線:6.64~10.52mm AWG:#8	3,500個 (35箱)	100個 (1箱)	690-350-01250	2-M5 JP								UL LISTED SF	8.5	16.8																						7.8	690-350-01260	R 2-6 JP	UL LISTED SF JIS	6.4	12.0	21.8	11.0	8.5								7.1	4.5	1.2								単線:2.89~3.65mm より線:6.64~10.52mm AWG:#8	3,500個 (35箱)															100個 (1箱)	690-350-01270	R 2-8 JP	UL LISTED SF JIS															8.4	12.0	21.8	11.0	690-350-01280	3.5-R4 JP	UL LISTED SF	4.3	8.0	17.8															9.0	8.5	7.1	4.5	1.2	単線:2.89~3.65mm より線:6.64~10.52mm AWG:#8	3,500個 (35箱)	100個 (1箱)	690-350-01290								3.5-R5 JP	UL LISTED SF	5.3	10.3	18.6								8.6								690-350-02900	3.5-5 JP	UL LISTED SF	6.4	10.3	18.6	8.6	8.5	7.1	4.5	1.2	単線:2.89~3.65mm より線:6.64~10.52mm AWG:#8															3,500個 (35箱)	100個 (1箱)	690-350-01300	3.5-6 JP	UL LISTED SF	9.5	19.8								8.3	6.8	690-350-01310	R 5.5-4 JP	UL LISTED SF JIS	4.3															7.2	15.7	5.9	8.5	7.1	4.5	1.2	単線:2.89~3.65mm より線:6.64~10.52mm AWG:#8	3,500個 (35箱)	100個 (1箱)	690-350-01320	5.5-S4 JP	UL LISTED SF								8.0	19.1	8.3	6.2	690-350-01330	5.5-4NS JP	UL LISTED SF	5.3	9.5	19.8	8.3	8.5	7.1								4.5	1.2	単線:2.89~3.65mm より線:6.64~10.52mm AWG:#8	3,500個 (35箱)	100個 (1箱)	690-350-01340	R 5.5-5 JP	UL LISTED SF JIS	8.0	19.1	8.3	690-350-01350	5.5-5NS JP								UL LISTED SF	6.4	12.0	25.8	13.0	8.5	7.1	4.5	1.2	単線:2.89~3.65mm より線:6.64~10.52mm AWG:#8	3,500個 (35箱)	100個 (1箱)	690-350-01360								R 5.5-6 JP	UL LISTED SF JIS	9.0	24.3	13.0	690-350-01370	5.5-6NS JP	UL LISTED SF	8.4	15.0	28.0	13.7	8.5								7.1	4.5	1.2	単線:2.89~3.65mm より線:6.64~10.52mm AWG:#8	3,500個 (35箱)	100個 (1箱)	690-350-01380	R 5.5-8 JP	UL LISTED SF JIS	13.2	22.4	9.0	690-350-01390								5.5-S8 JP	UL LISTED SF	10.5	15.0	28.0	13.7	8.5	7.1	4.5	1.2	単線:2.89~3.65mm より線:6.64~10.52mm AWG:#8	3,500個 (35箱)	100個 (1箱)	690-350-01400	R 5.5-10 JP	UL LISTED SF JIS	19.2	32.4	16.0	690-350-02910	5.5-12 JP	UL LISTED SF	4.3	8.0	21.8	9.3	8.5	7.1	4.5	1.2	単線:2.89~3.65mm より線:6.64~10.52mm AWG:#8	3,500個 (35箱)	100個 (1箱)	690-350-01410	8-4NS JP	UL LISTED SF	12.0	23.8	9.3	690-350-01420	8-4 JP	UL LISTED SF	5.3	12.0	23.8	9.3	8.5	7.1	4.5	1.2	単線:2.89~3.65mm より線:6.64~10.52mm AWG:#8	3,500個 (35箱)	100個 (1箱)	690-350-01430	R 8-5 JP	UL LISTED SF JIS	9.0	22.3	9.3	690-350-01440	8-5NS JP	UL LISTED SF	6.4	12.0	23.8	9.3	8.5	7.1	4.5	1.2	単線:2.89~3.65mm より線:6.64~10.52mm AWG:#8	3,500個 (35箱)	100個 (1箱)	690-350-01450	R 8-6 JP	UL LISTED SF JIS	9.6	22.6	9.3	690-350-01460	8-6NS JP	UL LISTED SF	8.4	15.0	29.8	13.8	8.5	7.1	4.5	1.2	単線:2.89~3.65mm より線:6.64~10.52mm AWG:#8	3,500個 (35箱)	100個 (1箱)	690-350-01470	R 8-8 JP	UL LISTED SF JIS	11.5	28.1	13.8	690-350-01480	8-8NS JP	UL LISTED SF	10.5	15.0	29.8	13.8	8.5	7.1	4.5	1.2	単線:2.89~3.65mm より線:6.64~10.52mm AWG:#8	3,500個 (35箱)	100個 (1箱)	690-350-01490	R 8-10 JP	UL LISTED SF JIS	20.0	33.5	15.0	690-350-02920	8-12 JP	UL LISTED SF	25.00	33.5	15.0	15.0	2,500個 (25箱)																																																																																																																																																																																																																																																																																																				
690-350-01180	1.25-8 JP	UL LISTED SF	8.4	12.0	21.8	11.0																																											6.8	7.1																									4.5	1.2	単線:2.89~3.65mm より線:6.64~10.52mm AWG:#8			3,500個 (35箱)	100個 (1箱)																																																																																																																																																																																																																																																																																																																																																																																																																																																																																																																																																																																																																																																																																																																																																																																																																																																																																																																																																																																																																																			
690-350-01190	2-MS3 JP	UL LISTED SF			3.2	5.5																																																																								13.2	5.6																																						690-350-01200	2-3 JP	UL LISTED SF	3.7	6.6															14.4	6.3	8.5	7.1	4.5	1.2	単線:2.89~3.65mm より線:6.64~10.52mm AWG:#8								3,500個 (35箱)																						100個 (1箱)								690-350-01210	R 2-3.5 JP	UL LISTED SF JIS															8.5	16.8															7.8	690-350-01220	R 2-4 JP	UL LISTED SF JIS								4.3	8.5								16.8	7.8																													8.5	7.1	4.5	1.2								単線:2.89~3.65mm より線:6.64~10.52mm AWG:#8	3,500個 (35箱)	100個 (1箱)	690-350-01230	2-M4 JP	UL LISTED SF															6.6								14.4	6.3																						690-350-01240	R 2-5 JP								UL LISTED SF JIS	5.3	9.5																						16.8	7.8	8.5	7.1	4.5	1.2	単線:2.89~3.65mm より線:6.64~10.52mm AWG:#8	3,500個 (35箱)																																				100個 (1箱)	690-350-01250	2-M5 JP															UL LISTED SF	8.5	16.8	7.8	690-350-01260	R 2-6 JP	UL LISTED SF JIS	6.4	12.0	21.8															11.0								8.5								7.1	4.5	1.2	単線:2.89~3.65mm より線:6.64~10.52mm AWG:#8	3,500個 (35箱)								100個 (1箱)								690-350-01270	R 2-8 JP	UL LISTED SF JIS	8.4	12.0	21.8	11.0																						690-350-01280	3.5-R4 JP	UL LISTED SF	4.3	8.0								17.8	9.0	8.5	7.1	4.5	1.2															単線:2.89~3.65mm より線:6.64~10.52mm AWG:#8	3,500個 (35箱)	100個 (1箱)								690-350-01290	3.5-R5 JP	UL LISTED SF								5.3	10.3	18.6	8.6	690-350-02900	3.5-5 JP	UL LISTED SF	6.4	10.3	18.6	8.6															8.5	7.1	4.5	1.2	単線:2.89~3.65mm より線:6.64~10.52mm AWG:#8	3,500個 (35箱)	100個 (1箱)	690-350-01300								3.5-6 JP	UL LISTED SF	9.5	19.8	8.3								6.8								690-350-01310	R 5.5-4 JP	UL LISTED SF JIS	4.3	7.2	15.7	5.9	8.5	7.1	4.5	1.2	単線:2.89~3.65mm より線:6.64~10.52mm AWG:#8															3,500個 (35箱)	100個 (1箱)	690-350-01320	5.5-S4 JP	UL LISTED SF	8.0	19.1								8.3	6.2	690-350-01330	5.5-4NS JP	UL LISTED SF	5.3								9.5	19.8	8.3	8.5	7.1	4.5	1.2	単線:2.89~3.65mm より線:6.64~10.52mm AWG:#8	3,500個 (35箱)	100個 (1箱)	690-350-01340	R 5.5-5 JP	UL LISTED SF JIS								8.0	19.1	8.3	690-350-01350	5.5-5NS JP	UL LISTED SF	6.4	12.0	25.8	13.0	8.5	7.1	4.5								1.2	単線:2.89~3.65mm より線:6.64~10.52mm AWG:#8	3,500個 (35箱)	100個 (1箱)	690-350-01360	R 5.5-6 JP	UL LISTED SF JIS	9.0	24.3	13.0	690-350-01370	5.5-6NS JP	UL LISTED SF								8.4	15.0	28.0	13.7	8.5	7.1	4.5	1.2	単線:2.89~3.65mm より線:6.64~10.52mm AWG:#8	3,500個 (35箱)	100個 (1箱)	690-350-01380	R 5.5-8 JP								UL LISTED SF JIS	13.2	22.4	9.0	690-350-01390	5.5-S8 JP	UL LISTED SF	10.5	15.0	28.0	13.7	8.5	7.1								4.5	1.2	単線:2.89~3.65mm より線:6.64~10.52mm AWG:#8	3,500個 (35箱)	100個 (1箱)	690-350-01400	R 5.5-10 JP	UL LISTED SF JIS	19.2	32.4	16.0	690-350-02910	5.5-12 JP	UL LISTED SF	4.3	8.0	21.8	9.3	8.5	7.1	4.5	1.2	単線:2.89~3.65mm より線:6.64~10.52mm AWG:#8	3,500個 (35箱)	100個 (1箱)	690-350-01410	8-4NS JP	UL LISTED SF	12.0	23.8	9.3	690-350-01420	8-4 JP	UL LISTED SF	5.3	12.0	23.8	9.3	8.5	7.1	4.5	1.2	単線:2.89~3.65mm より線:6.64~10.52mm AWG:#8	3,500個 (35箱)	100個 (1箱)	690-350-01430	R 8-5 JP	UL LISTED SF JIS	9.0	22.3	9.3	690-350-01440	8-5NS JP	UL LISTED SF	6.4	12.0	23.8	9.3	8.5	7.1	4.5	1.2	単線:2.89~3.65mm より線:6.64~10.52mm AWG:#8	3,500個 (35箱)	100個 (1箱)	690-350-01450	R 8-6 JP	UL LISTED SF JIS	9.6	22.6	9.3	690-350-01460	8-6NS JP	UL LISTED SF	8.4	15.0	29.8	13.8	8.5	7.1	4.5	1.2	単線:2.89~3.65mm より線:6.64~10.52mm AWG:#8	3,500個 (35箱)	100個 (1箱)	690-350-01470	R 8-8 JP	UL LISTED SF JIS	11.5	28.1	13.8	690-350-01480	8-8NS JP	UL LISTED SF	10.5	15.0	29.8	13.8	8.5	7.1	4.5	1.2	単線:2.89~3.65mm より線:6.64~10.52mm AWG:#8	3,500個 (35箱)	100個 (1箱)	690-350-01490	R 8-10 JP	UL LISTED SF JIS	20.0	33.5	15.0	690-350-02920	8-12 JP	UL LISTED SF	25.00	33.5	15.0	15.0	2,500個 (25箱)																																																																																																																																																																																											
690-350-01200	2-3 JP	UL LISTED SF	3.7	6.6	14.4	6.3																																																																								8.5	7.1																																						4.5	1.2	単線:2.89~3.65mm より線:6.64~10.52mm AWG:#8																	3,500個 (35箱)	100個 (1箱)																																																																																																																																																																																																																																																																																																																																																																																																																																																																																																																																																																																																																																																																																																																																																																																																																																																																																																																																																																											
690-350-01210	R 2-3.5 JP	UL LISTED SF JIS			8.5	16.8																																																																																																																		7.8	690-350-01220																																																											R 2-4 JP	UL LISTED SF JIS	4.3															8.5	16.8															7.8	8.5	7.1	4.5								1.2	単線:2.89~3.65mm より線:6.64~10.52mm AWG:#8								3,500個 (35箱)	100個 (1箱)																																											690-350-01230	2-M4 JP	UL LISTED SF															6.6								14.4	6.3																						690-350-01240	R 2-5 JP								UL LISTED SF JIS	5.3	9.5																						16.8	7.8																																											8.5	7.1															4.5	1.2	単線:2.89~3.65mm より線:6.64~10.52mm AWG:#8	3,500個 (35箱)	100個 (1箱)	690-350-01250	2-M5 JP	UL LISTED SF	8.5	16.8															7.8																																				690-350-01260	R 2-6 JP	UL LISTED SF JIS	6.4	12.0	21.8	11.0																						8.5	7.1	4.5	1.2	単線:2.89~3.65mm より線:6.64~10.52mm AWG:#8								3,500個 (35箱)	100個 (1箱)																													690-350-01270	R 2-8 JP	UL LISTED SF JIS								8.4	12.0	21.8	11.0	690-350-01280	3.5-R4 JP	UL LISTED SF	4.3	8.0	17.8	9.0																						8.5								7.1	4.5	1.2	単線:2.89~3.65mm より線:6.64~10.52mm AWG:#8	3,500個 (35箱)								100個 (1箱)								690-350-01290	3.5-R5 JP	UL LISTED SF	5.3	10.3	18.6	8.6																						690-350-02900	3.5-5 JP	UL LISTED SF	6.4	10.3								18.6	8.6	8.5	7.1	4.5	1.2								単線:2.89~3.65mm より線:6.64~10.52mm AWG:#8	3,500個 (35箱)	100個 (1箱)								690-350-01300	3.5-6 JP	UL LISTED SF								9.5	19.8	8.3	6.8	690-350-01310	R 5.5-4 JP	UL LISTED SF JIS	4.3	7.2	15.7															5.9	8.5	7.1	4.5	1.2	単線:2.89~3.65mm より線:6.64~10.52mm AWG:#8	3,500個 (35箱)	100個 (1箱)	690-350-01320								5.5-S4 JP	UL LISTED SF	8.0	19.1								8.3	6.2								690-350-01330	5.5-4NS JP	UL LISTED SF	5.3	9.5	19.8	8.3	8.5	7.1	4.5	1.2															単線:2.89~3.65mm より線:6.64~10.52mm AWG:#8	3,500個 (35箱)	100個 (1箱)	690-350-01340	R 5.5-5 JP	UL LISTED SF JIS	8.0	19.1	8.3	690-350-01350	5.5-5NS JP	UL LISTED SF	6.4								12.0	25.8	13.0	8.5	7.1	4.5	1.2	単線:2.89~3.65mm より線:6.64~10.52mm AWG:#8	3,500個 (35箱)	100個 (1箱)	690-350-01360	R 5.5-6 JP	UL LISTED SF JIS								9.0	24.3	13.0	690-350-01370	5.5-6NS JP	UL LISTED SF	8.4	15.0	28.0	13.7	8.5	7.1	4.5								1.2	単線:2.89~3.65mm より線:6.64~10.52mm AWG:#8	3,500個 (35箱)	100個 (1箱)	690-350-01380	R 5.5-8 JP	UL LISTED SF JIS	13.2	22.4	9.0	690-350-01390	5.5-S8 JP	UL LISTED SF								10.5	15.0	28.0	13.7	8.5	7.1	4.5	1.2	単線:2.89~3.65mm より線:6.64~10.52mm AWG:#8	3,500個 (35箱)	100個 (1箱)	690-350-01400	R 5.5-10 JP								UL LISTED SF JIS	19.2	32.4	16.0	690-350-02910	5.5-12 JP	UL LISTED SF	4.3	8.0	21.8	9.3	8.5	7.1	4.5	1.2	単線:2.89~3.65mm より線:6.64~10.52mm AWG:#8	3,500個 (35箱)	100個 (1箱)	690-350-01410	8-4NS JP	UL LISTED SF	12.0	23.8	9.3	690-350-01420	8-4 JP	UL LISTED SF	5.3	12.0	23.8	9.3	8.5	7.1	4.5	1.2	単線:2.89~3.65mm より線:6.64~10.52mm AWG:#8	3,500個 (35箱)	100個 (1箱)	690-350-01430	R 8-5 JP	UL LISTED SF JIS	9.0	22.3	9.3	690-350-01440	8-5NS JP	UL LISTED SF	6.4	12.0	23.8	9.3	8.5	7.1	4.5	1.2	単線:2.89~3.65mm より線:6.64~10.52mm AWG:#8	3,500個 (35箱)	100個 (1箱)	690-350-01450	R 8-6 JP	UL LISTED SF JIS	9.6	22.6	9.3	690-350-01460	8-6NS JP	UL LISTED SF	8.4	15.0	29.8	13.8	8.5	7.1	4.5	1.2	単線:2.89~3.65mm より線:6.64~10.52mm AWG:#8	3,500個 (35箱)	100個 (1箱)	690-350-01470	R 8-8 JP	UL LISTED SF JIS	11.5	28.1	13.8	690-350-01480	8-8NS JP	UL LISTED SF	10.5	15.0	29.8	13.8	8.5	7.1	4.5	1.2	単線:2.89~3.65mm より線:6.64~10.52mm AWG:#8	3,500個 (35箱)	100個 (1箱)	690-350-01490	R 8-10 JP	UL LISTED SF JIS	20.0	33.5	15.0	690-350-02920	8-12 JP	UL LISTED SF	25.00	33.5	15.0	15.0	2,500個 (25箱)																																																																																									
690-350-01220	R 2-4 JP	UL LISTED SF JIS	4.3	8.5	16.8	7.8																																																																																																																		8.5	7.1																																																											4.5	1.2																	単線:2.89~3.65mm より線:6.64~10.52mm AWG:#8															3,500個 (35箱)																																																																100個 (1箱)																																																																																																																																																																																																																																																																																																																																																																																																																																																																																																																																																																																																																																																																																																																																																																																																																															
690-350-01230	2-M4 JP	UL LISTED SF			6.6	14.4																																																																																																																																																																																6.3															690-350-01240																																																																																	R 2-5 JP	UL LISTED SF JIS															5.3								9.5	16.8																						7.8	8.5								7.1	4.5	1.2																						単線:2.89~3.65mm より線:6.64~10.52mm AWG:#8	3,500個 (35箱)																																																																100個 (1箱)	690-350-01250	2-M5 JP	UL LISTED SF	8.5															16.8																																				7.8	690-350-01260	R 2-6 JP	UL LISTED SF JIS	6.4	12.0	21.8																																																																11.0	8.5	7.1								4.5	1.2	単線:2.89~3.65mm より線:6.64~10.52mm AWG:#8	3,500個 (35箱)	100個 (1箱)	690-350-01270	R 2-8 JP	UL LISTED SF JIS	8.4	12.0	21.8																																																		11.0	690-350-01280	3.5-R4 JP	UL LISTED SF	4.3	8.0	17.8																						9.0	8.5	7.1	4.5	1.2								単線:2.89~3.65mm より線:6.64~10.52mm AWG:#8	3,500個 (35箱)																						100個 (1箱)	690-350-01290	3.5-R5 JP								UL LISTED SF	5.3	10.3	18.6	8.6	690-350-02900	3.5-5 JP	UL LISTED SF	6.4	10.3															18.6								8.6								8.5	7.1	4.5	1.2								単線:2.89~3.65mm より線:6.64~10.52mm AWG:#8	3,500個 (35箱)								100個 (1箱)	690-350-01300	3.5-6 JP	UL LISTED SF	9.5	19.8	8.3																						6.8	690-350-01310	R 5.5-4 JP	UL LISTED SF JIS	4.3	7.2	15.7	5.9	8.5	7.1								4.5	1.2	単線:2.89~3.65mm より線:6.64~10.52mm AWG:#8								3,500個 (35箱)	100個 (1箱)	690-350-01320								5.5-S4 JP	UL LISTED SF	8.0	19.1	8.3	6.2	690-350-01330	5.5-4NS JP	UL LISTED SF	5.3															9.5	19.8	8.3	8.5	7.1	4.5	1.2	単線:2.89~3.65mm より線:6.64~10.52mm AWG:#8	3,500個 (35箱)								100個 (1箱)	690-350-01340	R 5.5-5 JP	UL LISTED SF JIS								8.0	19.1								8.3	690-350-01350	5.5-5NS JP	UL LISTED SF	6.4	12.0	25.8	13.0	8.5	7.1	4.5								1.2	単線:2.89~3.65mm より線:6.64~10.52mm AWG:#8	3,500個 (35箱)	100個 (1箱)	690-350-01360	R 5.5-6 JP	UL LISTED SF JIS	9.0	24.3	13.0	690-350-01370	5.5-6NS JP	UL LISTED SF								8.4	15.0	28.0	13.7	8.5	7.1	4.5	1.2	単線:2.89~3.65mm より線:6.64~10.52mm AWG:#8	3,500個 (35箱)	100個 (1箱)	690-350-01380	R 5.5-8 JP								UL LISTED SF JIS	13.2	22.4	9.0	690-350-01390	5.5-S8 JP	UL LISTED SF	10.5	15.0	28.0	13.7	8.5	7.1								4.5	1.2	単線:2.89~3.65mm より線:6.64~10.52mm AWG:#8	3,500個 (35箱)	100個 (1箱)	690-350-01400	R 5.5-10 JP	UL LISTED SF JIS	19.2	32.4	16.0	690-350-02910	5.5-12 JP								UL LISTED SF	4.3	8.0	21.8	9.3	8.5	7.1	4.5	1.2	単線:2.89~3.65mm より線:6.64~10.52mm AWG:#8	3,500個 (35箱)	100個 (1箱)	690-350-01410	8-4NS JP	UL LISTED SF	12.0	23.8	9.3	690-350-01420	8-4 JP	UL LISTED SF	5.3	12.0	23.8	9.3	8.5	7.1	4.5	1.2	単線:2.89~3.65mm より線:6.64~10.52mm AWG:#8	3,500個 (35箱)	100個 (1箱)	690-350-01430	R 8-5 JP	UL LISTED SF JIS	9.0	22.3	9.3	690-350-01440	8-5NS JP	UL LISTED SF	6.4	12.0	23.8	9.3	8.5	7.1	4.5	1.2	単線:2.89~3.65mm より線:6.64~10.52mm AWG:#8	3,500個 (35箱)	100個 (1箱)	690-350-01450	R 8-6 JP	UL LISTED SF JIS	9.6	22.6	9.3	690-350-01460	8-6NS JP	UL LISTED SF	8.4	15.0	29.8	13.8	8.5	7.1	4.5	1.2	単線:2.89~3.65mm より線:6.64~10.52mm AWG:#8	3,500個 (35箱)	100個 (1箱)	690-350-01470	R 8-8 JP	UL LISTED SF JIS	11.5	28.1	13.8	690-350-01480	8-8NS JP	UL LISTED SF	10.5	15.0	29.8	13.8	8.5	7.1	4.5	1.2	単線:2.89~3.65mm より線:6.64~10.52mm AWG:#8	3,500個 (35箱)	100個 (1箱)	690-350-01490	R 8-10 JP	UL LISTED SF JIS	20.0	33.5	15.0	690-350-02920	8-12 JP	UL LISTED SF	25.00	33.5
690-350-01240	R 2-5 JP	UL LISTED SF JIS	5.3	9.5	16.8	7.8					8.5	7.1	4.5																																																																																																																																																																									1.2															単線:2.89~3.65mm より線:6.64~10.52mm AWG:#8																																																																																	3,500個 (35箱)	100個 (1箱)																																																																																																																																																																																																																																																																																																																																																																																																																																																																																																																																																																																																																																																																																																																																																																																																																													
690-350-01250	2-M5 JP	UL LISTED SF			8.5	16.8															7.8	690-350-01260	R 2-6 JP	UL LISTED SF JIS	6.4	12.0	21.8														11.0	8.5	7.1	4.5	1.2	単線:2.89~3.65mm より線:6.64~10.52mm AWG:#8	3,500個 (35箱)														100個 (1箱)	690-350-01270	R 2-8 JP	UL LISTED SF JIS	8.4	12.0	21.8															11.0	690-350-01280	3.5-R4 JP	UL LISTED SF	4.3	8.0	17.8															9.0	8.5	7.1	4.5	1.2	単線:2.89~3.65mm より線:6.64~10.52mm AWG:#8	3,500個 (35箱)														100個 (1箱)	690-350-01290	3.5-R5 JP	UL LISTED SF	5.3	10.3	18.6														8.6	690-350-02900	3.5-5 JP	UL LISTED SF	6.4	10.3	18.6														8.6	8.5	7.1	4.5	1.2	単線:2.89~3.65mm より線:6.64~10.52mm AWG:#8	3,500個 (35箱)															100個 (1箱)	690-350-01300	3.5-6 JP	UL LISTED SF	9.5	19.8	8.3															6.8	690-350-01310	R 5.5-4 JP	UL LISTED SF JIS	4.3	7.2	15.7															5.9	8.5	7.1	4.5	1.2	単線:2.89~3.65mm より線:6.64~10.52mm AWG:#8	3,500個 (35箱)															100個 (1箱)	690-350-01320	5.5-S4 JP	UL LISTED SF	8.0	19.1	8.3														6.2	690-350-01330	5.5-4NS JP	UL LISTED SF	5.3	9.5	19.8														8.3	8.5	7.1	4.5	1.2	単線:2.89~3.65mm より線:6.64~10.52mm AWG:#8	3,500個 (35箱)	100個 (1箱)								690-350-01340	R 5.5-5 JP				UL LISTED SF JIS	8.0	19.1	8.3	690-350-01350	5.5-5NS JP	UL LISTED SF												6.4		12.0	25.8	13.0	8.5	7.1	4.5	1.2														単線:2.89~3.65mm より線:6.64~10.52mm AWG:#8	3,500個 (35箱)	100個 (1箱)	690-350-01360	R 5.5-6 JP	UL LISTED SF JIS	9.0														24.3	13.0	690-350-01370	5.5-6NS JP	UL LISTED SF	8.4	15.0														28.0	13.7	8.5	7.1	4.5	1.2	単線:2.89~3.65mm より線:6.64~10.52mm AWG:#8														3,500個 (35箱)	100個 (1箱)	690-350-01380	R 5.5-8 JP	UL LISTED SF JIS	13.2	22.4											9.0	690-350-01390	5.5-S8 JP	UL LISTED SF															10.5																																				15.0	28.0	13.7	8.5	7.1	4.5	1.2																																																																単線:2.89~3.65mm より線:6.64~10.52mm AWG:#8															3,500個 (35箱)	100個 (1箱)	690-350-01400	R 5.5-10 JP	UL LISTED SF JIS	19.2																																																		32.4	16.0	690-350-02910	5.5-12 JP	UL LISTED SF	4.3	8.0																						21.8																																				9.3	8.5								7.1	4.5	1.2	単線:2.89~3.65mm より線:6.64~10.52mm AWG:#8	3,500個 (35箱)	100個 (1箱)	690-350-01410	8-4NS JP	UL LISTED SF	12.0															23.8								9.3																													690-350-01420	8-4 JP	UL LISTED SF	5.3	12.0	23.8																						9.3	8.5	7.1	4.5	1.2	単線:2.89~3.65mm より線:6.64~10.52mm AWG:#8	3,500個 (35箱)	100個 (1箱)																						690-350-01430								R 8-5 JP	UL LISTED SF JIS	9.0	22.3	9.3	690-350-01440	8-5NS JP	UL LISTED SF	6.4	12.0															23.8	9.3	8.5															7.1	4.5	1.2								単線:2.89~3.65mm より線:6.64~10.52mm AWG:#8	3,500個 (35箱)								100個 (1箱)	690-350-01450	R 8-6 JP	UL LISTED SF JIS	9.6	22.6	9.3	690-350-01460															8-6NS JP	UL LISTED SF	8.4	15.0	29.8	13.8	8.5	7.1	4.5								1.2	単線:2.89~3.65mm より線:6.64~10.52mm AWG:#8	3,500個 (35箱)	100個 (1箱)								690-350-01470	R 8-8 JP								UL LISTED SF JIS	11.5	28.1	13.8	690-350-01480	8-8NS JP	UL LISTED SF	10.5	15.0	29.8	13.8															8.5	7.1	4.5	1.2	単線:2.89~3.65mm より線:6.64~10.52mm AWG:#8	3,500個 (35箱)	100個 (1箱)	690-350-01490								R 8-10 JP	UL LISTED SF JIS	20.0	33.5	15.0								690-350-02920	8-12 JP	UL LISTED SF	25.00	33.5	15.0	15.0	2,500個 (25箱)																																																																																			
690-350-01260	R 2-6 JP	UL LISTED SF JIS	6.4	12.0	21.8	11.0	8.5	7.1	4.5	1.2				単線:2.89~3.65mm より線:6.64~10.52mm AWG:#8	3,500個 (35箱)	100個 (1箱)																																																																																																																																																																																																																																																																																																																																																																																																																																																																																																																																																																																																																																																																																																																																																																																																																																																																																																																																																																																																																																																																																																				
690-350-01270	R 2-8 JP	UL LISTED SF JIS			8.4	12.0															21.8	11.0	690-350-01280	3.5-R4 JP	UL LISTED SF	4.3	8.0					17.8	9.0	8.5	7.1	4.5	1.2	単線:2.89~3.65mm より線:6.64~10.52mm AWG:#8			3,500個 (35箱)																		100個 (1箱)	690-350-01290		3.5-R5 JP	UL LISTED SF	5.3	10.3	18.6	8.6	690-350-02900	3.5-5 JP	UL LISTED SF	6.4	10.3										18.6	8.6	8.5	7.1	4.5	1.2	単線:2.89~3.65mm より線:6.64~10.52mm AWG:#8						3,500個 (35箱)	100個 (1箱)	690-350-01300	3.5-6 JP	UL LISTED SF	9.5	19.8			8.3																			6.8		690-350-01310	R 5.5-4 JP	UL LISTED SF JIS	4.3	7.2	15.7	5.9	8.5	7.1	4.5	1.2	単線:2.89~3.65mm より線:6.64~10.52mm AWG:#8								3,500個 (35箱)	100個 (1箱)	690-350-01320	5.5-S4 JP	UL LISTED SF	8.0	19.1							8.3	6.2	690-350-01330	5.5-4NS JP	UL LISTED SF	5.3	9.5	19.8																				8.3		8.5	7.1	4.5	1.2	単線:2.89~3.65mm より線:6.64~10.52mm AWG:#8	3,500個 (35箱)	100個 (1箱)	690-350-01340	R 5.5-5 JP	UL LISTED SF JIS	8.0	19.1									8.3	690-350-01350	5.5-5NS JP	UL LISTED SF	6.4	12.0	25.8						13.0	8.5	7.1	4.5	1.2	単線:2.89~3.65mm より線:6.64~10.52mm AWG:#8	3,500個 (35箱)			100個 (1箱)																			690-350-01360	R 5.5-6 JP		UL LISTED SF JIS	9.0	24.3	13.0	690-350-01370	5.5-6NS JP	UL LISTED SF	8.4	15.0	28.0	13.7									8.5	7.1	4.5	1.2	単線:2.89~3.65mm より線:6.64~10.52mm AWG:#8	3,500個 (35箱)	100個 (1箱)							690-350-01380	R 5.5-8 JP	UL LISTED SF JIS	13.2	22.4	9.0	690-350-01390	5.5-S8 JP															UL LISTED SF	10.5				15.0	28.0	13.7	8.5	7.1	4.5	1.2		単線:2.89~3.65mm より線:6.64~10.52mm AWG:#8	3,500個 (35箱)	100個 (1箱)	690-350-01400	R 5.5-10 JP	UL LISTED SF JIS	19.2				32.4		16.0	690-350-02910	5.5-12 JP														UL LISTED SF	4.3	8.0	21.8				9.3	8.5	7.1	4.5	1.2	単線:2.89~3.65mm より線:6.64~10.52mm AWG:#8	3,500個 (35箱)											100個 (1箱)	690-350-01410	8-4NS JP	UL LISTED SF	12.0	23.8	9.3				690-350-01420	8-4 JP	UL LISTED SF	5.3	12.0	23.8	9.3				8.5	7.1																4.5	1.2	単線:2.89~3.65mm より線:6.64~10.52mm AWG:#8			3,500個 (35箱)	100個 (1箱)	690-350-01430	R 8-5 JP	UL LISTED SF JIS	9.0	22.3	9.3	690-350-01440							8-5NS JP	UL LISTED SF	6.4	12.0				23.8	9.3	8.5	7.1	4.5	1.2	単線:2.89~3.65mm より線:6.64~10.52mm AWG:#8					3,500個 (35箱)									100個 (1箱)	690-350-01450	R 8-6 JP	UL LISTED SF JIS	9.6	22.6	9.3														690-350-01460	8-6NS JP	UL LISTED SF	8.4	15.0	29.8	13.8	8.5	7.1	4.5											1.2	単線:2.89~3.65mm より線:6.64~10.52mm AWG:#8	3,500個 (35箱)	100個 (1箱)	690-350-01470	R 8-8 JP	UL LISTED SF JIS														11.5	28.1	13.8	690-350-01480	8-8NS JP	UL LISTED SF	10.5														15.0	29.8	13.8	8.5	7.1	4.5	1.2																												単線:2.89~3.65mm より線:6.64~10.52mm AWG:#8	3,500個 (35箱)	100個 (1箱)	690-350-01490																																																		R 8-10 JP	UL LISTED SF JIS	20.0	33.5	15.0	690-350-02920	8-12 JP																						UL LISTED SF																																				25.00															33.5	15.0	15.0	2,500個 (25箱)																																																																																																																																																																																																																																																																																																																																																																																								
690-350-01280	3.5-R4 JP	UL LISTED SF	4.3	8.0	17.8	9.0											8.5	7.1	4.5	1.2	単線:2.89~3.65mm より線:6.64~10.52mm AWG:#8	3,500個 (35箱)	100個 (1箱)																																																																																																																																																																																																																																																																																																																																																																																																																																																																																																																																																																																																																																																																																																																																																																																																																																																																																																																																																																																																																																																																																													
690-350-01290	3.5-R5 JP	UL LISTED SF			5.3	10.3																		18.6	8.6	690-350-02900	3.5-5 JP			UL LISTED SF	6.4	10.3	18.6						8.6														8.5	7.1	4.5	1.2	単線:2.89~3.65mm より線:6.64~10.52mm AWG:#8	3,500個 (35箱)		100個 (1箱)		690-350-01300	3.5-6 JP	UL LISTED SF	9.5	19.8	8.3	6.8	690-350-01310	R 5.5-4 JP	UL LISTED SF JIS	4.3	7.2									15.7	5.9													8.5	7.1	4.5	1.2	単線:2.89~3.65mm より線:6.64~10.52mm AWG:#8		3,500個 (35箱)	100個 (1箱)							690-350-01320	5.5-S4 JP	UL LISTED SF	8.0	19.1	8.3							6.2		690-350-01330	5.5-4NS JP	UL LISTED SF	5.3	9.5	19.8	8.3															8.5	7.1	4.5	1.2	単線:2.89~3.65mm より線:6.64~10.52mm AWG:#8		3,500個 (35箱)	100個 (1箱)	690-350-01340	R 5.5-5 JP	UL LISTED SF JIS	8.0	19.1	8.3	690-350-01350	5.5-5NS JP	UL LISTED SF	6.4	12.0							25.8	13.0												8.5									7.1	4.5	1.2	単線:2.89~3.65mm より線:6.64~10.52mm AWG:#8	3,500個 (35箱)			100個 (1箱)	690-350-01360	R 5.5-6 JP	UL LISTED SF JIS	9.0	24.3	13.0	690-350-01370	5.5-6NS JP	UL LISTED SF	8.4	15.0	28.0	13.7					8.5																							7.1	4.5	1.2	単線:2.89~3.65mm より線:6.64~10.52mm AWG:#8	3,500個 (35箱)	100個 (1箱)	690-350-01380		R 5.5-8 JP	UL LISTED SF JIS	13.2	22.4	9.0	690-350-01390	5.5-S8 JP	UL LISTED SF	10.5	15.0	28.0	13.7	8.5																				7.1	4.5	1.2	単線:2.89~3.65mm より線:6.64~10.52mm AWG:#8	3,500個 (35箱)	100個 (1箱)	690-350-01400	R 5.5-10 JP								UL LISTED SF JIS	19.2	32.4	16.0	690-350-02910	5.5-12 JP	UL LISTED SF	4.3	8.0				21.8	9.3	8.5									7.1	4.5	1.2	単線:2.89~3.65mm より線:6.64~10.52mm AWG:#8				3,500個 (35箱)		100個 (1箱)	690-350-01410	8-4NS JP								UL LISTED SF	12.0	23.8	9.3	690-350-01420	8-4 JP	UL LISTED SF	5.3	12.0	23.8				9.3							8.5											7.1	4.5	1.2	単線:2.89~3.65mm より線:6.64~10.52mm AWG:#8	3,500個 (35箱)	100個 (1箱)				690-350-01430	R 8-5 JP	UL LISTED SF JIS	9.0	22.3	9.3	690-350-01440			8-5NS JP								UL LISTED SF	6.4	12.0	23.8	9.3	8.5												7.1	4.5	1.2	単線:2.89~3.65mm より線:6.64~10.52mm AWG:#8	3,500個 (35箱)	100個 (1箱)	690-350-01450							R 8-6 JP	UL LISTED SF JIS	9.6	22.6	9.3	690-350-01460	8-6NS JP	UL LISTED SF	8.4						15.0	29.8	13.8	8.5											7.1	4.5	1.2	単線:2.89~3.65mm より線:6.64~10.52mm AWG:#8	3,500個 (35箱)	100個 (1箱)						690-350-01470	R 8-8 JP	UL LISTED SF JIS	11.5	28.1	13.8	690-350-01480		8-8NS JP	UL LISTED SF	10.5	15.0	29.8	13.8	8.5													7.1					4.5	1.2	単線:2.89~3.65mm より線:6.64~10.52mm AWG:#8	3,500個 (35箱)	100個 (1箱)	690-350-01490	R 8-10 JP	UL LISTED SF JIS	20.0								33.5	15.0	690-350-02920	8-12 JP	UL LISTED SF	25.00	33.5							15.0	15.0	2,500個 (25箱)																																																																																																																																																																																																																																																																																																																																																																																																																																																																																																																																																																						
690-350-02900	3.5-5 JP	UL LISTED SF	6.4	10.3	18.6	8.6																		8.5	7.1	4.5	1.2	単線:2.89~3.65mm より線:6.64~10.52mm AWG:#8	3,500個 (35箱)	100個 (1箱)																																																																																																																																																																																																																																																																																																																																																																																																																																																																																																																																																																																																																																																																																																																																																																																																																																																																																																																																																																																																																																																																																						
690-350-01300	3.5-6 JP	UL LISTED SF			9.5	19.8																									8.3	6.8	690-350-01310						R 5.5-4 JP	UL LISTED SF JIS								4.3			7.2	15.7										5.9	8.5	7.1	4.5	1.2	単線:2.89~3.65mm より線:6.64~10.52mm AWG:#8	3,500個 (35箱)	100個 (1箱)	690-350-01320	5.5-S4 JP	UL LISTED SF	8.0	19.1								8.3	6.2						690-350-01330	5.5-4NS JP	UL LISTED SF	5.3	9.5								19.8									8.3	8.5	7.1	4.5	1.2	単線:2.89~3.65mm より線:6.64~10.52mm AWG:#8	3,500個 (35箱)						100個 (1箱)		690-350-01340	R 5.5-5 JP	UL LISTED SF JIS	8.0	19.1	8.3	690-350-01350																							5.5-5NS JP	UL LISTED SF	6.4	12.0	25.8	13.0	8.5	7.1	4.5	1.2	単線:2.89~3.65mm より線:6.64~10.52mm AWG:#8							3,500個 (35箱)	100個 (1箱)		690-350-01360	R 5.5-6 JP	UL LISTED SF JIS	9.0	24.3	13.0	690-350-01370																					5.5-6NS JP	UL LISTED SF	8.4	15.0	28.0	13.7	8.5	7.1	4.5	1.2	単線:2.89~3.65mm より線:6.64~10.52mm AWG:#8	3,500個 (35箱)	100個 (1箱)																							690-350-01380	R 5.5-8 JP	UL LISTED SF JIS	13.2	22.4							9.0		690-350-01390	5.5-S8 JP	UL LISTED SF	10.5	15.0	28.0	13.7	8.5	7.1	4.5	1.2	単線:2.89~3.65mm より線:6.64~10.52mm AWG:#8		3,500個 (35箱)	100個 (1箱)																								690-350-01400	R 5.5-10 JP								UL LISTED SF JIS	19.2	32.4	16.0	690-350-02910	5.5-12 JP	UL LISTED SF	4.3	8.0	21.8	9.3	8.5	7.1	4.5						1.2								単線:2.89~3.65mm より線:6.64~10.52mm AWG:#8	3,500個 (35箱)	100個 (1箱)				690-350-01410	8-4NS JP								UL LISTED SF	12.0	23.8	9.3	690-350-01420	8-4 JP	UL LISTED SF	5.3	12.0	23.8				9.3																8.5								7.1	4.5	1.2	単線:2.89~3.65mm より線:6.64~10.52mm AWG:#8	3,500個 (35箱)	100個 (1箱)	690-350-01430	R 8-5 JP	UL LISTED SF JIS	9.0	22.3	9.3	690-350-01440								8-5NS JP	UL LISTED SF	6.4	12.0	23.8		9.3																	8.5							7.1	4.5	1.2	単線:2.89~3.65mm より線:6.64~10.52mm AWG:#8	3,500個 (35箱)	100個 (1箱)	690-350-01450	R 8-6 JP	UL LISTED SF JIS						9.6	22.6	9.3			690-350-01460	8-6NS JP	UL LISTED SF	8.4	15.0	29.8	13.8														8.5	7.1	4.5	1.2	単線:2.89~3.65mm より線:6.64~10.52mm AWG:#8	3,500個 (35箱)	100個 (1箱)		690-350-01470	R 8-8 JP	UL LISTED SF JIS	11.5	28.1	13.8									690-350-01480	8-8NS JP	UL LISTED SF	10.5	15.0											29.8	13.8	8.5	7.1	4.5	1.2						単線:2.89~3.65mm より線:6.64~10.52mm AWG:#8	3,500個 (35箱)	100個 (1箱)	690-350-01490	R 8-10 JP	UL LISTED SF JIS	20.0							33.5	15.0	690-350-02920	8-12 JP	UL LISTED SF	25.00	33.5	15.0	15.0	2,500個 (25箱)																																																																																																																																																																																																																																																																																																																																																																																																																																																																																																																																																															
690-350-01310	R 5.5-4 JP	UL LISTED SF JIS	4.3	7.2	15.7	5.9																									8.5	7.1	4.5						1.2	単線:2.89~3.65mm より線:6.64~10.52mm AWG:#8									3,500個 (35箱)	100個 (1箱)																																																																																																																																																																																																																																																																																																																																																																																																																																																																																																																																																																																																																																																																																																																																																																																																																																																																																																																																																																																																																																																																		
690-350-01320	5.5-S4 JP	UL LISTED SF			8.0	19.1																																										8.3			6.2	690-350-01330										5.5-4NS JP								UL LISTED SF	5.3	9.5	19.8	8.3	8.5	7.1	4.5			1.2	単線:2.89~3.65mm より線:6.64~10.52mm AWG:#8	3,500個 (35箱)	100個 (1箱)						690-350-01340	R 5.5-5 JP	UL LISTED SF JIS	8.0	19.1								8.3									690-350-01350														5.5-5NS JP	UL LISTED SF	6.4	12.0	25.8	13.0	8.5								7.1	4.5	1.2	単線:2.89~3.65mm より線:6.64~10.52mm AWG:#8	3,500個 (35箱)								100個 (1箱)			690-350-01360	R 5.5-6 JP	UL LISTED SF JIS	9.0	24.3	13.0														690-350-01370	5.5-6NS JP	UL LISTED SF	8.4	15.0	28.0	13.7	8.5																					7.1	4.5	1.2	単線:2.89~3.65mm より線:6.64~10.52mm AWG:#8	3,500個 (35箱)	100個 (1箱)																														690-350-01380	R 5.5-8 JP	UL LISTED SF JIS	13.2	22.4							9.0		690-350-01390	5.5-S8 JP	UL LISTED SF	10.5	15.0	28.0	13.7									8.5	7.1	4.5	1.2								単線:2.89~3.65mm より線:6.64~10.52mm AWG:#8	3,500個 (35箱)	100個 (1箱)										690-350-01400	R 5.5-10 JP								UL LISTED SF JIS	19.2	32.4	16.0	690-350-02910	5.5-12 JP	UL LISTED SF	4.3	8.0	21.8	9.3																							8.5	7.1								4.5	1.2	単線:2.89~3.65mm より線:6.64~10.52mm AWG:#8	3,500個 (35箱)	100個 (1箱)	690-350-01410	8-4NS JP	UL LISTED SF	12.0	23.8				9.3										690-350-01420	8-4 JP	UL LISTED SF	5.3	12.0	23.8															9.3	8.5	7.1	4.5	1.2	単線:2.89~3.65mm より線:6.64~10.52mm AWG:#8	3,500個 (35箱)								100個 (1箱)	690-350-01430	R 8-5 JP	UL LISTED SF JIS	9.0		22.3	9.3																													690-350-01440	8-5NS JP	UL LISTED SF						6.4	12.0	23.8			9.3	8.5	7.1	4.5	1.2	単線:2.89~3.65mm より線:6.64~10.52mm AWG:#8	3,500個 (35箱)	100個 (1箱)								690-350-01450	R 8-6 JP	UL LISTED SF JIS	9.6	22.6								9.3	690-350-01460	8-6NS JP	UL LISTED SF	8.4	15.0	29.8									13.8	8.5	7.1	4.5	1.2											単線:2.89~3.65mm より線:6.64~10.52mm AWG:#8	3,500個 (35箱)													100個 (1箱)	690-350-01470	R 8-8 JP	UL LISTED SF JIS			11.5	28.1	13.8	690-350-01480	8-8NS JP	UL LISTED SF	10.5	15.0	29.8	13.8	8.5	7.1	4.5	1.2					単線:2.89~3.65mm より線:6.64~10.52mm AWG:#8	3,500個 (35箱)	100個 (1箱)	690-350-01490	R 8-10 JP	UL LISTED SF JIS	20.0	33.5	15.0	690-350-02920				8-12 JP	UL LISTED SF	25.00	33.5	15.0	15.0	2,500個 (25箱)																																																																																																																																																																																																																																																																																																																																																																																																																																																																																																																																							
690-350-01330	5.5-4NS JP	UL LISTED SF	5.3	9.5	19.8	8.3																																										8.5			7.1	4.5										1.2								単線:2.89~3.65mm より線:6.64~10.52mm AWG:#8			3,500個 (35箱)	100個 (1箱)																																																																																																																																																																																																																																																																																																																																																																																																																																																																																																																																																																																																																																																																																																																																																																																																																																																																																																																																																																																																																																										
690-350-01340	R 5.5-5 JP	UL LISTED SF JIS			8.0	19.1																																																																	8.3	690-350-01350						5.5-5NS JP	UL LISTED SF										6.4	12.0	25.8	13.0	8.5								7.1									4.5							1.2	単線:2.89~3.65mm より線:6.64~10.52mm AWG:#8	3,500個 (35箱)					100個 (1箱)	690-350-01360	R 5.5-6 JP	UL LISTED SF JIS	9.0	24.3							13.0	690-350-01370																5.5-6NS JP	UL LISTED SF	8.4	15.0	28.0	13.7														8.5	7.1	4.5	1.2	単線:2.89~3.65mm より線:6.64~10.52mm AWG:#8	3,500個 (35箱)	100個 (1箱)																																				690-350-01380	R 5.5-8 JP	UL LISTED SF JIS								13.2	22.4								9.0	690-350-01390	5.5-S8 JP	UL LISTED SF	10.5	15.0	28.0							13.7		8.5	7.1	4.5	1.2	単線:2.89~3.65mm より線:6.64~10.52mm AWG:#8	3,500個 (35箱)	100個 (1箱)																																690-350-01400	R 5.5-10 JP								UL LISTED SF JIS	19.2	32.4	16.0	690-350-02910	5.5-12 JP	UL LISTED SF	4.3	8.0	21.8	9.3																																					8.5	7.1	4.5	1.2	単線:2.89~3.65mm より線:6.64~10.52mm AWG:#8				3,500個 (35箱)										100個 (1箱)	690-350-01410	8-4NS JP	UL LISTED SF	12.0	23.8															9.3															690-350-01420	8-4 JP	UL LISTED SF	5.3		12.0	23.8	9.3	8.5															7.1	4.5	1.2	単線:2.89~3.65mm より線:6.64~10.52mm AWG:#8	3,500個 (35箱)								100個 (1箱)	690-350-01430	R 8-5 JP						UL LISTED SF JIS	9.0	22.3			9.3															690-350-01440	8-5NS JP	UL LISTED SF	6.4	12.0								23.8	9.3	8.5	7.1	4.5	1.2	単線:2.89~3.65mm より線:6.64~10.52mm AWG:#8									3,500個 (35箱)																					100個 (1箱)	690-350-01450	R 8-6 JP	UL LISTED SF JIS	9.6					22.6	9.3	690-350-01460	8-6NS JP	UL LISTED SF	8.4	15.0	29.8	13.8	8.5	7.1	4.5	1.2	単線:2.89~3.65mm より線:6.64~10.52mm AWG:#8	3,500個 (35箱)												100個 (1箱)	690-350-01470	R 8-8 JP	UL LISTED SF JIS	11.5	28.1	13.8				690-350-01480	8-8NS JP	UL LISTED SF	10.5	15.0	29.8	13.8											8.5	7.1	4.5	1.2	単線:2.89~3.65mm より線:6.64~10.52mm AWG:#8	3,500個 (35箱)	100個 (1箱)	690-350-01490	R 8-10 JP	UL LISTED SF JIS	20.0	33.5	15.0	690-350-02920	8-12 JP	UL LISTED SF	25.00	33.5	15.0	15.0	2,500個 (25箱)																																																																																																																																																																																																																																																																																																																																																																																																																																																																																																								
690-350-01350	5.5-5NS JP	UL LISTED SF	6.4	12.0	25.8	13.0																																																																	8.5	7.1						4.5	1.2												単線:2.89~3.65mm より線:6.64~10.52mm AWG:#8	3,500個 (35箱)																												100個 (1箱)																																																																																																																																																																																																																																																																																																																																																																																																																																																																																																																																																																																																																																																																																																																																																																																																																																																																																																																																																																																												
690-350-01360	R 5.5-6 JP	UL LISTED SF JIS			9.0	24.3																																																																																			13.0	690-350-01370																															5.5-6NS JP				UL LISTED SF	8.4	15.0	28.0	13.7							8.5	7.1																4.5	1.2	単線:2.89~3.65mm より線:6.64~10.52mm AWG:#8	3,500個 (35箱)	100個 (1箱)	690-350-01380																						R 5.5-8 JP	UL LISTED SF JIS																	13.2															22.4	9.0	690-350-01390	5.5-S8 JP								UL LISTED SF	10.5								15.0	28.0	13.7	8.5	7.1	4.5	1.2							単線:2.89~3.65mm より線:6.64~10.52mm AWG:#8																															3,500個 (35箱)									100個 (1箱)	690-350-01400								R 5.5-10 JP	UL LISTED SF JIS	19.2	32.4	16.0	690-350-02910	5.5-12 JP	UL LISTED SF	4.3	8.0	21.8																					9.3								8.5	7.1	4.5																						1.2	単線:2.89~3.65mm より線:6.64~10.52mm AWG:#8		3,500個 (35箱)	100個 (1箱)	690-350-01410	8-4NS JP	UL LISTED SF															12.0															23.8	9.3	690-350-01420	8-4 JP		UL LISTED SF	5.3	12.0																					23.8								9.3	8.5						7.1	4.5	1.2			単線:2.89~3.65mm より線:6.64~10.52mm AWG:#8															3,500個 (35箱)	100個 (1箱)	690-350-01430	R 8-5 JP	UL LISTED SF JIS								9.0	22.3																																				9.3	690-350-01440	8-5NS JP	UL LISTED SF					6.4	12.0	23.8	9.3	8.5	7.1	4.5	1.2	単線:2.89~3.65mm より線:6.64~10.52mm AWG:#8																			3,500個 (35箱)	100個 (1箱)	690-350-01450	R 8-6 JP	UL LISTED SF JIS	9.6		22.6	9.3	690-350-01460	8-6NS JP	UL LISTED SF	8.4	15.0	29.8	13.8	8.5	7.1	4.5	1.2	単線:2.89~3.65mm より線:6.64~10.52mm AWG:#8													3,500個 (35箱)	100個 (1箱)	690-350-01470	R 8-8 JP	UL LISTED SF JIS	11.5	28.1	13.8	690-350-01480	8-8NS JP	UL LISTED SF	10.5	15.0	29.8	13.8	8.5	7.1	4.5	1.2	単線:2.89~3.65mm より線:6.64~10.52mm AWG:#8	3,500個 (35箱)	100個 (1箱)	690-350-01490	R 8-10 JP	UL LISTED SF JIS	20.0	33.5	15.0	690-350-02920	8-12 JP	UL LISTED SF	25.00	33.5	15.0	15.0	2,500個 (25箱)																																																																																																																																																																																																																																																																																																																																																																																																																																																																																		
690-350-01370	5.5-6NS JP	UL LISTED SF	8.4	15.0	28.0	13.7					8.5	7.1	4.5																																																																												1.2	単線:2.89~3.65mm より線:6.64~10.52mm AWG:#8																															3,500個 (35箱)				100個 (1箱)																																																																																																																																																																																																																																																																																																																																																																																																																																																																																																																																																																																																																																																																																																																																																																																																																																																																																																																																																																																							
690-350-01380	R 5.5-8 JP	UL LISTED SF JIS			13.2	22.4																																				9.0	690-350-01390	5.5-S8 JP	UL LISTED SF	10.5	15.0														28.0																																											13.7	8.5	7.1	4.5	1.2	単線:2.89~3.65mm より線:6.64~10.52mm AWG:#8														3,500個 (35箱)			100個 (1箱)	690-350-01400	R 5.5-10 JP	UL LISTED SF JIS																													19.2						32.4	16.0	690-350-02910	5.5-12 JP	UL LISTED SF	4.3											8.0	21.8	9.3		8.5													7.1	4.5															1.2	単線:2.89~3.65mm より線:6.64~10.52mm AWG:#8	3,500個 (35箱)	100個 (1箱)								690-350-01410	8-4NS JP		UL LISTED SF	12.0	23.8	9.3	690-350-01420	8-4 JP	UL LISTED SF	5.3	12.0												23.8																															9.3	8.5								7.1	4.5	1.2	単線:2.89~3.65mm より線:6.64~10.52mm AWG:#8	3,500個 (35箱)	100個 (1箱)	690-350-01430	R 8-5 JP	UL LISTED SF JIS	9.0	22.3	9.3	690-350-01440	8-5NS JP	UL LISTED SF	6.4	12.0	23.8	9.3																					8.5				7.1	4.5	1.2	単線:2.89~3.65mm より線:6.64~10.52mm AWG:#8														3,500個 (35箱)	100個 (1箱)	690-350-01450														R 8-6 JP	UL LISTED SF JIS	9.6															22.6									9.3	690-350-01460	8-6NS JP	UL LISTED SF	8.4		15.0	29.8	13.8	8.5		7.1	4.5	1.2					単線:2.89~3.65mm より線:6.64~10.52mm AWG:#8	3,500個 (35箱)															100個 (1箱)								690-350-01470																													R 8-8 JP	UL LISTED SF JIS	11.5								28.1	13.8										690-350-01480	8-8NS JP	UL LISTED SF	10.5																							15.0	29.8	13.8	8.5					7.1	4.5	1.2	単線:2.89~3.65mm より線:6.64~10.52mm AWG:#8																										3,500個 (35箱)	100個 (1箱)	690-350-01490	R 8-10 JP	UL LISTED SF JIS	20.0	33.5	15.0	690-350-02920	8-12 JP	UL LISTED SF	25.00	33.5	15.0						15.0	2,500個 (25箱)																																																																																																																																																																																																																																																																																																																																																																																																																																																																																																																																
690-350-01390	5.5-S8 JP	UL LISTED SF	10.5	15.0	28.0	13.7	8.5	7.1	4.5	1.2				単線:2.89~3.65mm より線:6.64~10.52mm AWG:#8	3,500個 (35箱)	100個 (1箱)																																																																																																																																																																																																																																																																																																																																																																																																																																																																																																																																																																																																																																																																																																																																																																																																																																																																																																																																																																																																																																																																																																				
690-350-01400	R 5.5-10 JP	UL LISTED SF JIS			19.2	32.4																												16.0	690-350-02910	5.5-12 JP	UL LISTED SF	4.3			8.0	21.8	9.3	8.5	7.1	4.5	1.2												単線:2.89~3.65mm より線:6.64~10.52mm AWG:#8		3,500個 (35箱)																							100個 (1箱)	690-350-01410	8-4NS JP	UL LISTED SF	12.0						23.8	9.3									690-350-01420																							8-4 JP	UL LISTED SF	5.3		12.0	23.8	9.3	8.5	7.1								4.5	1.2														単線:2.89~3.65mm より線:6.64~10.52mm AWG:#8						3,500個 (35箱)	100個 (1箱)	690-350-01430	R 8-5 JP	UL LISTED SF JIS	9.0											22.3	9.3	690-350-01440			8-5NS JP	UL LISTED SF	6.4	12.0	23.8	9.3	8.5																											7.1	4.5	1.2	単線:2.89~3.65mm より線:6.64~10.52mm AWG:#8	3,500個 (35箱)	100個 (1箱)	690-350-01450	R 8-6 JP	UL LISTED SF JIS	9.6	22.6	9.3	690-350-01460	8-6NS JP	UL LISTED SF	8.4	15.0	29.8												13.8																				8.5	7.1	4.5	1.2	単線:2.89~3.65mm より線:6.64~10.52mm AWG:#8	3,500個 (35箱)	100個 (1箱)					690-350-01470															R 8-8 JP	UL LISTED SF JIS	11.5	28.1	13.8	690-350-01480	8-8NS JP	UL LISTED SF	10.5	15.0	29.8	13.8	8.5					7.1	4.5	1.2	単線:2.89~3.65mm より線:6.64~10.52mm AWG:#8		3,500個 (35箱)	100個 (1箱)	690-350-01490																																R 8-10 JP		UL LISTED SF JIS	20.0	33.5	15.0	690-350-02920	8-12 JP							UL LISTED SF	25.00	33.5		15.0													15.0							2,500個 (25箱)																																																																																																																																																																																																																																																																																																																																																																																																																																																																																																																																																																																																																																																																																																																	
690-350-02910	5.5-12 JP	UL LISTED SF	4.3	8.0	21.8	9.3											8.5	7.1	4.5	1.2	単線:2.89~3.65mm より線:6.64~10.52mm AWG:#8	3,500個 (35箱)	100個 (1箱)																																																																																																																																																																																																																																																																																																																																																																																																																																																																																																																																																																																																																																																																																																																																																																																																																																																																																																																																																																																																																																																																																													
690-350-01410	8-4NS JP	UL LISTED SF			12.0	23.8																												9.3	690-350-01420	8-4 JP	UL LISTED SF	5.3			12.0	23.8	9.3										8.5	7.1	4.5	1.2	単線:2.89~3.65mm より線:6.64~10.52mm AWG:#8	3,500個 (35箱)		100個 (1箱)																									690-350-01430	R 8-5 JP	UL LISTED SF JIS	9.0						22.3	9.3	690-350-01440	8-5NS JP	UL LISTED SF	6.4	12.0		23.8	9.3	8.5																							7.1	4.5	1.2		単線:2.89~3.65mm より線:6.64~10.52mm AWG:#8	3,500個 (35箱)	100個 (1箱)												690-350-01450	R 8-6 JP	UL LISTED SF JIS	9.6	22.6		9.3	690-350-01460														8-6NS JP	UL LISTED SF	8.4	15.0											29.8	13.8	8.5	7.1		4.5	1.2	単線:2.89~3.65mm より線:6.64~10.52mm AWG:#8	3,500個 (35箱)	100個 (1箱)	690-350-01470		R 8-8 JP	UL LISTED SF JIS	11.5	28.1	13.8			690-350-01480																		8-8NS JP							UL LISTED SF	10.5	15.0	29.8	13.8	8.5	7.1	4.5	1.2	単線:2.89~3.65mm より線:6.64~10.52mm AWG:#8	3,500個 (35箱)	100個 (1箱)					690-350-01490	R 8-10 JP	UL LISTED SF JIS	20.0	33.5	15.0		690-350-02920													8-12 JP																		UL LISTED SF		25.00	33.5	15.0	15.0	2,500個 (25箱)																																																																																																																																																																																																																																																																																																																																																																																																																																																																																																																																																																																																																																																																																																																																																																																																																								
690-350-01420	8-4 JP	UL LISTED SF	5.3	12.0	23.8	9.3																		8.5	7.1	4.5	1.2	単線:2.89~3.65mm より線:6.64~10.52mm AWG:#8	3,500個 (35箱)	100個 (1箱)																																																																																																																																																																																																																																																																																																																																																																																																																																																																																																																																																																																																																																																																																																																																																																																																																																																																																																																																																																																																																																																																																						
690-350-01430	R 8-5 JP	UL LISTED SF JIS			9.0	22.3																												9.3	690-350-01440	8-5NS JP	UL LISTED SF	6.4			12.0	23.8	9.3																				8.5	7.1	4.5	1.2	単線:2.89~3.65mm より線:6.64~10.52mm AWG:#8	3,500個 (35箱)	100個 (1箱)																690-350-01450	R 8-6 JP	UL LISTED SF JIS	9.6						22.6	9.3	690-350-01460	8-6NS JP	UL LISTED SF	8.4	15.0		29.8	13.8								8.5	7.1	4.5	1.2	単線:2.89~3.65mm より線:6.64~10.52mm AWG:#8	3,500個 (35箱)						100個 (1箱)																							690-350-01470	R 8-8 JP	UL LISTED SF JIS	11.5	28.1		13.8	690-350-01480							8-8NS JP	UL LISTED SF	10.5	15.0	29.8			13.8	8.5	7.1	4.5	1.2	単線:2.89~3.65mm より線:6.64~10.52mm AWG:#8									3,500個 (35箱)	100個 (1箱)									690-350-01490		R 8-10 JP	UL LISTED SF JIS	20.0	33.5	15.0			690-350-02920							8-12 JP	UL LISTED SF	25.00	33.5	15.0	15.0	2,500個 (25箱)																																																																																																																																																																																																																																																																																																																																																																																																																																																																																																																																																																																																																																																																																																																																																																																																																																																																																																
690-350-01440	8-5NS JP	UL LISTED SF	6.4	12.0	23.8	9.3																									8.5	7.1	4.5	1.2	単線:2.89~3.65mm より線:6.64~10.52mm AWG:#8	3,500個 (35箱)	100個 (1箱)																																																																																																																																																																																																																																																																																																																																																																																																																																																																																																																																																																																																																																																																																																																																																																																																																																																																																																																																																																																																																																																																															
690-350-01450	R 8-6 JP	UL LISTED SF JIS			9.6	22.6																																9.3	690-350-01460	8-6NS JP	UL LISTED SF	8.4	15.0						29.8	13.8																									8.5	7.1	4.5			1.2	単線:2.89~3.65mm より線:6.64~10.52mm AWG:#8	3,500個 (35箱)	100個 (1箱)		690-350-01470	R 8-8 JP	UL LISTED SF JIS	11.5						28.1	13.8	690-350-01480	8-8NS JP	UL LISTED SF	10.5	15.0		29.8	13.8																											8.5								7.1	4.5	1.2	単線:2.89~3.65mm より線:6.64~10.52mm AWG:#8	3,500個 (35箱)			100個 (1箱)	690-350-01490	R 8-10 JP	UL LISTED SF JIS	20.0	33.5	15.0	690-350-02920							8-12 JP	UL LISTED SF	25.00	33.5	15.0			15.0													2,500個 (25箱)																																																																																																																																																																																																																																																																																																																																																																																																																																																																																																																																																																																																																																																																																																																																																																																																																																																																																																																																	
690-350-01460	8-6NS JP	UL LISTED SF	8.4	15.0	29.8	13.8																																8.5	7.1	4.5	1.2							単線:2.89~3.65mm より線:6.64~10.52mm AWG:#8	3,500個 (35箱)	100個 (1箱)																																																																																																																																																																																																																																																																																																																																																																																																																																																																																																																																																																																																																																																																																																																																																																																																																																																																																																																																																																																																																																																																		
690-350-01470	R 8-8 JP	UL LISTED SF JIS			11.5	28.1																																				13.8	690-350-01480								8-8NS JP	UL LISTED SF										10.5								15.0			29.8	13.8											8.5	7.1	4.5	1.2					単線:2.89~3.65mm より線:6.64~10.52mm AWG:#8	3,500個 (35箱)	100個 (1箱)	690-350-01490	R 8-10 JP	UL LISTED SF JIS	20.0	33.5	15.0	690-350-02920	8-12 JP							UL LISTED SF							25.00	33.5	15.0					15.0																						2,500個 (25箱)																																																																																																																																																																																																																																																																																																																																																																																																																																																																																																																																																																																																																																																																																																																																																																																																																																																																																																																																																																		
690-350-01480	8-8NS JP	UL LISTED SF	10.5	15.0	29.8	13.8																																				8.5	7.1								4.5	1.2																			単線:2.89~3.65mm より線:6.64~10.52mm AWG:#8	3,500個 (35箱)	100個 (1箱)																																																																																																																																																																																																																																																																																																																																																																																																																																																																																																																																																																																																																																																																																																																																																																																																																																																																																																																																																																																																																																											
690-350-01490	R 8-10 JP	UL LISTED SF JIS			20.0	33.5																																																								15.0								690-350-02920				8-12 JP				UL LISTED SF	25.00												33.5	15.0				15.0	2,500個 (25箱)																																																																																																																																																																																																																																																																																																																																																																																																																																																																																																																																																																																																																																																																																																																																																																																																																																																																																																																																																																																																																			
690-350-02920	8-12 JP	UL LISTED SF	25.00	33.5	15.0	15.0					2,500個 (25箱)																																																																																																																																																																																																																																																																																																																																																																																																																																																																																																																																																																																																																																																																																																																																																																																																																																																																																																																																																																																																																																																																																																									

- 01 照明
- 02 計測器
- 03 工具
- 04 安全用品
- 05 パテ類
- 06 空調部材
- 07 設備部材
- 08 配線器具類
- 09 配管配線材
- 10 装柱器材
- 11 制御機器類
- 12 盤用資材
- 13 絶縁処理材
- 14 ケーブル類
- 15 ケーブル用 防災製品