



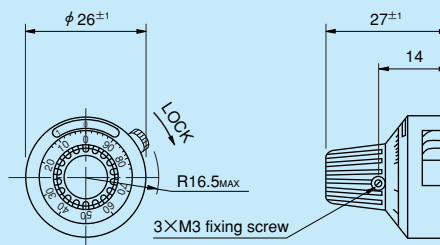
Model MB10-25B



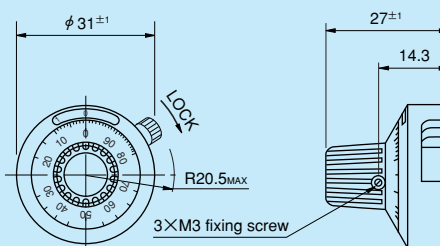
Model MB10-30B

Standard Dimensions

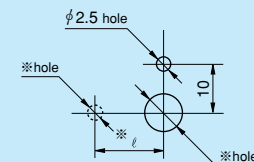
Model MB10-25B



Model MB10-30B



Panel Arrangements



Note: The dimensions mark ※ are determined by the pot. to be mounted.

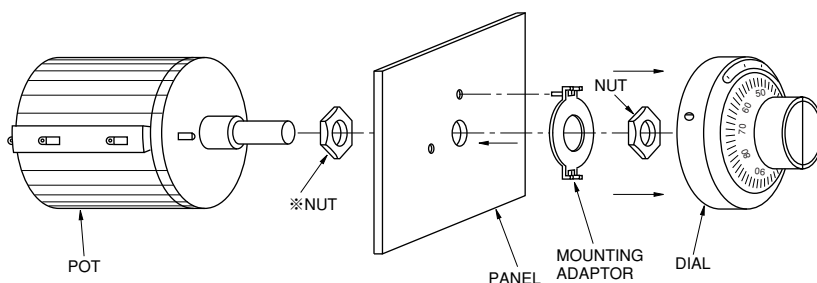
General Specifications

Model No	Number of Turns-Counting.	Matching Shaft Dia. (mm)		Combinable Helicalohm Pot. (Matching shaft length of 25mm)	Lock Device	Operating Temperature Range	Mass (Approx. g)
		Standard	Special				
MB10-25B	10	4, 6	3, 3.175 6.35	10HP 20HP 12HHP 12HP 25HP 20HHP 12HPC 46HD	YES	−30°C ~ +60°C	20
MB10-30B	10	4, 6	3, 3.175 6.35		YES	−30°C ~ +60°C	20

Special Specifications Available

Special colors on housing and spin plate on the top of the knob (Black, etc.).

How to mount MB Series



Note: The nut with a mark ※ is not always used depending on the kind of potentiometer and the thickness of the panel to be mounted.

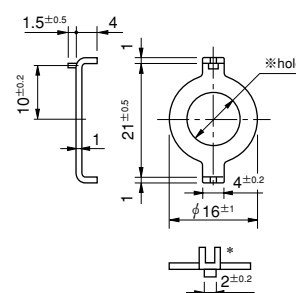
In case of mounting Model **MB** Series counting dials on Helicalohm pot., the mounting adaptor of these counting dials and Helicalohm potentiometers are fixed on the panel according to the illustration given above. The shaft of the Helicalohm pot. is turned anticlockwise

to its limit and is put into the mounting hole of the dial which was already set at "0". The shaft of the Helicalohm pot. is secured by the screw positioned on the knob of the dial. With this, the mounting is completed.

Mounting Adaptor for use with MB Series

The inner diameters of the mounting adaptor is different to the diameters of the shaft of the potentiometers to be mounted and therefore, please use the mounting adaptor supplied with the dial. When mounting the dial on potentiometer, the 2-finger projections (*) of mounting adaptor are inserted in the holes on the base plate, by adjusting the gap between 2-finger projection (*) with a screw-driver. There is possibility where some irregular turns of dial may take place if the adjustment of this gap is insufficient.

For Model MB



Note: The dimensions of mark ※ are determined by the potentiometer to be mounted.