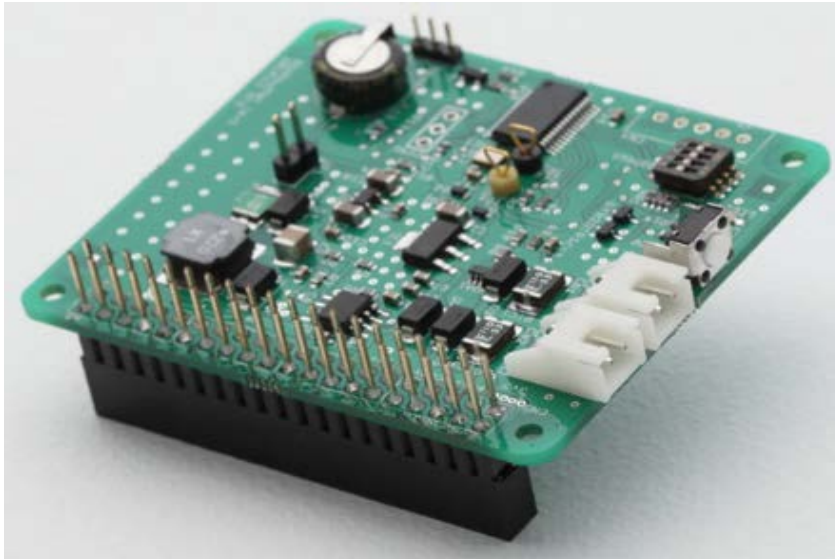


## POWER MANAGEMENT MODULE slee-Pi2

RS Stock No.  
Mfr. Part No.  
Brand

MTSLP0N00X01  
Mechatrax



### Product Details

### POWER MANAGEMENT MODULE slee-Pi2

This product is the power management module for Raspberry Pi. It provides stable monitorable power through pin sockets. In addition, dedicated tools that run on Linux are also provided, making it easy to use in scripts and others. By supplying power to the Raspberry Pi from this module via pin socket instead of microUSB, stable operation with embedded equipment is possible.

Built-in real-time clock (RTC) that runs with low power consumption, you can start the lasp pie from the power off state at the specified date and time. Intermittent operation (timer operation) such as start / end at 10-minute intervals can be easily done by only writing with script etc.

Standby power consumption is about 20 uA, low power consumption operation is possible with intermittent operation

The main body power consumption is about 20 uA, and it is possible to wait for a long time with batteries etc. Low power consumption operation is realized by performing intermittent operation, such as when you want to run a system using Razpai only with a battery.

※ In our trial calculation, power consumption is about 20% (80% reduction) in case of intermittent operation at 10 minute interval! It is!

Alive monitoring of the Raspberry Pi and automatic power up is available.

It monitors continuously running software, Raspberry Pi body heartbeat and power supply voltage. Forced power on / off in the absence of reaction can be executed, so if the degree of power supply restart at the time of malfunction is not enough, it is unnecessary to perform on-site work and automation is possible.

Contributing to miniaturization of solar panel + accumulator during outdoor operation!

It is compatible with a wide range of DC 6 to 35 V power supply, and it is easy to connect with solar panels, storage batteries, and solar charge / discharge controller (charge controller). With low power consumption operation in intermittent operation, it is possible to optimize (size down) the capacity of solar panel + storage battery.

Power Management Function	Power Management Unit
Kit Classification	Expansion Board
For Use With	Raspberry Pi
Featured Device	-
Kit Name	Slee-Pi2