



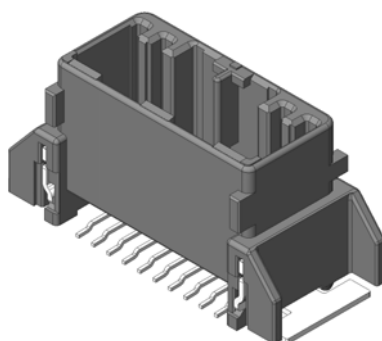
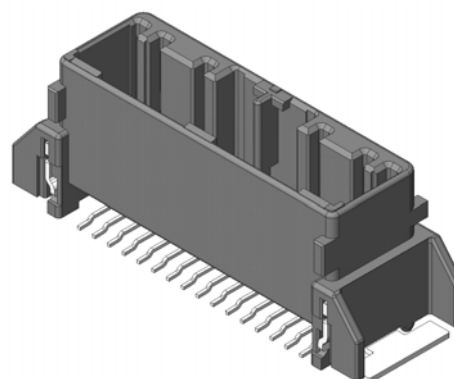
Compact SMT Type Automotive Connectors

CONNECTOR

MB-0180-1

MX34R Series

February 2008

RoHS Compliant20 pos.32 pos.

An SMT (Surface Mount Technology) type has been added to the automotive use MX34 Series. The new type is a straight pin-header available in 20-position and 32-position. It adopts PPS as the housing resin to withstand the reflow mounting temperature. Screws are not necessary due to the hold-downs equipped on both sides for board mounting.

Features

- Compact straight SMT type with double row staggered 2.2 mm side pitch.
(Available in 20-position and 32-position.)
- Fixed to board by hold-downs on both sides, screw mounting is not necessary.
- Can be mated with existing MX34 Series socket connector.
- Adopts heat resistant PPS resin and is compatible with soldering by reflow mounting.
- Soldering area of terminal appears on both sides of the connector so soldering can be easily confirmed.
- With a shape that has a consideration for pick-and-place by automated mounting.

General Specifications

- | | |
|---|--|
| • Rated Current: 3A | • Insulation Resistance:
100M ohm min |
| • Contact Resistance:
5m ohm max. (initial) | • Durability: 50 mating cycles |
| • Dielectric Withstanding Voltage:
AC 1000V (per minute) | • Applicable Board Thickness: t1.6 mm |
| • Operating Temperature:
-40 Deg. C to +85 Deg. C | |

■Pinheader

Materials and Finishes

Components	Materials and Finishes
Housing	PPS GF40
Pin terminal	Copper alloy/ Sn plating over Ni
Hold-down	Brass/ Sn plating over Ni

Part Number and SJ Drawing

No. of Contacts	Part Number	SJ Drawing
20	MX34R20VF1	SJ106351
32	MX34R32VF1	SJ106352

* Connectors for the opposite side (for reference)

■Socket Housing

No. of Contacts	Part Number	SJ Drawing
20	MX34020SF1	SJ038752
32	MX34032SF1	SJ038756

■Socket Contact

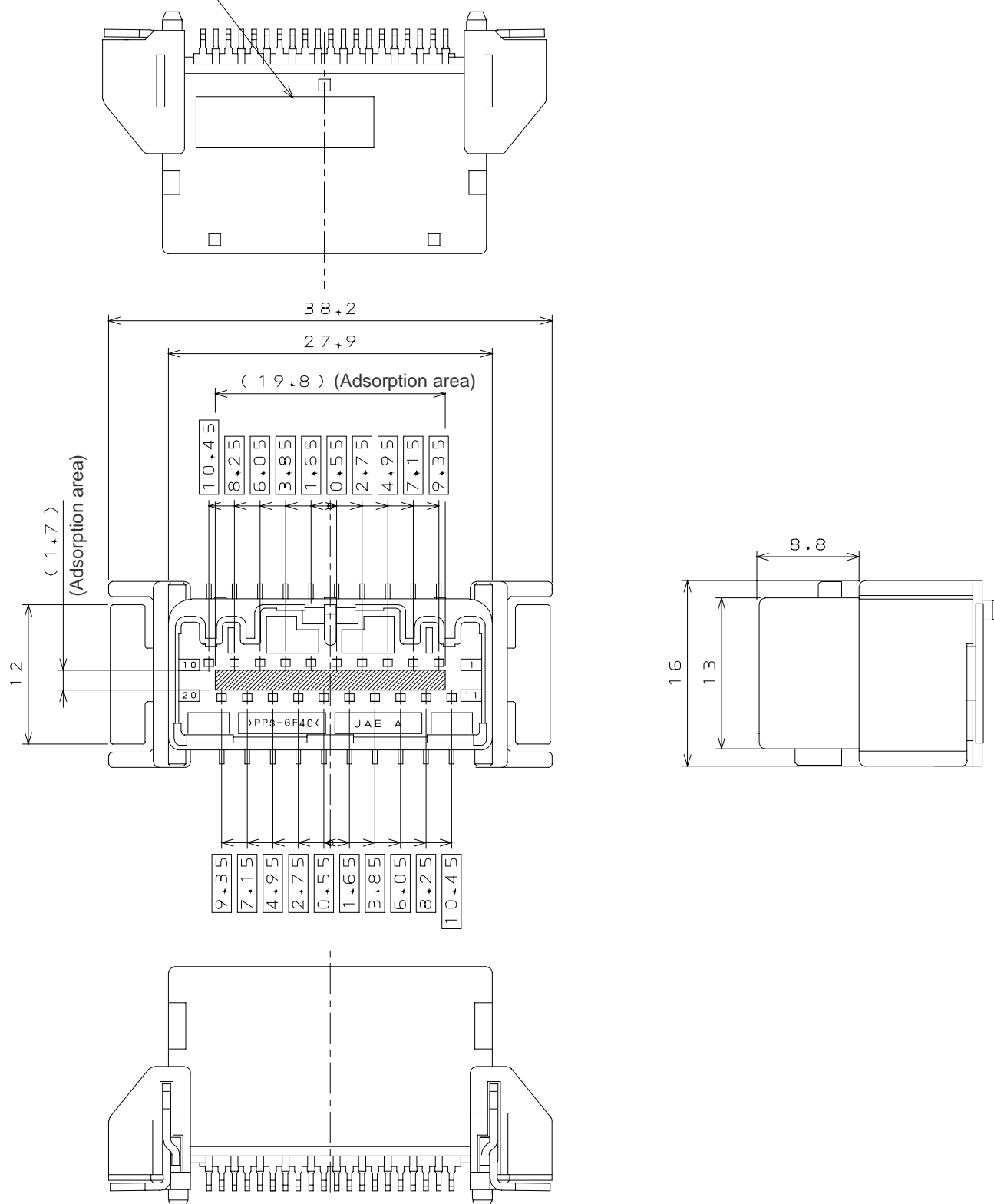
Part Number	Applicable Wire	SJ Drawing
M34S75C4F1	AVSS0.3mm ² , CHFUS0.22mm ² ~0.35mm ²	SJ038527
M34S75C4F2	AVSS0.5mm ² , CHFUS0.5mm ² ~0.75mm ²	SJ038528
M34S75C4F3	CAN SD 0.35mm ² (note1)	SJ038747
M34S75C4F4	AVSS0.85mm ² (note2)	SJ038893

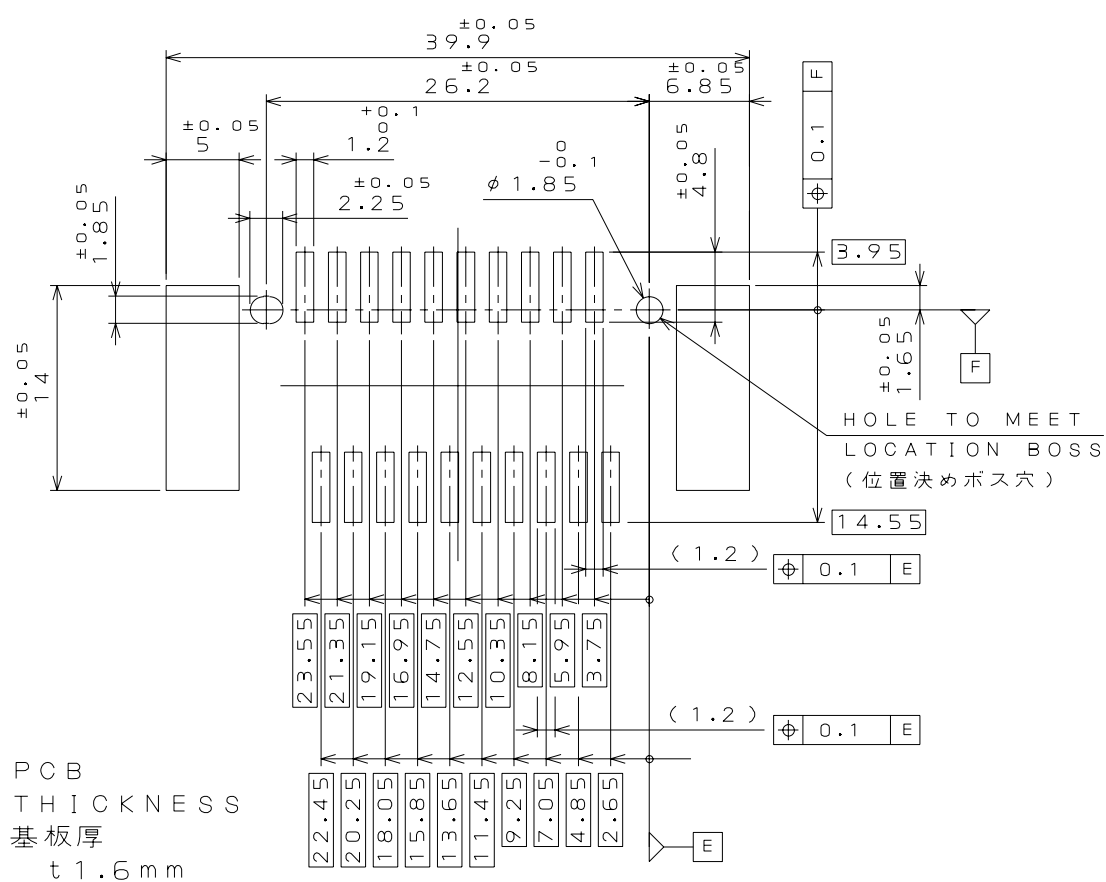
Note 1: M34S75CF3 and M34S75CF4 can only be inserted in double row cavities on both ends, four housing cavities in total.

Outer Dimensions

■ MX34R20VF1 (SJ Drawing: SJ106351)

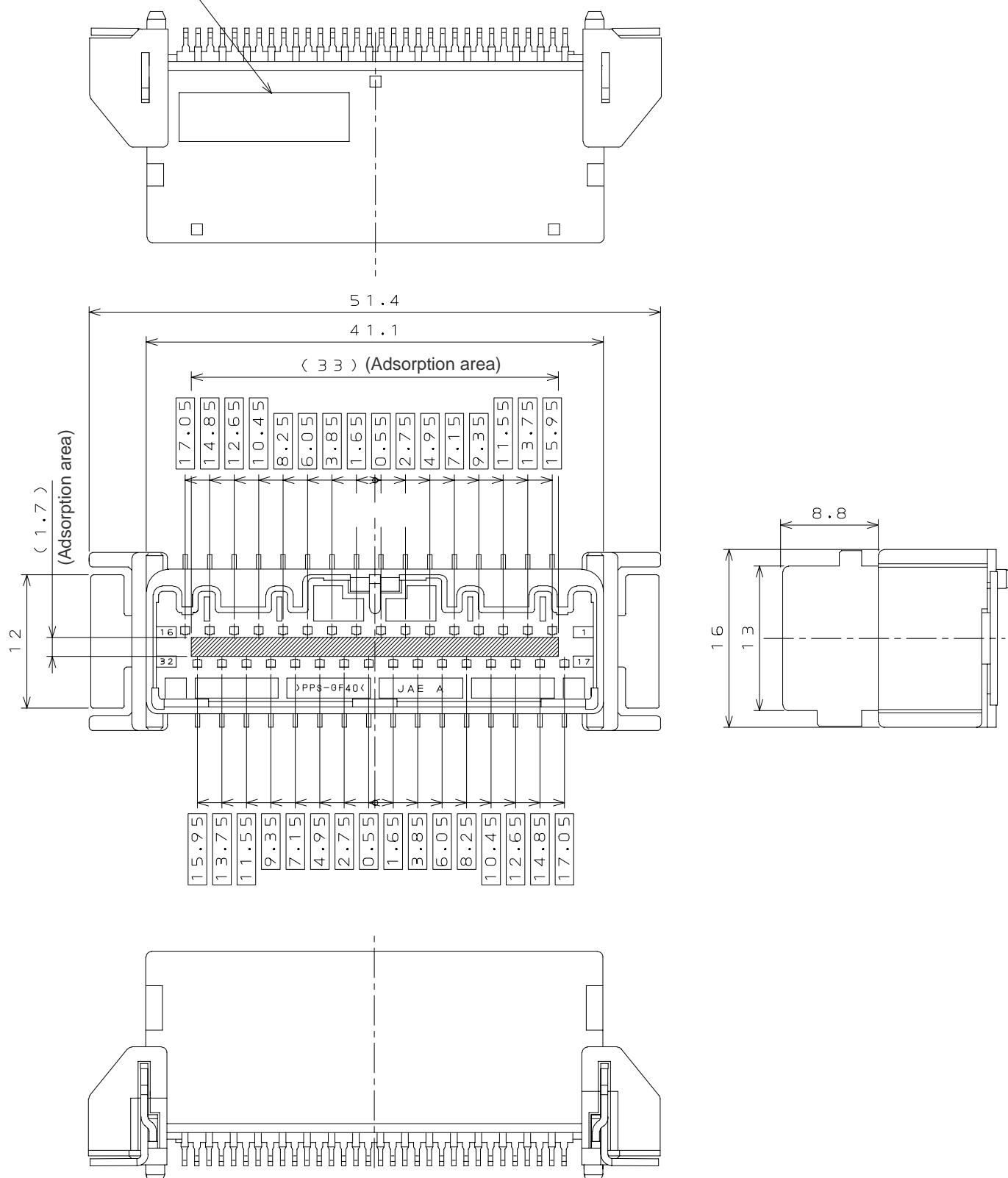
Assembly Lot No.

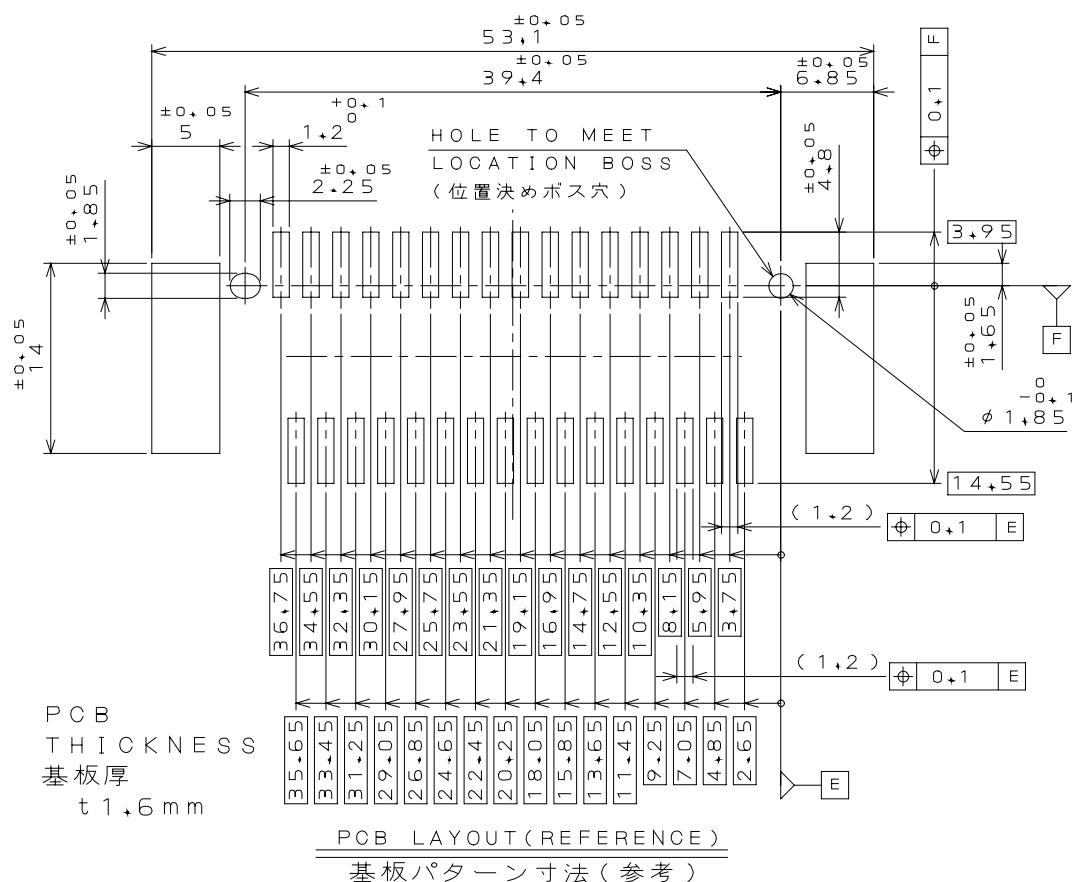




■ MX34R32VF1 (SJ Drawing: SJ106352)

Assembly Lot No.





Others

Specification

JACS-1754-10

Handling Instructions

JACS-1754

Japan Aviation Electronics Industry, Limited

Product Marketing Division
Aobadai Building, 3-1-19, Aobadai, Meguro-ku, Tokyo 153-8539
Phone: +81-3-3780-2787 FAX: +81-3-3780-2946

Notice: Products shown in this leaflet are made for the applications listed below. However, if the above-mentioned products are to be used in aerospace devices, marine cable-connection devices, atomic power control systems, medical equipment for life-support systems, or any other specific application requiring extremely high reliability, please contact JAE for further information.

Recommended applications: Computers, Office machines, Measuring devices, Telecommunication devices (Terminals, Mobile devices), AV devices, Household applications, FA devices, etc.