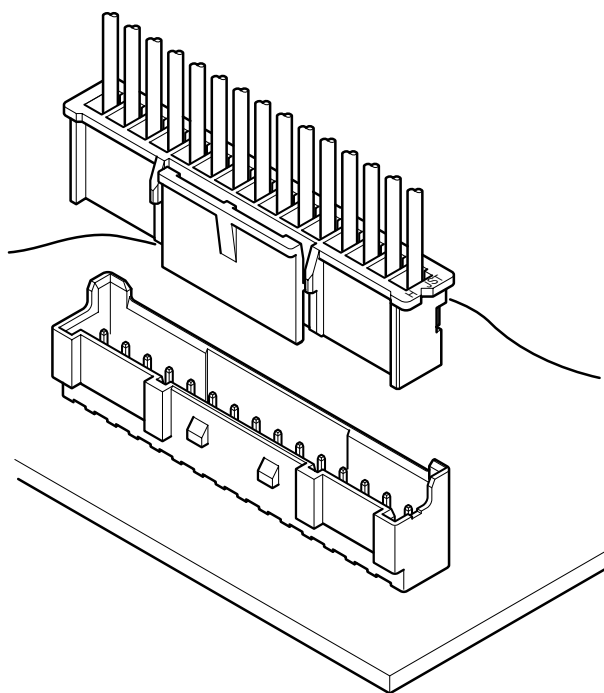


PA CONNECTOR

Disconnectable Crimp style connectors



Features

• Locking device

The housing has a locking device to securely hold the header, preventing accidental disconnection because of external forces that might result from the routing of wires during assembly process or of vibration.

• Reliable contacts

The box contact supplies stable contact performance even under conditions of vibration, distortion, low voltage or low current.

• Low insertion force

Header pins are reflow-treated, which provides low insertion force.

• Insertion guide mechanism

Header has housing insertion guides for easy and secure insertion.

• Flanged press pin

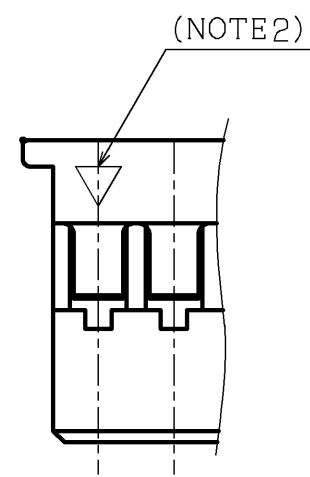
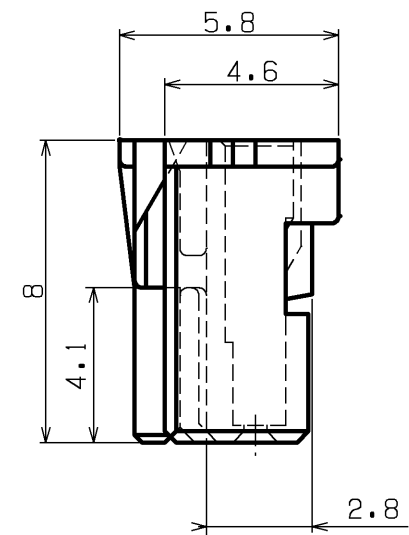
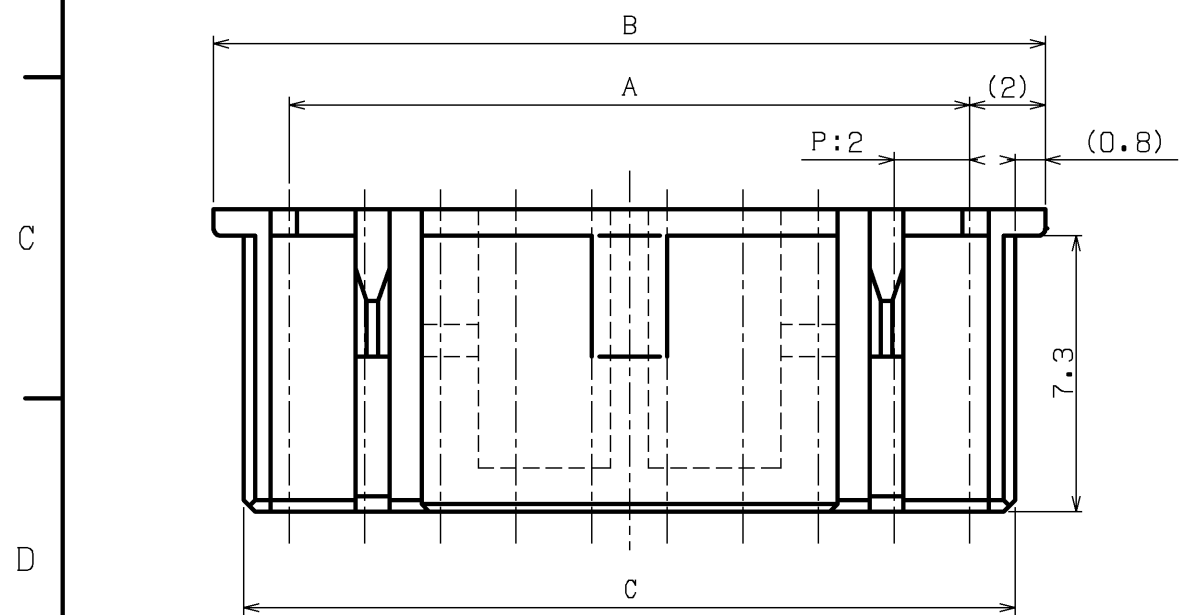
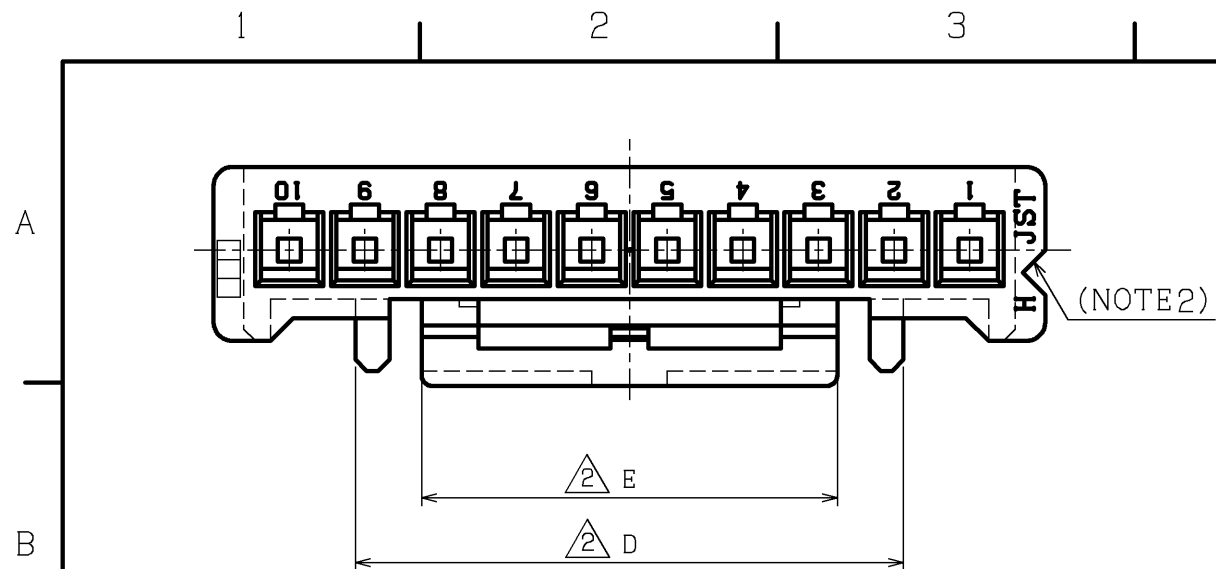
Top entry type header has flanged press pins, preventing accidental removal of the pins that might result from the distorted unmating especially in the case of small no. of circuits.

• Polarizing boss

Top entry type headers with polarizing bosses are also available.

Specifications

- Current rating: 3A AC, DC (AWG#22)
 - Voltage rating: 250V AC, DC
 - Temperature range: -25°C to +85°C
(including temperature rise in applying electrical current)
 - Relative humidity: 0 to 80%
 - Contact resistance: Initial value/10m Ω max.
After environmental testing/20m Ω max.
 - Insulation resistance: 1,000M Ω min.
 - Withstanding voltage: 800V AC/minute
 - Applicable wire: AWG #28 to #22
 - Applicable PC board thickness: 1.6mm(.063")
- * Contact JST for details.




REV.	DESCRIPTION	DATE	DESIGNED
1	Circuits are added.	JUL.14.1999	D.AIMOTO
2	Dimensions are added.	JUN.25.2002	M.ISHIGAMI

NOTE
1.Unless otherwise specified,
tolerances are $0 < L \leq 5.0 : \pm 0.3$
 $5.0 < L : \pm 0.4$
2.Indicating hole No.1

Color	Part No.
Natural (White)	PAP- () V-S
Black	PAP- () V-K

Cir- cuits	Dimensions				
	A	B	C	D $\triangle 2$	E $\triangle 2$
10	18.0	22.0	20.4	14.5	11.0
11	20.0	24.0	22.4	14.5	11.0
12	22.0	26.0	24.4	14.5	11.0
13	24.0	28.0	26.4	14.5	11.0
14	26.0	30.0	28.4	14.5	11.0
15	28.0	32.0	30.4	14.5	11.0

		HOUSING		66NYLON				UL94V-0	
No.		PART NAME		MATERIAL		SURFACE FINISH		REMARKS	
SIZE	UNIT	SCALE	PROJECTION	DATE	CUSTOMER				
A3	METRIC	5:1		MAR. 5.1999					
APPROVED		CHECKED		DESIGNED		DRAWN		SERIES NAME	PA CONNECTOR(10~15 circuits)
S.KOYAMA		E.NAKAYAMA		M.ISHIGAMI		N.HIRAIZUMI		PART No.	PAP-()V-()
<div>JST J.S.T.MFG.CO., LTD</div>						DRAWING No.	KRD-22947		R2

THIS DRAWING CONTAINS INFORMATION THAT IS PROPRIETARY TO J.S.T.
AND SHOULD NOT BE USED WITHOUT WRITTEN PERMISSION.

EC4109-2