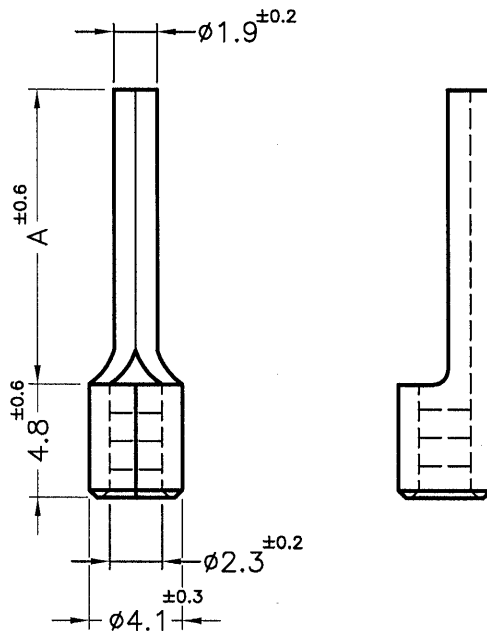


REVISIONS			
REV	DESCRIPTION	DATE	BY




PART NO.	A
PTN2-10	10.0
PTN2-12	12.0
PTN2-13	13.0
PTN2-16	16.0

NOTE: 1. MAXIMUM ELECTRIC CURRENT :  $\frac{A. W. G. | 16 | 14 |}{AMP. | 18 | 30 |}$

符合歐盟ROHS規範 (RoHS Compliant)	
★鉛Pb	<1000PPM
★鎘Cd	< 100PPM
★汞Hg	<1000PPM
★六價鉻Cr6+	<1000PPM
★多溴聯苯類PBBs	<1000PPM
★多溴聯苯醚類PBDEs	<1000PPM

2. WIRE RANGE : 16-14 A. W. G. ( 1.5 - 2.5 mm<sup>2</sup>)
3. SURFACE TREATMENT : TIN PLATED
4. THICKNESS : 0.8 mm

				TITLE	NON-INSULATED PIN TERMINALS	SPEC. DWG.	
				MATERIAL	COPPER	DATE	1998.05.11
				FINISH	SEE ABOVE	DRAWN	JASON
				COLOR		CHECK	<u>Will</u>
PART NUMBER		DRAWING NUMBER		UNLESS OTHERWISE SPECIFIED TOLERANCE		APPROVED	
SEE ABOVE		PTN2-H		SEE ABOVE		<i>Kang</i>	
SIZE	SCALE	UNIT	REV				
A4	NONE	mm	A				