

LOW-COST POWER SHUNT RESISTORS

RH ■ BL

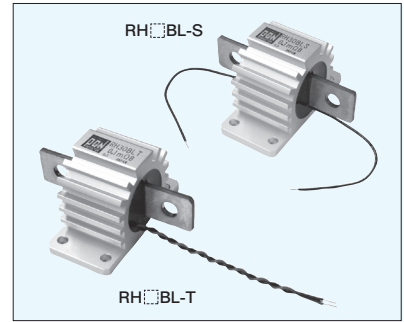
Max. Current (Permanent) : 540A (0.1mΩ)

Type		Load Capacity (W) ※1	Standard Resistance (Ω)	Tolerance (%)	Temp.Coefficient ※2	Internal Heat Resistance	
						Chassis Mounted	Free Air
RH12BL-S	RH12BL-T	12	0.5m	±0.1(B)	±50ppm/°C	8.1°C/W	7.1°C/W
RH15BL-S	RH15BL-T			±0.5(D)		3.6°C/W	2.6°C/W
RH30BL-S	RH30BL-T	30	0.1m	±1(F)		3.7°C/W	2.6°C/W
				±5(J)			

Operating Temp. -50°C~+135°C

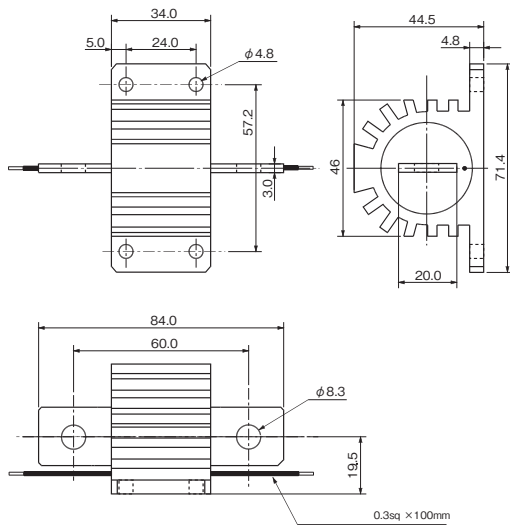
※1 Referring to power derating curve. Proper measures for heat radiation should be taken.

※2 Standard Temp. : 25°C Test Temp. : 0°C, 60°C

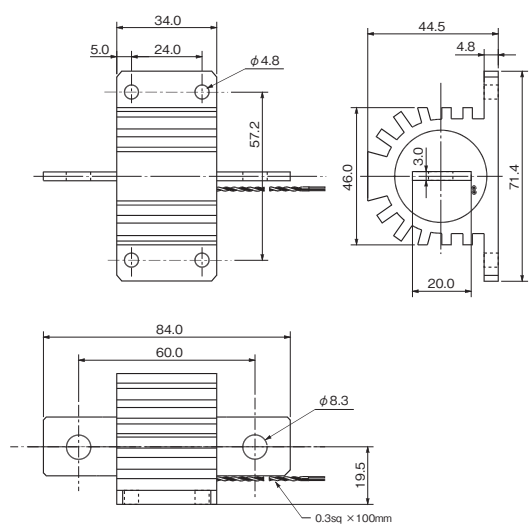


Weight : 186g

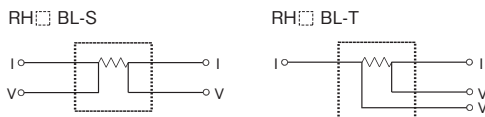
■Dimensions RH ■ BL-S



■Dimensions RH ■ BL-T



Internal circuit of 4 terminal resistors



■Performance

Parameters	Test Condition	Specification
Short Time Over Load	2×Wattage Rating 5sec	±0.2%
Insulation Resistance	DC500V	1000MΩMIN
Dielectric Strength	AC2000V 1min.	±0.1%
High Temperature Exposure	Temp.+85°C 1000Hr (Moisture 85%)	±0.2%
Load Life	Load Rating 1.5Hr ON 0.5Hr OFF Repeat 2000Hr	±0.5%

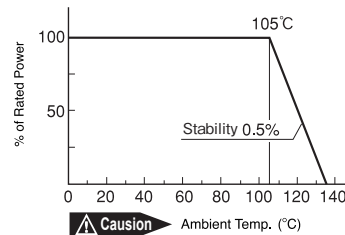
How to order

RH30BL - S 0.1mΩ ±0.1%(B)
 Type Terminal Resistance Tolerance
 S : Straight
 T : Twist

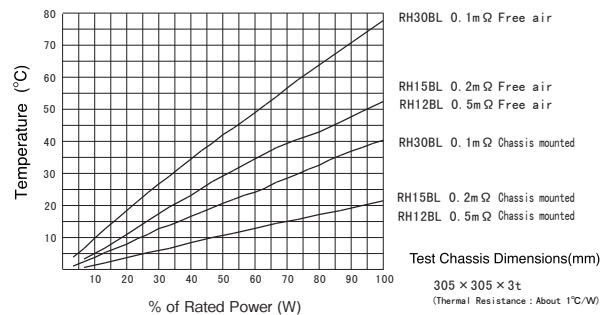
Standard Resistance (Stock)

RH30BL-S	0.1mΩB (±0.1%)	RH30BL-T	0.1mΩB (±0.1%)
RH15BL-S	0.2mΩB (±0.1%)	RH15BL-T	0.2mΩB (±0.1%)
RH12BL-S	0.5mΩB (±0.1%)	RH12BL-T	0.5mΩB (±0.1%)

Power Derating Curve



Surface Temp. Versus Power Load.



RH12BL AWG4 Cable 6× 2
 RH15BL AWG4 Cable 2× 2
 RH30BL AWG4 Cable 1× 2

