

MATERIAL :

BODY,
PRESS CAP &
COUPLING NUT: STAINLESS STEEL PER AMS-5640

LOCK RING
& CONTACT: BERYLLIUM COPPER PER ASTM B196

SLEEVE: BRASS PER ASTM B16

INSULATOR: PTFE PER ASTM D1710

GASKET: SILICONE RUBBER PER ZZ-R-765,
CLASS IIB, GRADE 50/60

RESISTOR ELEMENT: ALUMINA SUBSTRATE WITH
NICHROME RESISTOR

FINISH :

BODY: GOLD PER ASTM B488, TYPE I,
GRADE C, CLASS 1.27; OVER NICKEL
PER AMS-QQ-N-290, CLASS 1

PRESS CAP,
COUPLING NUT: PASSIVATED PER AMS-QQ-P-35, TYPE II

CONTACT: GOLD PER ASTM B488, TYPE II,
GRADE C, CLASS 1.52; OVER NICKEL
PER AMS-QQ-N-290, CLASS 1

PERFORMANCE :

IMPEDANCE: 50 OHMS

FREQ. RANGE: DC TO 18.0 GHz

VSWR: 1.05+.010F X GHz

OPERATING TEMP: -55°C TO +125°C

AVG. POWER: 1 WATT (NOTE 1)

PEAK POWER: 50 WATTS (NOTE 2)

CONNECTOR DURABILITY: 500 CYCLES

ENGAGEMENT/DISENGAGEMENT: 2.0 IN-LBS

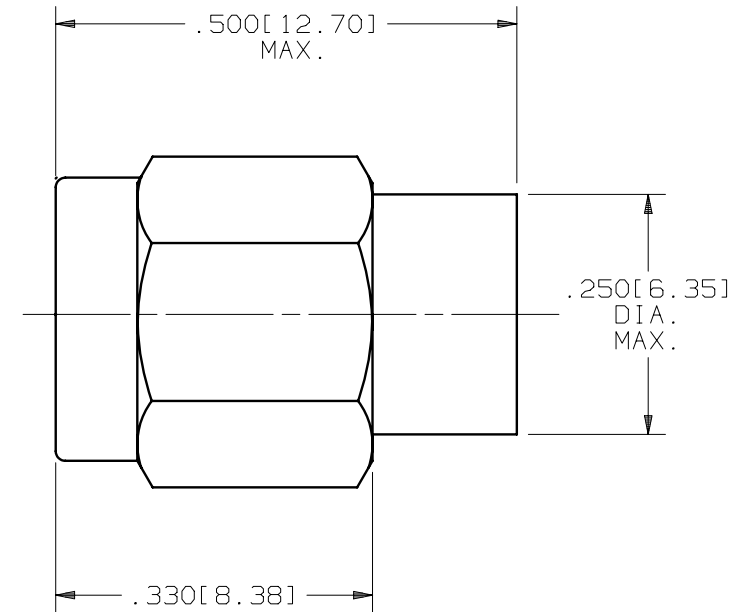
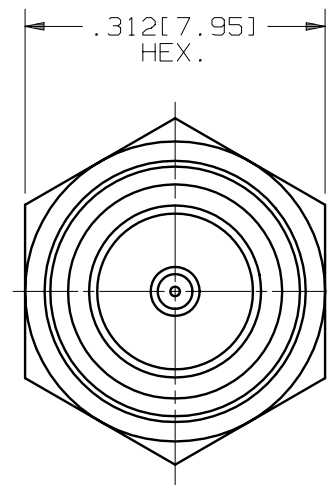
PRODUCT DATA DRAWING

CAD
GENERATED
DRAWING

DCN
CONTROLLED
DOCUMENT

DWG. NO.

SF8018-6005



NOTES:

1. POWER INPUT DERATED LINEARLY FROM 25°C TO .5 WATTS AT 125°C.
2. PEAK POWER FOR A DUTY CYCLE OF 5 X 10⁻⁴ MAXIMUM PULSE DURATION OF 5 MICROSECONDS.

SYM.	DESCRIPTION	DATE	APPR.	UNLESS OTHERWISE SPECIFIED:			DIMENSIONS ARE IN INCHES			TITLE:
-	REL.DCN 30762	12/03	BRT	1)ALL DIMENSIONS ARE AFTER PLATING.	DECIMALS	FRACTIONAL	ANGULAR	SV Microwave, Inc. 2400 Centrepark West Drive, Suite 100 West Palm Beach, FL 33409		
A	REV.DCN 32745	02/05	CCC	2)BREAK CORNERS & EDGES .005 R.MAX.	.X ±.030		X° ±1°0'			
				3)CHAM. 1s1 & LAST THDS.	.XX ±.015	±1/64	X°X' ±15'	DWG. NO. SF8018-6005		
				4)SURFACE ROUGHNESS 63 / MIL-STD-10.	.XXX ±.005					
				5)DIAS. ON COMMON CENTERS TO BE CONCENTRIC WITHIN .005 T.I.R.	MATERIAL: SEE ABOVE			CAGE NO. 95077		
				6)REMOVE ALL BURRS.	FINISH: SEE ABOVE					
					DRAWN: BRT 12/05/03			SIZE B		
					CHECKED:					
					APPROVED: BRT 12/05/03					