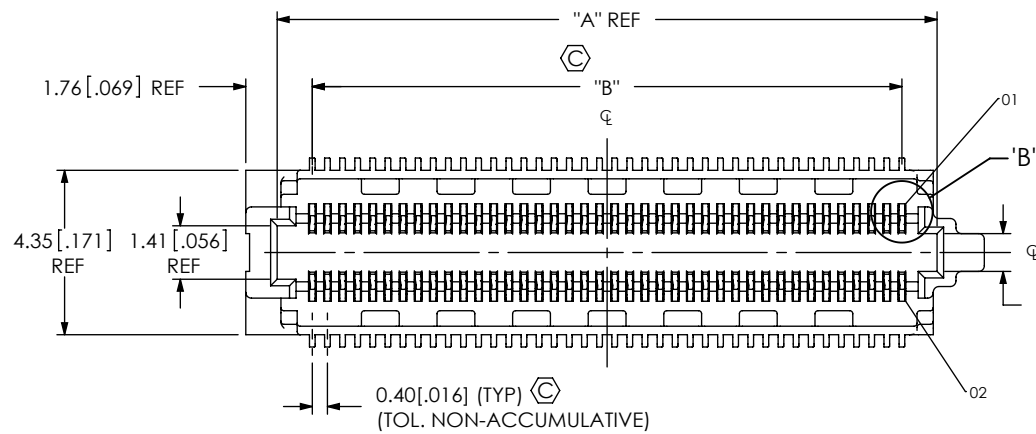


DO NOT SCALE FROM THIS PRINT

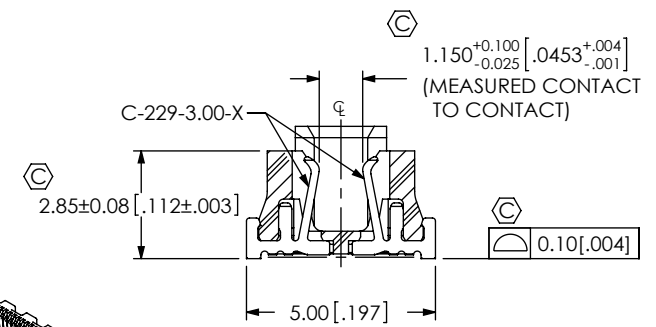
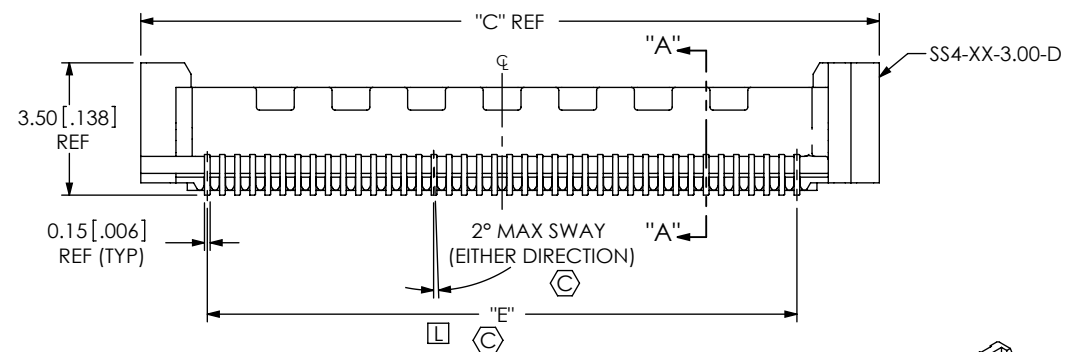
DESIGNED & DIMENSIONED IN MILLIMETERS [INCHES]

SS4-XX-X.XX-X-D-X-XX-TR



- No OF POSITIONS -10, -15, -20, -30, -40, -50 (PER ROW)
- LEAD STYLE -3.00: SEE FIG 1 (USE C-229-3.00-X) -3.50: SEE FIG 2, SHT 2 (USE C-229-3.50-X)
- PLATING -L: 10µ" SELECTIVE GOLD IN CONTACT AREA, MATTE TIN ON TAIL (USE C-229-X.XX-X)
- ROW SPECIFICATION -D: DOUBLE
- PACKAGING -TR: TAPE AND REEL PACKAGING (SEE NOTE 4)
- PLACEMENT PAD -K: KAPTON PAD (USE K-500-300) (SEE FIG 4 & 5, SHT 3) -PA: PICK & PLACE WITH ALIGNMENT PINS (SEE FIG 6, SHT 4) (NOT AVAILABLE IN -15 POS)
- OPTIONS \*-L: LATCHING (USE WT-40-X.XX-T) (SEE FIG 3, SHT 2 AND NOTE 3) (LEAVE BLANK FOR NO OPTION)

\* = TOOLED ONLY FOR THE -3.00 LEAD STYLE



SECTION "A"- "A" SCALE 5:1

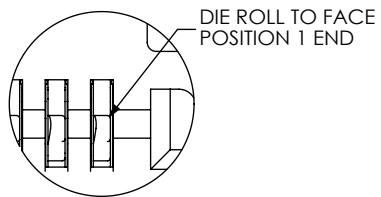


TABLE 1

POS	"A"	"B"	"C"	"E"
-10	5.46 [.215]	3.60 [.142]	7.54 [.297]	3.60 [.142]
-15	7.46 [.294]	5.60 [.220]	9.54 [.376]	5.60 [.220]
-20	9.46 [.372]	7.60 [.299]	11.54 [.454]	7.60 [.299]
-30	13.46 [.530]	11.60 [.457]	15.54 [.612]	11.60 [.457]
-40	17.46 [.687]	15.60 [.614]	19.54 [.769]	15.60 [.614]
-50	21.46 [.844]	19.60 [.772]	23.54 [.927]	19.60 [.772]

FIG 1 SS4-40-3.00-L-D SHOWN

TABLE 2 REF

SS4 LEAD STYLE	STACK HEIGHT		
	ST4 LEAD STYLE		
-1.00	-1.00	-1.50	-2.50
-3.00	4.0 [.16]	4.5 [.18]	5.5 [.22]
-3.50	4.5 [.18]	5.0 [.20]	6.0 [.24]

- NOTES:
- ⊗ REPRESENTS A CRITICAL DIMENSION.
  - MINIMUM PUSHOUT FORCE: 2.22N [.5 LB].
  - L: LATCHING OPTION NOT INTENDED FOR ALIGNMENT TO PCB. AUTOMATED PLACEMENT IS RECOMMENDED.
  - FOR QUANTITIES UP TO 49 PIECES, NO LEADER, TRAILER, OR REEL WILL BE SUPPLIED. FOR QUANTITIES OF 50-124 PIECES, NO LEADER OR TRAILER WILL BE SUPPLIED.

UNLESS OTHERWISE SPECIFIED, DIMENSIONS ARE IN MILLIMETERS. TOLERANCES ARE:  
 DECIMALS ANGLES  
 .X: ±0.3 [.01] 2°  
 .XX: ±0.13 [.005]  
 .XXX: ±0.051 [.0020]

PROPRIETARY NOTE  
 THIS DOCUMENT CONTAINS INFORMATION CONFIDENTIAL AND PROPRIETARY TO SAMTEC, INC. AND SHALL NOT BE REPRODUCED OR TRANSFERRED TO OTHER DOCUMENTS OR DISCLOSED TO OTHERS OR USED FOR ANY PURPOSE OTHER THAN THAT WHICH IT WAS OBTAINED WITHOUT THE EXPRESSED WRITTEN CONSENT OF SAMTEC, INC.

MATERIAL: DO NOT SCALE DRAWING SHEET SCALE: 2:1  
 INSULATOR: LCP, UL 94 V0, COLOR: BLACK  
 CONTACT: PHOS BRONZE  
 LATCH: PHOS BRONZE

**samtec**

520 PARK EAST BLVD, NEW ALBANY, IN 47150  
 PHONE: 812-944-6733 FAX: 812-948-5047  
 e-Mail: info@SAMTEC.com code: 55322

DESCRIPTION:  
 0.4mm [.016] SOCKET STRIP ASSEMBLY

DWG. NO.  
 SS4-XX-X.XX-X-D-X-XX-TR

BY: CLAY W 4/19/2007 SHEET 1 OF 4

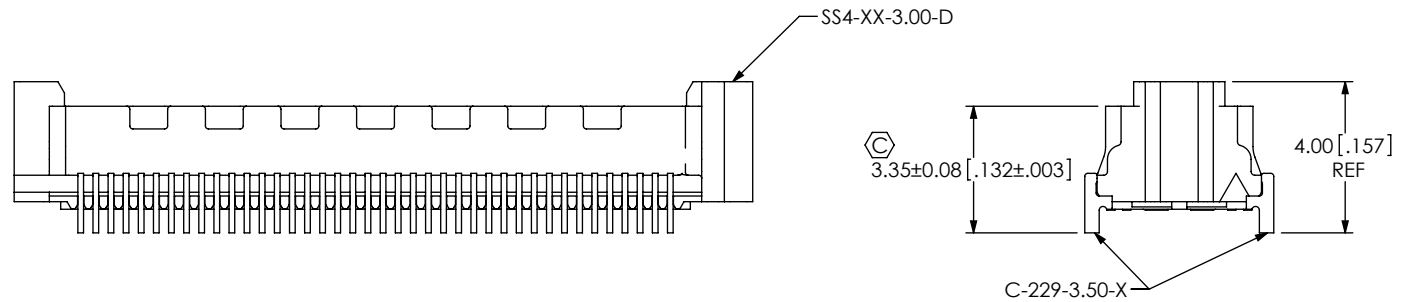


FIG 2  
-3.50 BODY HEIGHT  
SS4-40-3.50-X-D SHOWN  
(DIFFERENT AS SHOWN, OTHERWISE SAME AS FIG 1)

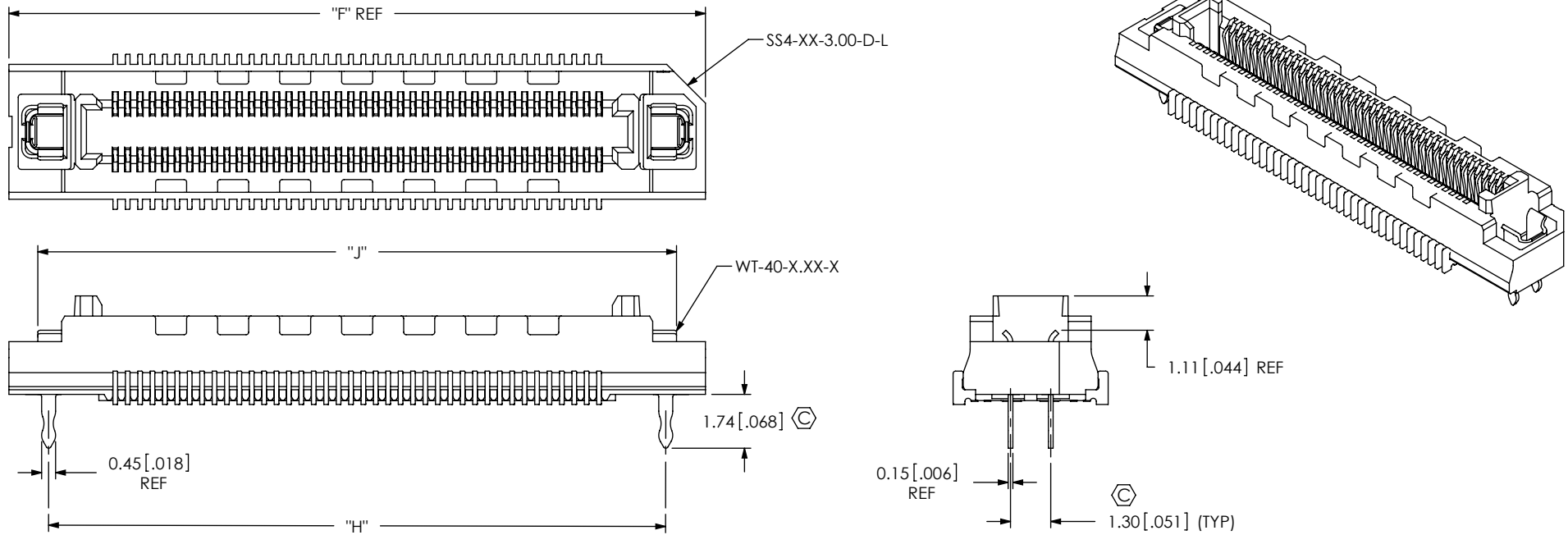


FIG 3  
\*-L: LATCHING OPTION  
SS4-40-3.00-X-D-L SHOWN  
(DIFFERENT AS SHOWN, OTHERWISE SAME AS FIG 1)  
\* = TOOLED ONLY FOR THE -3.00 LEAD STYLE

No. OF POS	"F"	"H"	"J"
-10	10.46 [.412]	7.90 [.311]	8.60 [.339]
-15	12.46 [.491]	9.90 [.390]	10.60 [.417]
-20	14.46 [.569]	11.90 [.469]	12.60 [.496]
-30	18.46 [.727]	15.90 [.626]	16.60 [.654]
-40	22.46 [.884]	19.90 [.783]	20.60 [.811]
-50	26.46 [1.042]	23.90 [.941]	24.60 [.969]

LEAD STYLE	LATCH
-3.00	W-40-3.00-T
-3.50	*WT-40-3.50-T

(\* = NOT TOOLED)

**PROPRIETARY NOTE**  
THIS DOCUMENT CONTAINS INFORMATION CONFIDENTIAL AND PROPRIETARY TO SAMTEC, INC. AND SHALL NOT BE REPRODUCED OR TRANSFERRED TO OTHER DOCUMENTS OR DISCLOSED TO OTHERS OR USED FOR ANY PURPOSE OTHER THAN THAT WHICH IT WAS OBTAINED WITHOUT THE EXPRESSED WRITTEN CONSENT OF SAMTEC, INC.

DO NOT SCALE DRAWING

SHEET SCALE: 5:1

**samtec**

520 PARK EAST BLVD, NEW ALBANY, IN 47150  
PHONE: 812-944-6733 FAX: 812-948-5047  
e-Mail: info@SAMTEC.com code: 55322

DESCRIPTION:  
0.4mm[.016] SOCKET STRIP ASSEMBLY

DWG. NO.  
**SS4-XX-X.XX-X-D-X-XX-TR**

BY: CLAY W 4/19/2007 SHEET 2 OF 4

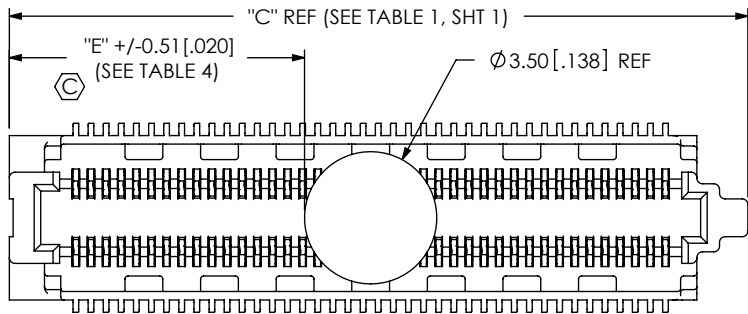
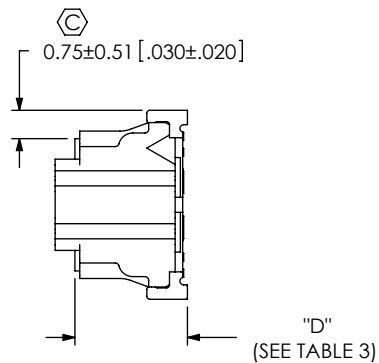


FIG 4  
 -K: KAPTON OPTION  
 SS4-40-3.00-X-D-K SHOWN  
 (USE K-500-300)  
 (DIFFERENT AS SHOWN, OTHERWISE SAME AS FIG 1)



LEAD STYLE	"D"
-3.00	2.98 [.117]
-3.50	3.48 [.137]

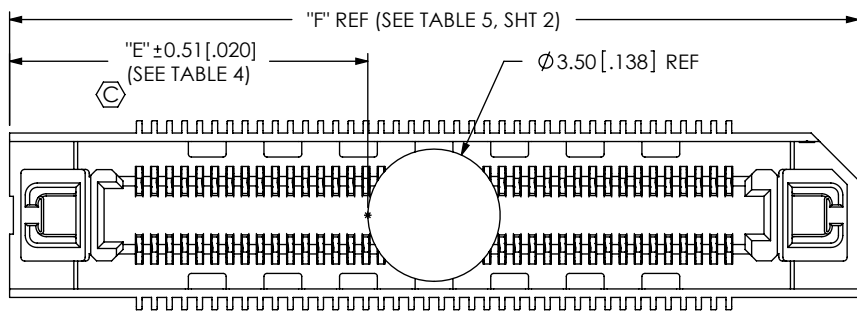
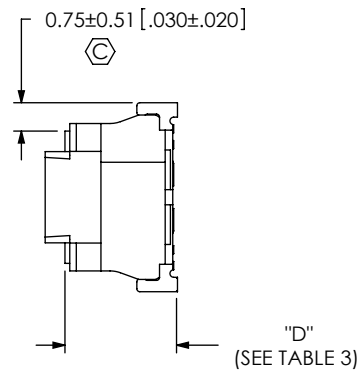


FIG 5  
 -K: KAPTON OPTION(W/ -L OPTION)  
 SS4-40-3.00-X-D-L-K SHOWN  
 (USE K-500-300)  
 (DIFFERENT AS SHOWN, OTHERWISE SAME AS FIG 1)



POS	"E" NO -L OPTION	"E" W/ -L OPTION
-10	1.48 [.058]	3.48 [.137]
-15	2.48 [.098]	4.48 [.176]
-20	3.48 [.137]	5.48 [.216]
-30	5.48 [.216]	7.48 [.294]
-40	7.48 [.294]	9.48 [.373]
-50	9.48 [.373]	11.48 [.452]

PROPRIETARY NOTE

THIS DOCUMENT CONTAINS INFORMATION CONFIDENTIAL AND PROPRIETARY TO SAMTEC, INC. AND SHALL NOT BE REPRODUCED OR TRANSFERRED TO OTHER DOCUMENTS OR DISCLOSED TO OTHERS OR USED FOR ANY PURPOSE OTHER THAN THAT WHICH IT WAS OBTAINED WITHOUT THE EXPRESSED WRITTEN CONSENT OF SAMTEC, INC.

DO NOT SCALE DRAWING

SHEET SCALE: 5:1

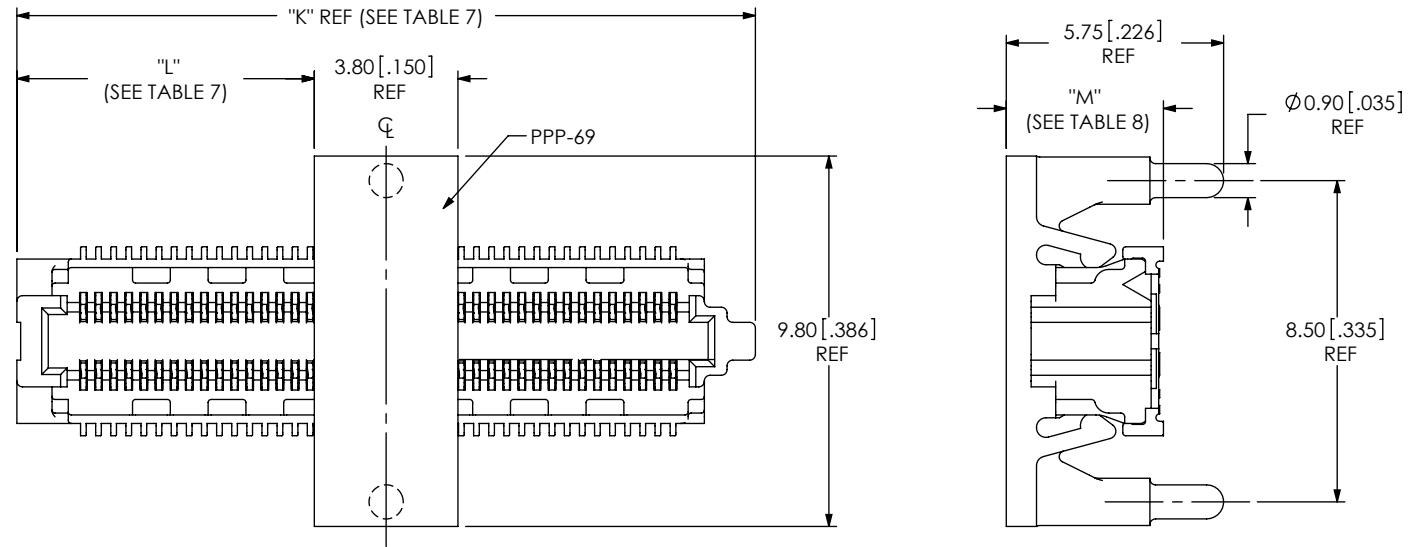
**samtec**

520 PARK EAST BLVD, NEW ALBANY, IN 47150  
 PHONE: 812-944-6733 FAX: 812-948-5047  
 e-Mail: info@SAMTEC.com code: 55322

DESCRIPTION:  
 0.4mm[.016] SOCKET STRIP ASSEMBLY

DWG. NO.  
 SS4-XX-X.XX-X-D-X-XX-TR

BY: CLAY W 4/19/2007 SHEET 3 OF 4



**FIG 6**  
 -PA: PICK & PLACE PAD WITH  
 ALIGNMENT PINS  
 SS4-40-3.00-X-D-PA SHOWN  
 (DIFFERENT AS SHOWN, OTHERWISE SAME AS FIG 1)  
 (NOT AVAILABLE IN -15 POS)

LEAD STYLE	"M"
-3.00	4.16 [.164]
-3.50	4.66 [.183]

POS	"K" W/O -L OPTION	"K" W/-L OPTION	"L" W/O -L OPTION	"L" W/-L OPTION
-10	7.54 [.297]	10.46 [.412]	1.87 [.074]	3.33 [.131]
-20	11.54 [.454]	14.46 [.569]	3.87 [.152]	5.33 [.210]
-30	15.54 [.612]	18.46 [.727]	5.87 [.231]	7.33 [.289]
-40	19.54 [.769]	22.46 [.884]	7.87 [.310]	9.33 [.367]
-50	23.54 [.927]	26.46 [1.042]	9.87 [.389]	11.33 [.446]

**PROPRIETARY NOTE**  
 THIS DOCUMENT CONTAINS INFORMATION  
 CONFIDENTIAL AND PROPRIETARY TO  
 SAMTEC, INC. AND SHALL NOT BE REPRODUCED  
 OR TRANSFERRED TO OTHER DOCUMENTS OR  
 DISCLOSED TO OTHERS OR USED FOR ANY  
 PURPOSE OTHER THAN THAT WHICH IT WAS  
 OBTAINED WITHOUT THE EXPRESSED WRITTEN  
 CONSENT OF SAMTEC, INC.

DO NOT SCALE DRAWING

SHEET SCALE: 5:1



520 PARK EAST BLVD, NEW ALBANY, IN 47150  
 PHONE: 812-944-6733 FAX: 812-948-5047  
 e-Mail: info@SAMTEC.com code: 55322

DESCRIPTION:  
 0.4mm[.016] SOCKET STRIP ASSEMBLY

DWG. NO.  
**SS4-XX-X.XX-X-D-X-XX-TR**

BY: CLAY W 4/19/2007 SHEET 4 OF 4