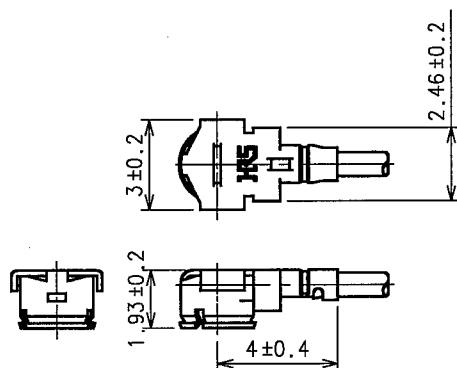


COUNT	DESCRIPTION OF REVISIONS	BY	CHKD	DATE	COUNT	DESCRIPTION OF REVISIONS	BY	CHKD	DATE
△					△				
△					△				
APPLICABLE STANDARD									
RATING	OPERATING TEMPERATURE RANGE	-40°C TO +90°C(90%RH MAX)			STORAGE TEMPERATURE RANGE	-40°C TO +90°C(90%RH MAX)			
	POWER	— W			CHARACTERISTIC IMPEDANCE	50 Ω ( 0 TO 6 GHz)			
	PECULIARITY	—			APPLICABLE CABLE	RF-MF5010(WHITE) :NISSEI ELECTRIC CO.,LTD.			
SPECIFICATIONS									
ITEM		TEST METHOD				REQUIREMENTS		QT	AT
CONSTRUCTION									
GENERAL EXAMINATION		VISUALLY AND BY MEASURING INSTRUMENT.				ACCORDING TO DRAWING.		○	○
MARKING		CONFIRMED VISUALLY.						○	○
ELECTRIC CHARACTERISTICS									
CONTACT RESISTANCE		10 mA MAX (DC OR 1000 Hz).				CENTER CONTACT	255 mΩ MAX.	○	○
						OUTER CONTACT	66 mΩ MAX.	○	○
INSULATION RESISTANCE		100 V DC.				500 MΩ MIN.		○	○
VOLTAGE PROOF		200 V AC FOR 1 min.CURRENT LEAKAGE 2mA MAX.				NO FLASHOVER OR BREAKDOWN.		○	○
VOLTAGE STANDING		FREQUENCY 0.045 TO 3 GHz.				VSWR	1.3 MAX.	○	—
WAVE RATIO		FREQUENCY 3 TO 6 GHz.				VSWR	1.35 MAX.		
INSERTION LOSS		FREQUENCY — TO — GHz				— dB MAX.		—	—
MECHANICAL CHARACTERISTICS									
CABLE CLAMP ROBUSTNESS (AGAINST CABLE PULL)		APPLYING A PULL FORCE THE CABLE AXIALLY AT 7 N MAX.				① NO WITHDRAWAL AND BREAKAGE OF CABLE. ② NO BREAKAGE OF CLAMP.		○	—
REMARKS					DRAWN	DESIGNED	CHECKED	APPROVED	RELEASED
					Y. Yasumuro	Y. Yasumuro	M. Yamane	J. Mitani	
					04.07.23	04.07.23	04.07.23	04.07.23	
Unless otherwise specified, refer to JIS C 5402.									
Note QT:Qualification Test AT:Assurance Test O:Applicable Test									
HRS HIROSE ELECTRIC CO., LTD.					SPECIFICATION SHEET		PART NO. U.FL-2LP-04N1-A-(150)		
CODE NO.(OLD) CL			DRAWING NO. ELC4-305650-12			PART NO. CL321-3372-7-12			1/1

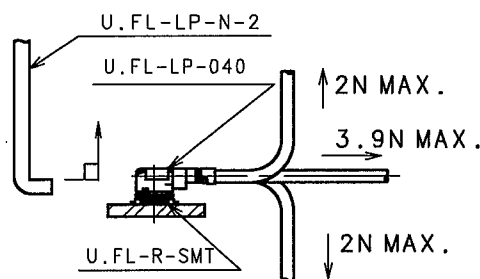
1					2					3					4				
COUNT	DESCRIPTION OF REVISIONS				BY	CHKD	DATE			COUNT	DESCRIPTION OF REVISIONS				BY	CHKD	DATE		
△							.			△							.		
△							.			△							.		
△							.			△							.		

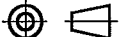

# 【DIMENSIONS OF CONNECTOR】

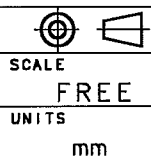


## 【PRECAUTIONS FOR HANDLING】

- ◆Connector insertion and extraction
  - a. Connector shall be extracted vertically by specialised extraction JIG. Part No.: U.FL-LP-N-2 (CL Code: CL331-0494-5) Never hold the cable when extracting the cable because it damages the connector.
  - b. Insert the connector as perpendicularly to the mating surface as possible by aligning the mating axes of both connectors. Do not excessively slant the connectors when inserting.
- ◆Allowable loads on the cable after the connectors are mated. The figures below show the maximum allowable loads on the cable. Do not apply loads exceeding these values to the cable.



1	U.FL-LP-040	CL331-0451-2	2	RF-MF5010(WHITE)	NISSEI ELECTRIC CO.,LTD.			
NO.	PART NO.	CODE NO.	NO.	PART NO.	MANUFACTURER			
CODE NO.(OLD)			DRAWN	DESIGNED	CHECKED	APPROVED	RELEASED	
			Y. Yasumuro '04.07.23	Y. Yasumuro '04.07.23	M. Yamane '04.07.23	J.Mitani '04.07.23		
		DRAWING NO.		PART NO.				
SCALE		EDC4-305650-12		U.FL-2LP-04N1-A-(150)				
FREE								
UNITS		CODE NO.						
mm		CL321-3372-7-12						
		HIROSE ELECTRIC CO.,LTD.						
				1/1				



HIROSE ELECTRIC CO., LTD.