

NOTES:

1. ELECTRICAL CHARACTERISTICS:

1.1 CONTACT CURRENT RATING:A current of 5.0 A shall be applied collectively to VBUS pins (i.e., pins A4, A9, B4, and B9) and 1.25 A applied to the VCONN pin (i.e., B5 of the plug connector) with the return path through the corresponding GND pins (i.e., pins A1, A12, B1, and B12). A minimum current of 0.25 A shall also be applied individually to all the other contacts.

1.2 DIELECTRIC WITHSTANDING VOLTAGE:AC 100V R.M.S.

1.3 INSULATION RESISTANCE:100 MEGAOHMS MIN.

1.4 CONTACT RESISTANCE:40 MILLIOHMS MAX.

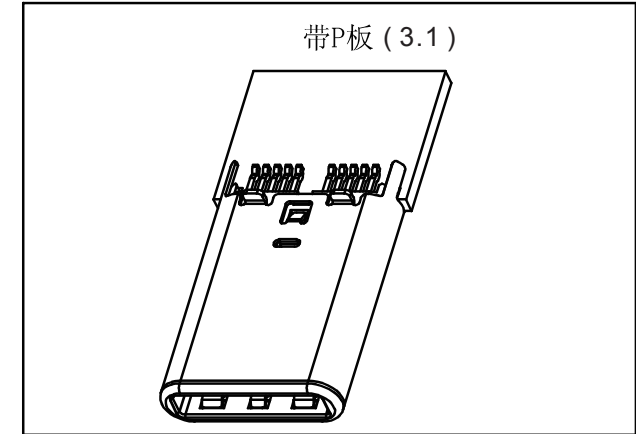
2. MECHANICAL CHARATERISTICS:

2.1 INSERTION FORCE:5N~20N;

WITHDRAWAL:8N~20N up to 1,000 mating cycles;after mating 6 N to 20 N.

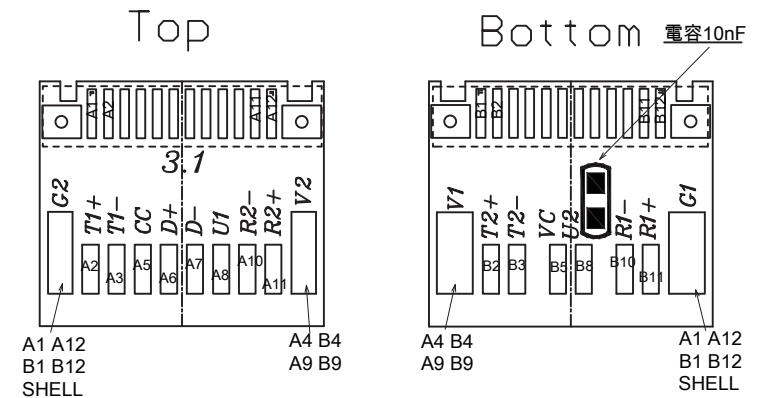
2.2 DURABILITY CYCLE:10000 CYCLES, AND 200 CYCLES PER HOUR.

3. OPERATION TEMPERATURE:-40 DEG C TO +80 DEG C.



BOM:

3	铁壳上盖	SPCC, T=0.30±0.02mm	镀镍	1	
2	铁壳下盖	SPCC, T=0.30±0.02mm	镀镍	1	
1	单件式	PCB板	环氧树脂 绿色		1
		接地片	SUS301, T=0.10±0.01mm		2
		外壳	SUS304, T=0.15±0.01mm	镀镍/镀金	1
		中卡钩	SUS301, T=0.30±0.01mm	镀镍	1
		端子座-B	LCP E130i UL 94V-0	黑色	1
		端子座-A	LCP E130i UL 94V-0	黑色	1
		前胶心	LCP E130i UL 94V-0	黑色	1
		12PIN端子	磷青铜, T=0.25±0.01mm	镀前金后锡	12
10PIN端子	磷青铜, T=0.25±0.01mm	镀前金后锡	10	电镀依客户需求	
項次	名稱	材質	表面	數量	備註



RoHS Compliant

TOLERANCES ARE

DRAWING BY CY

X, ±

CHECKED BY GENIUS

.X ± 0.30

UNIT / mm SCALE 1 : 1

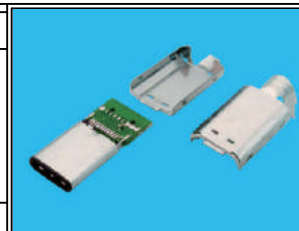
.XX ± 0.20

DATE

.XXX ± 0.10

SIZE A4 PPROJECTION

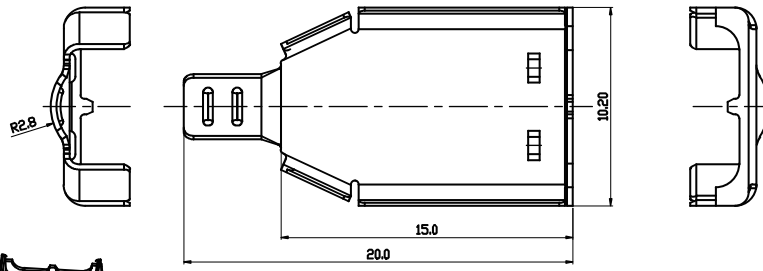
ANG ± 3°



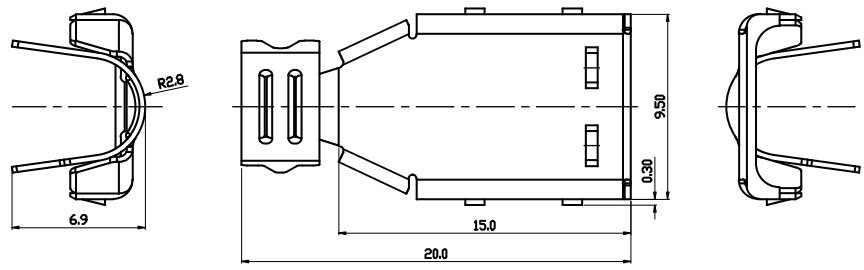
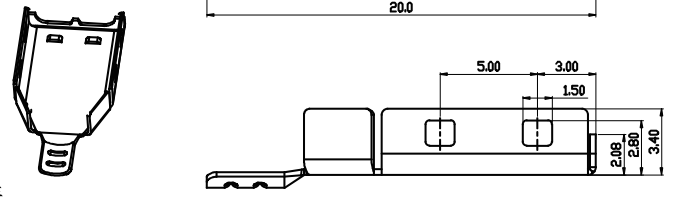
ORDER INFORMATION

USB-PS-24C-LF
 SERIES | LEADFREE
 C TYPE
 24 WAY
 SOLDER
 MALE

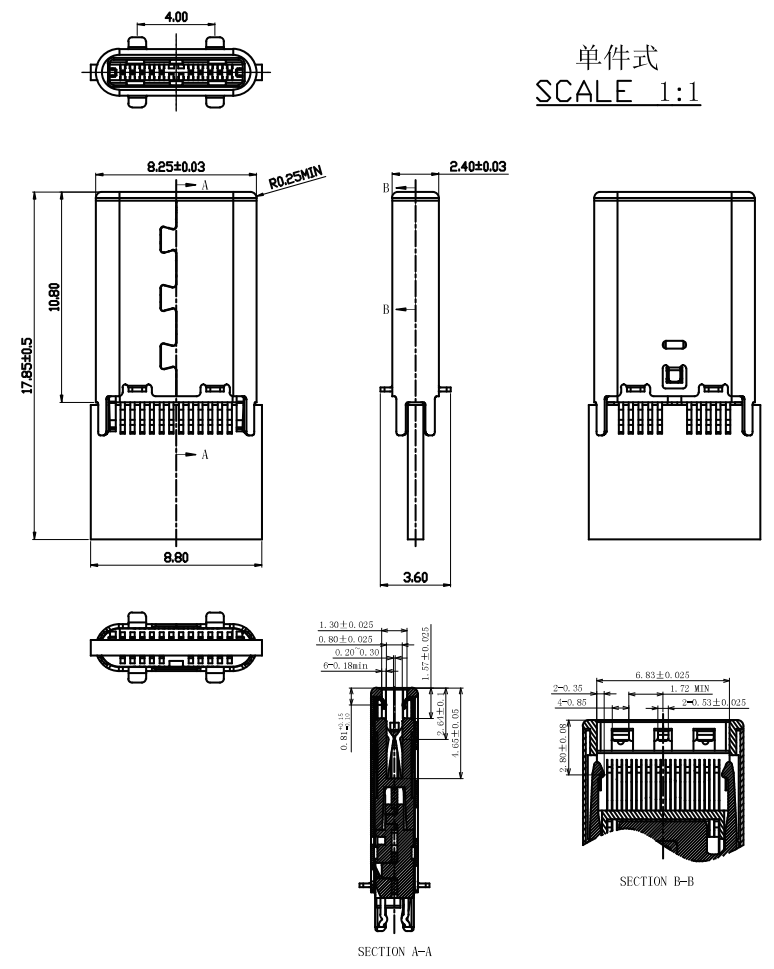
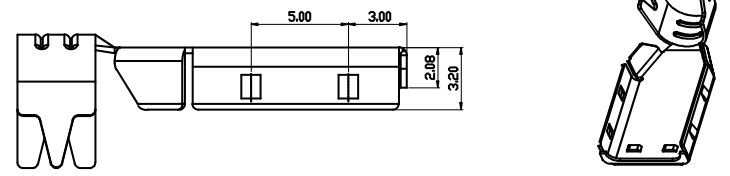
DESCRIPTION: C TYPE 公座 三件式 3.1



铁壳上盖
SCALE 1:1



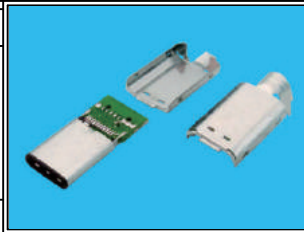
铁壳下盖
SCALE 1:1



RoHS Compliant

TOLERANCES ARE

DRAWING BY CY		X, ±
CHECKED BY GENIUS		.X ± 0.30
UNIT / mm	SCALE 1:1	.XX ± 0.20
DATE		.XXX ± 0.10
SIZE A4	PJECTION	ANG ± 3°



ORDER INFORMATION

USB-PS-24C-LF
 SERIES | LEADFREE
 C TYPE
 24 WAY
 SOLDER
 MALE

DESCRIPTION: C TYPE 公座 三件式 3.1