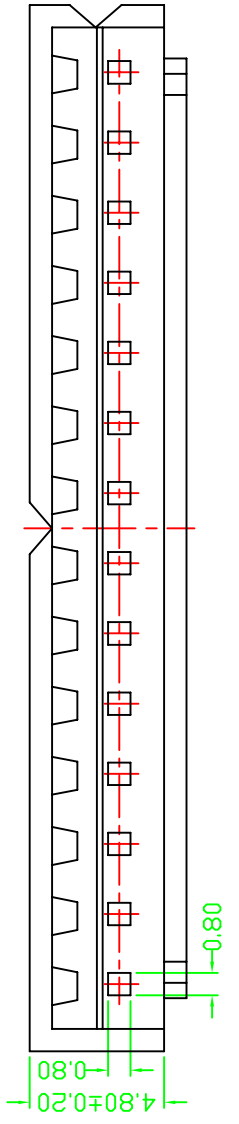
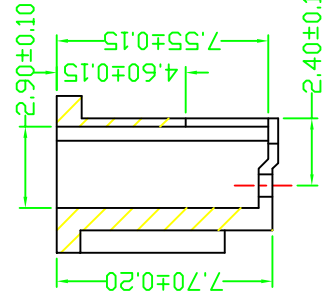
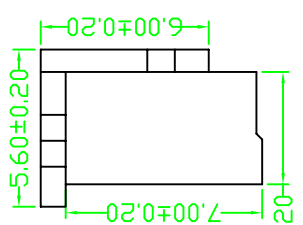
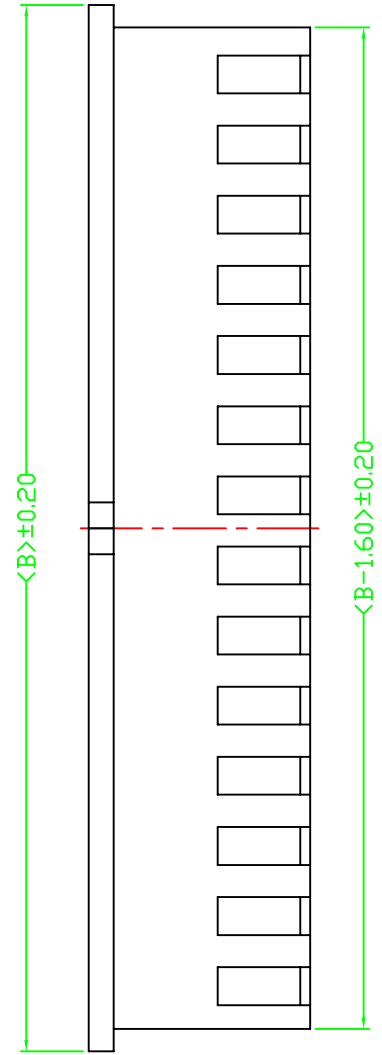
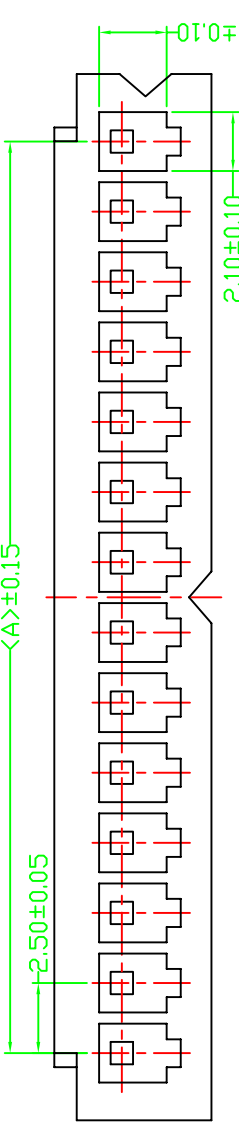


14	工具 TOOL
13	重点尺寸 Major Dimension
	序号 SUITE
	卡尺
	投影仪
	投影仪
	投影仪
	投影仪
	卡尺
	投影仪
	投影仪
	卡尺
	卡尺

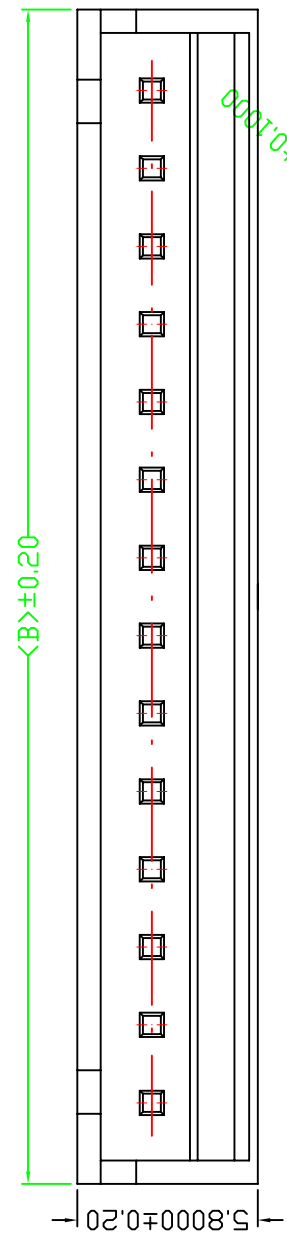
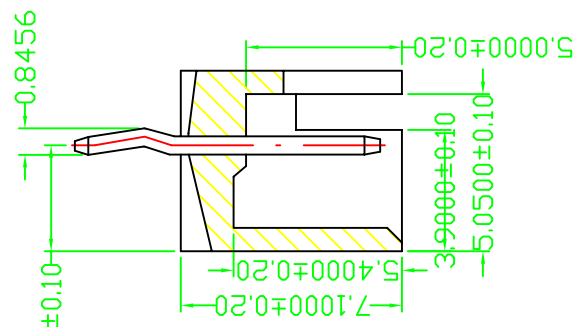
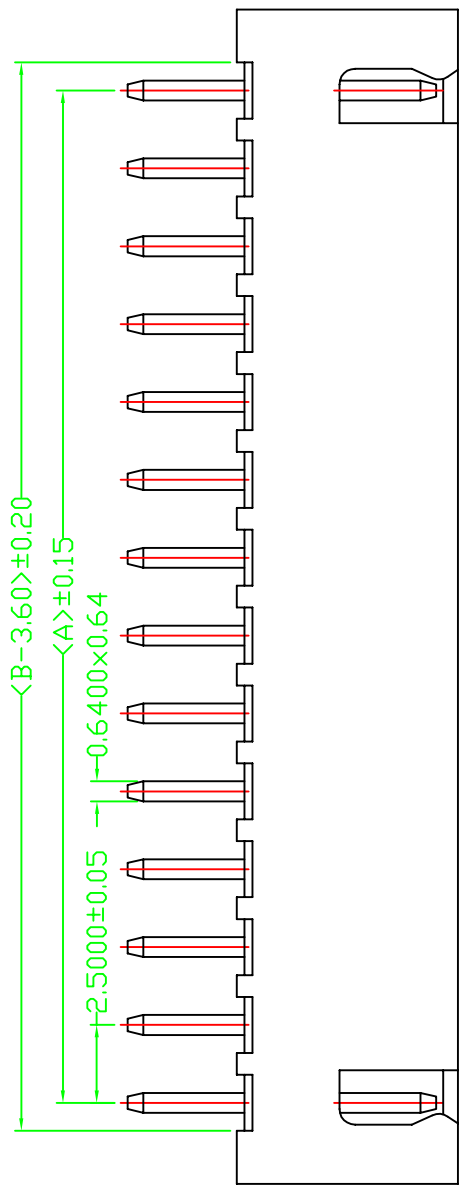
PART NO	Dimensions	
	A	B
ZL2503-Y-2P	2.50	7.3
ZL2503-Y-3P	5.00	9.80
ZL2503-Y-4P	7.50	12.3
ZL2503-Y-5P	10.00	14.8
ZL2503-Y-6P	12.5	17.3
ZL2503-Y-7P	15.00	19.8
ZL2503-Y-8P	17.5	22.3
ZL2503-Y-9P	20.0	24.8
ZL2503-Y-10P	22.5	27.3
ZL2503-Y-11P	25.0	29.8
ZL2503-Y-12P	27.5	32.3
ZL2503-Y-13P	30.0	34.8
ZL2503-Y-14P	32.5	37.3
ZL2503-Y-15P	35.0	39.8
ZL2503-Y-16P	37.5	42.3
ZL2503-Y-17P	40.0	44.8
ZL2503-Y-18P	42.5	47.3
ZL2503-Y-19P	45.0	49.8
ZL2503-Y-20P	47.5	52.3



说明:
 1. 产品料号: ZL2503-Y
 2. 产品材质: PA66UL94V-0
 3. PIN 针保持力: $\geq 1500g(\min)$ /PIN
 4. 对配连接器料号: ZL2503-A&A&W1&AWD
 5. 组装用端子料号: ZL2503-T

修改	颜色	白色	尺寸	A4
记	COLOR	白色	SIZE	A4
事	比例	1 : 1	SCALE	1 : 1
	UNIT	mm	UNIT	mm
	MATERIAL	PA66	MATERIAL	PA66
	DRAWN	康靖	DRAWN	康靖
	CHECKED		CHECKED	
	APPROVED		APPROVED	
	SHEET	1/1	SHEET	1/1
PA	FILE NO.	ZL2503-Y	FILE NO.	ZL2503-Y
06/09/27	TITLE	XH2.5孔座	TITLE	XH2.5孔座
初版发行	PART NO.	ZL2503-Y	PART NO.	ZL2503-Y
	MOLD NO.	XXXX	MOLD NO.	XXXX
	Angle		Angle	
	DIM		DIM	
	TOL		TOL	
	APPROVED		APPROVED	
	DRAWN		DRAWN	
	变更内容		变更内容	
	修改		修改	
	日期		日期	
	日期		日期	
	日期		日期	

14	工具 TOOL	重点尺寸 Major Dimension	序号 SUITE
J	卡尺		△
	投影机		△
	投影机		△
	投影机		△
I	卡尺		△
	投影机		△
	投影机		△
H	卡尺		△
	卡尺		△



说明:

1. 产品料号: ZL2503-A
2. 产品材质: PA66UL 94V-0
3. PIN 针保持力: 1500g(min)/PIN
4. 对配连接器料号: ZL2503-Y
5. 组装用PIN料号: ZL2503-T01

PART NO	Dimensions	
	A	B
ZL2503-A-2P	2.50	7.5
ZL2503-A-3P	5.00	10.0
ZL2503-A-4P	7.50	12.5
ZL2503-A-5P	10.0	15.0
ZL2503-A-6P	12.5	17.5
ZL2503-A-7P	15.0	20.0
ZL2503-A-8P	17.5	22.5
ZL2503-A-9P	20.0	25.0
ZL2503-A-10P	22.5	27.5
ZL2503-A-11P	25.0	30.0
ZL2503-A-12P	27.5	32.5
ZL2503-A-13P	30.0	35.0
ZL2503-A-14P	32.5	37.5
ZL2503-A-15P	35.0	40.0
ZL2503-A-16P	37.5	42.5
ZL2503-A-17P	40.0	45.0
ZL2503-A-18P	42.5	47.5
ZL2503-A-19P	45.0	50.0
ZL2503-A-20P	47.5	52.5

修改	颜色	白色	SIZE	A4
记事	COLOR		SCALE	1:1
	UNIT	mm		
	MATERIAL	PA66		
	DRAWN	康靖		
	CHECKED			
	APPROVED			
	SHEET	1/1		
	FILE NO.	ZL2503-A		
	TITLE	XH2.5针座		
	PART NO.	ZL2503-A		
	MOLD NO.	XXXX		
	~ 3	+0.06		
	3 ~ 10	+0.10		
	10 ~ 20	+0.15		
	20 ~ 30	+0.20		
	30 ~	+0.30		
	Angle	± 1°		
	DIM			
	APPROVED	核准		
	DRAWN	变更		
	DATE	06/09/27		
	初版发行			
	变更内容			
	MODIFICATION			

