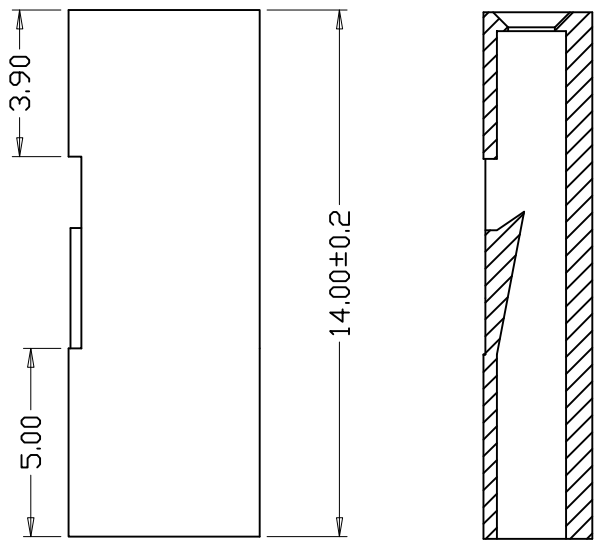
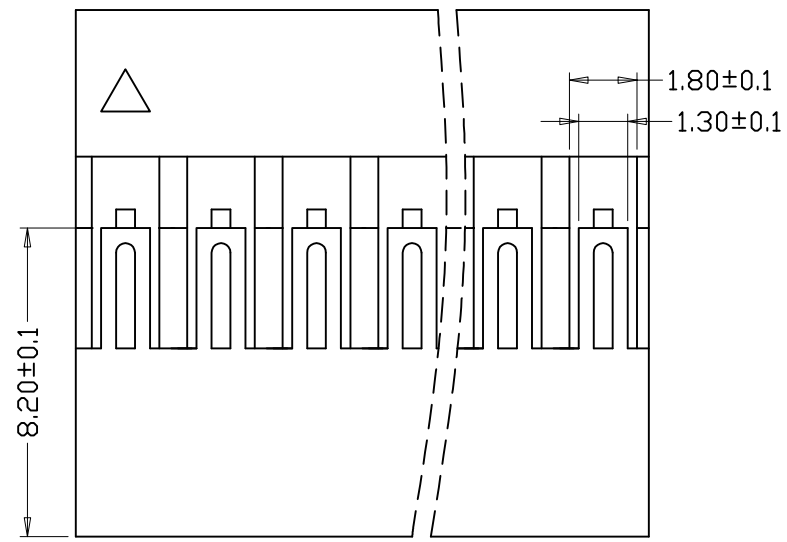


**SPECIFICATIONS:**  
 Voltage rating: 250V AC, DC  
 Current rating: 3A AC, DC  
 Withstanding Voltage: 1000V AC/minute  
 Insulation resistance: 1000MΩ/min  
 Temperature range: -25 C +85 C  
 Contact resistance: Initial value/10mΩ max  
 After environmental testing/20mΩ max



| Part NO. | DimenBion |
|----------|-----------|
|          | A (MM)    |
| 1P       | 2.54      |
| 2P       | 5.08      |
| 3P       | 7.62      |
| 4P       | 10.16     |
| 5P       | 12.7      |
| 6P       | 15.24     |
| 7P       | 17.78     |
| 8P       | 20.32     |
| 9P       | 22.86     |
| 10P      | 25.4      |
| 11P      | 27.94     |
| 12P      | 30.48     |
| 13P      | 33.02     |
| 14P      | 35.56     |
| 15P      | 38.10     |
| 16P      | 40.64     |
| 17P      | 43.18     |
| 18P      | 45.72     |
| 19P      | 48.26     |
| 20P      | 50.80     |

## ZL2543-1PS

**NOTES:**  
**PART NO.:**  
**Material:** <1>HIGH TEMP. PLASTIC UL 94V-0

|                  |            |                     |                   |            |        |            |                |                           |  |
|------------------|------------|---------------------|-------------------|------------|--------|------------|----------------|---------------------------|--|
|                  |            |                     |                   | 料号PART NO: |        |            |                | 一般公差<br>GENERAL TOLERANCE |  |
|                  |            |                     |                   | 品名 TITLE:  |        |            |                | HOUSING                   |  |
|                  |            |                     |                   | 材料: PPO    | 单位: MM | 包装规格: 1K/包 | 比例: 1:1        | X.X ±0.15                 |  |
|                  |            |                     |                   | 制图: LI     | 审核: LI | 核准: LI     | 日期: 2010/02/22 | X.XX ±0.05                |  |
| 日期版次<br>REVISION | 日期<br>DATE | 变更内容<br>DESCRIPTION | 核 准<br>APPROVALBY |            |        |            |                | ANGLE ±1°                 |  |

