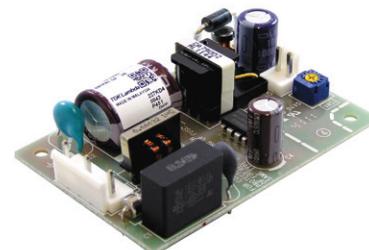




## Single Output 10-30W Power Supplies

Features	Benefits
• 30% smaller than previous generation	• Simplifies equipment design
• Operating temp. -10 to +70°C	• Improved system power optimisation
• No load input power <0.5 W	• Suitable for 'Green' products
• 10 year E-cap lifetime	• Superior reliability



Specification		ZWS10B	ZWS15B	ZWS30B
Model				
ITEMS				
AC Input Voltage range (3)	-	85 - 265VAC (47-63Hz)		
DC Input Voltage range	-	120 - 370VDC		
Input Current (3.3V output) (2)	A	0.18 / 0.11	0.24 / 0.15	0.50 / 0.30
Input Current (5 to 24V output) (2)	A	0.25 / 0.13	0.34 / 0.17	0.65 / 0.35
Inrush Current (2)	A	15 / 30A - Cold Start		
No load power consumption (4)	W	<0.5		
Maximum Ripple and Noise (4)	mV	Tamb ≥0° to ≤70°C : 3.3 & 5V:120mV, 12 to 24V: 150mV Tamb ≥-10° to <0°C : 3.3 & 5V:160mV, 12 to 24V: 180mV		
Temperature Coefficient	-	<0.02%/°C		
Overcurrent protection (1)	-	>105% of maximum output current		
Hold Up time (Typ) at 100VAC	ms	20ms		
Leakage Current (5)	-	0.15 / 0.3mA max.		
Operating Temperature (4)	-	all models are convection : -10 to +50°C=100% load ; +60°C=70% load ; 10W & 30W models : +70°C=20% load ; 15W models : +70°C=40% load		
E-cap lifetime	-	10 year e-cap lifetime (80%load, 24 hours, 50°C)		
Storage Temperature	°C	-30°C to +75°C		
Humidity (non condensing)	-	Operating: 30 - 90%RH, Storage: 10 - 90%RH		
Withstand Voltage	-	I/P to Grnd 2kVAC (10mA), I/P to O/P: 3kVAC (10mA), O/P to Grnd: 500VAC (20mA) for 1mn		
Isolation Resistance	Ω	>100MΩ at 25°C & 70%RH, Output to Grnd: 500VDC		
Vibration (non operating)	-	10 - 55Hz (1 minute sweep), 19.6m/s <sup>2</sup> constant X, Y, Z 1 hour		
Shock	-	<196.1 m/s		
Safety agency Certifications	-	UL60950-1, CSA60950-1, EN60950-1, EN50178 (OV II), CE Mark		
Conducted & Radiated EMI	-	EN55011 / EN55022-B, FCC-B, VCCI-B		
Immunity	-	IEC61000-4-2 (lv 4), -3 (lv 3), -4 (lv 4), -5 (lv 4), -6 (lv 3), -8 (lv 4), -11		
Weight (Typ)	g	45	55	105
Size (W x H x D)	mm	50 x 22 x 73.5	50 x 22 x 87.5	50 x 26 x 105
Warranty	yrs	5		

### Notes:

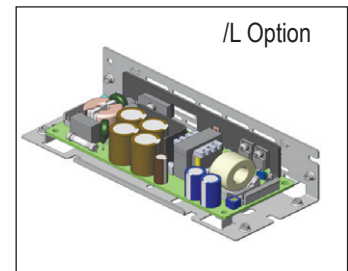
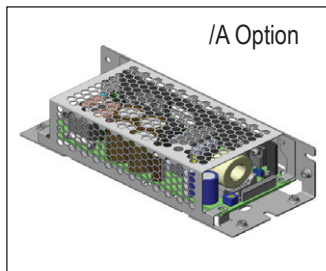
- (1) Avoid prolonged operation in overload
- (2) 100 / 200VAC Input
- (3) 85-90Vac = output current = 80%
- (4) Refer to detailed specifications & Application Notes
- (5) 100/230VAC input

## Model Selector

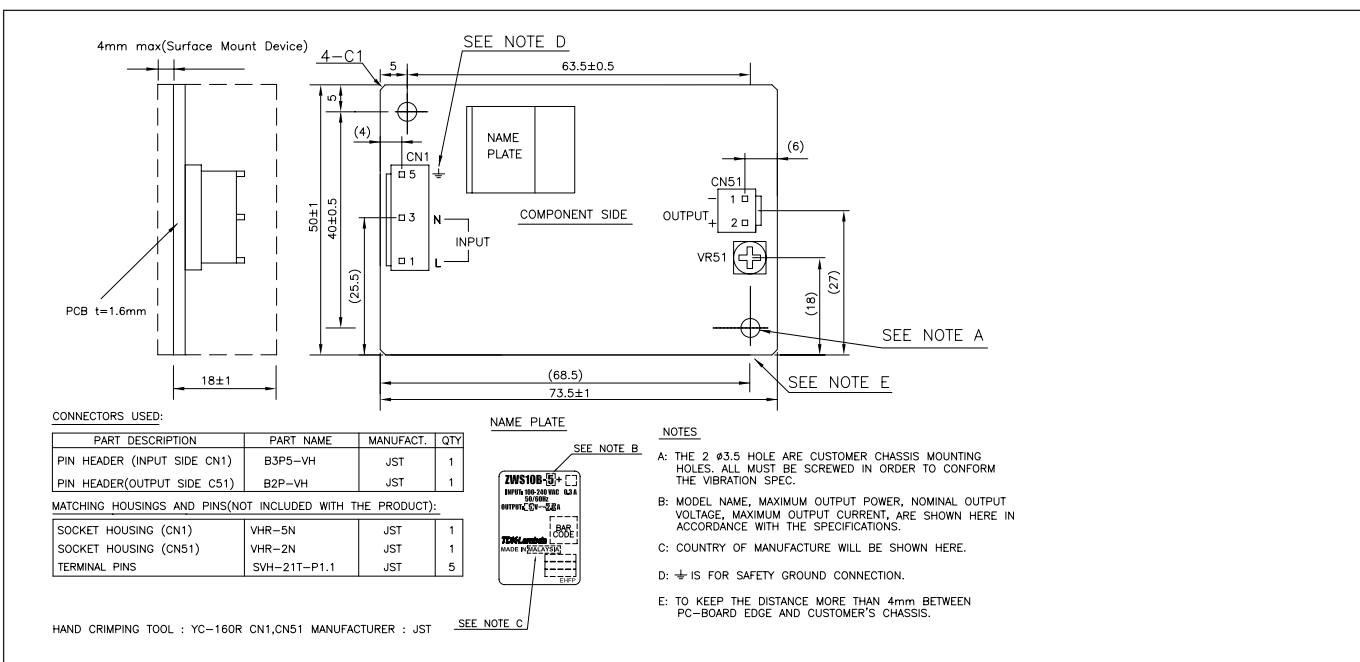
Model	Output Voltage (V)	Output Adjust Range (V)	Max Output Current (A)	Max Output Power (W)	Efficiency at 200VAC Input (%)	Load Reg. (mV)	Line Reg. (mV)	OVP (V)
ZWS10B-3	3.3V	2.97-3.63	2	6.6	70	40	20	4 - 5.25
ZWS10B-5	5V	4.5-5.5	2	10	78	40	20	5.75 - 7
ZWS10B-12	12V	10.8-13.2	0.9	10.8	83	96	48	13.8 - 16.2
ZWS10B-15	15V	13.5-16.5	0.7	10.5	84	120	60	17.3 - 20.3
ZWS10B-24	24V	21.6-26.4	0.5	12	85	150	96	27.6 - 32.4
ZWS15B-3	3.3V	2.97-3.63	3	9.9	71	40	20	4 - 5.25
ZWS15B-5	5V	4.5-5.5	3	15	78	40	20	5.75 - 7
ZWS15B-12	12V	10.8-13.2	1.3	15.6	83	96	48	13.8 - 16.2
ZWS15B-15	15V	13.5-16.5	1	15	84	120	60	17.3 - 20.3
ZWS15B-24	24V	21.6-26.4	0.7	16.8	85	150	96	27.6 - 32.4
ZWS30B-3	3.3V	2.97-3.63	6	19.8	77	40	20	4 - 5.25
ZWS30B-5	5V	4.5-5.5	6	30	82	40	20	5.75 - 7
ZWS30B-12	12V	10.8-13.2	2.5	30	86	96	48	13.8 - 16.2
ZWS30B-15	15V	13.5-16.5	2	30	86	120	60	17.3 - 20.3
ZWS30B-24	24V	21.6-26.4	1.3	31.2	88	150	96	27.6 - 32.4

## Option Description

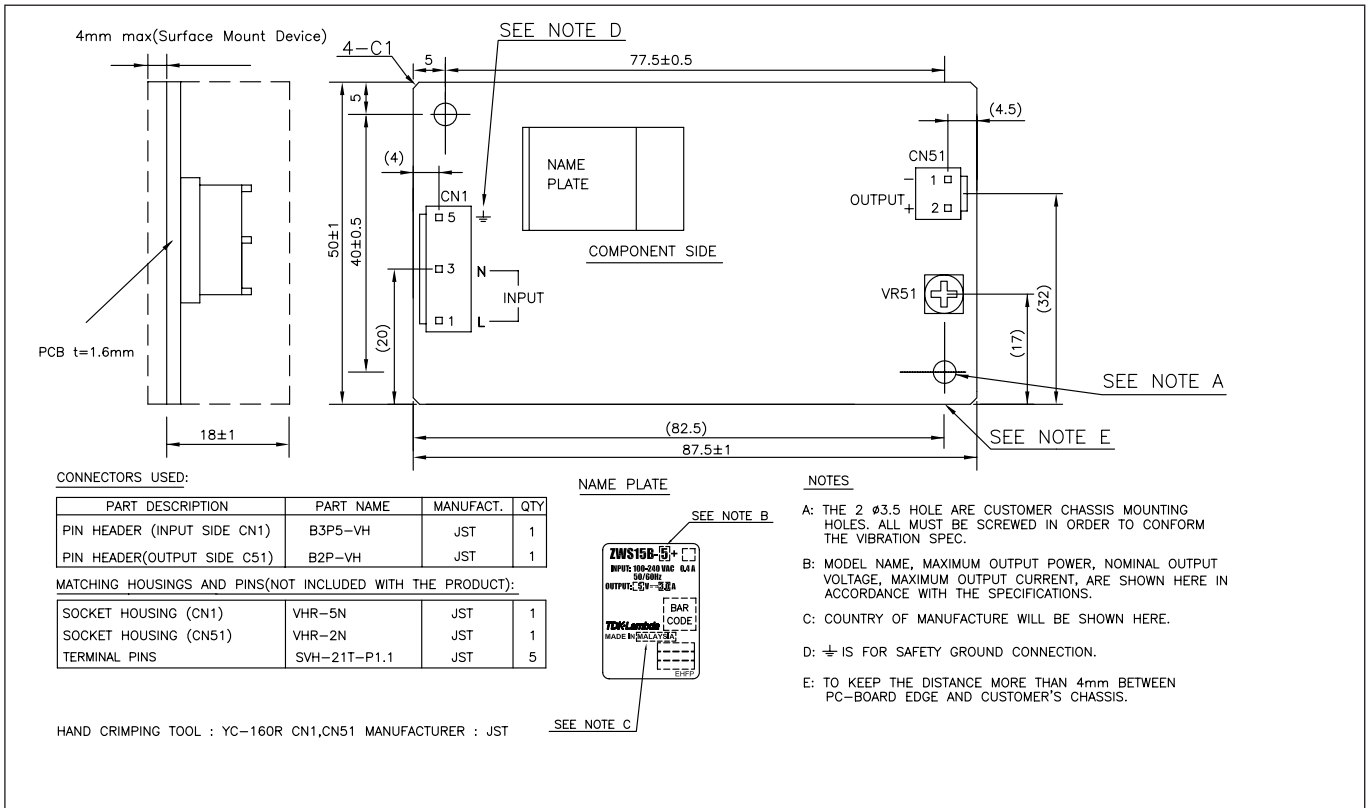
	Suffix
L-Plate and Cover	/A
L-Plate	/L
Conformally coated PCB	/CO2
Remote on/off	/R
Fixed Output Voltage (by resistor)	/FV



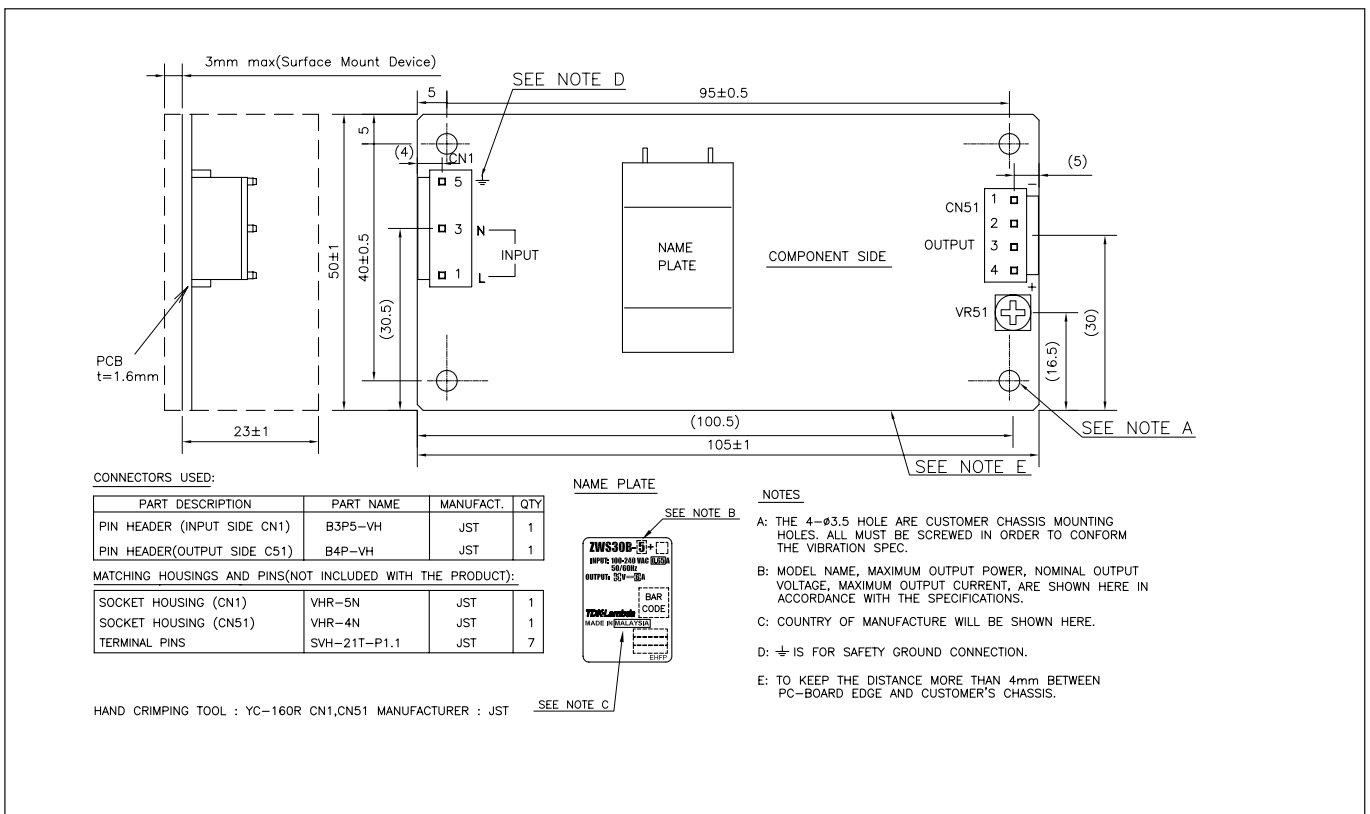
## Outline Drawing ZWS10B



## Outline Drawing ZWS15B



## Outline Drawing ZWS30B





## TDK-Lambda France SAS

ZAC des Delaches  
CS 41077  
9 rue Thuillere  
91978 Villebon Courtaboeuf  
France  
Tel: +33 1 60 12 71 65  
Fax: +33 1 60 12 71 66  
france@fr.tdk-lambda.com  
www.fr.tdk-lambda.com



## Italy Sales Office

Via dei Lavoratori 128/130  
20092 Cinisello Balsamo (MI)  
Italy  
Tel: +39 02 61 29 38 63  
Fax: +39 02 61 29 09 00  
info.italia@it.tdk-lambda.com  
www.it.tdk-lambda.com



## Netherlands

info@tdk-lambda.nl  
www.tdk-lambda.nl



## TDK-Lambda Germany GmbH

Karl-Bold-Strasse 40  
77855 Achern  
Germany  
Tel: +49 7841 666 0  
Fax: +49 7841 5000  
info.germany@de.tdk-lambda.com  
www.de.tdk-lambda.com



## Austria Sales Office

Aredstrasse 22  
2544 Leobersdorf  
Austria  
Tel: +43 2256 655 84  
Fax: +43 2256 645 12  
info.germany@de.tdk-lambda.com  
www.de.tdk-lambda.com



## Scandinavia Sales Office

Valdemarsgade 7  
4100 Ringsted  
Denmark  
Tel: +45 24 63 95 65  
Fax: +45 69 80 44 99  
info@de.tdk-lambda.com  
www.emea.tdk-lambda.com



## Switzerland Sales Office

Bahnhofstrasse 50  
8305 Dietlikon  
Switzerland  
Tel: +41 44 850 53 53  
Fax: +41 44 850 53 50  
info@de.tdk-lambda.com  
www.de.tdk-lambda.com



## TDK-Lambda UK Ltd.

Kingsley Avenue  
Ilfracombe  
Devon EX34 8ES  
United Kingdom  
Tel: +44 (0) 12 71 85 66 66  
Fax: +44 (0) 12 71 86 48 94  
powersolutions@uk.tdk-lambda.com  
www.uk.tdk-lambda.com



## TDK-Lambda Ltd.

Kibbutz  
Givat Hashlosha 48800  
Israel  
Tel: +9 723 902 4333  
Fax: +9 723 902 4777  
info@tdk-lambda.co.il  
www.tdk-lambda.co.il



## Russia

### Technical Support:

St Petersburg  
Tel: +7 (812) 6580463

### Sales:

Moscow  
info@tdk-lambda.ru  
www.tdk-lambda.ru

## Local Distribution

