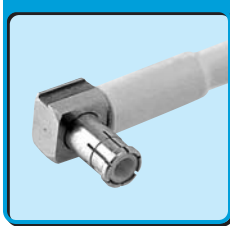


MCX

For Flexible Cable

**01K2026,2211**

MCX / P

Model No.	Housing		Cable Type
	Material	Finish	
01K2026-00	BS	Au	RG-174,188,316
01K2211-00	BS	Au	RG-178,196

RoHS

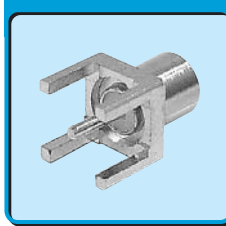
**01K1912**

MCX / J

Model No.	Housing		Cable Type
	Material	Finish	
01K1912-00	BS	Au	RG-174,188,196,316
01K1912-10	BS	Au	RG-178,196

RoHS

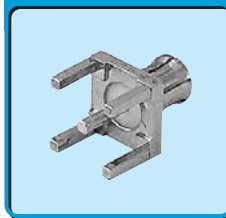
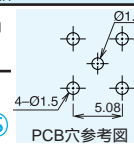
Receptacle

**01K2153**

MCX / J

Model No.	Housing	
	Material	Finish
01K2153-00	BS	Au

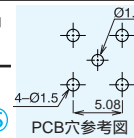
RoHS

**01K2419**

MCX / P

Model No.	Housing	
	Material	Finish
01K2419-00	BS	Au

RoHS



MMCX

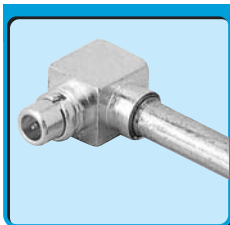
DC ~ 6GHz

項目:Requirement		規格:Specification
電 氣 的 性 能	特性インピーダンス:Impedance	50
	V.S.W.R.	DC ~ 6GHz Max 1.15
	挿入損失:Insertion Loss	DC ~ 6GHz Max 0.06 f dB f:frequency range(GHz)
	絶縁抵抗:Insulation Resistance	DC 500V min 1000M
	耐電圧:Dielectric Withstanding Voltage	1000V rms at Sea Level
機 械 的 性 能	接触抵抗>Contact Resistance	AC 50mA Max 5m
	結合部着脱力:Force to Engage and Disengage	Max 1.6kg
	コンタクト寿命>Contact Disconnect Life	500 Matings Contact Resistance Max 5m

この仕様は、MMCX コネクタの中で代表的なものについて述べたものです。仕様詳細については、別途お問い合わせください。
This specification covers the typical items among the MMCX connectors. Inquire separately for detailed specifications.

MMCX

For Semi-Rigid Cable

**01K2028**

MMCX / P

Model No.	Housing		Cable Type
	Material	Finish	
01K2028-00	BS	Au	SX-22
01K2028-10	BS	Ni	SX-22

RoHS

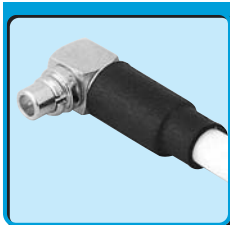
**01K2092**

MMCX / P

Model No.	Housing		Cable Type
	Material	Finish	
01K2092-00	BS	Au	SX-22

RoHS

For Flexible Cable

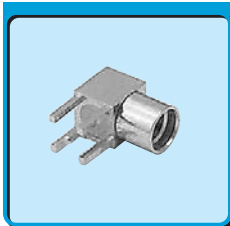
**01K2030**

MMCX / P

Model No.	Housing		Cable Type
	Material	Finish	
01K2030-00	BS	Au	RG-178,196

RoHS

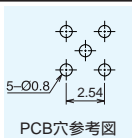
Receptacle

**01K2356**

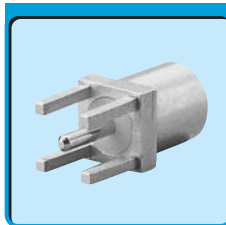
MMCX / J

Model No.	Housing	
	Material	Finish
01K2356-00	BS	Au

RoHS



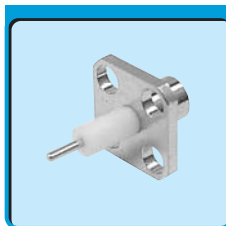
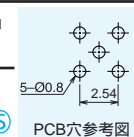
Receptacle

**01K1680**

MMCX / J

Model No.	Housing	
	Material	Finish
01K1680-00	BS	Au

RoHS

**01K2202**

MMCX / J

Model No.	Housing		Dimension	
	Material	Finish	L1	L2
01K2202-00	BS	Ni	8.15	4.5
01K2202-10	BS	Ni	5.35	3.0

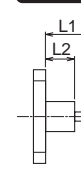
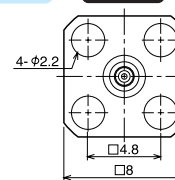
FLANGE TYPE A

RoHS

MMCX FLANGE TYPE

TYPE A

Dimension



1 ケーブルAssyでの供給となります。Furnished in a cable assembly.