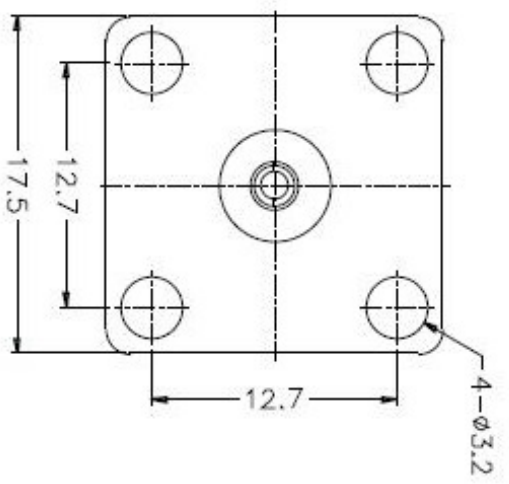
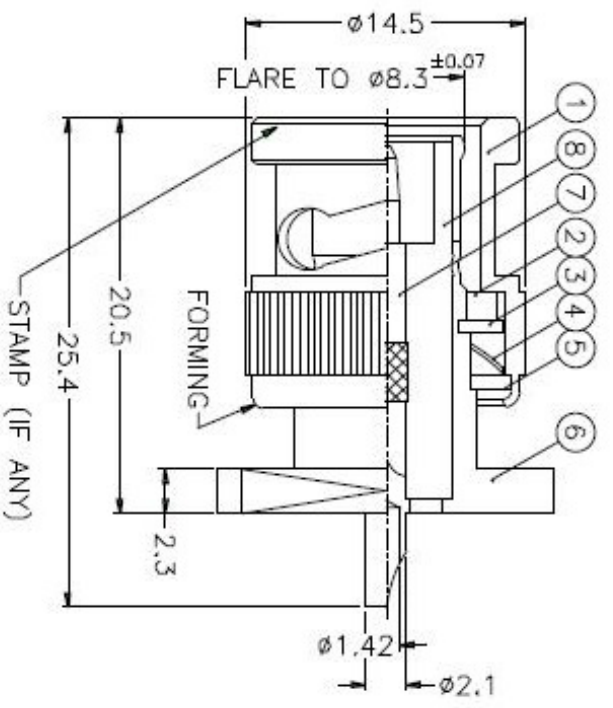


ISS	ZONE	DESCRIPTION \ PER REQUEST \ DATE
-----	------	----------------------------------

REVISIONS

1 2 3 4 5 6 7 8



NOTES: FINISH (PLATING THICKNESS IN MICRO-INCHES)

1. BRASS PER QQ-B-625
2. BRASS PER QQ-B-613
3. NICKEL PL. 100 MIN. THICK OVER COPPER STRIKE
4. NICKEL PL. 200 MIN. THICK OVER COPPER STRIKE
5. GOLD PL. 3 MIN. THICK OVER NICKEL PL. 100 MIN. THICK OVER COPPER STRIKE
6. PTFE MIL-P-19468

NO.	DESCRIPTION	MATERIAL	FINISH	QTY	DRAWING NO.	SCALE	ISSUE	A
8	INSULATOR	NOTE 6	NATURAL	1	B1551A1-BT-50			
7	CONTACT PIN	NOTE 1	NOTE 5	1	B1551A1-7			
6	BODY	NOTE 1	NOTE 3	1	B1551A1-6			
5	WASHER	NOTE 2	NOTE 3	1	WS-129/9X08			
4	SPRING	SKS	NOTE 4	1	BS0000-6			
3	RETAINER RING	NOTE 1	NOTE 3	1	BS0000-5			
2	GASKET	RUBBER	RED	1	GS-115/8X15			
1	SHELL	NOTE 1	NOTE 3	1	BS0000-1-B			

DIMENSIONS ARE IN MILLIMETERS  
UNLESS OTHERWISE SPECIFIED  
TOLERANCES  
0.3-6 = ±0.2  
6-50 = ±0.4  
30-120 = ±0.6  
120-315 = ±1  
315-1000 = ±1.6  
1000-2000 = ±2.4

PART NO.	B1551A1-NT3G-50
APPROVED	DATE
CHECKED	DATE
DRAWN	DATE
FILE NO.	

TITLE	BNC PANEL PLUG
DRAWING NO.	KJ-B1551A1-NT3G-50
ITEM NO.	

**Amphenol**

1 2 3 4 5 6 7 8

A

B

C

D

E

F

A

B

C

D

E

F