

## Descriptions

75W isolated, DC/DC Converter



RoHS



Report



Report

EN62368-1

BS EN62368-1

## Features

- Ultra-wide input voltage range: 43-160VDC
- High efficiency up to 90%
- Low no-load power consumption
- Reinforced insulation, input - output isolation test voltage: 3k VAC, input - case isolation test voltage: 2.1k VAC
- Operating ambient temperature range: -40°C to +105°C
- Input under-voltage protection, output short-circuit, over-current, over-voltage, over-temperature protection
- Industry standard 1/4 brick

## Applications

- railway systems

## Selection Guide

Certification	Part No. <sup>①</sup>	Input Voltage (VDC)		Output		Full Load Efficiency (%) Min./Typ.	Max. Capacitive Load(μF)
		Nominal (Range)	Max. <sup>②</sup>	Voltage (VDC)	Current (mA) Max./Min.		
EN/BS EN	DRWQB75-F1D03	110 (43-160)	170	3.3	17045/0	84/86	30000
EN/BS EN	DRWQB75-F1D05			5	15000/0	86/88	15000
EN/BS EN	DRWQB75-F1D12			12	6250/0	87/89	4500
EN/BS EN	DRWQB75-F1D15			15	5000/0	87/89	3600
EN/BS EN	DRWQB75-F1D24			24	3125/0	88/90	2250
EN/BS EN	DRWQB75-F1D48			48	1563/0	86/88	360
--	DRWQB75-F1D03H	110 (43-160)	170	3.3	17045/0	84/86	30000
EN/BS EN	DRWQB75-F1D05H			5	15000/0	86/88	15000
EN/BS EN	DRWQB75-F1D12H			12	6250/0	87/89	4500
EN/BS EN	DRWQB75-F1D15H			15	5000/0	87/89	3600
EN/BS EN	DRWQB75-F1D24H			24	3125/0	88/90	2250
EN/BS EN	DRWQB75-F1D48H			48	1563/0	86/88	360
--	DRWQB75-F1D03(H)E5(D6) <sup>③</sup>	110 (43-160)	170	3.3	17045/0	82/84	30000
--	DRWQB75-F1D05(H)E5(D6)			5	15000/0	84/86	15000



# DRWQB75-F1Dxx(H)(E5)(D6) Series

--	DRWQB75-F1D12(H)E5(D6)			12	6250/0	85/87	4500
--	DRWQB75-F1D15(H)E5(D6)			15	5000/0	85/87	3600
--	DRWQB75-F1D24(H)E5(D6)			24	3125/0	86/88	2250
--	DRWQB75-F1D48(H)E5(D6)			48	1563/0	84/86	360

Note:  
 ① Use "H" suffix for heat sink mounting. We recommend to choose modules with a heat sink for enhanced heat dissipation and applications with extreme temperature requirements;  
 ② Exceeding the maximum input voltage may cause permanent damage.  
 ③ Use "E5" suffix for chassis mounting and "D6" suffix for DIN-Rail mounting. The minimum input voltage range and the start-up voltage of the E5/D6 product model are 1VDC higher than the horizontal package;  
 ④ Efficiencies for E5 /D6 Model's is decreased by 2% due to the input reverse polarity protection function.

## Specifications

Product Specifications	Item	Operating Conditions		Min.	Typ.	Max.	Unit	
Input Specifications	Input Current (full load / no-load)	Nominal input voltage	3.3VDC output	--	595/10	609/20	mA	
			24VDC output	--	758/10	775/20		
			12VDC, 15VDC output	--	767/10	784/20		
			05VDC, 48VDC output	--	775/10	793/20		
	Reflected Ripple Current	Nominal input voltage		--	100	--		
	Surge Voltage (1sec. max.)			-0.7	--	180	VDC	
	Start-up Voltage			--	--	43		
	Under-voltage Protection			--	40	--		
	Input Filter			Pi filter				
	Hot Plug			Unavailable				
Ctrl <sup>①</sup>	Module on		Ctrl pin open or pulled high (3.5-12VDC)					
	Module off		Ctrl pin -Vin or pulled low (0-1.2VDC)					
	Input current when off		--	2	10	mA		
Output Specifications	Voltage Accuracy	Nominal input voltage, 0%-100% load		--	±1	±3	%	
	Linear Regulation	Input voltage variation from low to high at full load	3.3VDC, 5VDC output	--	--	±0.5		
			Others	--	±0.1	±0.3		
	Load Regulation	Nominal input voltage, 10%-100% load	3.3VDC, 5VDC output	--	±0.5	±1.0		
			Others	--	±0.3	±0.5		
	Transient Recovery Time	25% load step change			--	200	500	μs
	Transient Response Deviation		3.3VDC, 5VDC output	--	±6	±9	%	
			Others	--	±3	±5		
	Temperature Coefficient	Full load		--	--	±0.03	%/°C	
	Ripple & Noise <sup>②</sup>	20MHz bandwidth, 10%Io-100%Io load	48VDC output	--	200	300	mVp-p	
Others			--	100	200			
Trim			90	--	110	%		
Output Voltage			--	--	105			



# DRWQB75-F1Dxx(H)(E5)(D6) Series

	Remote Compensation(sense)						
	Over-temperature Protection	SRWQB75-Face max. temperature	--	105	115	°C	
	Over-voltage Protection	Input voltage range	3.3VDC, 5VDC output	110	--	160	%Vo
			Others	110	--	140	
	Over-current Protection	Input voltage range		110	140	190	%Io
Short-circuit Protection			Hiccup, continuous, self-recovery				
General Specifications	Isolation	Input-output	Electric Strength test for 1 minute with a leakage current of 5mA max.	3000	--	--	VAC
		Input-case		2100	--	--	
		Output-case		1500	--	--	VDC
	Insulation Resistance	Input-output resistance at 500VDC	1000	--	--	MΩ	
	Isolation Capacitance	Input-output capacitance at 100KHz/0.1V	--	2200	--	pF	
	Switching Frequency	PFM mode	--	170	--	KHz	
	MTBF	MIL-HDBK-217F@25°C	500	--	--	K hours	
Environmental Specifications	Operating Temperature Range	See temperature derating curves	-40	--	+105	°C	
	Storage Humidity	Non-condensing	5	--	95	%RH	
	Storage Temperature		-55	--	+125	°C	
	Pin Soldering Resistance Temperature	Soldering spot is 1.5mm away from case for 10 seconds	--	--	+300		
	Cooling Test		EN60068-2-1				
	Dry Heat		EN60068-2-2				
	Damp Heat		EN60068-2-30				
	Shock and Vibration Test		IEC/EN61373 - Category 1, Grade B				
Mechanical Specifications	Case Material	Aluminum alloy case; Black plastic bottom, flame-retardant and heat-resistant (UL94 V-0)					
	Dimensions	DRWQB75-F1Dxx	60.80 × 39.20 × 12.70mm				
		DRWQB75-F1DxxH	61.50 × 39.20 × 27.70mm				
		DRWQB75-F1DxxE5	135.00 × 70.00 × 22.60mm				
		DRWQB75-F1DxxD6	137.00 × 70.00 × 28.10mm				
		DRWQB75-F1DxxHE5	135.00 × 70.00 × 36.20mm				
		DRWQB75-F1DxxHD6	137.00 × 70.00 × 41.70mm				
	Weight	DRWQB75-F1Dxx	88.0g(Typ.)				
		DRWQB75-F1DxxH	119.0g(Typ.)				
		DRWQB75-F1DxxE5	164.0g(Typ.)				
DRWQB75-F1DxxD6		237.0g(Typ.)					
DRWQB75-F1DxxHE5		200.0g(Typ.)					

		DRWQB75-F1DxxHD6	268.0g(Typ.)
	Cooling Method	Free air convection or forced convection	
<p>Note:</p> <p>①The Ctrl pin voltage is referenced to input -Vin.</p> <p>②Ripple &amp; Noise for 48VDC output at 0%Io-100%Io load ≤ 400mV, others outputs at 0%Io-100%Io load ≤ 300mV, the measuring method of ripple and noise, please refer to Fig. 1 .</p>			

## Electromagnetic Compatibility (EMC)

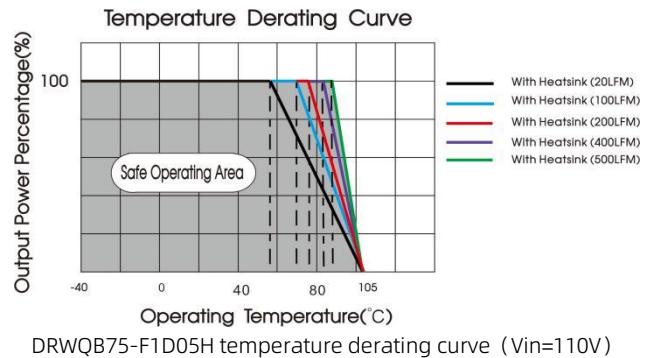
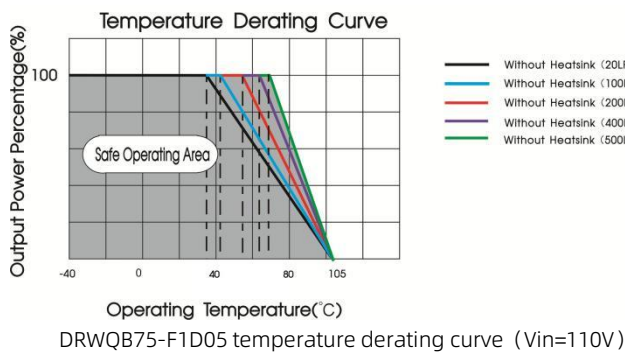
Emissions	CE	CISPR32/EN55032	150KHz-30MHz	Class B (see Fig. 3 for recommended circuit)	
	RE*	CISPR32/EN55032	30MHz-1GHz	Class B (see Fig. 3 for recommended circuit)	
Immunity	ESD	IEC/EN61000-4-2	GB/T17626.2	Contact ±6kV, Air ±8kV	perf.Criteria A
	RS	IEC/EN61000-4-3	GB/T17626.3	20V/m	perf.Criteria A
	CS	IEC/EN61000-4-6	GB/T17626.6	10Vr.m.s	perf.Criteria A
	EFT	IEC/EN61000-4-4	GB/T17626.4	±2KV (5KHz, 100KHz) (see Fig. 3 for recommended circuit)	perf.Criteria A
	Surge	IEC/EN61000-4-5	GB/T17626.5	line to line ±2KV (1.2μs/50μs 2Ω) (see Fig. 3 for recommended circuit)	perf.Criteria A

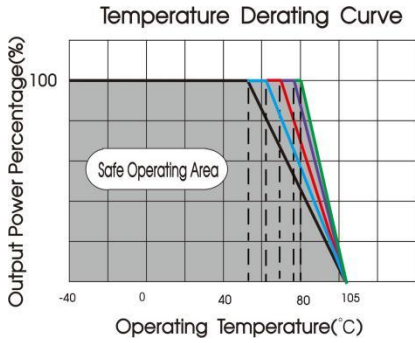
Note: \*The standard only suit for DRWQB75-F1D series (without heatsink).

## Electromagnetic Compatibility (EMC) (EN50155)

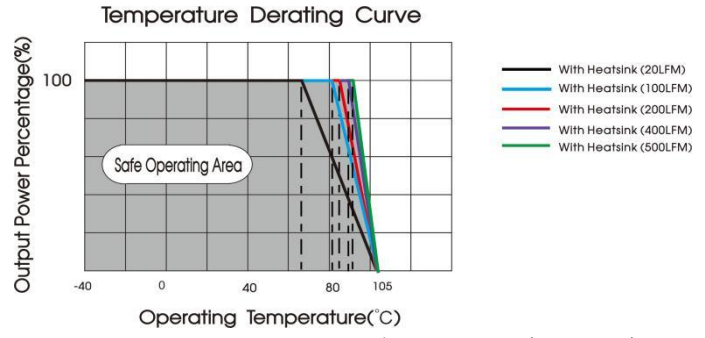
Emissions	CE	EN50121-3-2	150kHz-500kHz	99dBuV	(see Fig. 2 for recommended circuit)
		EN55016-2-1	500kHz-30MHz	93dBuV	(see Fig. 2 for recommended circuit)
Immunity	RE	EN50121-3-2	30MHz-230MHz	40dBuV/m at 10m	(see Fig. 2 for recommended circuit)
		EN55016-2-1	230MHz-1GHz	47dBuV/m at 10m	(see Fig. 2 for recommended circuit)
	ESD	EN50121-3-2	Contact ±6KV/Air ±8KV		perf. Criteria A
	RS	EN50121-3-2	20V/m		perf. Criteria A
	EFT	EN50121-3-2	±2kV 5/50ns 5kHz	(see Fig. 2 for recommended circuit)	perf. Criteria A
	Surge	EN50121-3-2	line to line ±1KV (42Ω, 0.5μF)	(see Fig. 2 for recommended circuit)	perf. Criteria A
	CS	EN50121-3-2	0.15MHz-80MHz	10V r.m.s	perf. Criteria A

## Characteristic Curve





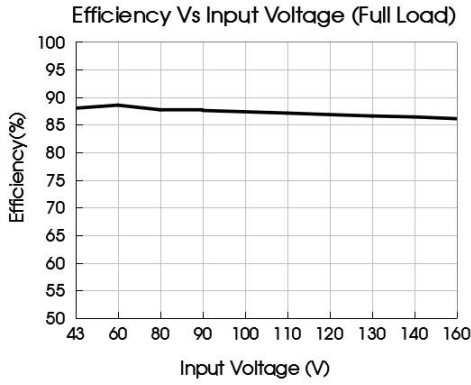
DRWQB75-F1D12 temperature derating curve (Vin=110V)



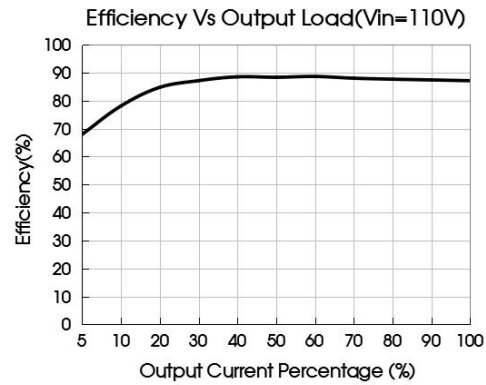
DRWQB75-F1D12H temperature derating curve (Vin=110V)

Notes:

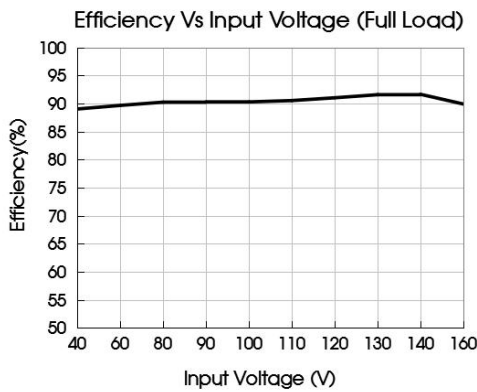
1. Temperature derating curves and efficiency curves are typical test values.
2. Temperature derating curve in accordance with our laboratory test conditions for testing, the actual use of environmental conditions if the customer is not consistent, to ensure that the product aluminum shell temperature does not exceed 100 °C, can be used within any rated load range.



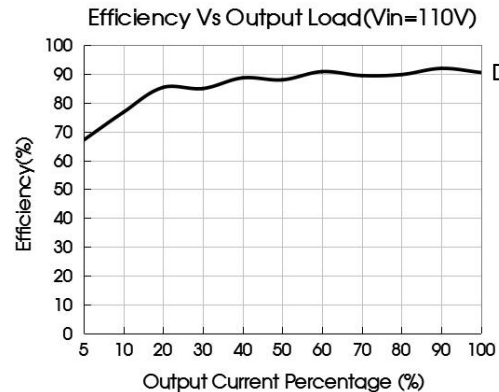
DRWQB75-F1D05



DRWQB75-F1D05



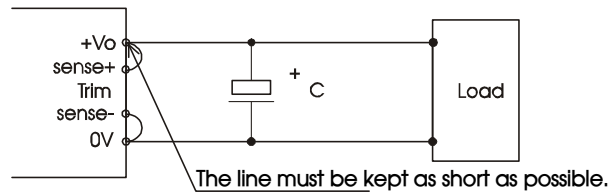
DRWQB75-F1D24



DRWQB75-F1D24

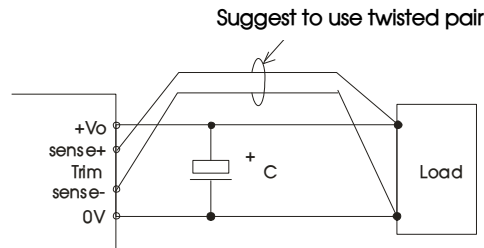
## Remote Sense Application

1. Remote Sense Connection if not used



Notes:

1. If the sense function is not used for remote regulation the user must connect the +Sense to +Vo and -Sense to 0V at the DC-DC converter pins and will compensate for voltage drop across pins only.
  2. The connections between Sense lines and their respective power lines must be kept as short as possible, otherwise they may be picking up noise, interference and/or causing unstable operation of the power module.
2. Remote Sense Connection used for Compensation



Notes:

1. Using remote sense with long wires may cause unstable output, please contact technical support if long wires must be used.
2. PCB-tracks or cables/wires for Remote Sense must be kept as short as possible. Twisted pair or shielded wairs are suggested for remote compensation and must be kept as short as possible.
3. We recommend using adequate cross section for PCB-track layout and/or cables to connect the power supply module to the load in order to keep the voltage drop below 0.3V and to make sure the power supply's output voltage remains within the specified range.
4. Note that large wire impedance may cause oscillation of the output voltage and/or increased ripple. Consult technical support or factory for further advice of sense operation.

## Design Reference

### 1. Ripple & Noise

All the DC-DC converters of this series are tested before delivery using the recommended circuit shown in Fig. 1.

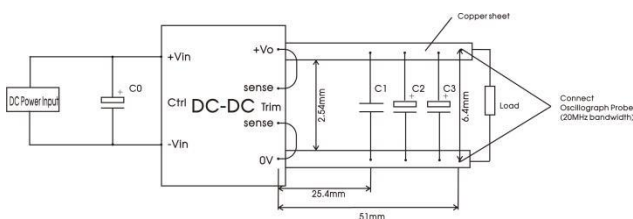


Fig.1

Capacitors value	C0(μF)	C1(μF)	C2(μF)	C3(μF)
Output voltage				
3.3VDC	100	1	10	1000
5VDC				680
12VDC				220
15VDC				
24VDC				
48VDC				

### 2. Typical application

We recommended using our EMC circuit, otherwise please ensure that at least a 100μF electrolytic capacitors is connected at the input in order to ensure adequate voltage surge suppression and protection.

Input and/or output ripple can be further reduced by appropriately increasing the input & output capacitor values Cin and Cout and/or by selecting capacitors with a low ESR (equivalent series resistance). Also make sure that the capacitance is not exceeding the specified max. capacitive load value of the product.



Capacitors value	Cout( $\mu$ F)	Cin( $\mu$ F)
Output voltage		
3.3VDC	1000	100
5VDC	680	
12VDC	220	
15VDC		
24VDC		
48VDC		

### 3. EMC compliance recommended circuit

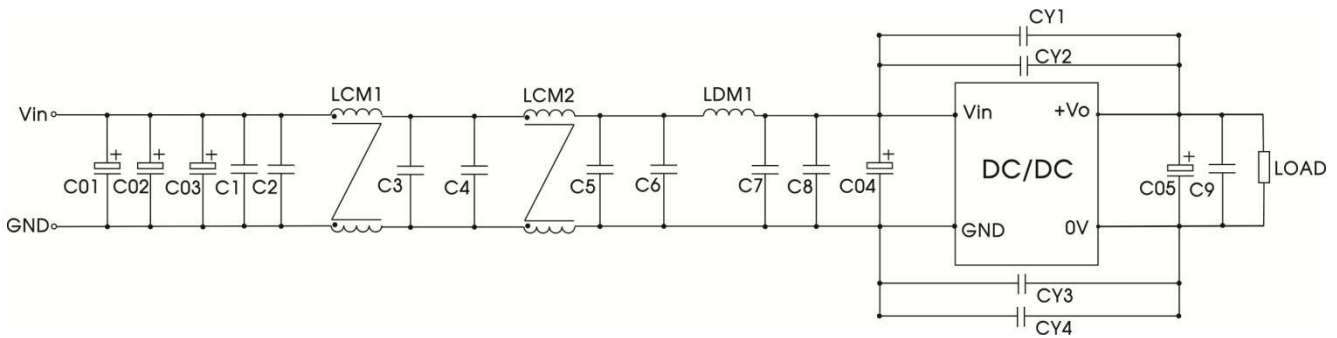


Fig.2

C01, C02, C03, C04	220 $\mu$ F/200V (electrolytic capacitor)
C05	220 $\mu$ F/63V (electrolytic capacitor)
LDM1	1.5 $\mu$ H (Shielded inductor)
C1, C2, C3, C4, C5, C6, C7, C8, C9	2.2 $\mu$ F/250V
CY1, CY2, CY3, CY4	2200 pF /400VAC (Y safety capacitor)
LCM1	4.7mH
LCM2	1mH

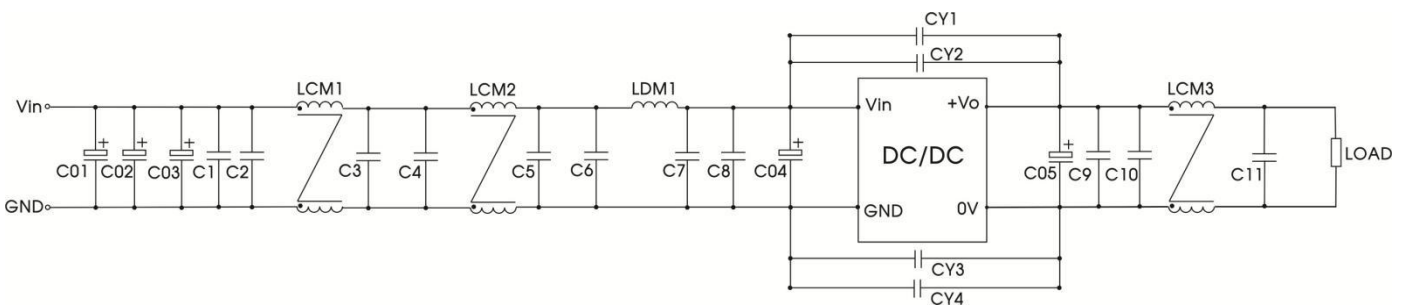
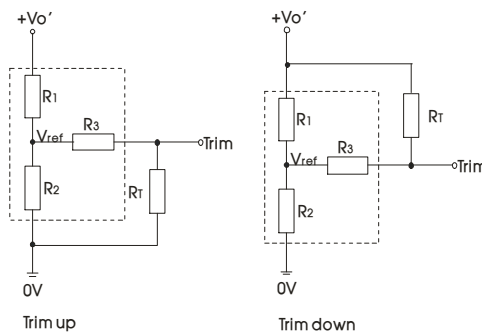


Fig.3

C01, C02, C03, C04	220uF/200V (electrolytic capacitor)
C05	220uF/63V (electrolytic capacitor)
LDM1	1.5uH (Shielded inductor)
C1, C2, C3, C4, C5, C6, C7, C8, C9, C10, C11	2.2uF/250V
CY1, CY2, CY3, CY4	2200 pF /400VAC (Y safety capacitor)
LCM1	4.7mH
LCM2	1mH
LCM3	36μH

#### 4. Trim Function for Output Voltage Adjustment (open if unused)



TRIM resistor connection (dashed line shows internal resistor network)

Trim resistor calculation:

$$\begin{aligned} \text{up: } R_T &= \frac{\alpha R_2}{R_2 - \alpha} - R_3 & \alpha &= \frac{V_{ref}}{V_{o'} - V_{ref}} \cdot R_1 \\ \text{down: } R_T &= \frac{\alpha R_1}{R_1 - \alpha} - R_3 & \alpha &= \frac{V_{o'} - V_{ref}}{V_{ref}} \cdot R_2 \end{aligned}$$

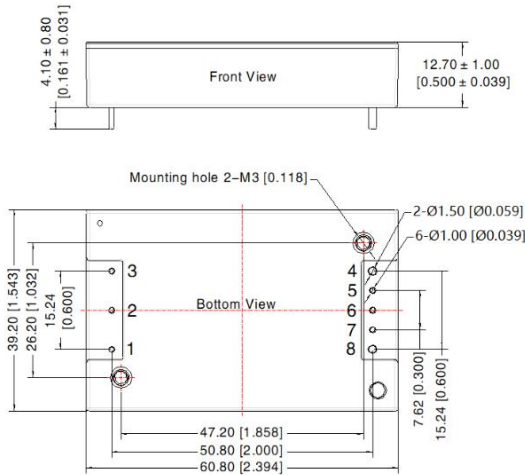
table 1

Vo resistance	3.3(VDC)	5(VDC)	12(VDC)	15(VDC)	24(VDC)	48(VDC)
R1(KΩ)	4.74	8.74	11	14.49	24.87	58.7
R2(KΩ)	2.87	2.87	2.87	2.87	2.87	3.21
R3(KΩ)	9.66	11	11	16	21	11
Vref(V)	1.25	1.25	2.5	2.5	2.5	2.5

Note: For R1, R2, R3 and Vref values refer to table 1. RT = Trim Resistor value; α = self-defined parameter Vo' = desired output voltage

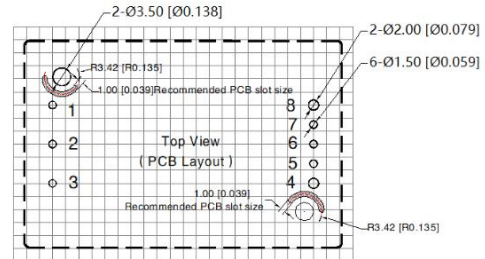
#### 5. The products do not support parallel connection of their output

## Standard (without heatsink) Dimension



Note:  
 Unit: mm[inch]  
 Pin1, 2, 3, 5, 6, 7's diameter: 1.00[0.039]  
 Pin4, 8's diameter: 1.50[0.059]  
 Pin diameter tolerances:  $\pm 0.10[\pm 0.004]$   
 General tolerances:  $\pm 0.50[\pm 0.020]$   
 Mounting hole screwing torque: Max 0.4 N · m

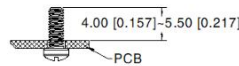
THIRD ANGLE PROJECTION



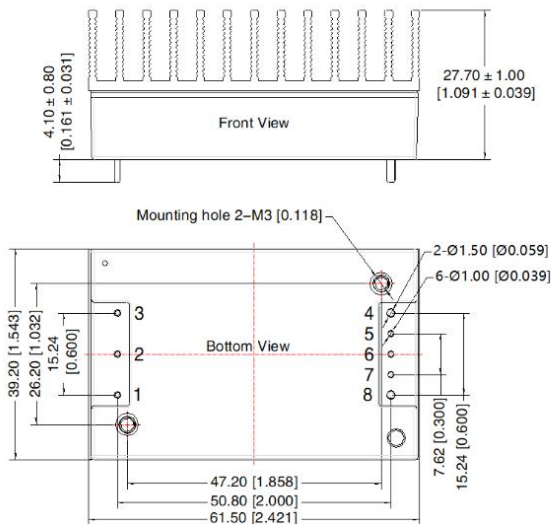
Note: Grid 2.54\*2.54mm

Pin	Mark	Pin	Mark
1	+Vin	5	Sense-
2	Ctrl	6	Trim
3	-Vin	7	Sense+
4	0V	8	+Vo

Recommended screw length

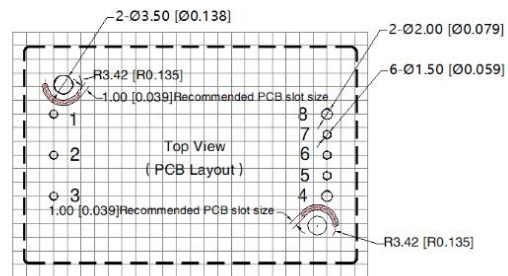


## Standard (with heatsink) Dimension



Note:  
 Unit: mm[inch]  
 Pin1, 2, 3, 5, 6, 7's diameter: 1.00[0.039]  
 Pin4, 8's diameter: 1.50[0.059]  
 Pin diameter tolerances:  $\pm 0.10[\pm 0.004]$   
 General tolerances:  $\pm 0.50[\pm 0.020]$   
 Mounting hole screwing torque: Max 0.4 N · m

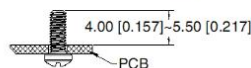
THIRD ANGLE PROJECTION



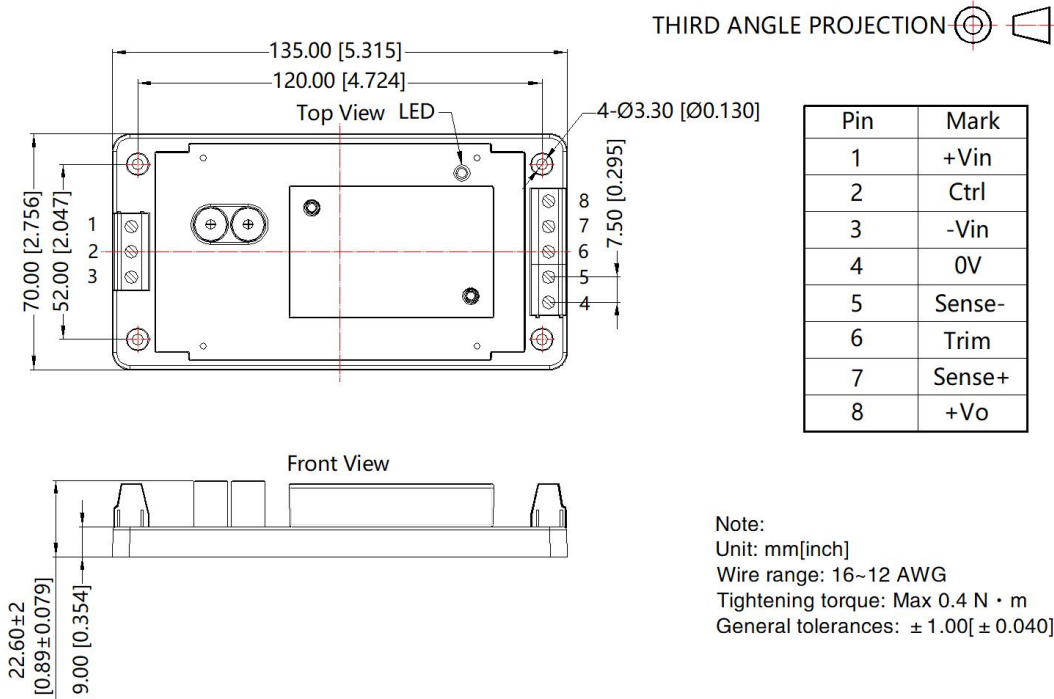
Note: Grid 2.54\*2.54mm

Pin	Mark	Pin	Mark
1	+Vin	5	Sense-
2	Ctrl	6	Trim
3	-Vin	7	Sense+
4	0V	8	+Vo

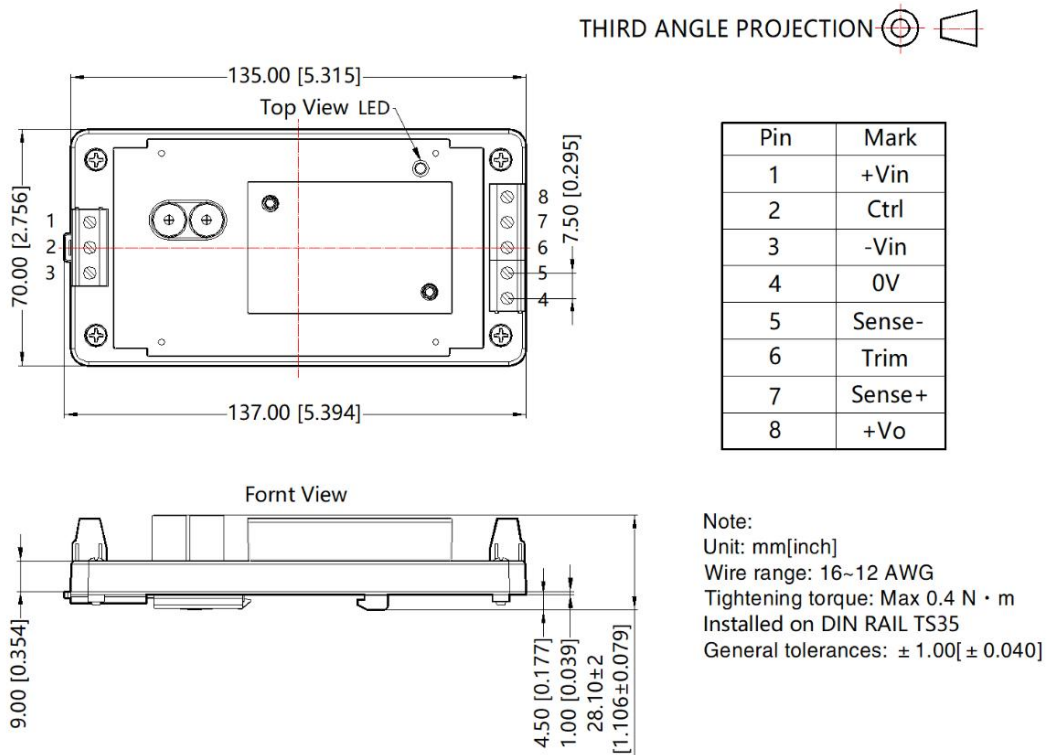
Recommended screw length



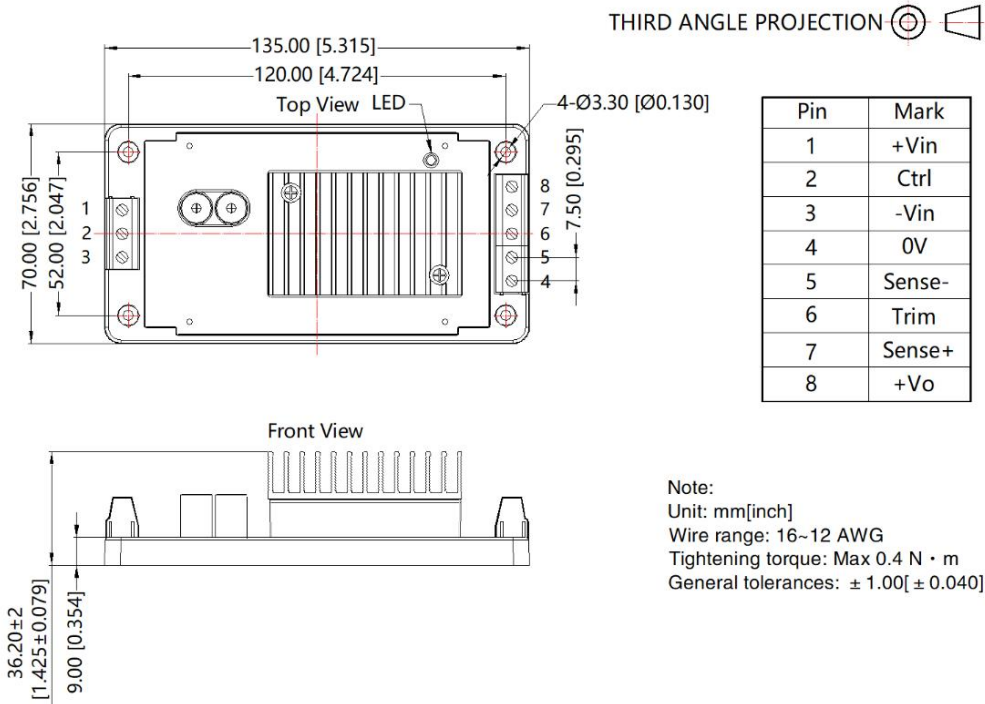
## E5 (without heatsink) Dimension



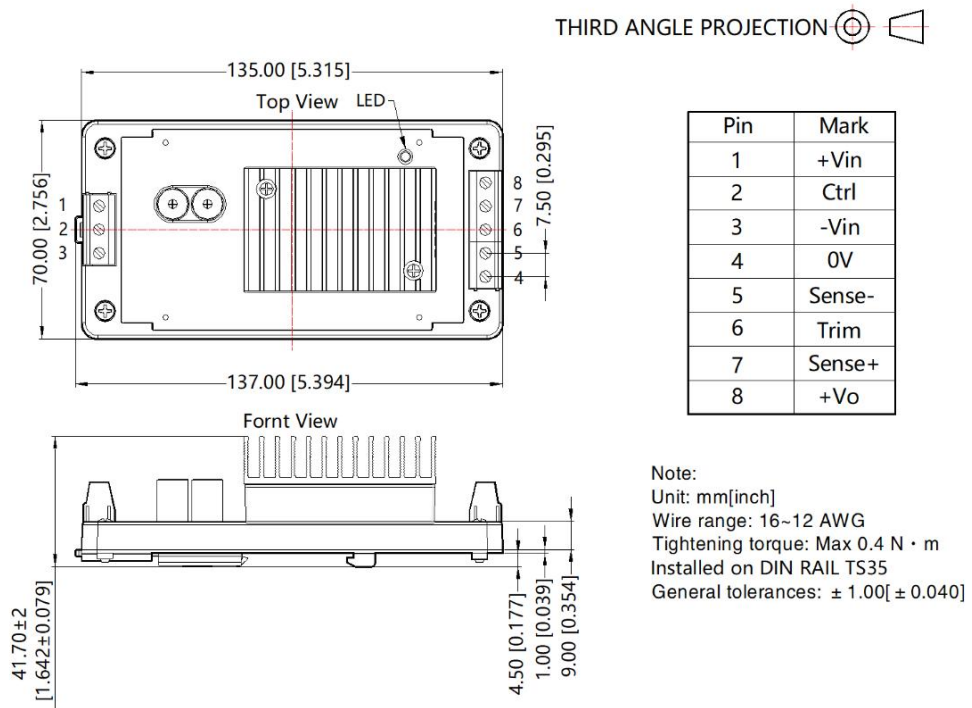
## D6 (without heatsink) Dimension



## E5 (with heatsink) Dimension



## D6 (with heatsink) Dimension



Note:

1. Recommend to use module with more than 5% load, if not, the ripple of the product may exceeds the specification, but does not affect the reliability of the product;
2. The maximum capacitive load offered were tested at input voltage range and full load;
3. It is suggested to take our recommended circuit for EMC testing. If the customer needs to meet the performance of the surge and without taking recommended solution of ours, please make sure the residual voltage of surge less than 180V;
4. It is suggested that customers use enamel film or thermal grease between the heat sink and the module when using the heat sink to ensure good heat dissipation;
5. Unless otherwise specified, data in this datasheet should be tested under the conditions of  $T_a=25^{\circ}\text{C}$ , humidity<75%RH with nominal input voltage and rated load;
6. All index testing methods in this datasheet are based on company corporate standards;
7. Products are related to laws and regulations: see "Features" and "EMC";
8. Our products shall be classified according to ISO14001 and related environmental laws and regulations, and shall be handled by qualified units.