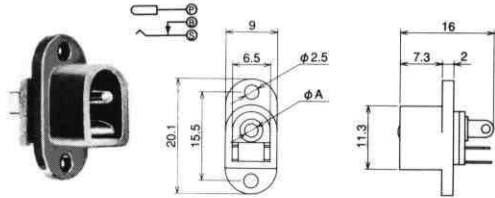
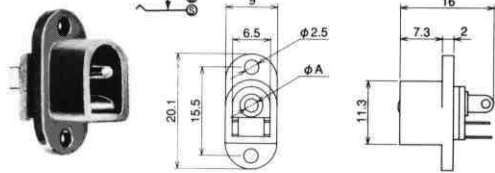


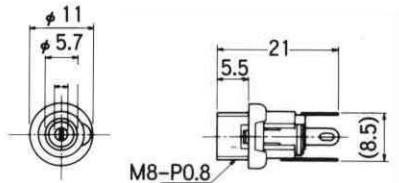
No.MJ-179
PANEL MOUNT DC JACK
(Center Pin : 2.0 mm)
Net Weight : 2 gr.



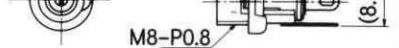
No.MJ-180
PANEL MOUNT DC JACK
(Center Pin : 2.35 mm)
Net Weight : 2 gr.



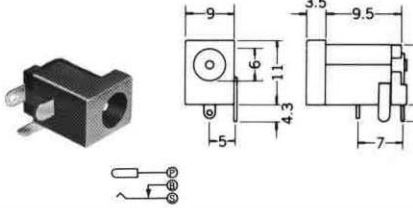
No.MJ-21
CHASSIS Mtg.DC JACK
(Center Pin : 2φ mm)



No.MJ-22
CHASSIS Mtg.DC JACK
(Center Pin : 2.35φ mm)



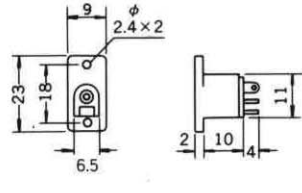
No.MJ-179P
DC JACK FOR P.C.
(Center Pin : 2.0 mm)
Net Weight : 1.6 gr.



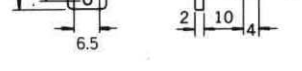
No.MJ-180P
DC JACK FOR P.C.
(Center Pin : 2.35 mm)



No.MJ-181M
(Center Pin : 2 mm)



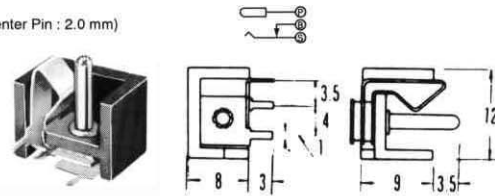
No.MJ-182M
(Center Pin : 2.35mm)
Net Weight : 2 gr.



No.MJ-065M
DC JACK SCREW TYPE
(Center Pin : 2.95mm)



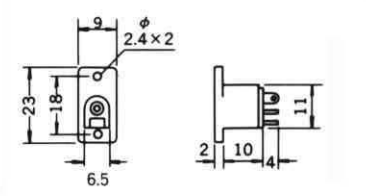
No.MJ-196P
DC JACK INSERT TYPE (Center Pin : 2.0 mm)
FOR P.C.
Net Weight : 1.5 gr.



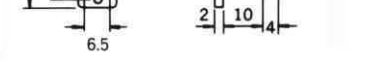
No.MJ-197P
DC JACK INSERT TYPE
(Center Pin : 2.35 mm)
FOR P.C.
Net Weight : 1.5 gr.



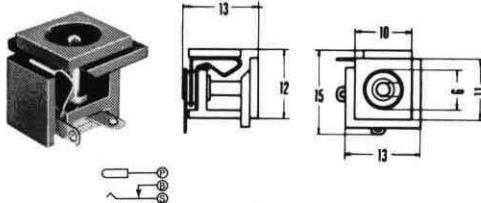
No.MJ-181MS
DC JACK SCREW TYPE
(Center Pin : 2mm)
Net Weight : 3 gr.



No.MJ-182MS
DC JACK SCREW TYPE
(Center Pin : 2.35mm)
Net Weight : 3 gr.



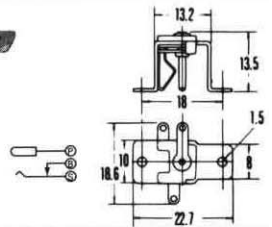
No.MJ-196
DC JACK INSERT TYPE
(Center Pin : 2.0 mm)
Net Weight : 2 gr.



No.MJ-197
DC JACK INSERT TYPE
(Center Pin : 2.35 mm)
Net Weight : 2 gr.



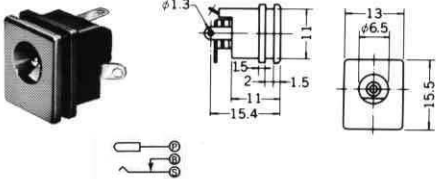
No.MJ-181
PANEL MOUNT DC JACK
(Center Pin : 2.0 mm)
Net Weight : 4 gr.



No.MJ-182
PANEL MOUNT DC JACK
(Center Pin : 2.35 mm)
Net Weight : 4 gr.



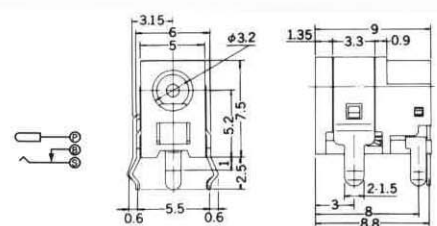
No.MJ-196E
DC JACK INSERT TYPE
(Center Pin : 2.0 mm)



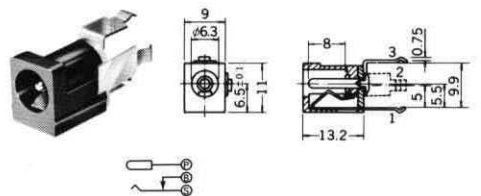
No.MJ-197E
DC JACK INSERT TYPE
(Center Pin : 2.35 mm)



No.MX-407BLB
(Center Pin : 1φ mm)
Net Weight : 1.3 gr.



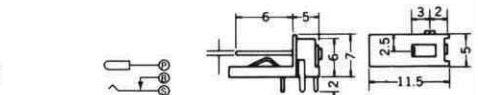
No.MJ-179LE
DC JACK
(Center Pin : 2.0 mm)



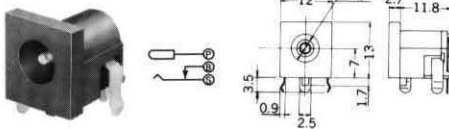
No.MJ-180LE
DC JACK
(Center Pin : 2.35 mm)



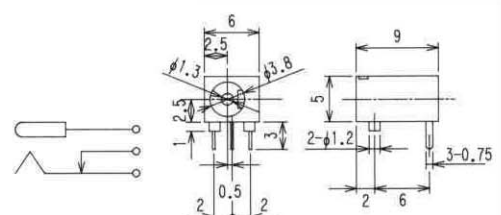
No.MJ-184WK
MINIATURE DC JACK
(Center Pin : 1mm)
Net Weight : 0.5 gr.



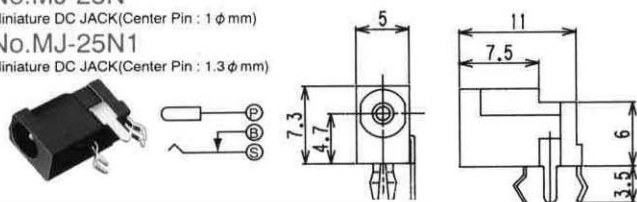
No.MJD-P6
(Center Pin : 2.0mm)
Net Weight : 2 gr.



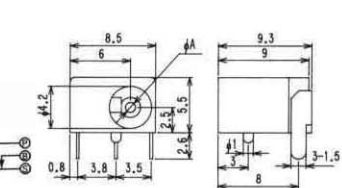
No.MJ-83
(Center Pin : 1.3mm)



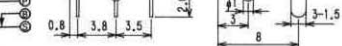
No.MJ-25N
Miniature DC JACK(Center Pin : 1φ mm)
No.MJ-25N1
Miniature DC JACK(Center Pin : 1.3φ mm)



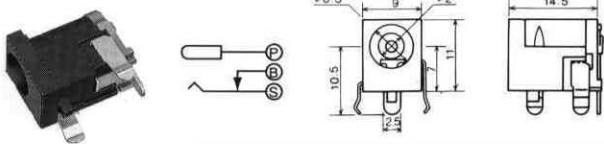
No.MJ-82-1
(Center Pin : 1.3mm)
Net Weight : 1.5 gr.



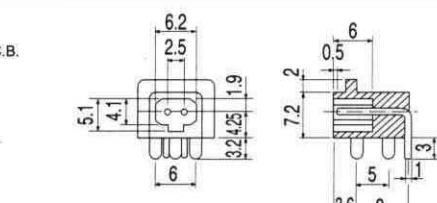
No.MJ-82-2
(Center Pin : 1 mm)
Net Weight : 1.5 gr.



No.MX-408BL
(Center Pin : 2.0mm)



No.MJX-1
DC JACK 2 PIN TYPE FOR P.C.B.



PANEL MOUNT DC JACKS

No.MJ-40

PANEL MOUNT DC JACK (Center Pin : 2 φ mm)

No.MJ-41

PANEL MOUNT DC JACK (Center Pin : 2.35 φ mm)

No.MJ-42

PANEL MOUNT DC JACK (Center Pin : 1.65 φ mm I.D. : 4.4 φ mm)

JSAJ 2 (DC 3.15V~6.3V)

No.MJ-43

PANEL MOUNT DC JACK (Center Pin : 1.65 φ mm I.D. : 5.15 φ mm)

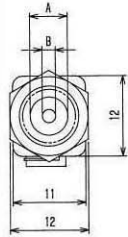
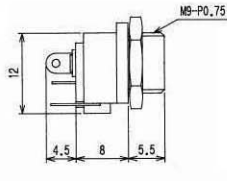
JSAJ 3 (DC 6.3V~10.5V)

No.MJ-44

PANEL MOUNT DC JACK (Center Pin : 1.3 φ mm I.D. : 3.4 φ mm)

No.MJ-45

PANEL MOUNT DC JACK (Center Pin : 1.3 φ mm I.D. : 3.8 φ mm)



DC INLINE JACK

No.MJ-077N

(5.5 φ × 2.1 φ mm)

No.MJ-078N

(5.5 φ × 2.5 φ mm)

No.MJ-095N

(center pin : 0.65 φ mm)

JSAJ 1 (DC 3.15VMax)

No.MJ-096N

(center pin : 1.65 φ mm

I.D. : 4.4 φ mm)

JSAJ 2 (DC 3.15V~6.3V)

No.MJ-097N

(center pin : 1.65 φ mm

I.D. : 5.15 φ mm)

JSAJ 3 (DC 6.3V~10.5V)

No.MJ-099N

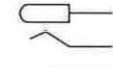
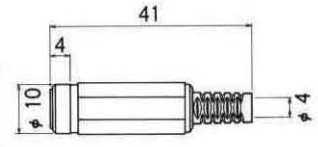
(center pin : 1.3 φ mm

I.D. : 3.4 φ mm)

No.MJ-099N/3.8

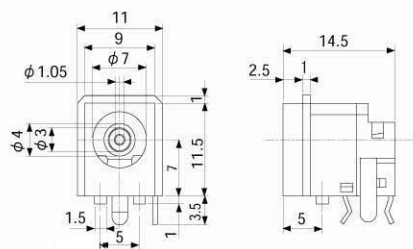
(center pin : 1.3 φ mm

I.D. : 3.8 φ mm)



DC PLUG & JACK FOR EIAJ STANDARD No.RC-5322

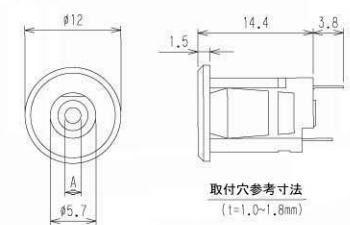
No.MJ-300J



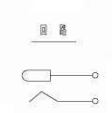
SNAP-IN DC JACKS

No.MJ60 (Center pin: 2 φ mm)

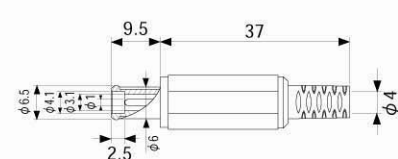
No.MJ61 (Center pin: 2.35 φ mm)



取付穴参考寸法
(1=1.0~1.8mm)



No.MP206



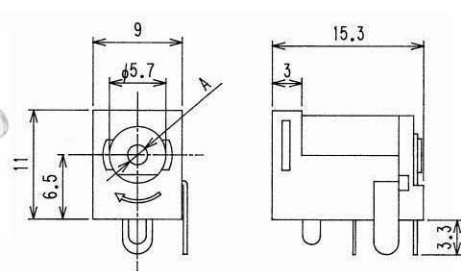
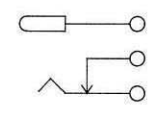
LOCKABLE DC SOCKETS & PLUGS

No.MJ-179LR

LOCKABLE DC SOCKET FOR P.C.B. (Center Pin : 2 φ mm)
TO MATE WITH MP-121CR

No.MJ-180LR

LOCKABLE DC SOCKET FOR P.C.B. (Center Pin : 2.35 φ mm)
TO MATE WITH MP-122CR

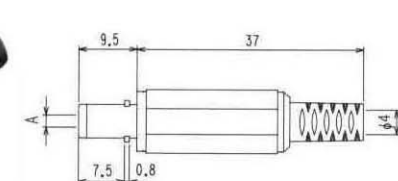


No.MP-121CR

DC PLUG WITH LOKING DETENT (5.5 φ mm × 2.1 φ mm)
TO MATE WITH MJ-179R

No.MJ-122CR

DC PLUG WITH LOKING DETENT (5.5 φ mm × 2.5 φ mm)
TO MATE WITH MJ-180R

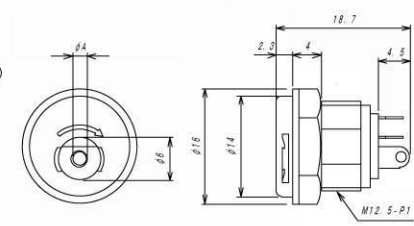


No.MJ10LR

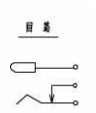
LOCKABLE DC SOCKET FOR PANEL MOUNT (Center pin : 2 φ mm)
TO MATE WITH MP-121CR OR MP121MR

No.MJ11LR

LOCKABLE DC SOCKET FOR PANEL MOUNT (Center pin : 2.35 φ mm)
TO MATE WITH MP-122CR OR MP-122MR



| | A |
|--------|--------|
| MJ10LR | φ 2.0 |
| MJ11LR | φ 2.35 |

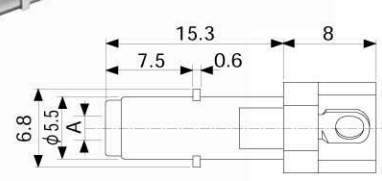


No.MP-121MR (5.5 φ mm × 2.1 φ mm)

DC PLUG WITH LOCKING DETENT FOR MOLDING
TO MATE WITH MJ179LR OR MJ10LR

No.MP-122MR (5.5 φ mm × 2.5 φ mm)

DC PLUG WITH LOCKING DETENT FOR MOLDING
TO MATE WITH MJ180LR OR MJ11LR



DC EXTENTION CABLE

L=1800mm



Available Product Line

| MODEL No. | JACK TYPE (mm) | RATING |
|-----------|-----------------------------------|---------------|
| MC-2376 | $\phi 5.5 \times \phi 2.1$ | 12.0V DC 0.5A |
| MC-2377 | $\phi 5.5 \times \phi 2.5$ | 12.0V DC 0.5A |
| MC-5326 | $\phi 2.35 \times \phi 0.7$ JSAJ1 | 3.15V DC 2A |
| MC-5327 | $\phi 4.0 \times \phi 1.7$ JSAJ2 | 6.3V DC 2A |
| MC-5328 | $\phi 4.75 \times \phi 1.7$ JSAJ3 | 10.5V DC 2A |

DC INLINE JACK FOR MOLDING

No.MJ-23

($5.5 \phi \times 2.1 \phi$ mm)

No.MJ-24

($5.5 \phi \times 2.5 \phi$ mm)

No.MJ-28

(center pin : 1.65ϕ mm I.D. : 4.4ϕ mm)
JSAJ 2 (DC 3.15V~6.3V)

No.MJ-29

(center pin : 1.65ϕ mm I.D. : 5.15ϕ mm)
JSAJ 3 (DC 6.3V~10.5V)

