

12.7 mm (SMA) FLANGE, STRAIGHT MALE AND FEMALE RECEPTACLES (12.7 mm = 1/2 inch)

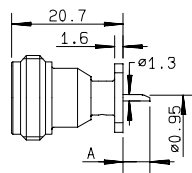


Fig. 1

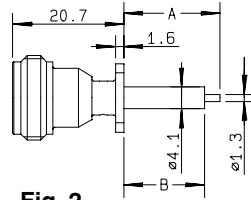


Fig. 2

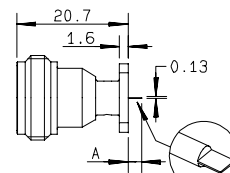


Fig. 3

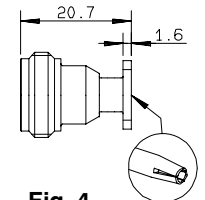


Fig. 4

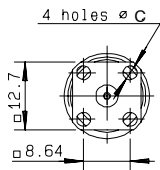


Fig. A

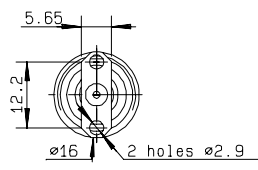


Fig. B

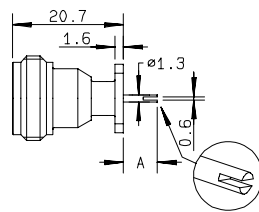


Fig. 5

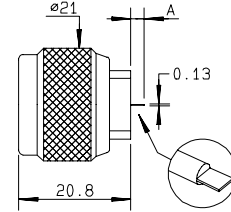


Fig. 6

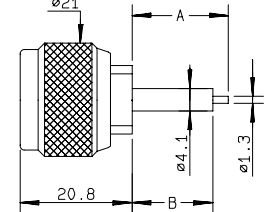


Fig. 7

Flange dimensions idem SMA series . Ask for complete SMA series catalog D1 125 CE.

part number	fig.	dimensions (mm)			captured center contact	panel	note
		A	B	C			
R161 409 500	1 + A	5		2.9	YES	P13	Solder pot
R161 410 520	2 + A	17.9	15	2.9	YES	P13	Extended dielectric
R161 411 500	3 + A	2.5		2.9	YES	P13	Flat tab contact
R161 418 500	4 + A			2.9	YES	P13	Universal / see contacts Page 32
R161 419 500	5 + A	6.3		2.9	YES	P13	Slotted contact
R161 471 500	3 + B	2.5			YES	P20	2 hole flange / flat tab
R161 472 500	5 + B	6.3			YES	P20	2 hole flange / slotted contact
R161 438 200	6 + A	2.5		2.6	YES	P13	Male / flat tab / 4 screws included
R161 438 400	7 + A	17.9	15	2.6	YES	P13	Male / extended dielectric / 4 screws included

17.5 mm FLANGE, STRAIGHT FEMALE RECEPTACLES (17.5 mm = 3/4 inch)

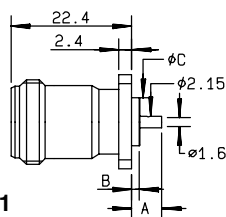


Fig. 1

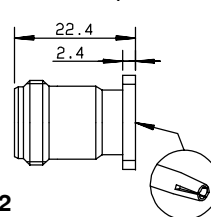


Fig. 2

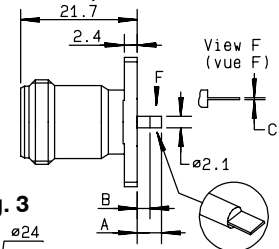


Fig. 3

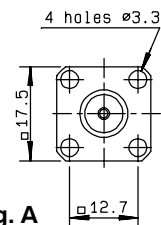


Fig. A

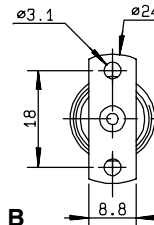
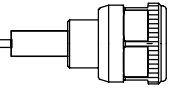


Fig. B

part number	fig.	dimensions (mm)			captured center contact	panel	note
		A	B	C			
R161 410 000	1 + A	5.6	1.5	8.9	YES	P03	
R161 418 000	2 + A				YES	P03	Universal / see contacts page 32
R161 461 000	3 + B	6.2	3.9	0.6	YES	P08	2 hole flange / Flat tab contact
R161 461 200	3 + B	2.5		0.13	YES	P08	2 hole flange / Flat tab contact

Note : standard packaging = 50 pieces. For unit packaging, add "W" after the P/N.



25.4 mm FLANGE, STRAIGHT MALE AND FEMALE RECEPTACLES (25.4 mm = 1 inch)

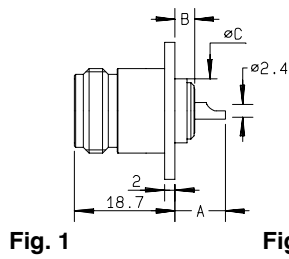


Fig. 2

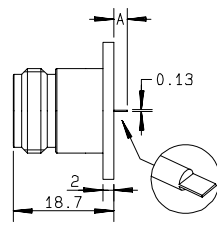


Fig. 3

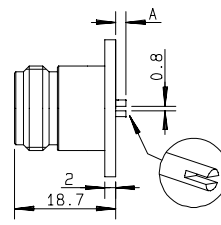


Fig. 4

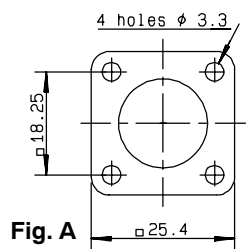
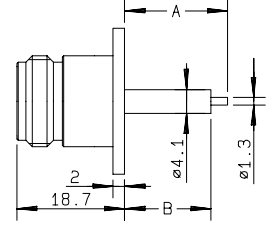


Fig. A

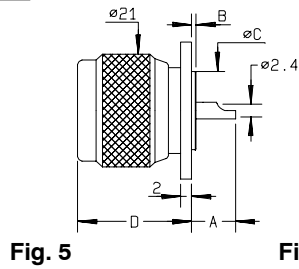


Fig. 5

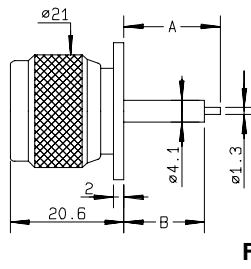


Fig. 6

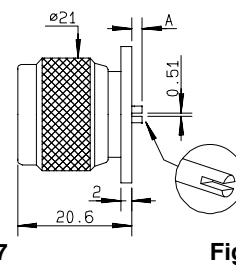


Fig. 7

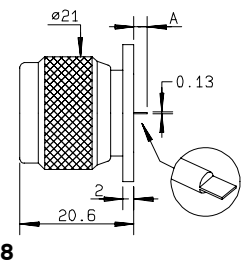
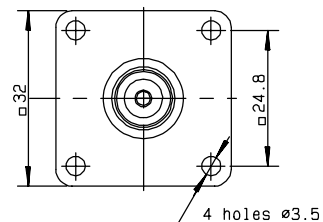
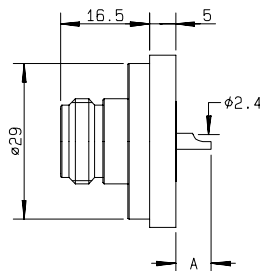
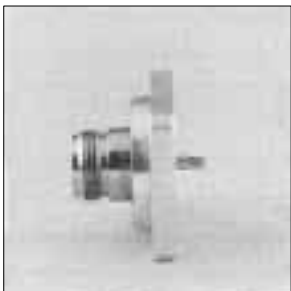


Fig. 8

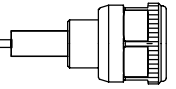
part number	fig.	dimensions (mm)				captured center contact	panel	note
		A	B	C	D			
R161 404 000	1 + A	9.3	0.8	14.6		YES	P07	Solder pot
R161 404 137	1 + A	9.3	0.8	14.6		YES	P07	For intermodulation application/Center contact brass
R161 404 161	1 + A	9.3	0.8	14.6		YES	P07	Solder pot / Center contact : Brass
R161 412 020	1 + A	9.3	3.5	12		YES	P14	Solder pot
R161 416 130	4 + A	17.9	15			YES	P15	Extended dielectric
R161 419 020	2 + A	2.5				YES	P14	Flat tab contact
R161 419 300	3 + A	2				YES	P01	Slotted contact
R161 430 020	1 + A	6.5				YES	P14	Short back length
R161 440 020	5 + A	6	0		20.6	YES	P17	Male / solder pot
R161 440 120	5 + A	9.5	3.5	12	26.5	YES	P17	Male / solder pot
R161 441 000	5 + A	8.7	0.8	14.6	20.6	YES	P02	Male / solder pot
R161 441 400	6 + A	17.9	15			YES	P18	Male / extended dielectric
R161 444 037	7 + A	2				YES	P19	Male / slotted contact
R161 444 200	8 + A	2.5				YES	P17	Male / flat tab contact

32 mm (7/16) FLANGE, STRAIGHT FEMALE RECEPTACLE (32 mm ≈ 1 inch 1/4)

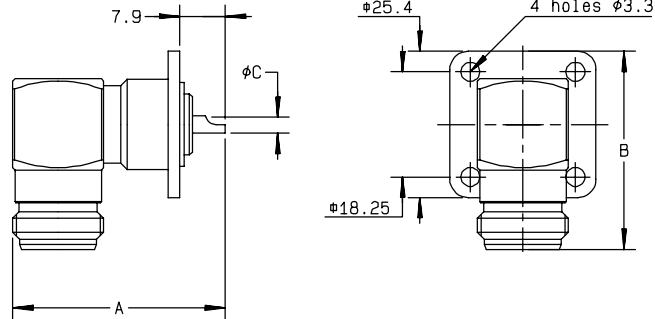


part number	dimensions (mm) A	captured center contact	panel	note
R161 422 120	6.5	YES	P16	Flange dimensions of 7/16 series. Ask our catalog D1 185 CE

Note : standard packaging = 50 pieces. For unit packaging, add "W" after the P/N.

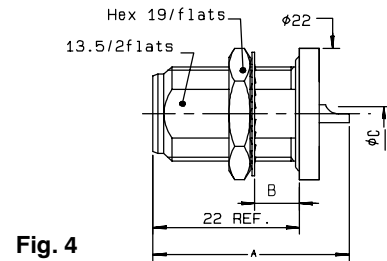
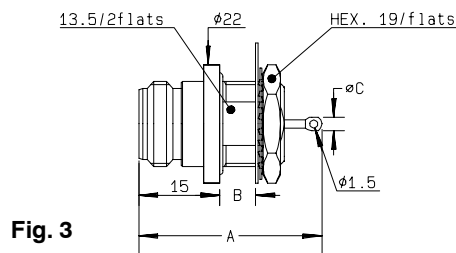
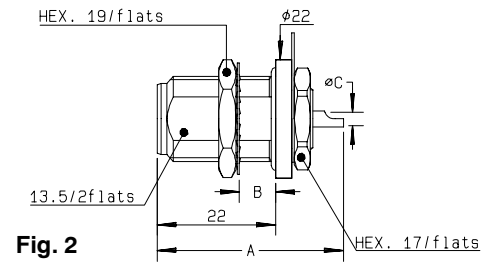
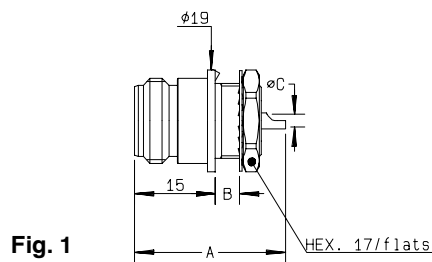


25.4 mm FLANGE, RIGHT-ANGLE FEMALE RECEPTACLE (25.4 mm = 1 inch)



part number	dimensions (mm)			captured center contact	panel	note
	A	B	C			
R161 653 000	36.9	34.4	2.5	YES	P02	Solder pot

BULKHEAD STRAIGHT RECEPTACLES (Panel sealed or HERMETIC)



part number	fig.	dimensions (mm)			captured center contact	panel	note
		A	B	C			
R161 570 000	1	28	4.5	2.4	YES	P09	Front mount
R161 585 200	2	34.6	6.5	2.4	YES	P10	Rear mount / Panel Sealed
R161 586 137	4	30.5	6.5	2.4	YES	P10	For intermodulation application / Rear mount / Panel Sealed
R161 606 000	2	34.6	6.5	2.4	YES	P10	Rear mount / Panel Hermetic
R161 625 000	3	34	6.5	2.5	YES	P10	Front mount / Panel Hermetic

Note : standard packaging = 50 pieces. For unit packaging, add "W" after the P/N.