

# Device Modeling Report

COMPONENTS:MAGNETIC CORE  
PART NUMBER:3C96  
MANUFACTURER:FERROXCUBE



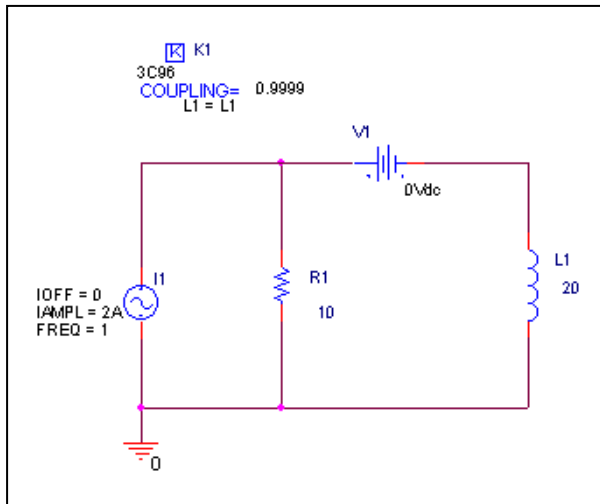
**Bee Technologies Inc.**

## MAGNETIC CORE

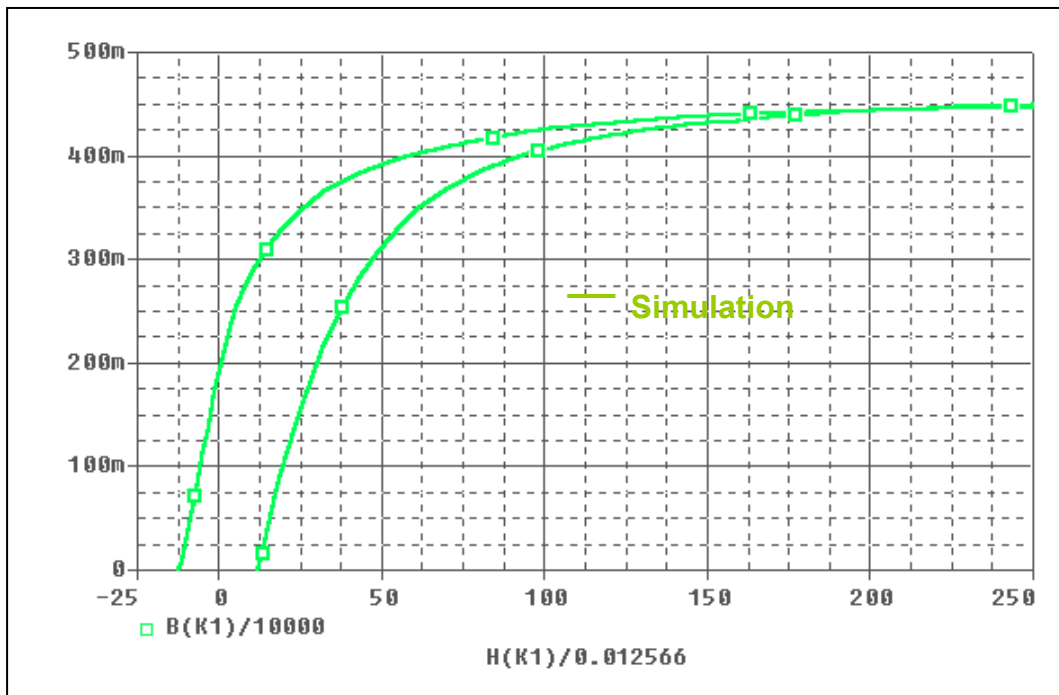
Pspice model parameter	Model description
A	thermal energy parameter
K	domain anisotropy parameter
C	domain flexing parameter
MS	magnetization saturation

# Hysteresis Curve Characteristics

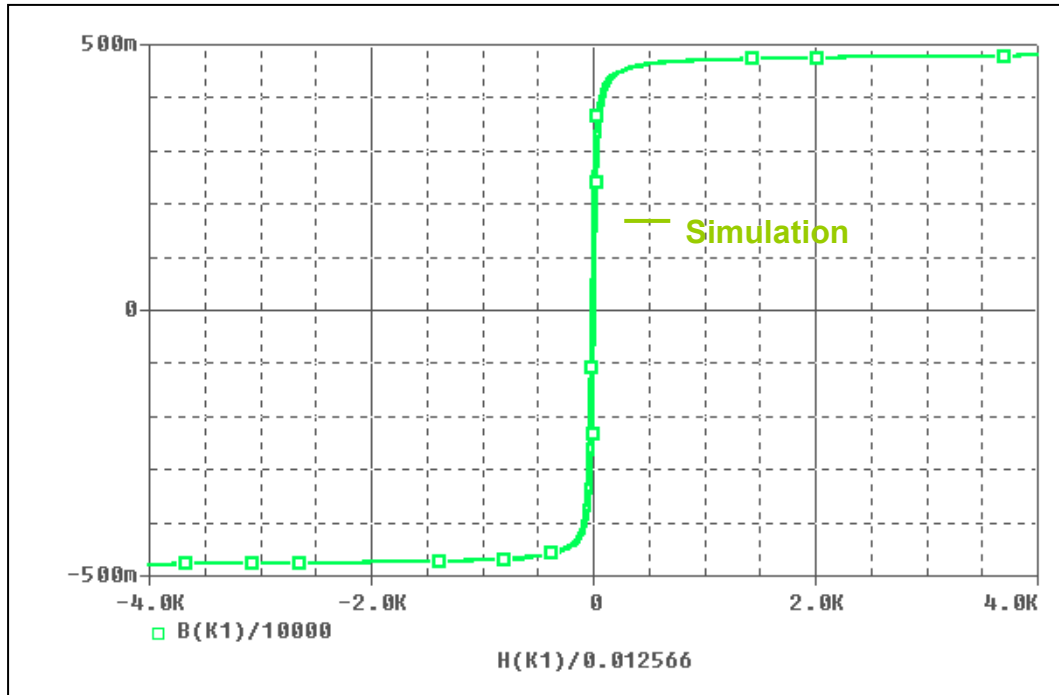
## Evaluation Circuit



## Simulation result



Simulation result



Comparison Table

H(A/m)	B(mT) Measurement	B(mT) Simulation	%Error
50	385	390.296	1.376
75	420	412.536	1.777
100	430	425.026	1.157
125	440	432.401	1.727
150	445	439.612	1.211
175	447	441.771	1.170
200	447	443.893	0.695
225	447	446.063	0.210
250	447	448.185	0.265
25	150	154.624	3.083
75	390	377.104	3.307
100	410	406.056	0.962
125	425	421.87	0.736
150	430	431.522	0.354
175	445	438.117	1.547
200	447	442.92	0.913
225	447	446.823	0.040
250	447	449.688	0.601