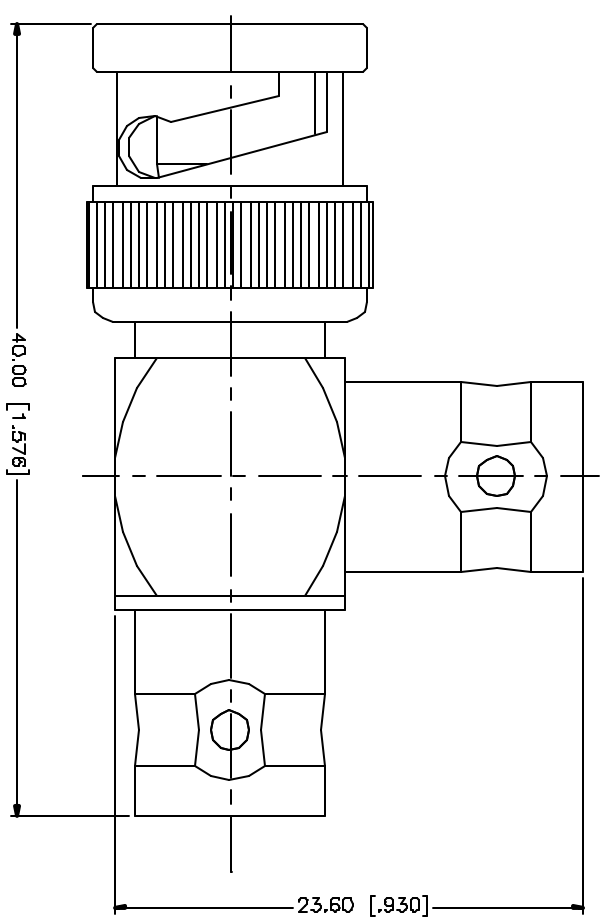


REV.	DATE	DESCRIPTION
A	11/21/03	UPDATE DRAWING FORMAT
B	06/04/05	MODIFY BODY PLATING TO NICKEL



REV.	DESCRIPTION	MATERIAL	FINISH	QTY	APPROVALS	DATE	PART DESCRIPTION
8							<p>Amphenol Connex</p> <p>BNC MALE TO DOUBLE BNC FEMALE</p> <p>112567</p>
7							
6							
5							
4							
3	CONTACT PIN	BRASS	GOLD	1			
2	INSULATOR	DELFIN	NATURAL	1			
1	BODY	BRASS	NICKEL	1			
DESCRIPTION							

UNLESS OTHERWISE SPECIFIED DIMENSIONS ARE IN MILLIMETERS. DIMENSIONS IN [] ARE IN INCHES AND FOR DIMENSIONAL REFERENCE ONLY.
 UNLESS OTHERWISE SPECIFIED TOLERANCES FOR MILLIMETERS ARE:
 0.5 - 8mm ± 0.20mm
 8 - 30mm ± 0.40mm
 30 - 120mm ± 0.50mm
 UNLESS OTHERWISE SPECIFIED TOLERANCES FOR INCHES ARE:
 .020 - .315 = ± 0.0075
 .315 - 1.180 = ± 0.015
 1.180 - 4.724 = ± 0.025
 DO NOT SCALE DRAWING

APPROVALS	DATE
DRAWN G.R.S.	05/04/05
CHECKED	
RELEAS	
SHEET 1 OF 1	

CAD FILE	C:/112/112567.DWG
DWG. NO.	112567DWG
REV.	B
SIZE	A
SCALE	NA